



mareazul

Your
own
BEACHFRONT
living



Location

The new 'Corasol' *of the Mayan Riviera*

Mareazul is positioned facing the beach within **Corasol Golf and Beach Resort**, the fastest growing luxury residential community on the Mayan Riviera.

At the same time, the '**Diamond Zone**' is a district with golf courses, high-end hotels and premium properties, within this area is **Corasol**, just 40 km away from Cancun's international Airport and 5 minutes from the centre of Playa Del Carmen where one can enjoy world class gastronomic and entertainment experiences.



Corasol main access

Playa del Carmen

Diamond Zone, Golf Gran Coyote in Corasol



Diamond Zone Map *in Mayan Riviera*





Golf Gran Coyote

Corasol Master Plan ▶

72 hectares
of first class golf course

82 hectares
to develop hotels
and residential

82 hectares
of territorial reserve

Corasol stands out for being the gated residential community with the highest added value in this destination. Its urbanistic design and special amenities, like Gran Coyote Golf course and what will become the biggest most luxurious Beach Club, makes it the most desirable enclave with first class touristic and residential developments.

Discover Corasol from the air and fall in love with its lush green surroundings, located at the edge of the spectacular turquoise sea.





Master Plan

Mareazul Master Plan

Mareazul's master plan comprises 14 towers, built in 2 semicircular lines which join at one end, leaving an extensive central space with communal areas dedicated to relaxation, meditation and recreation.

All the apartments have panoramic views over the central garden from their terraces.



South Tower



North Tower



Amenities

- | | | |
|----------------------|-------------------------------------|-------------------------|
| 1 Main Access | 6 Zen Zone | 10 Central Garden |
| 2 Concierge & Lobby | 7 Walkways and Mayan sculpture park | 11 Punto Azul Gastrobar |
| 3 Multi Purpose Hall | 8 Hammock Area over water mirror | 12 Swimming Pool |
| 4 Mini Market | 9 Hammock Area over sand mirror | 13 Faro Azul Grill |
| 5 Gym & Spa | | 14 Paddle Court |
| | | 15 Tennis Courts |



Amenities

Amenities for a lifestyle *full of experiences*

The residential complex of Mareazul includes large green spaces and beautiful environments and amenities which offer its residents the opportunity to enjoy a healthy active lifestyle with numerous possibilities for outdoor recreation.



Triple Security



237 meters of beach with exclusive use for Mareazul owners



Swimming Pool with 130 m wide



Central Garden



Faro Azul Grill



Punto Azul Gastrobar



Hammock Area



Walkways and Mayan Sculpture Park



Zen Zone



Gym



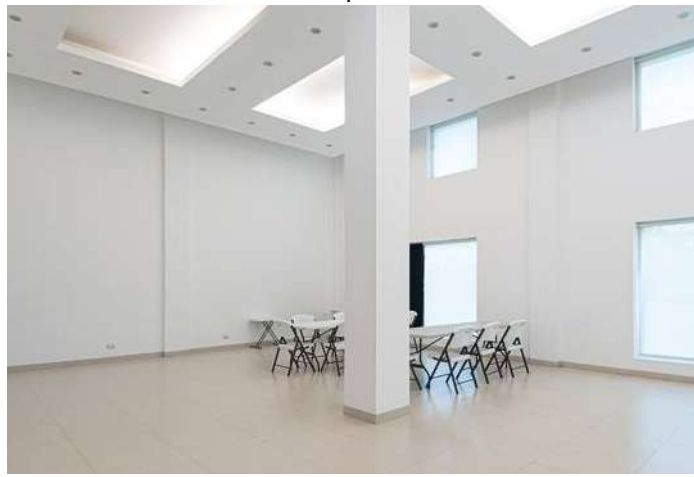
Spa



Tennis & Paddle Courts



Golf Course Gran Coyote



Multi Purpose Hall



Mini Market



Models



Condo with Private Pool

FACING THE OCEAN

173 m²
Total Area

30 m²
Terrace

2
Bedrooms

3
Bathrooms



2 Bedroom
Plan

Located on the ground floor, this model offers the perfect atmosphere for a lifestyle in connection with your surroundings and nature. The spacious terrace with its own private relaxation pool gives you the freedom to walk onto the beach and to create memorable experiences with your family and friends.

Characteristics of the residencies:

- Construction with high end finishings.
- High quality carpentry.
- Anti-cyclone gates.
- Equipped kitchen.
- Bathroom fittings and high-quality taps.
- Air conditioning with central system.
- Lighting, ventilation and additional installations.





Condo with Private Pool

FACING THE GARDEN

From
171 to 179 m²
Total Area

30 m²
Terrace

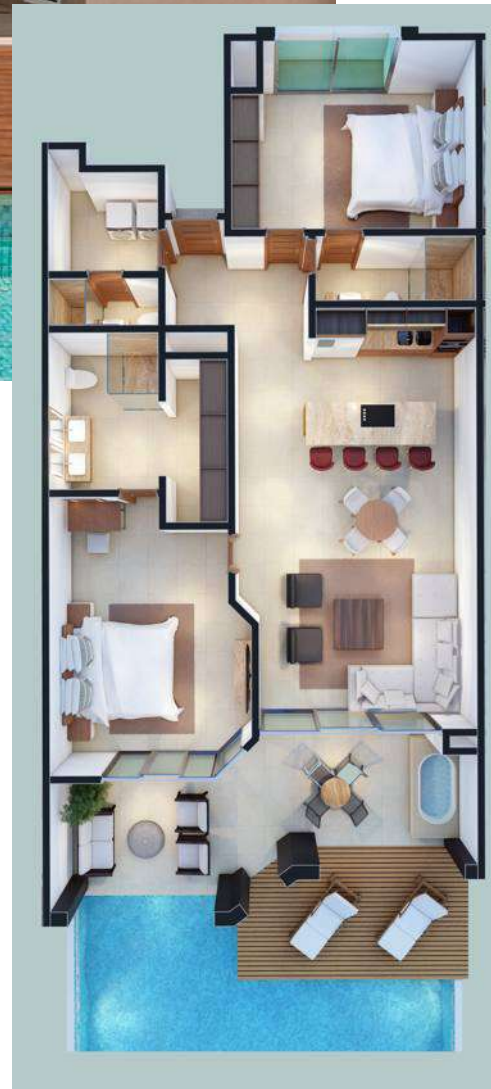
2
Bedrooms

3
Bathrooms

Located on the ground floor, this model offers the perfect atmosphere for a lifestyle in connection with your surroundings and nature. The spacious terrace with its own private relaxation pool gives you the freedom to walk onto the garden and to create memorable experiences with your family and friends.

Characteristics of the residencies:

- Construction with high end finishings.
- High quality carpentry.
- Anti-cyclone gates.
- Equipped kitchen.
- Bathroom fittings and high-quality taps.
- Air conditioning with central system.
- Lighting, ventilation and additional installations.



2 Bedrooms
Plan



Middle Level Condo

— FACING THE OCEAN —

172 m²
Total Area

30 m²
Terrace

2
Bedrooms

3
Bathrooms

2 Bedrooms Plan



Welcome the warm Caribbean breeze from your spacious balcony and enjoy panoramic views over the turquoise sea. The large windows and its location on the middle level make this condo a magnificent home, full of light and natural ventilation.

Characteristics of the residencies

- Construction with high end finishings.
- High quality carpentry.
- Anti-cyclone gates.
- Equipped kitchen.
- Bathroom fittings and high-quality taps.
- Air conditioning with central system.
- Lighting, ventilation and additional installations.





Middle Level Condo

— FACING THE GARDEN —

From
167 to 174 m²
Total Area

30 m²
Terrace

2
Bedrooms

3
Bathrooms

2 Bedrooms Plan



Welcome the warm Caribbean breeze from your spacious terrace and enjoy panoramic views over the gardens of Mareazul. The large windows and its location on the middle level make this condo a magnificent home, full of light and natural ventilation.

Characteristics of the residencies

- Construction with high end finishings.
- High quality carpentry.
- Anti-cyclone gates.
- Equipped kitchen.
- Bathroom fittings and high-quality taps.
- Air conditioning with central system.
- Lighting, ventilation and additional installations.

▼ **3 Bedrooms**
Plan

Middle Level Condo

— FACING THE GARDEN —

4 Bedrooms
Plan ▼

From
215 to 224 m²
Total Área

31 m²
Terrace

3
Bedrooms

4.5
Bathrooms



305 m²
Total Area

50 m²
Terrace

4
Bedrooms

5.5
Bathrooms







Penthouse

FACING THE GARDEN

From
189 to 172 m²
Total Area

30 m²
Terrace

2
Bedrooms

3
Bathrooms

2 Bedrooms
Plan

Admire the stunning panoramic views of the Caribbean Sea from the comfort of your private terrace. Our penthouse has outstandingly large interior spaces with double height ceilings in both the living room and master bedroom. Enjoy an exclusive atmosphere due to its location at the top of the tower.

Characteristics of the residencies:

- Construction with high end finishings.
- High quality carpentry.
- Anti-cyclone gates.
- Equipped kitchen.
- Bathroom fittings and high-quality taps.
- Air conditioning with central system.
- Lighting, ventilation and additional installations.



