



la residencia



la residencia

La Residencia combina elegancia y arquitectura para crear un hotel de lujo con una atmósfera cálida para el disfrute de sus sentidos.

La Residencia es uno de los proyectos más recientes del grupo Reina Roja. Esta vez, en un concepto residencial con un total de 88 unidades en un edificio de 5 niveles.

La Residencia combines elegance and architecture to create a luxury hotel with a warm atmosphere for the enjoyment of your senses.

La Residencia is one of the most recent projects of the Reina Roja group. This time, in a residential concept with a total of 88 units in a 5-level building.





UBICACIÓN - LOCATION

Envidiable ubicación en el corazón de la zona más exclusiva en Playa del Carmen. Ubicado a unos pasos de la 5ta Avenida, a solo minutos de la playa a través de la calle más bella y arbolada, rodeada de los lugares más chic de la ciudad. La Residencia es el mejor lugar para disfrutar del glamour y el estilo de vida en Playa del Carmen.

Enviabile location in the heart of the most exclusive area in Playa del Carmen. Located a few steps from 5th Avenue, just minutes from the beach through the most beautiful and tree-lined street, surrounded by the most chic places in the city, La Residencia is the best place to enjoy glamor and lifestyle in Playa del Carmen.



Av. Diagonal 85 Nte.

Carretera Federal
Cancún

Av. Constituyentes

Av. 30
Av. CTM

Calle 34
Av. 20
Calle 38

Av. 10
5ta Av.

Calle 38, entre 5ta Avenida y Playa Shangri La Playa del Carmen. Quintana Roo, México.



3

2

1

1

Mamita's
Beach Club



2

QUINTA ALEGRÍA
SHOPPING MALL



3

MEGA














A POCOS PASOS DE LA 5TA AVENIDA Y LA PLAYA

Just steps away from 5th Avenue and the beach.





AMENIDADES - AMENITIES

-  Espectacular alberca con vista al mar
-  Roof top con terraza techada con camas de descanso con vista al mar
-  Area para bbq con vista al mar
-  Gimnasio con vista al mar
-  Sky bar
-  Lobby tematizado con galería de arte
-  Operación hotelera
-  Wi-Fi en todas las áreas
-  Estacionamiento subterráneo
-  Seguridad las 24 hrs
-  2 Elevadores

Spectacular pool overlooking the sea



Roof top with covered terrace with beds
with ocean view



BBQ area with ocean view

Gym with ocean view



Sky bar



Themed lobby with art gallery



Hotel operation

Wi-Fi in all areas



Underground parking



24 hour security



2 elevators



ROOFTOP



VIEW FROM THE ROOFTOP
Vista desde el rooftop





ACABADOS DE LUJO

HIGH-QUALITY FINISHES

- . Plafón de madera parota
 - . Pisos de madera machiche
 - . Interiores de pisos y muros de baño en porcelanato
 - . Cancelería alemana de PVC con doble cristal de 6 mm y película protectora anti impacto
 - . Iluminación cálida indirecta LED con lámparas artesanales de madera parota
 - . Muebles de diseño artesanal de madera parota
-
- . Parota wooden ceilings
 - . Machiche wooden floors
 - . Interior floors and bathroom walls in porcelain
 - . PVC gallery window frames with double 6mm glass and anti impact film
 - . Indirect warm light LED lamps with cover of hand made parota wood of the region
 - . Handmade wooden furniture parota







PENTHOUSE LOCK-OFF



TWO BEDROOM LOCK-OFF

Condo con dos recámaras con lock-off

The image shows the interior of a boat cabin with extensive wood paneling on the ceiling and walls. A large window on the right side shows the exterior of the boat, which has a white hull and a wooden deck. The interior features a light-colored sofa with blue and red cushions, a dining table with chairs, and a kitchen area with a sink and counter. A framed picture with a red and white geometric pattern hangs on the left wall. The text "VISITA NUESTRO VISIT OUR SHOWROOM" is overlaid on a green arrow-shaped background in the lower-left corner.

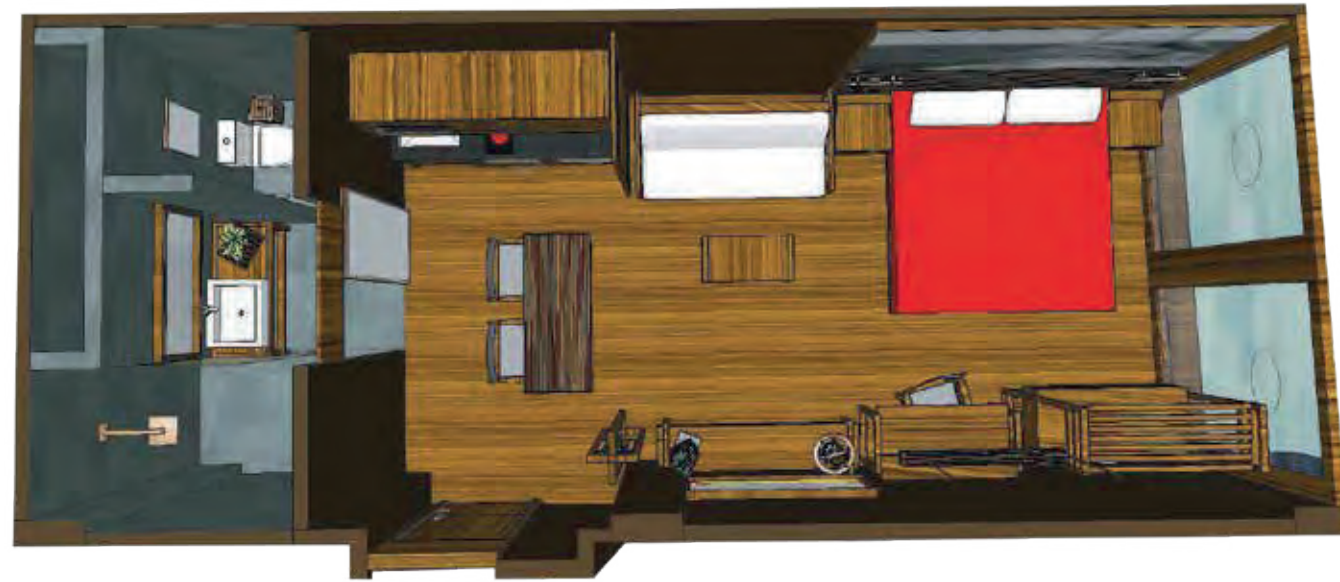
**VISITA NUESTRO
VISIT OUR
SHOWROOM**



KITCHEN / DINING ROOM

Cocina / Comedor





STUDIO

RECÁMARAS / BEDROOMS: 1
SUPERFICIE / AREA: 35.56 m²
BAÑOS / BATHROOMS: 1



1 BEDROOM

RECÁMARAS / BEDROOMS: 1
SUPERFICIE / AREA: 50 m²
BAÑOS / BATHROOMS: 1



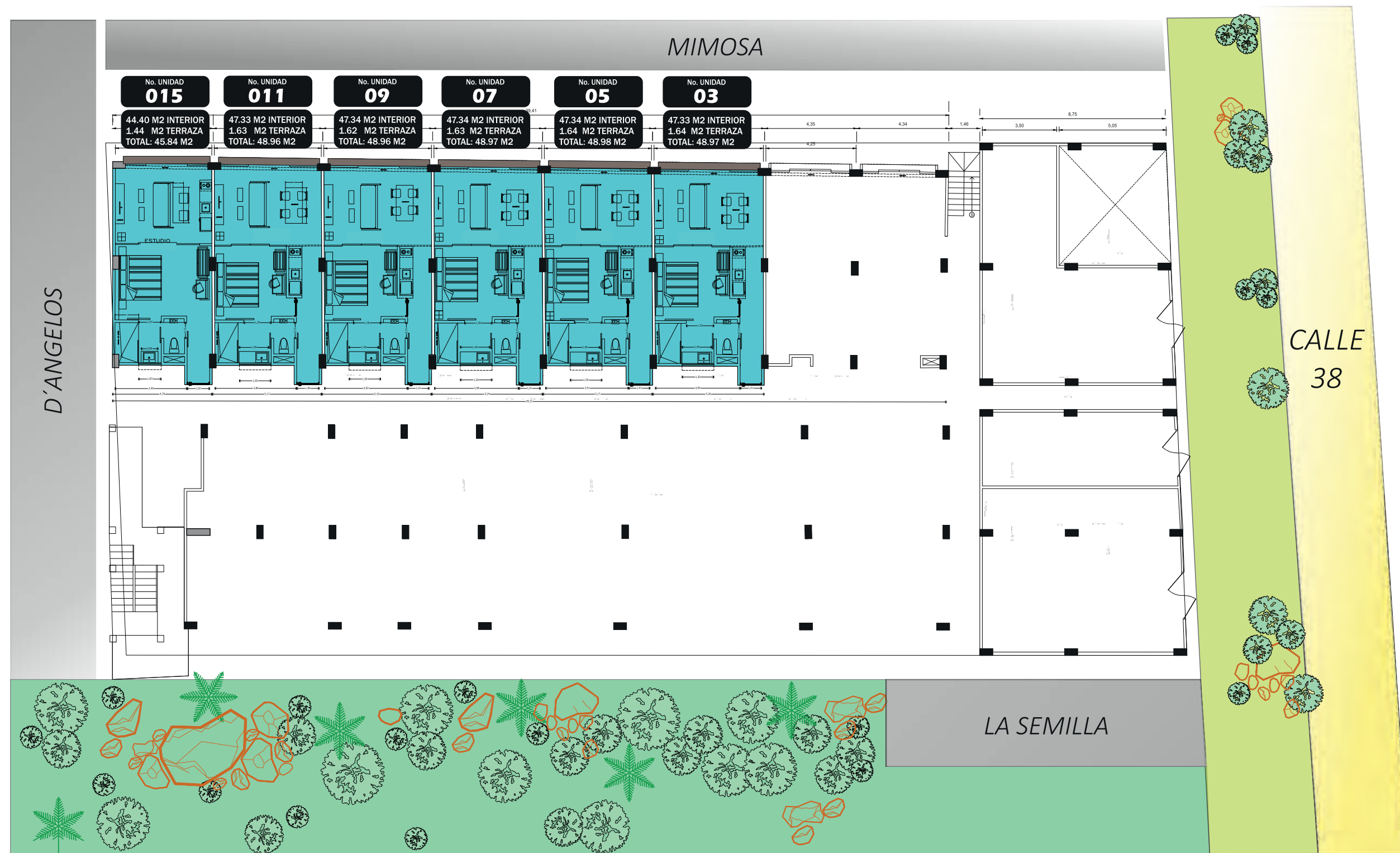
2 BEDROOM Lock-Off

RECÁMARAS / BEDROOMS: 2
SUPERFICIE / AREA: 66.80 m²
BAÑOS / BATHROOMS: 2



PENTHOUSE Lock-Off

RECÁMARAS / BEDROOMS: 2
SUPERFICIE / AREA: 100.52 m²
BAÑOS / BATHROOMS: 2



PLANTA BAJA / GROUND FLOOR



PRIMER NIVEL / FIRST LEVEL



SEGUNDO NIVEL / SECOND LEVEL



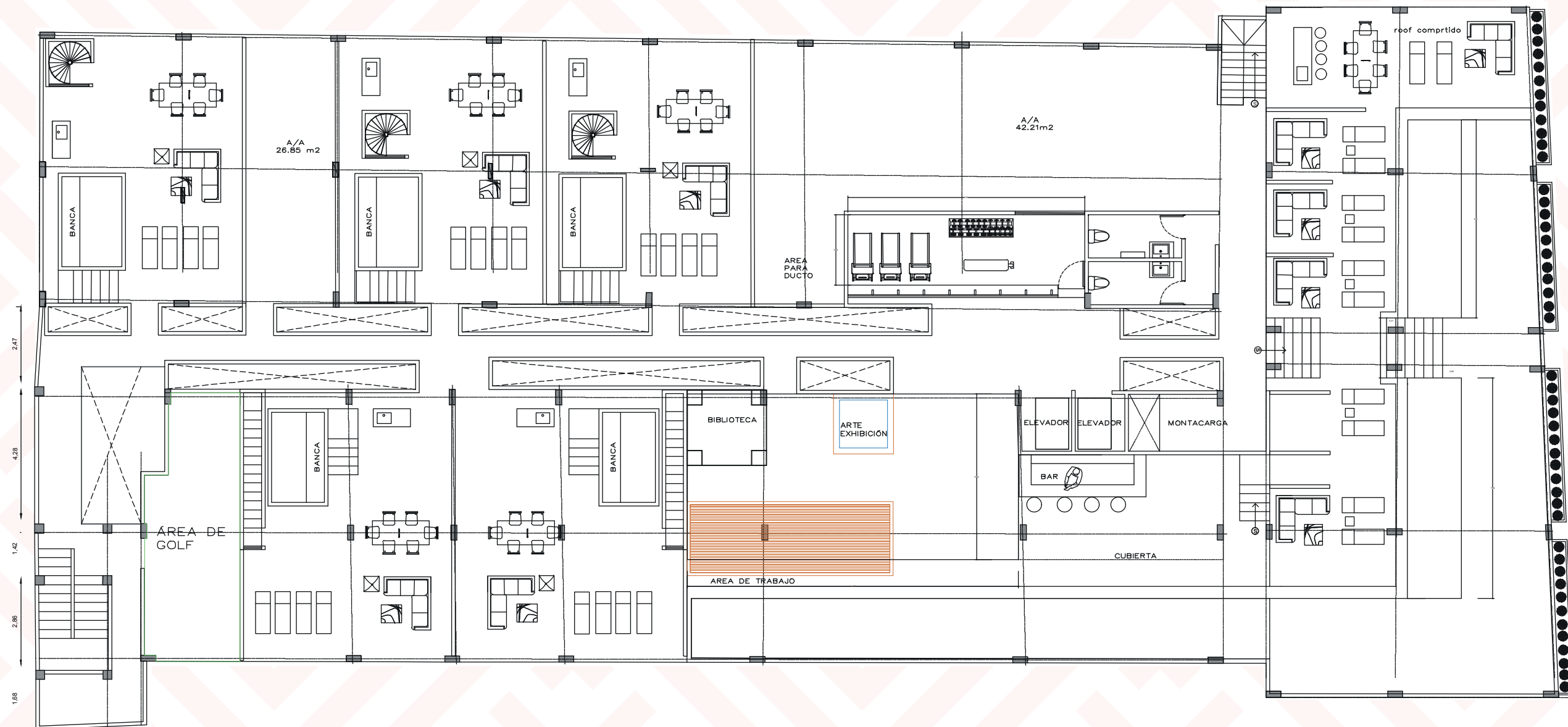
TERCER NIVEL / THIRD LEVEL



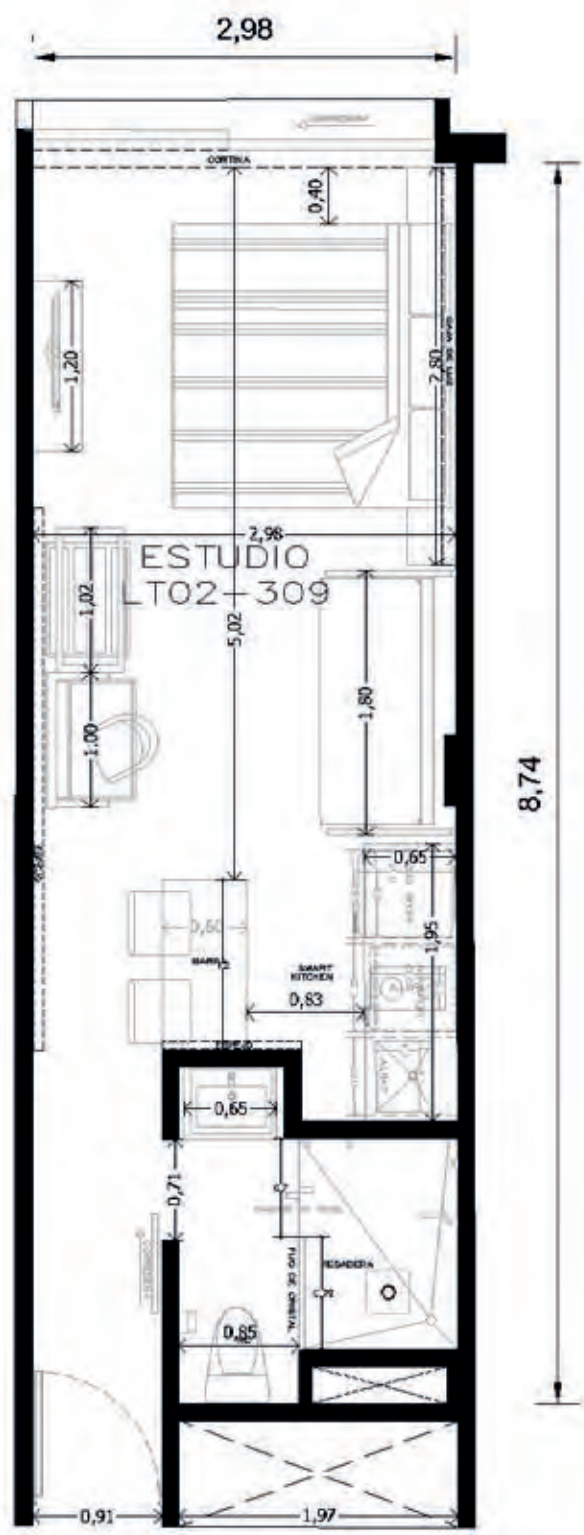
CUARTO NIVEL / FOURTH LEVEL



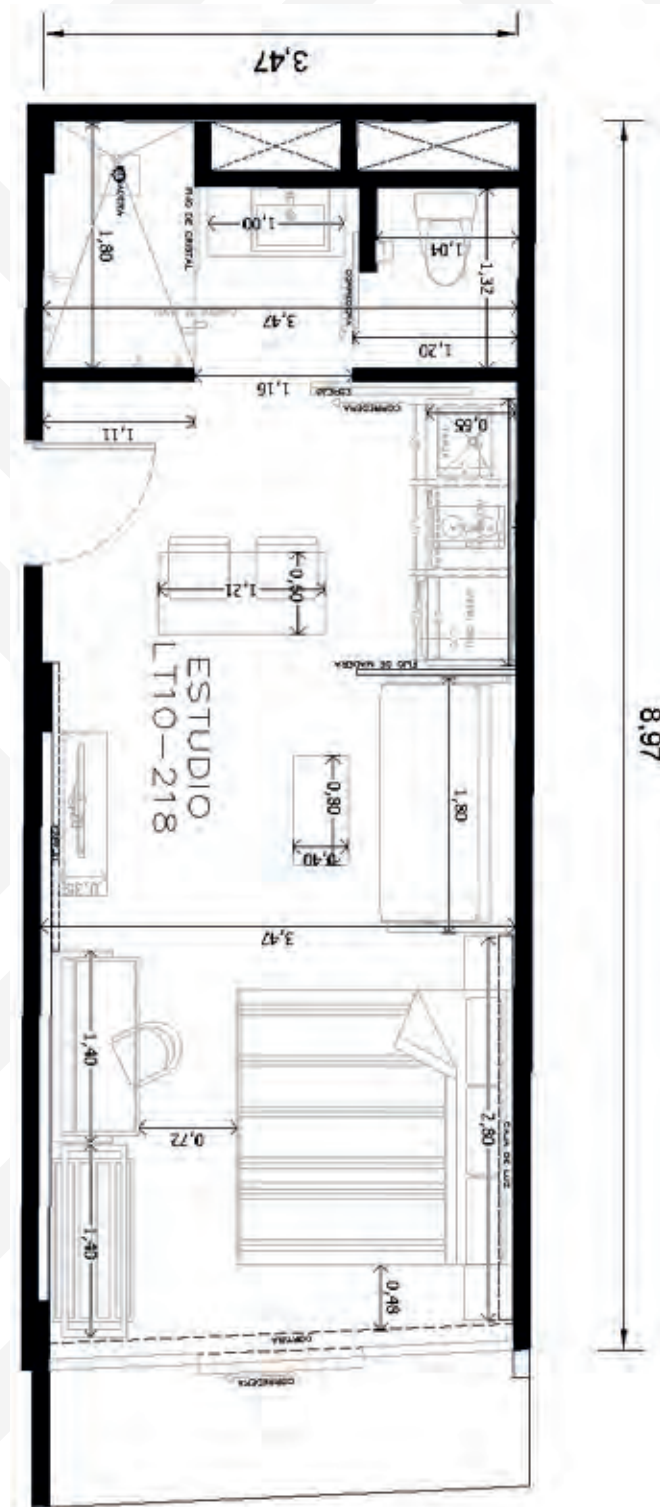
QUINTO NIVEL / FIFTH LEVEL



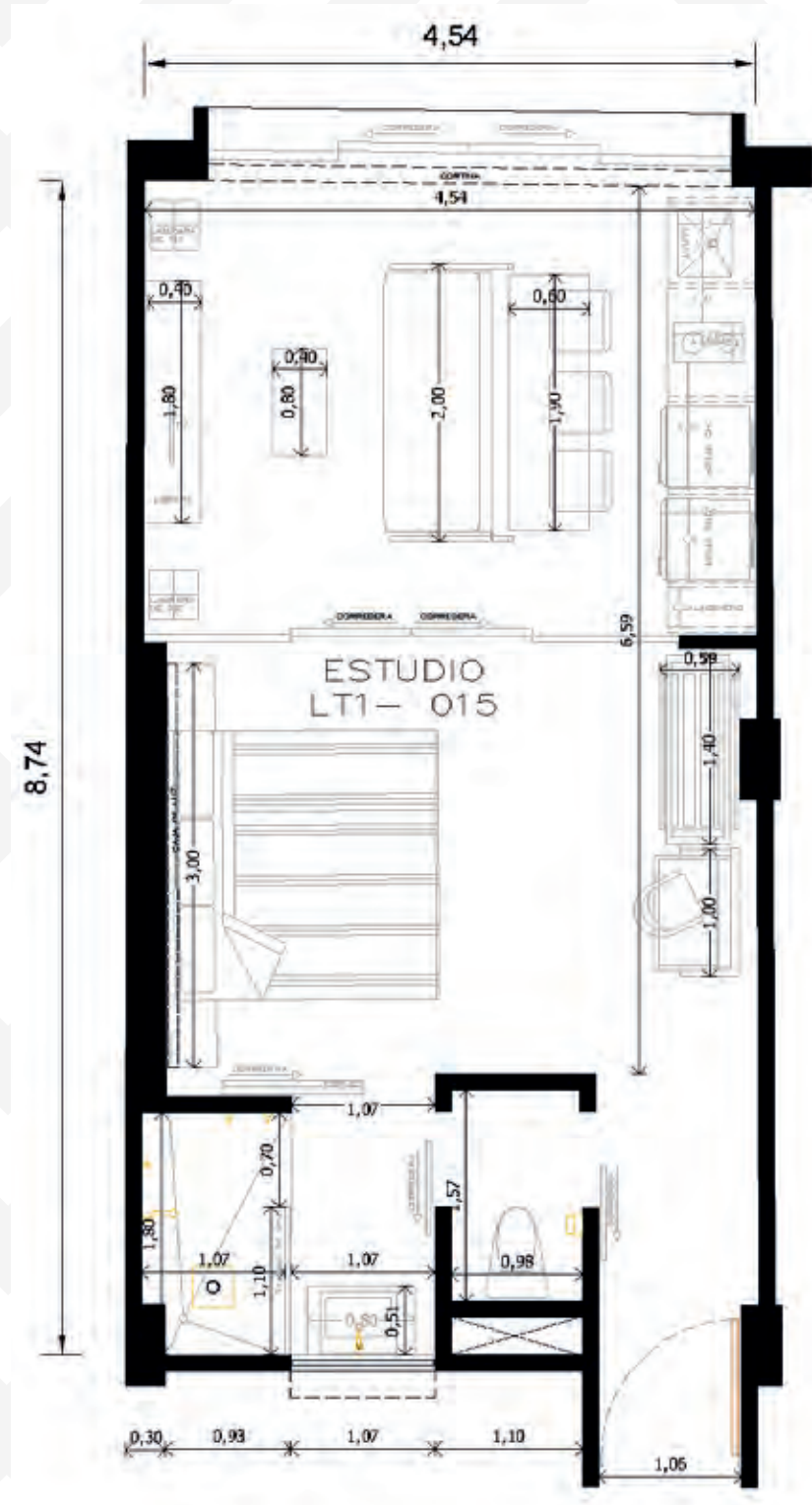
ROOF GARDEN



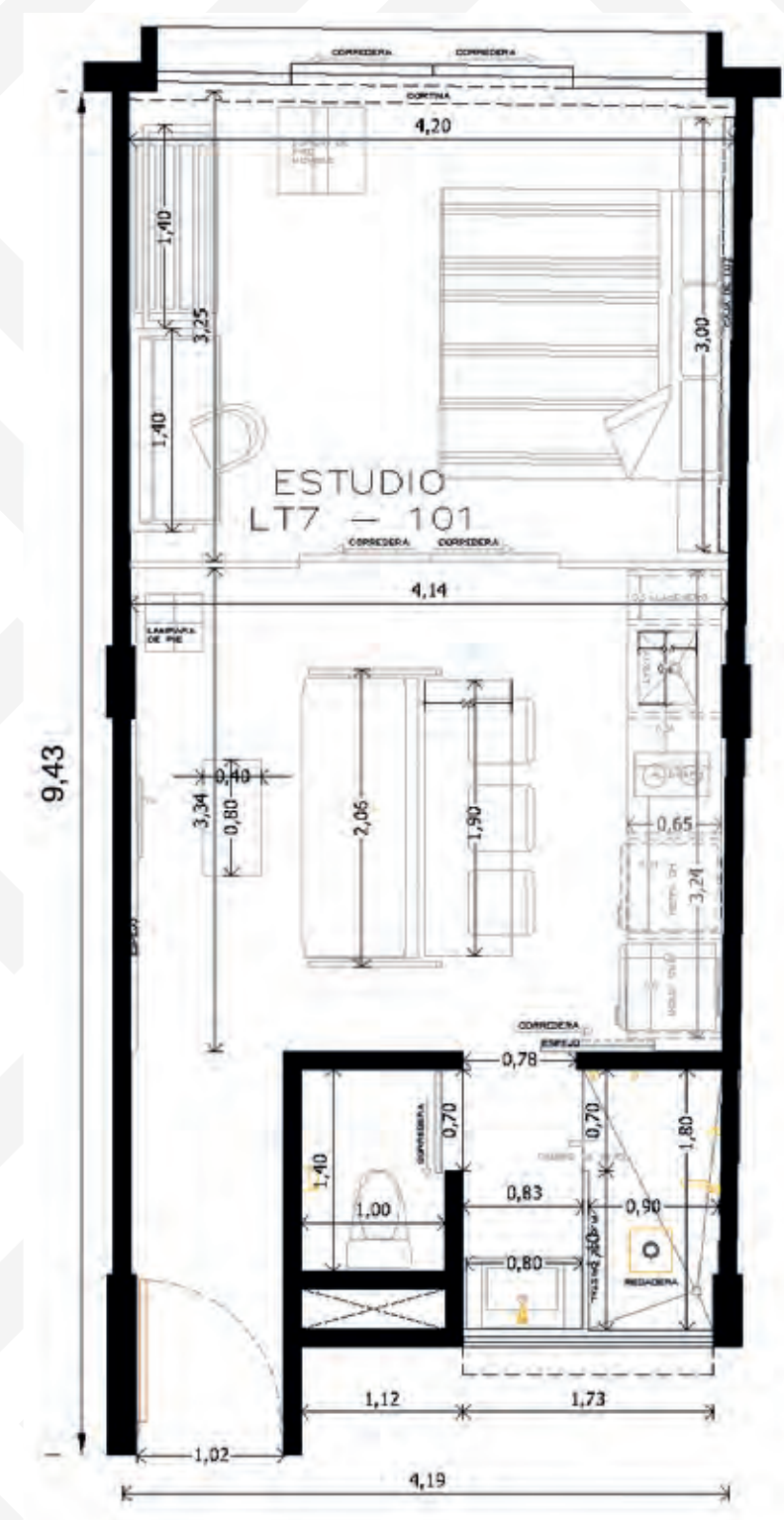
STUDIOS 30m²



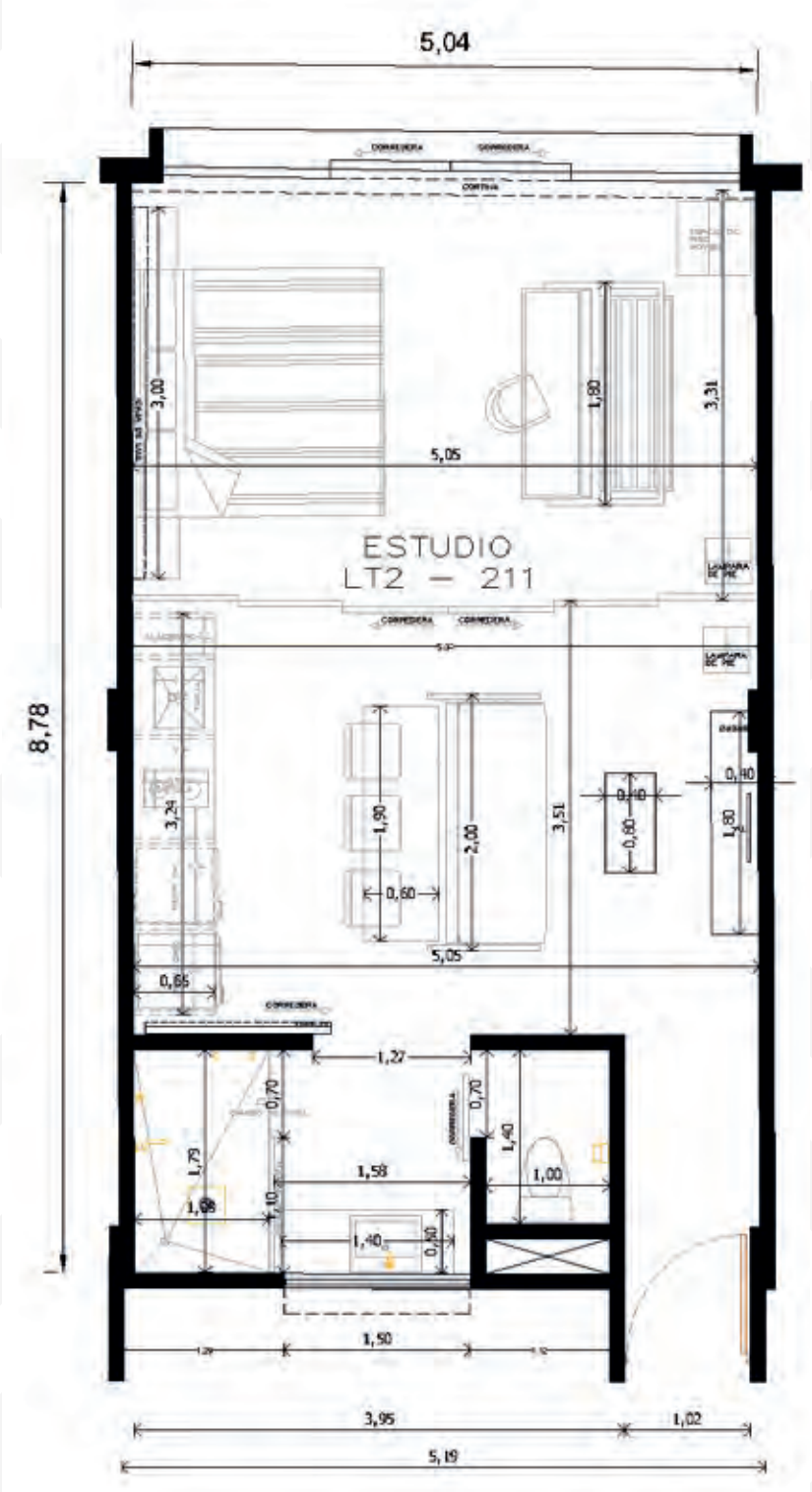
STUDIOS 35m²



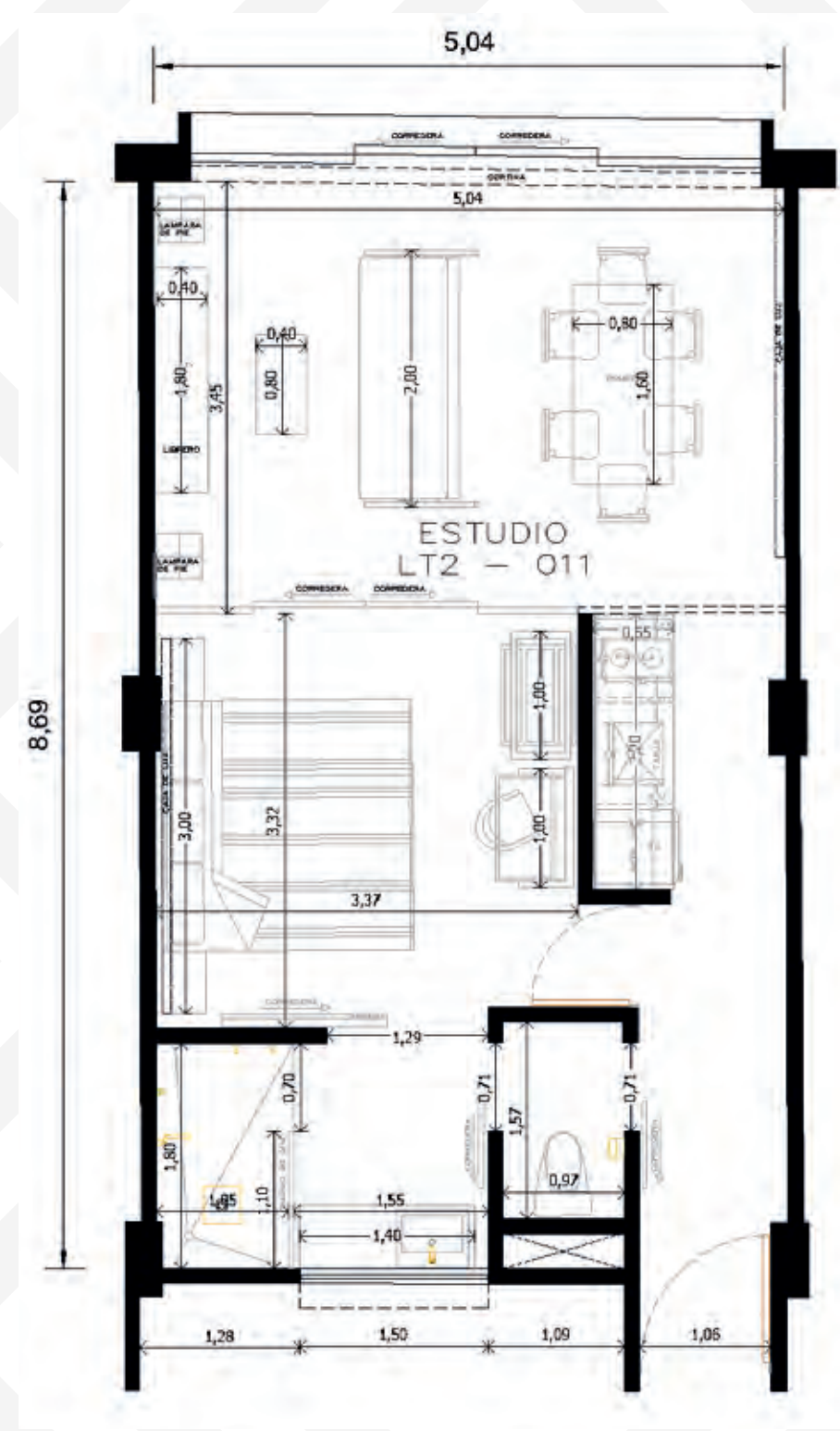
ONE BEDROOM 40m²



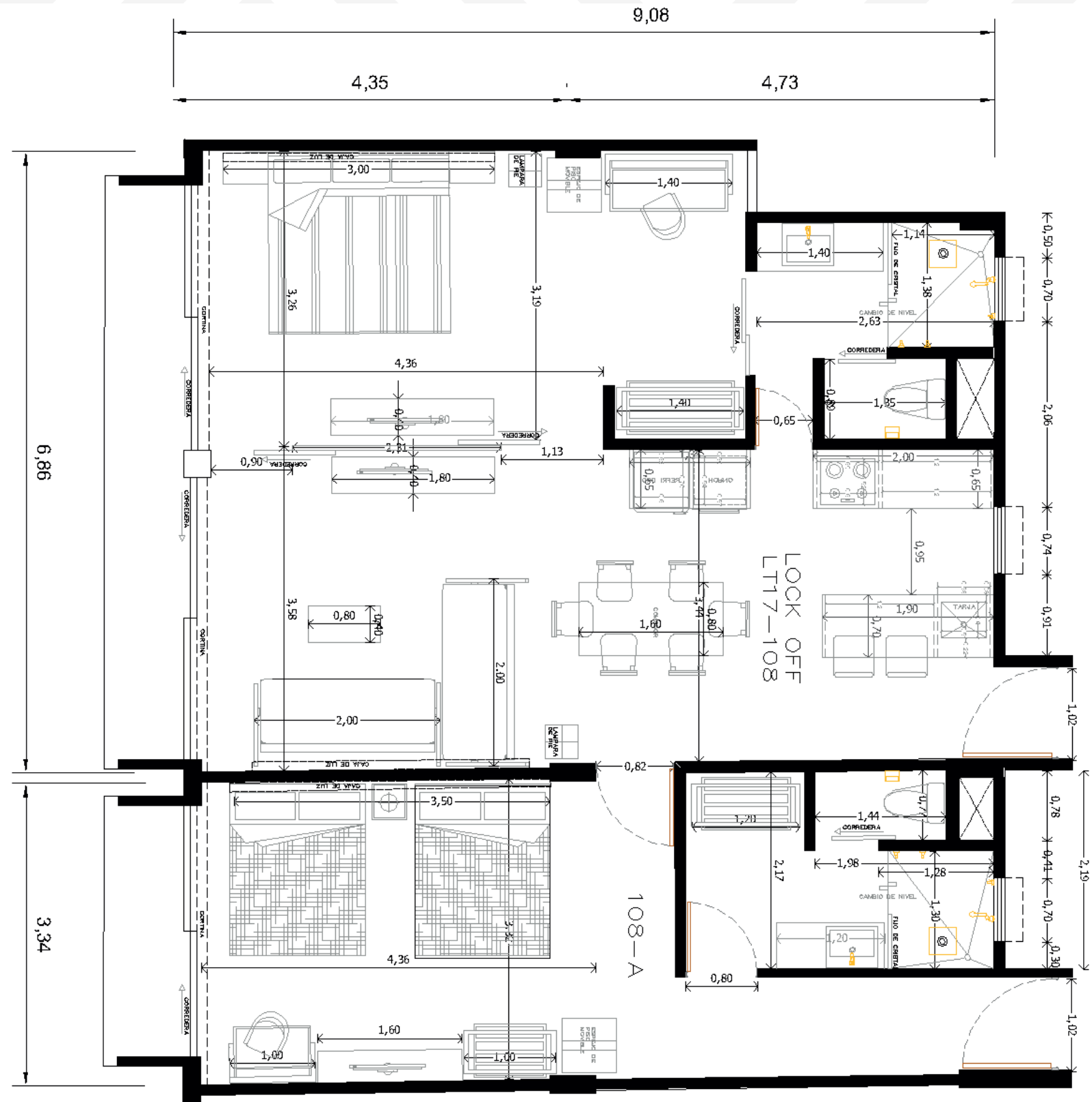
ONE BEDROOM 40m²



ONE BEDROOM 50m²



ONE BEDROOM 50m²



PENTHOUSE LOCK OFF 100m²



la residencia

LOS ACABADOS PODRAN TENER VARIACIONES FINALES SIN ALTERAR LA CALIDAD. ESTAS VARIACIONES PODRAN OCURRIR SIN PREVIO AVISO.

THE INFORMATION CONTAINED WITHIN THIS DOCUMENT IS INTENDED AS A GENERAL GUIDE. THIS INFORMATION DOES NOT CONSTITUTE AN OFFER OR A CONTRACT AND WE (OR ANYONE IN OUR COMPANY) DO NOT IMPLY, MAKE OR GIVE ANY REPRESENTATION, GUARANTEE OR WARRANTY WHATSOEVER RELATING TO THE TERMS CONTAINED WITHIN. ANY INTENDING INVESTOR MUST SATISFY THEMSELVES AS TO THE CORRECTNESS OF ANY OF THE STATEMENTS, PLANS OR IMAGES CONTAINED WITHIN. IMAGES ARE FOR REPRESENTATIONAL PURPOSES ONLY. THE CONTENT CONTAINED WITHIN IS CORRECT ADHERING TO THE PREVIOUS STATEMENT AT THE TIME OF PUBLISHING.

PLAYA DEL CARMEN Q. ROO.