



රිමා

TULUM CONDOS







RELEASE YOUR SPIRIT, and find the purpose of freedom.

- 2nd Phase of 21 units.
- 1 y 2 Bedrooms
- 4 Levels
- Rooftop with incredible amenities
- Connected river and pool

Located in the Holistika region:
Sanctuary that offers a space for those who desire **WELL-BEING, PEACE AND HAPPINESS**

LIBERATOR - DEITY - PURITY

Rama is a Sanskrit Vedic word, which in some contexts means “pleasant, delightful, charming, beautiful”.

In the Hindu religion, Rama is a descent from the god Vishnu, born in India to free her from the yoke of the demon Ravana, considered by many Hindus as a historical figure.

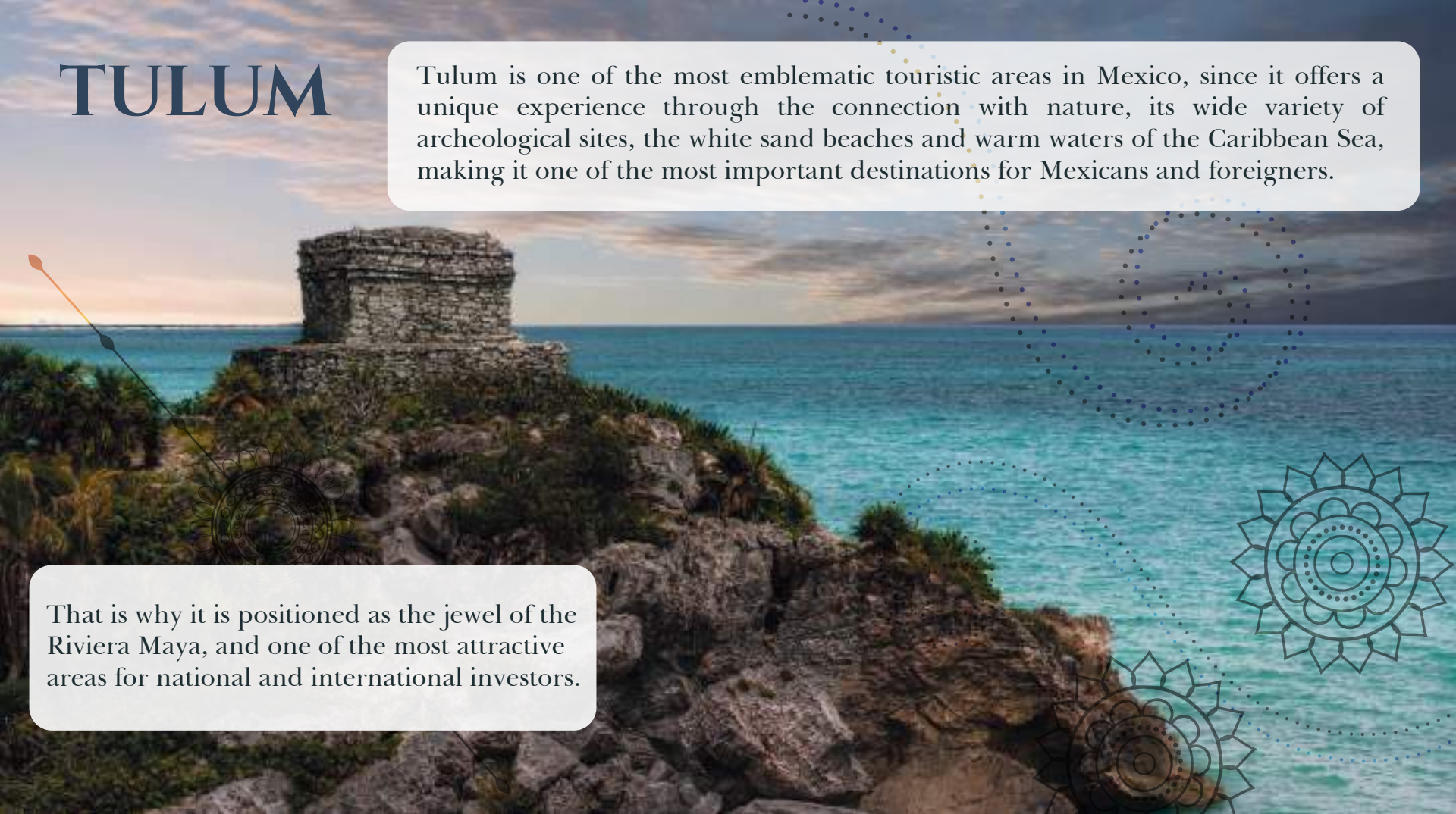
The Ramayana is one of the great Hindu epics of 24,000 verses in seven books and 500 songs and tells Rama’s story, whose wife Ravana, the king of Lanka, kidnaps Sita. The name is composed of Rama and Ayana, translated as “Rama’s Journey”.

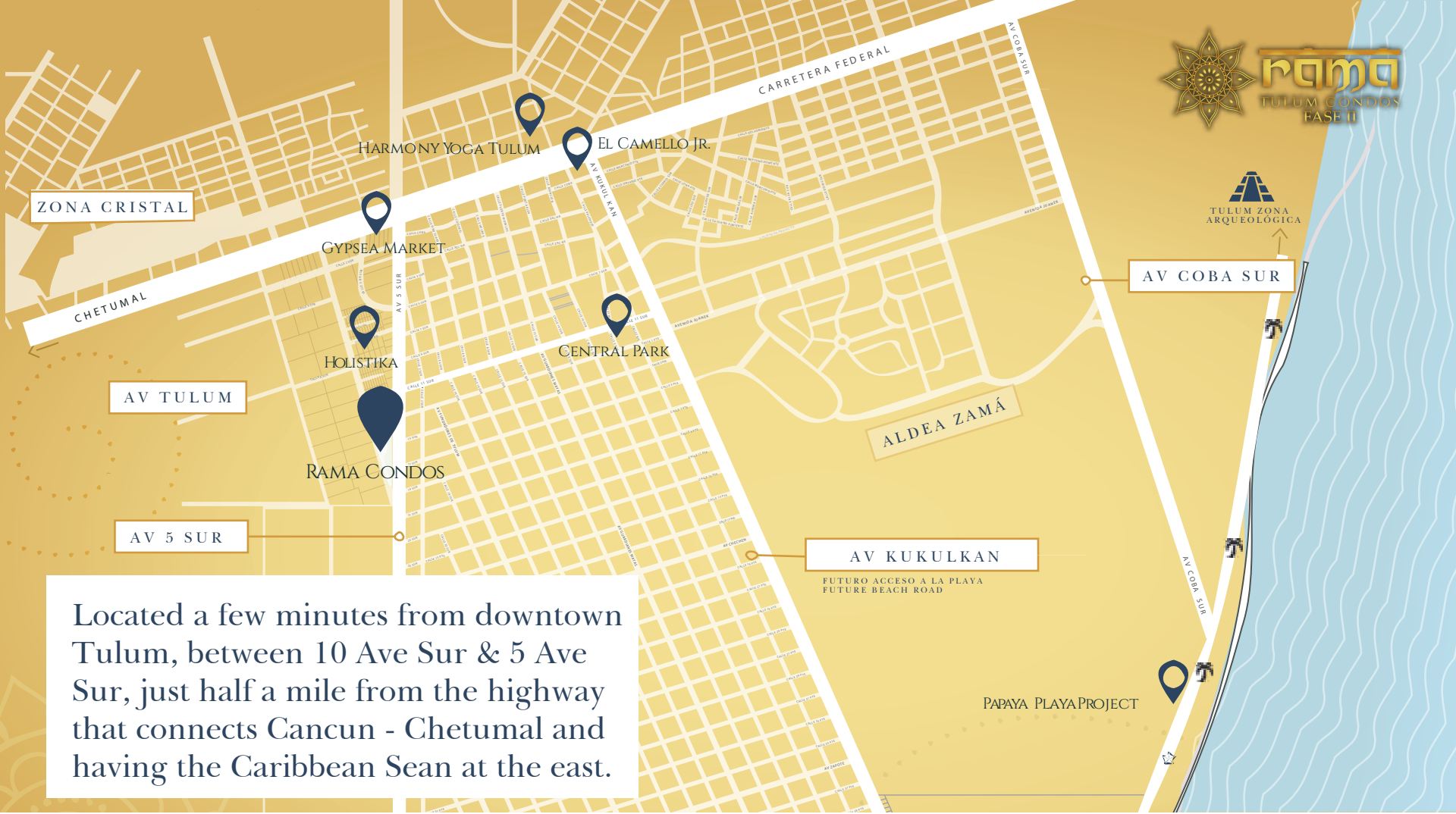


TULUM

Tulum is one of the most emblematic touristic areas in Mexico, since it offers a unique experience through the connection with nature, its wide variety of archeological sites, the white sand beaches and warm waters of the Caribbean Sea, making it one of the most important destinations for Mexicans and foreigners.

That is why it is positioned as the jewel of the Riviera Maya, and one of the most attractive areas for national and international investors.





ZONA CRISTAL

HARMONY YOGA TULUM

EL CAMELLO JR.

GYPSEA MARKET

HOLISTIKA

CENTRAL PARK

RAMA CONDOS

ALDEA ZAMÁ

AV COBA SUR

AV TULUM

AV 5 SUR

AV KUKULKAN

FUTURO ACCESO A LA PLAYA
FUTURE BEACH ROAD

PAPAYA PLAYA PROJECT

Located a few minutes from downtown Tulum, between 10 Ave Sur & 5 Ave Sur, just half a mile from the highway that connects Cancun - Chetumal and having the Caribbean Sea at the east.

RECEPTION



AMENITIES GROUND FLOOR



1 Reception Desk



2 Pool



3 Bathroom



4 River



5 Parking Lot



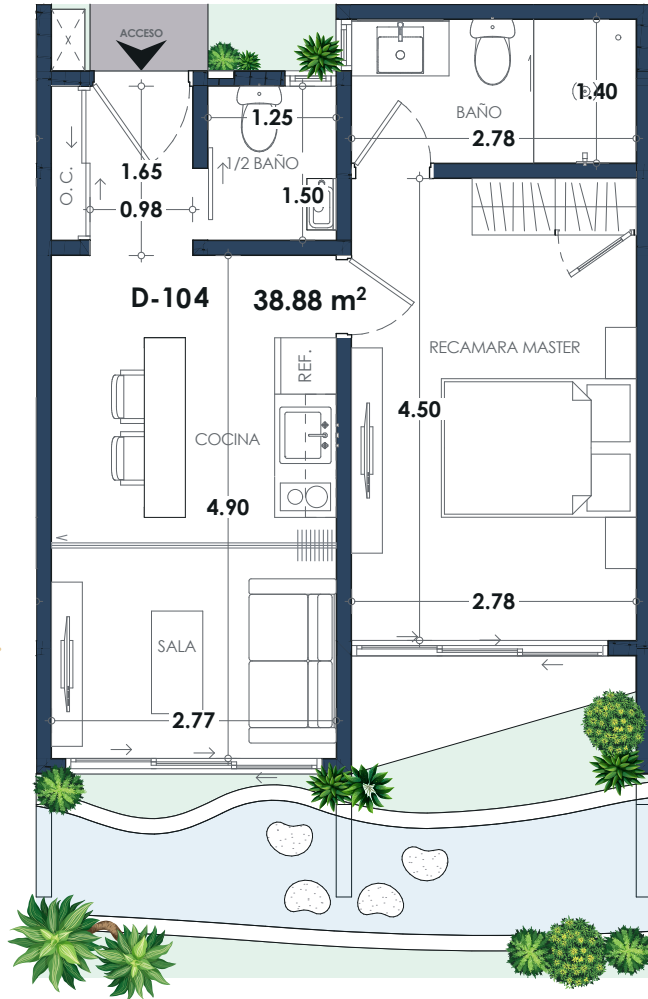
GROUND FLOOR POOL

AMENITIES ROOFTOP





ROOF

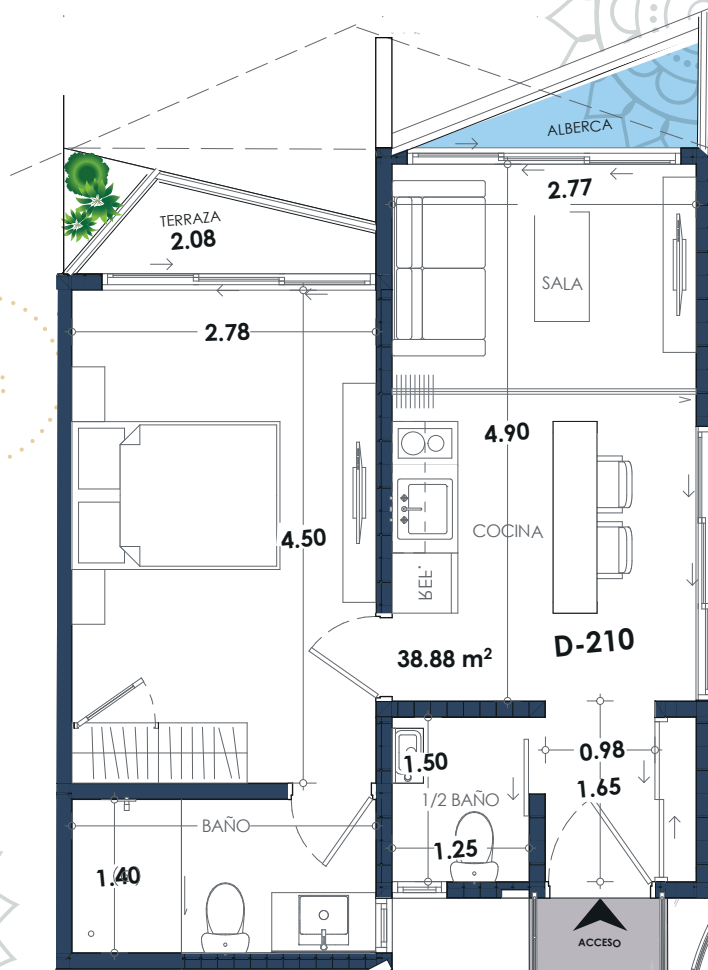


SWIM UP CONDO

- 1 Bedroom
- 38.88 m² / 418 SQFT
- 1.5 Bathrooms
- Living room
- Fitted Kitchen
- Breakfast table
- Deck Garden
- Fully equipped

SWIM UP CONDO



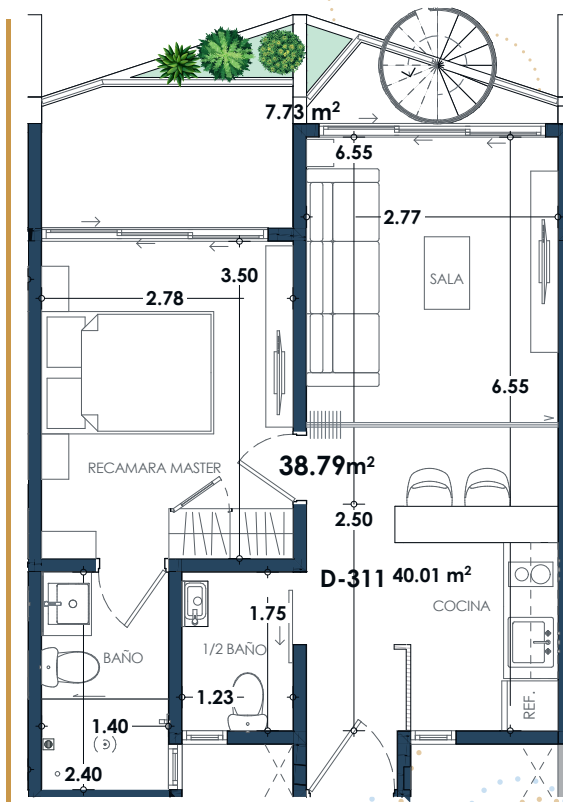
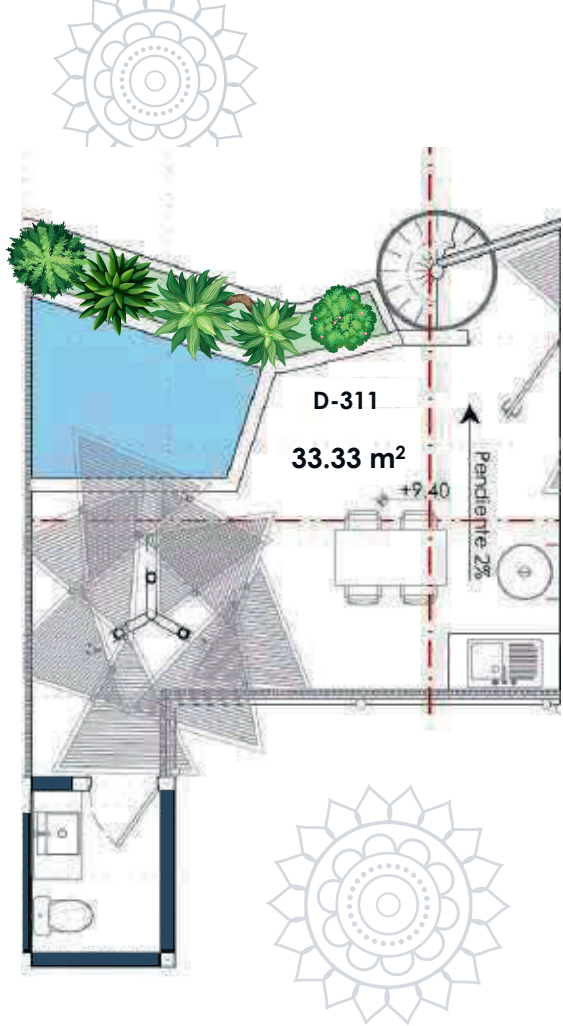


CONDO

- 1 Bedroom
- 43.20 m² / 465 SQFT
- 1.5 Bathrooms
- Living Room
- Fitted Kitchen
- Breakfast table
- 1 Terrace
- 1 Plunge pool
- Planter
- Fully Equipped

CONDO





PENTHOUSE

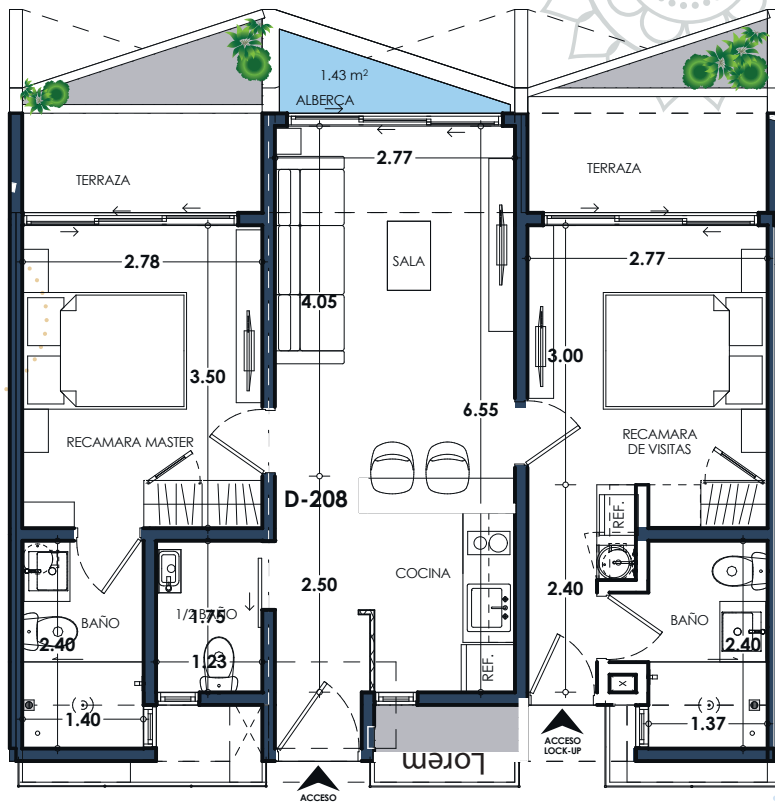
- 1 Bedroom
- 76.89 m² / 827 SQFT
- 1 Bathroom
- 2 Half Bathroom
- Fitted Kitchen
- Living room
- Breakfast table
- BBQ Rooftop
- 2 Private terraces
- Planters
- Fully equipped
- Plunge pool
- Rest area with pergola

PENTHOUSE





ROOF PH

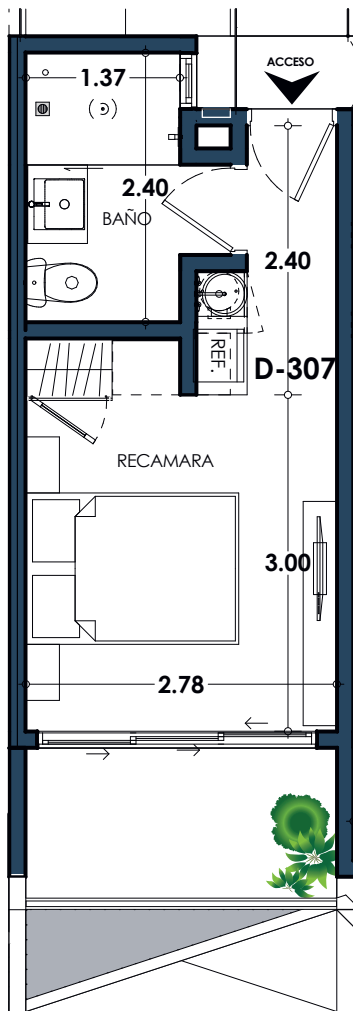


LOCK OFF

- 2 Bedrooms
- 70.29 m² / 756 SQFT
- 2.5 Bathrooms
- Living room
- Fitted Kitchen
- Breakfast table
- 2 Private terraces
- 1 Plunge pool
- Planters
- Fully equipped
- 1 Lock Off

LOCK OFF





SUITE

- 1 Bedroom
- 23.82 m² / 256 SQFT
- 1 Bathroom
- Kitchenette
- Terrace
- Fully Equipped

