



SANCTUARY HOMES



MAHA

Maha Sanctuary Homes is a meeting of big dreams and vibrant architectural design created to embody an emotional meaning that transcends us all.

ARCHITECTURE AND INSPIRATION



ARCHITECT
Edgar Marín

Recognised by Architecture World Community, Edgar Marín boasts more than 20 years of architectural and construction design. He has developed innovative projects of great value to the urban surroundings of Mexico across the country, collaborating with several of the country's leading design studios.



AMENITIES



Water Moon Lobby



Grill



Piscina



Hammock Ground



Jacuzzi



ANHA
SANCTUARY HOMES

THE DUALITY

WATER MOON LOBBY

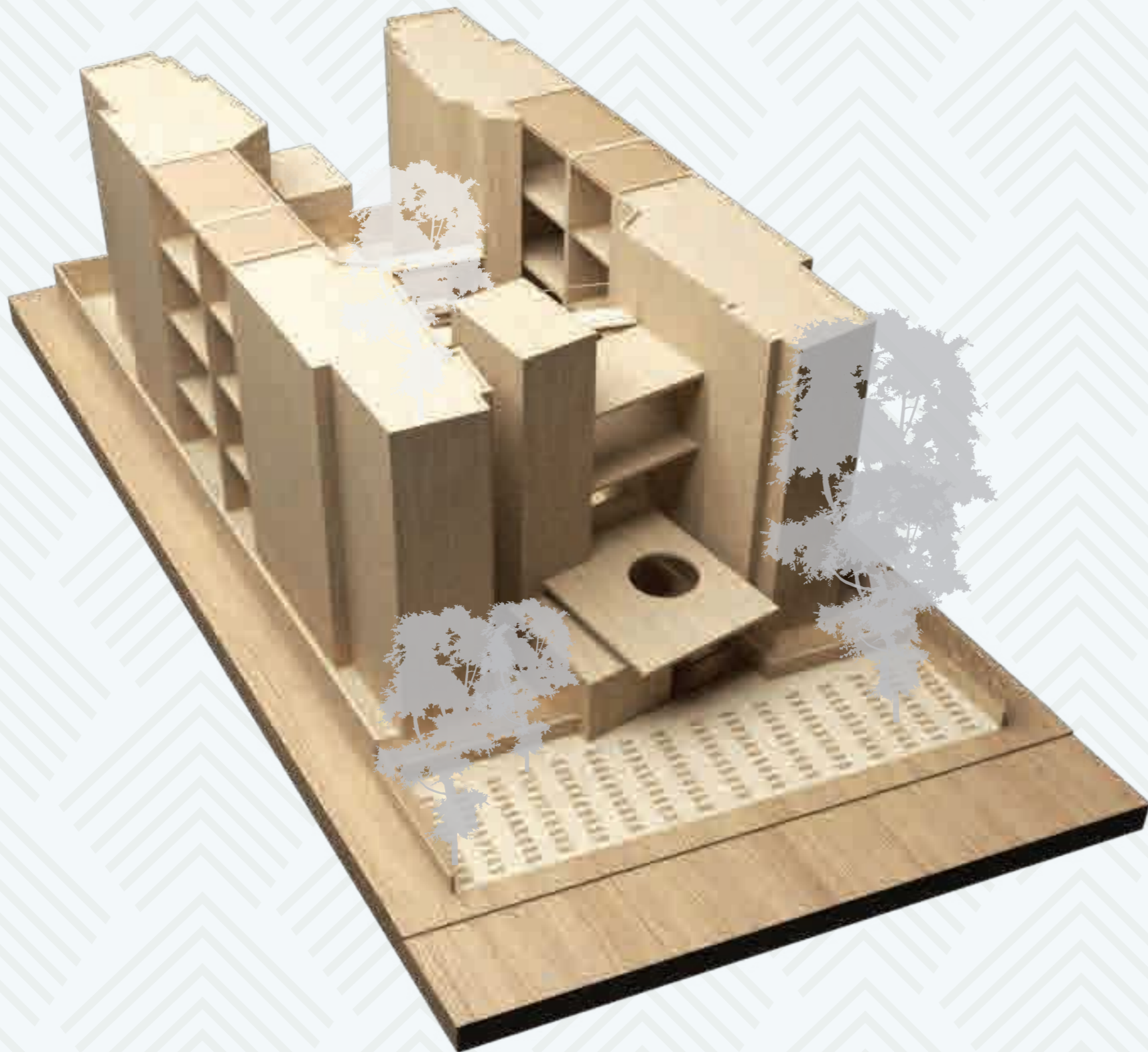


HAMMOCK GROUND

HIGHLIGHTS

- 🌿 Green areas
- 🌿 Controlled access
- 🌿 24-hour security
- 🌿 Eco-technologies
- 🌿 Natural indoor gardens
that provide clean air





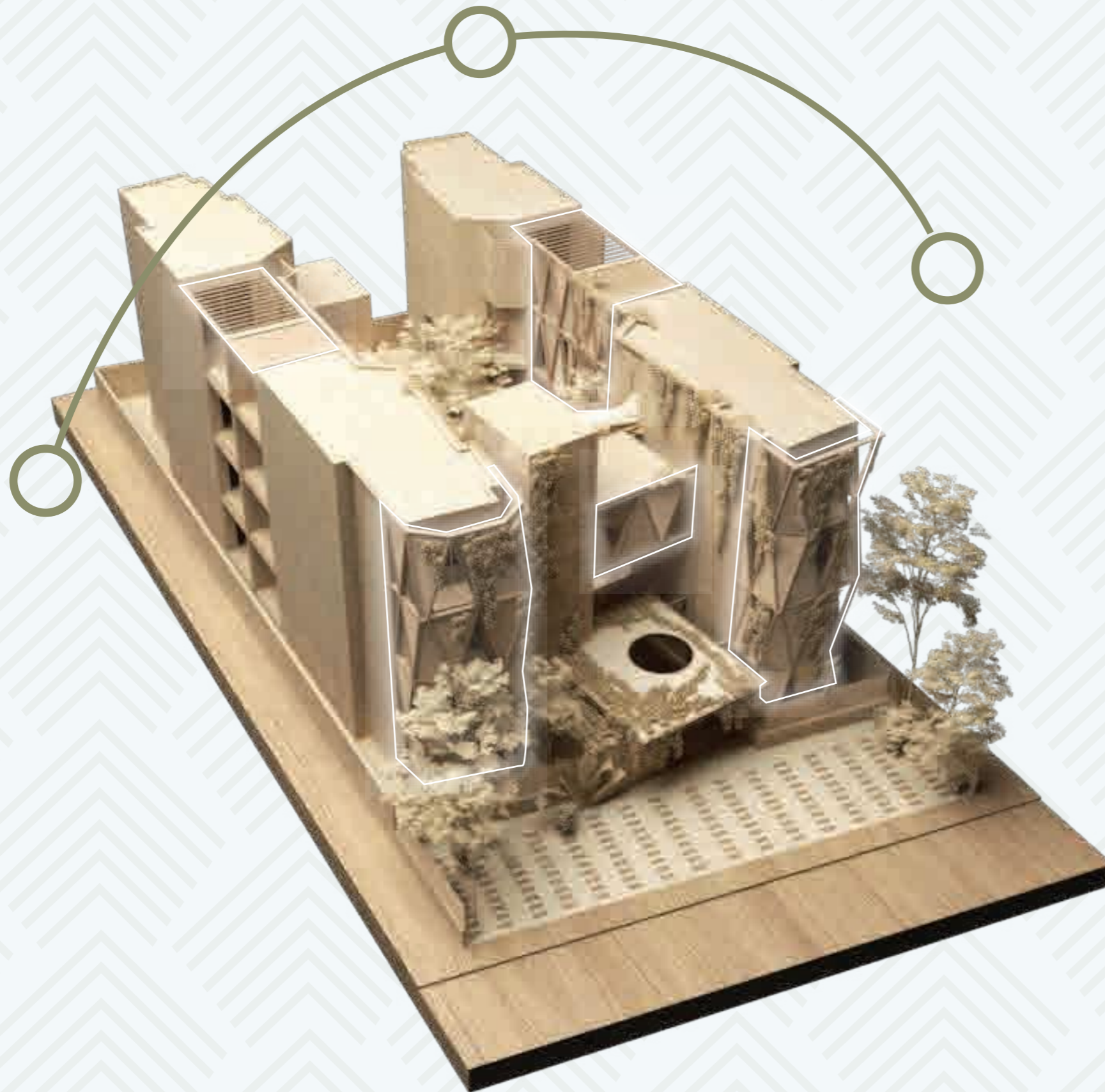
VEGETATION

The design of the green areas allows for the creation of microclimates and spaces that blur the lines between what is in and outside the development.



AREAS

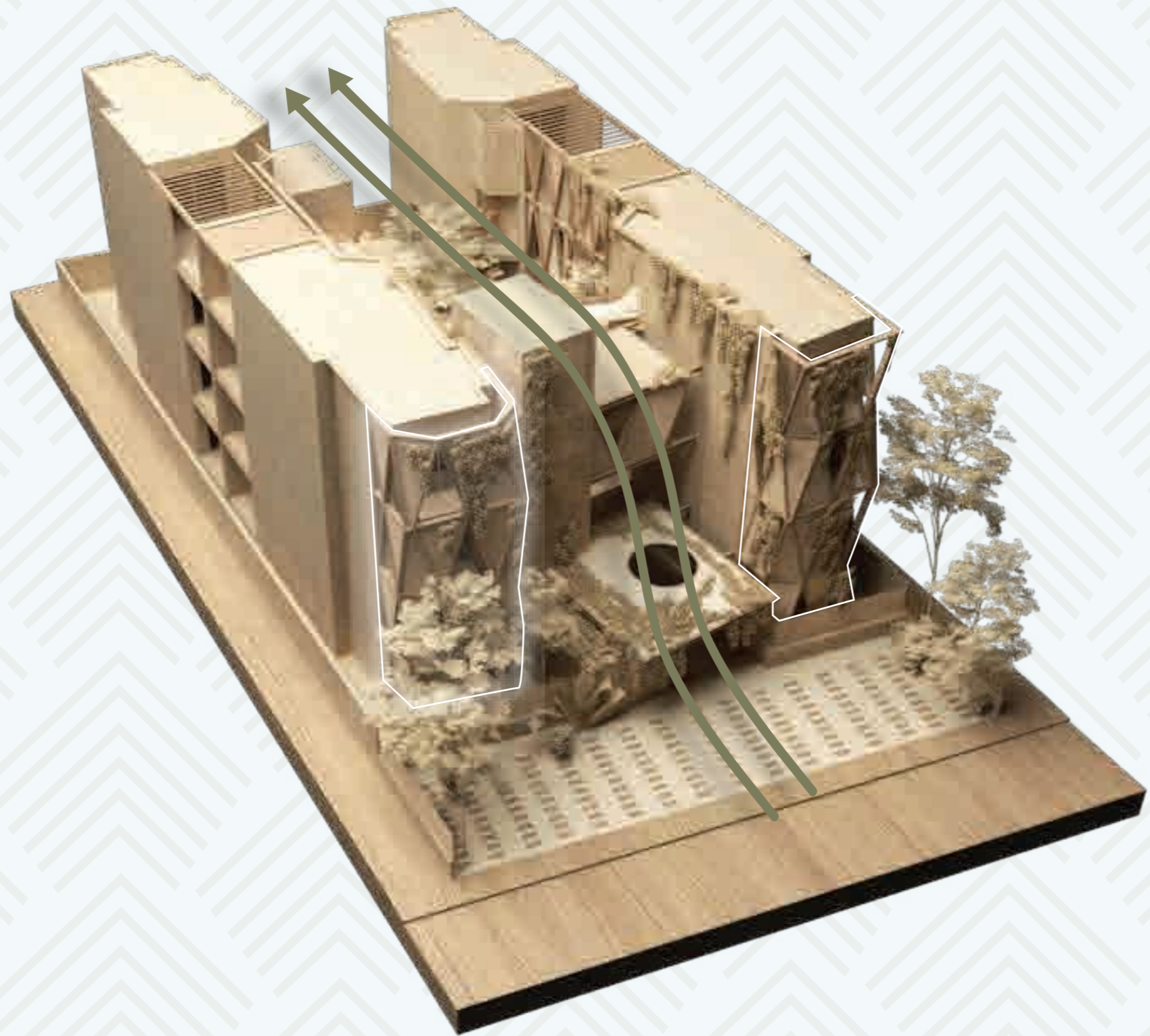
We have revolutionized the way in which you inhabit a space with an architectural design that plays with the distinctive dynamism and serenity of the region..



SUNLIGHT

We have used building resources that are used specially to bring sustainability and thermal comfort to the building project.





WIND

We have included materials that are both functional and aesthetically pleasing that favor the parameters of thermal comfort in the spaces.



MASTER PLAN

Ground

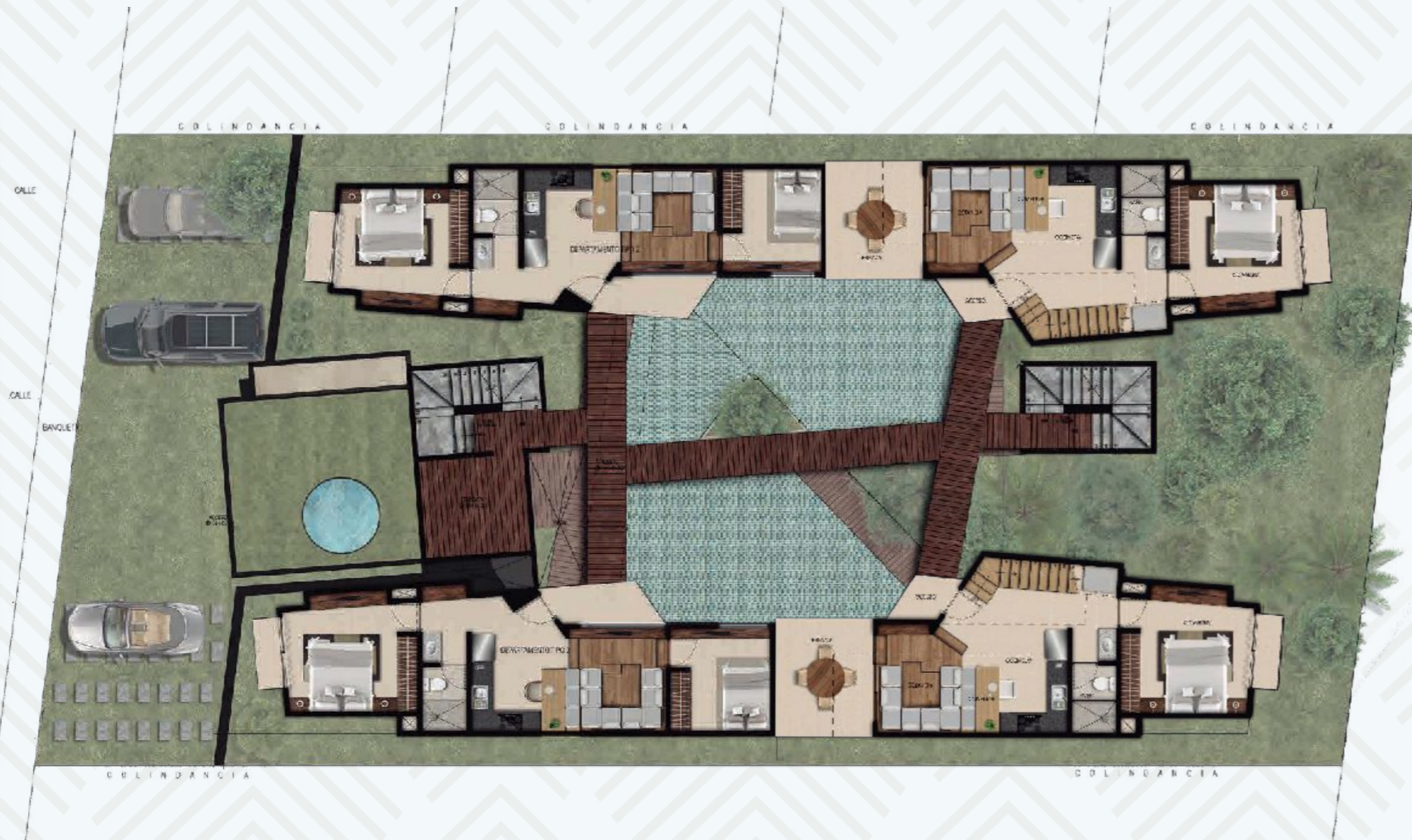
Maha Tulum is the result of the evolution of an architectural project that was dreamed up and designed for those who are looking to experience the exclusivity of living in a space that is in contact with nature.



MASTER PLAN

Level 1

Maha Tulum is the result of the evolution of an architectural project that was dreamed up and designed for those who are looking to experience the exclusivity of living in a space that is in contact with nature.



MASTER PLAN

Level 2

Maha Tulum is the result of the evolution of an architectural project that was dreamed up and designed for those who are looking to experience the exclusivity of living in a space that is in contact with nature.



MASTER PLAN

Level 3

Maha Tulum is the result of the evolution of an architectural project that was dreamed up and designed for those who are looking to experience the exclusivity of living in a space that is in contact with nature.



LIVING ROOM



TERRACE



ANANDA

BLISS, BLESSEDNESS, HAPPINESS

We have designed interiors that prioritize natural light and ventilation so that you can feel harmony and tranquillity while you enjoy spaces such as the jacuzzi area.



1 Bedroom



Dinner room



Full bathroom



Living room



Kitchen



Jacuzzi

Unit with two bedrooms, one full bathroom, kitchen, diner and foyer with a surface area of 672.7 ft²

ANANDA

672.7 ft²





CHETANA

CONSCIOUSNESS, INTERIOR AWAKENININ

With spacious bedrooms, living room, diner and foyer, the CHETANA apartment incorporates architectural ideas and trends to offer you comfort, innovation and style in an extraordinary space.



2 Bedrooms



Dinner room



Full bathroom



Foyer



Kitchen

With spacious bedrooms, living room, diner and foyer, the CHETANA apartment incorporates architectural ideas and trends to offer you comfort, innovation and style in an extraordinary space of 694.4 ft².

CHETANA

694.2 ft²



Ground



LEVEL 1



PURNA LOFT

FULFILLED, COMPLETE, INFINITE

With the goal in mind of bringing your visions into material form, the PURNA apartment boasts spaces with a design that seduces your senses through its spacious bedrooms, terrace, jacuzzi and foyer.

Two floor unit with two bedrooms, two full bathrooms, one kitchen, 1 sleeping area, 1 diner, foyer and jacuzzi in a total surface area of 1449.4 ft²

PURNA LOFT

1449.4 ft²



LOCATION

Our complex is nestled in the center of the new Tulum expansion, surrounded by nature that transforms all of the units in the area into comfortable environments where sustainability and a connection with nature are the most important factors to make these spaces your new home.

**STREET 11 SOUTH BETWEEN STREET 8 Y STREET 6, REGION 15;
TULUM, QUINTANA ROO; MEXICO.**

LOT 004 BLOCK. 004

