

TULUM — Q. ROO

MX

RESIDENCE PARADISE

# GRAN TULUM

GRANTULUM.MX



GRAN TULUM

RESIDENCE PARADISE

TULUM — Q. ROO

MX

GRANTULUM.MX

# PARADISE SNEAKS AT YOUR WINDOW





Your day begins with a wonderful realization:  
you're in Tulum, a magical town whose natural  
scenery recreates a piece of paradise.



GRAN TULUM

RESIDENCE PARADISE

TULUM — Q. ROO

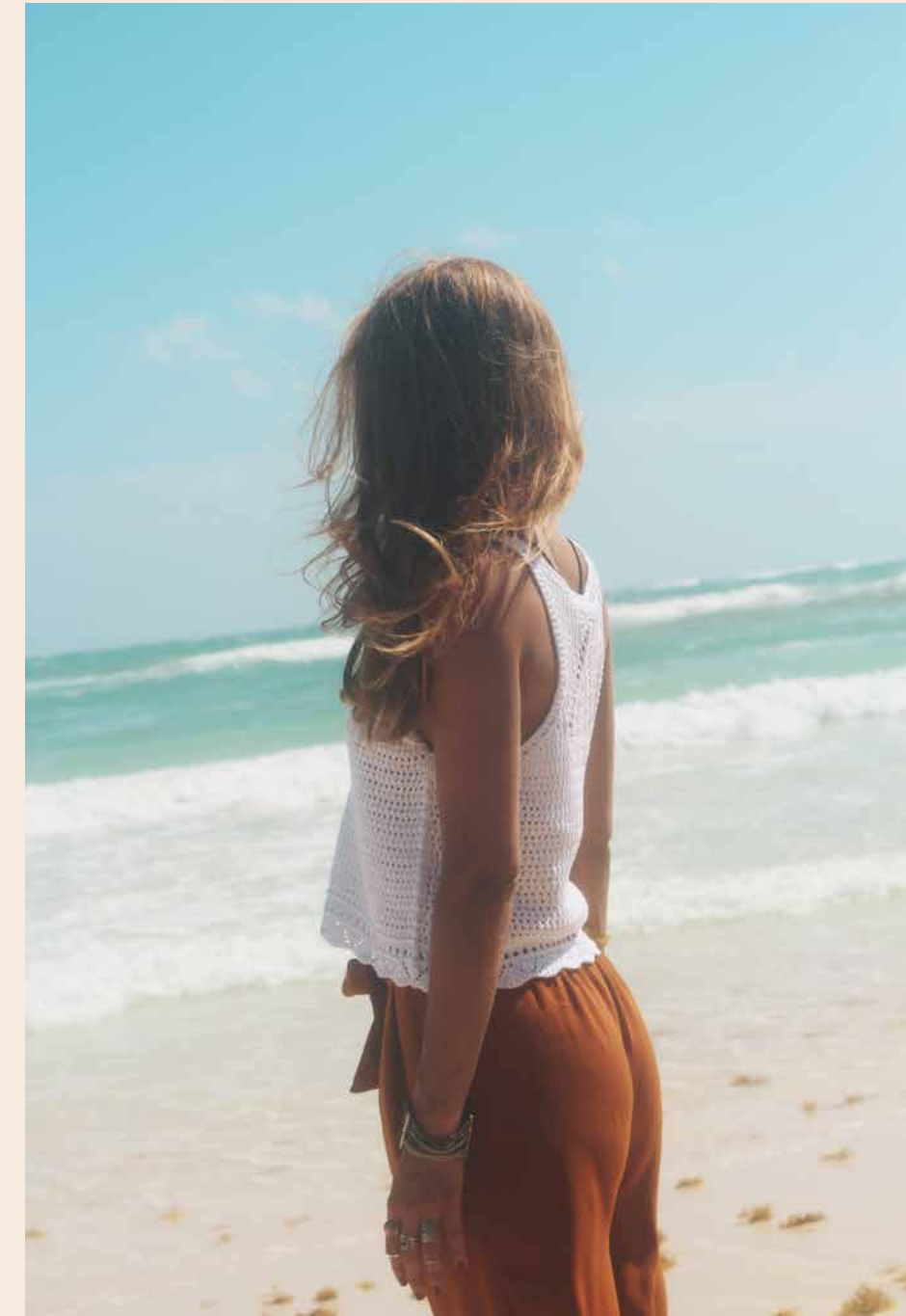
MX

GRANTULUM.MX





Over the Coba avenue, on the road that approaches the sea, there's a place that welcomes you to paradise: that place is Tulum 101, a gated community designed to honor the jungle.



¿QUÉ ES TULUM 101? / WHAT IS TULUM 101?



We call it the gateway to paradise: the sea view can be enjoyed from any point because of the unobstructed views from the rooms.

The construction guidelines were designed to harmonize with the environment.

MASTER PLAN

# TULUM 101



Gateway to paradise: Gran Tulum



GRAN TULUM

RESIDENCE PARADISE



TULUM — Q. ROO — MX

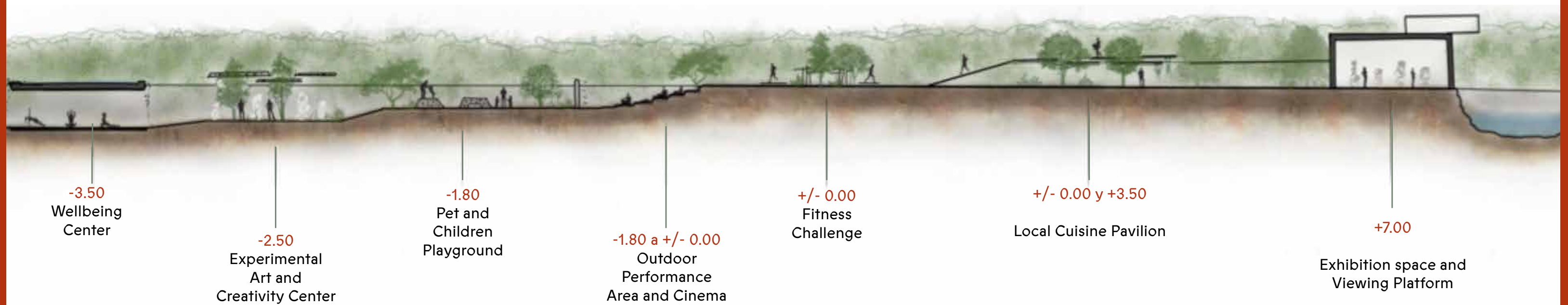
GRANTULUM.MX

## ABOUT THE PROJECT



LOCAL CUISINE PAVILION

Social bonds are being strengthened among a vibrant community of people who have been enchanted by Tulum 101.



## A WALK OF THE INFRAMUNDO TO THE UNIVERSE

This complex will contain amenities located on a walk inspired by Mayan mysticism and its concept of life.

It will start at -3.5m below earth level, the underworld and land of Xibalbá, with a SPA to relax the senses and connect with the deepest of the existence of man.

The journey continues at -2.5 m with the "Center for Creativity and Experimental Art", followed by a beautiful space for Children and Pets".

**At -1.8** meters the curvature of the earth will be used to create.

**At level 0.0**, that is, on the ground plane, you can work in the physical body, the Fitness 'Fitness Challenge', as we have called it.

The road does not end there, we go hand in hand with the Maya towards the stars, to paradise.

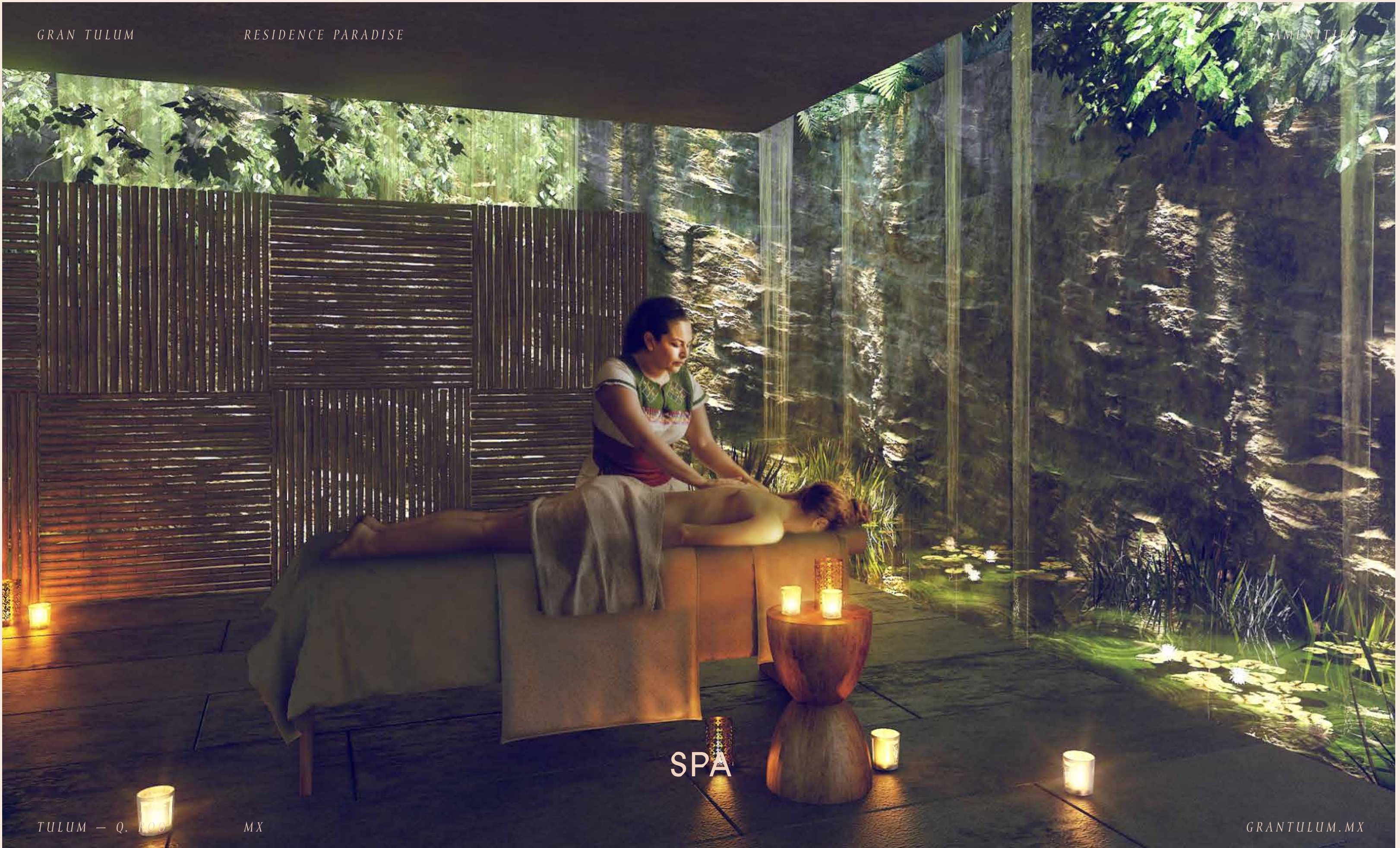
**With 3.5** mtrs high, we will be in the treetops enjoying the view and life as if we were birds. You can enjoy fruit trees at your fingertips along with a "Local cuisine pavilion".

We will finish this tour in paradise, at a height of 7 meters with a space for art exhibitions that will be accompanied by a spectacular viewpoint to the jungle and the sea.

# AMENITIES



## UNDERGROUND SPA



SPA



## FITNESS CHALLENGE



LOCAL CUISINE PAVILION



## LOCAL CUISINE PAVILION



# OUTDOOR PERFORMANCE AREA AND CINEMA



GRAN TULUM

RESIDENCE PARADISE

AMENITIES

EXHIBITION SPACE AND OBSERVATION DECK

TULUM → Q. ROO

MX

GRANTULUM.MX

WELL BEING CENTER

EXPERIMENTAL ART & CREATIVITY  
CENTER

PET & CHILDREN PLAYGROUND





GRAN TULUM

RESIDENCE PARADISE

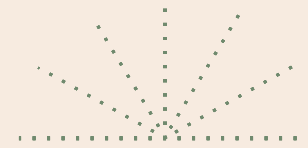
# A TROPICAL LUXURY



TULUM — Q. ROO

MX

GRANTULUM.MX



RESIDENCE PARADISE

# GRAN TULUM

Live a natural paradise in Tulum 101



Your relaxed breathing resembles  
the gentle breeze that makes the  
wild vegetation dance.





● TULUM

● ZONA ARQUEOLÓGICA TULUM

● PLAYA PESCADORES

● ALDEA ZAMA

● AV. COBA



TULUM 101

Gated Community

GRAN TULUM

● PAPAYA PLAYA

LOCATION

CARRETERA TULUM-BOCA PAILA KM. 3.8, LOTE 48  
ADMO. CARR. FED. PLAYA TULUM, (77780)  
TULUM - Q. ROO MX





## LOCATION

Gran Tulum is located in one of the most paradisiacal areas in the world. Inside the gated community closest to the beach. A place that maintains its ancestral vibe.

# MASTER PLAN



245 UNITS | 2 BEDROOMS | 2 BATHROOMS | LOCK OFF UNITS





# AMENITIES



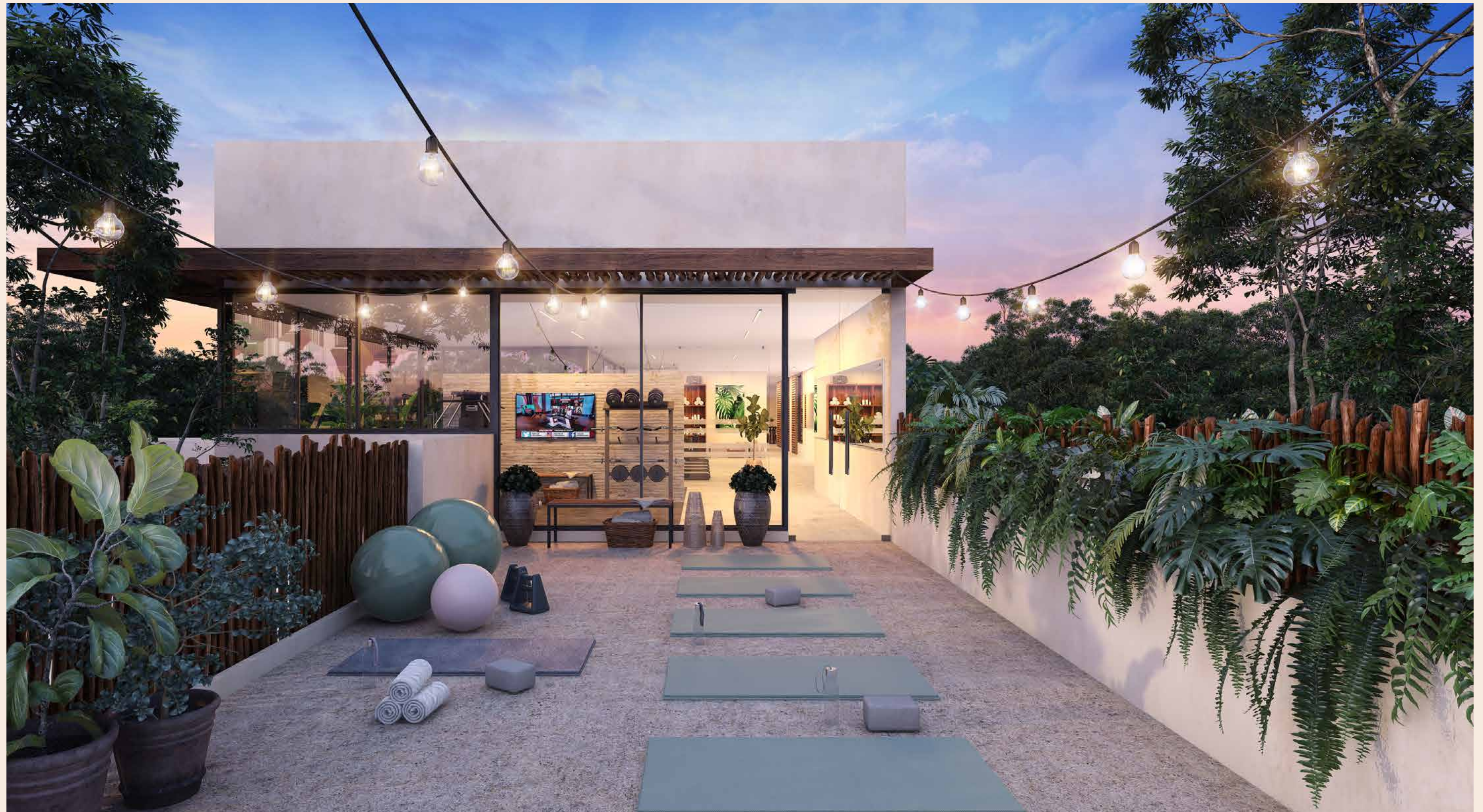
pool view

FAMILY AND CHILDREN'S POOLS - GYM - SPA- CHILDREN'S CLUB - HAMMOCK AREA - YOGA

AREA- ORGANIC ZEN BAR - COMMUNITY GROWTH GARDEN



## CENTRAL POOL



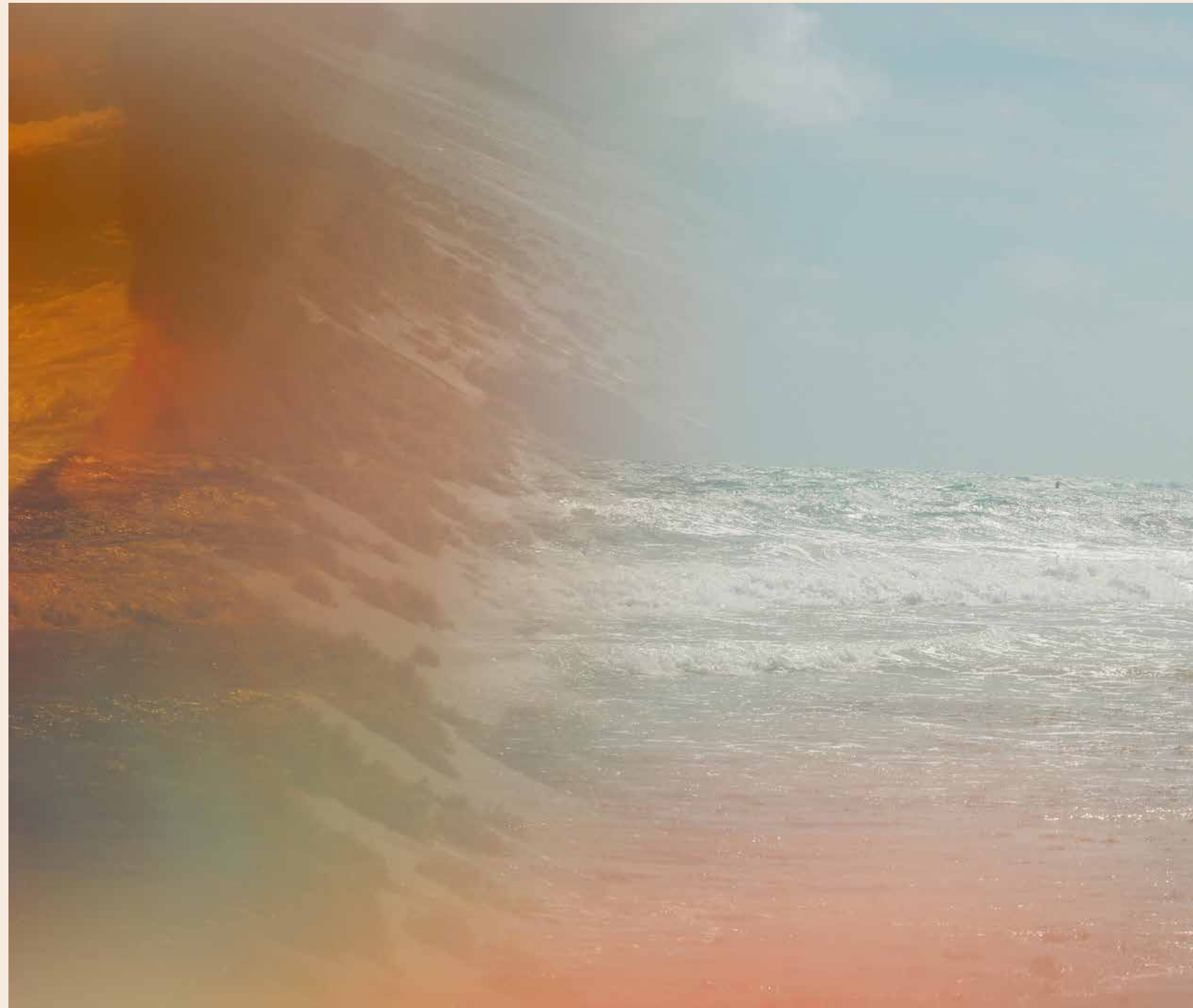
## YOGA AREA



## DINING ROOM







THE TURQUOISE SEA  
AT YOUR FEET



You live in the jungle, near legendary Cenotes,  
a few steps from unforgettable beaches that bathe their delicate  
sand with waters in turquoise tones.



Great Tulum is your gravitational center, a space that allows you to caress The sun, the moon and the stars.