



ALDEA SAVIA

Todas las imágenes contenidas en este folleto son con fines ilustrativos.
All artist's rendering for illustrative purposes only.



ALDEA SAVIA
TULUM



Tulum

Tulum is an impressive tourist destination located in the southeast coast of the Caribbean Sea in Mexico. It is a distinguished one among others in the world and so it allows inhabitants to live a unique experience for it is surrounded by natural landscapes, spectacular cenotes and an enjoyable place to make the most of life so peaceful that one can put down roots to this iconic site.

The vibes and energy that Tulum projects has renewed not a while ago due to the appearance of the latest gastronomic offers, emerging art, night life, and cultural scenes. ***And it is right in the center of all this atmosphere that Aldea Savia is located.***



Tulum

Holística

Zona Arqueológica
Achaaeological Site

Zona Hotelera
Hotel Zone

Mar Caribe
Caribbean Sea

Tulum's New Center

Aldea Savia is found in the heart of the urban development plan of Tulum, what makes this spot to live in Tulum insuperable, with all services at the reach of your hand, beautiful natural cenotes around it, a short distance from de shopping centers, archaeological landmarks and the marvelous coasts of the Mexican Caribbean Sea.



Homes joined to nature

The architectural design of Aldea Savia rings into focus the conservation of most indigenous trees from the region, giving as a result a good balance between nature and community.

The preservation of the environment is the starting point for each and every development stage of the project leading the make of terraces and roofs becoming fused with the green to give the sensation of natural landscaping in the middle of the Mayan jungle, to the point of natural areas, common spaces and paths of abundant vegetation within all the neighborhood.

Indigenous Trees

The native trees from the region that we have kept in Aldea Savia are: chechén, chacáh, tzalam, zapote, guaya, pich, ceiba, ramón, mahogany, and cedar.





Green Homes

*Todas las imágenes contenidas en este folleto son con fines ilustrativos.
All artist's rendering for illustrative purposes only.*



Balance between Nature and the Community

Aldea Savia is inspired in the community setting and its perfect balance with nature.





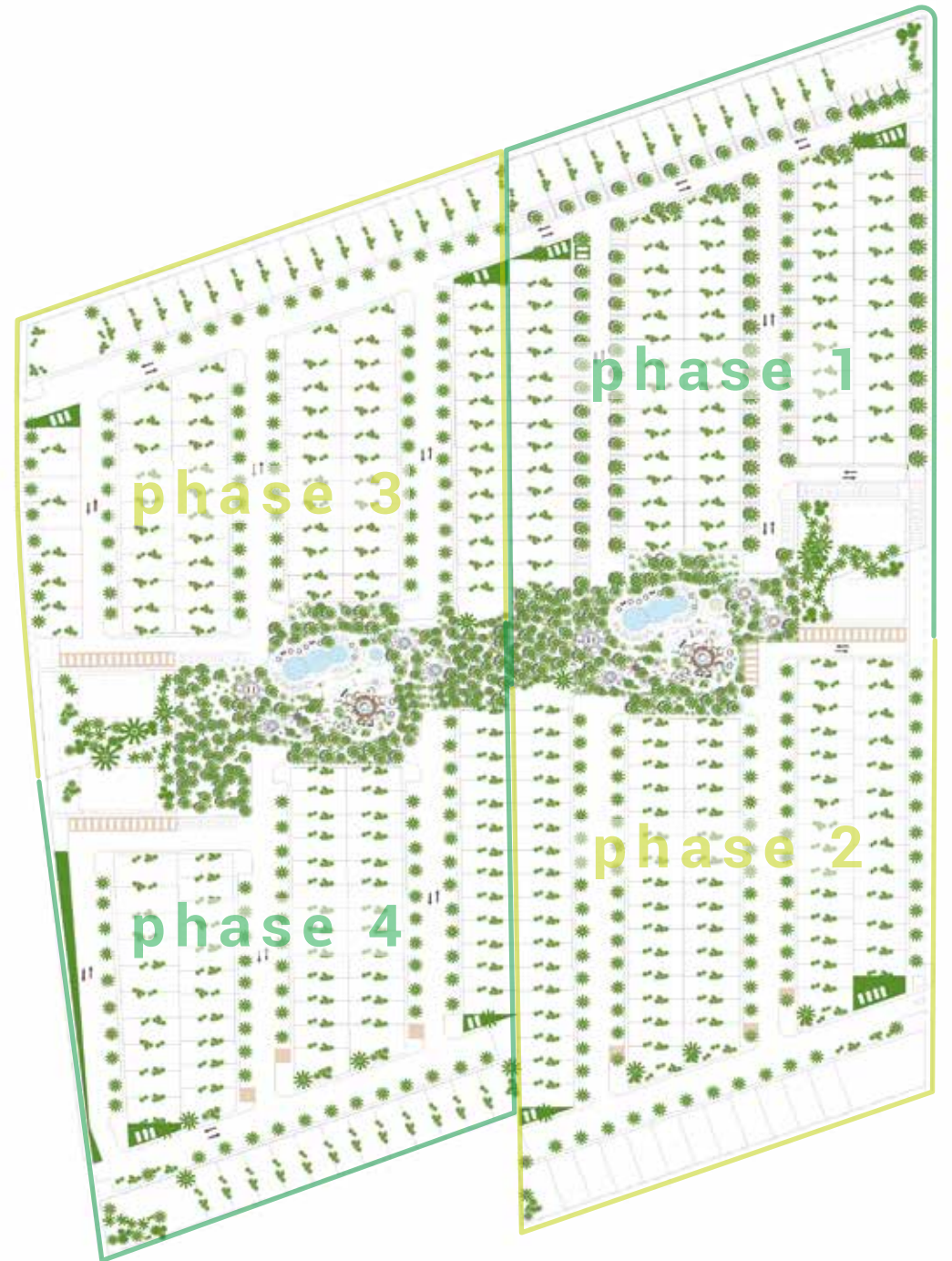
ALDEA SAVIA
TULUM

Aldea Savia is a new concept to lifestyle that offers a wide variety of things to do so that families put down roots, change and take advantage of natural surroundings of the Mayan jungle to enjoy.

The architectural draft offers green spaces allowing perfect air circulation, natural light to get inside, privacy and safety to each home.

We count on four different housing models, designed with resting and family gathering areas.

*Starting
a community*







Tipologies

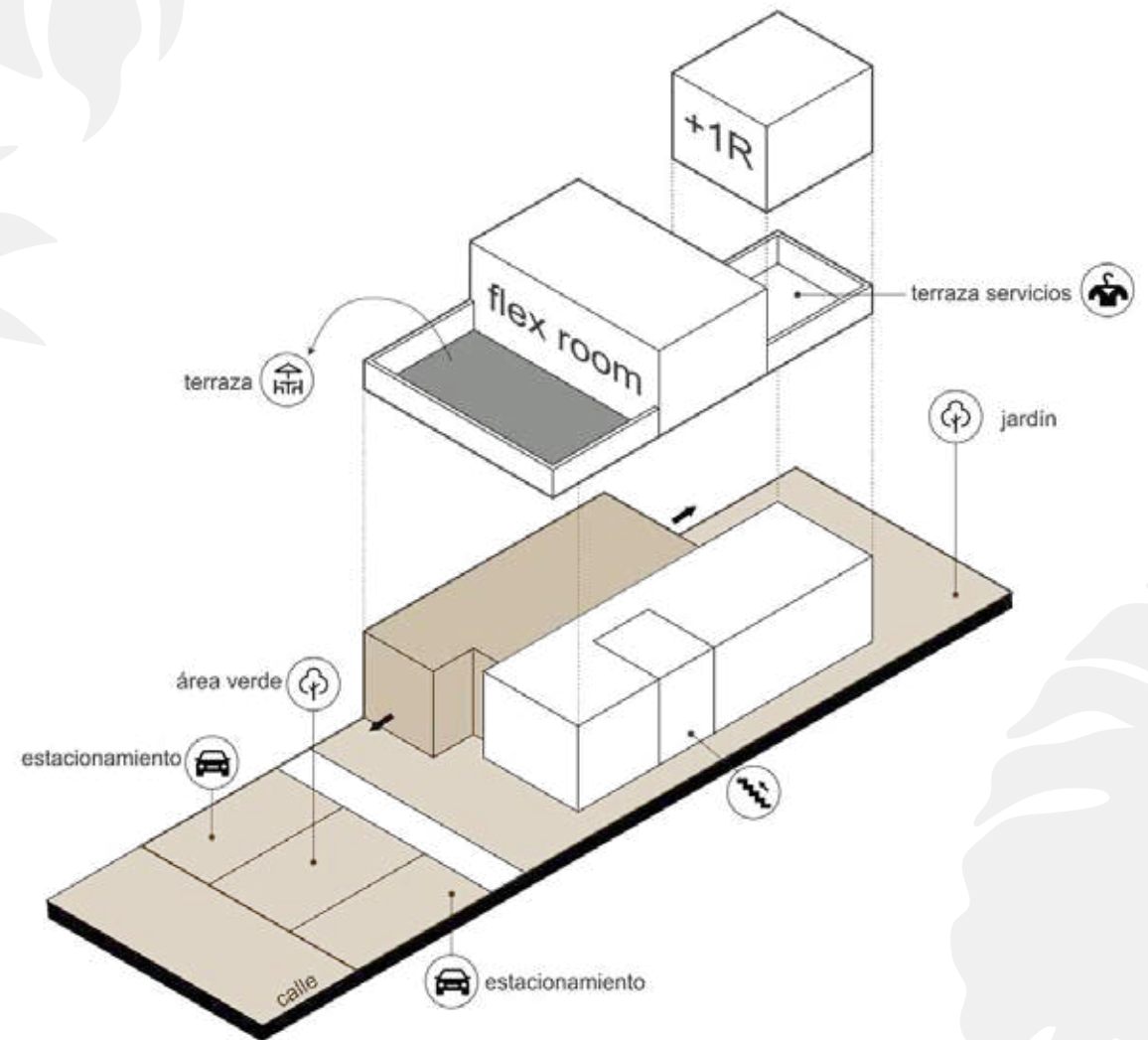
Three-room houses

Tailored and extendable house

+ Volumetry on the ground floor which includes social areas and two bedrooms.

+ Volumetry upstairs which includes the flex room, a tailored element for the user.

+ Extendable area for a fourth room.



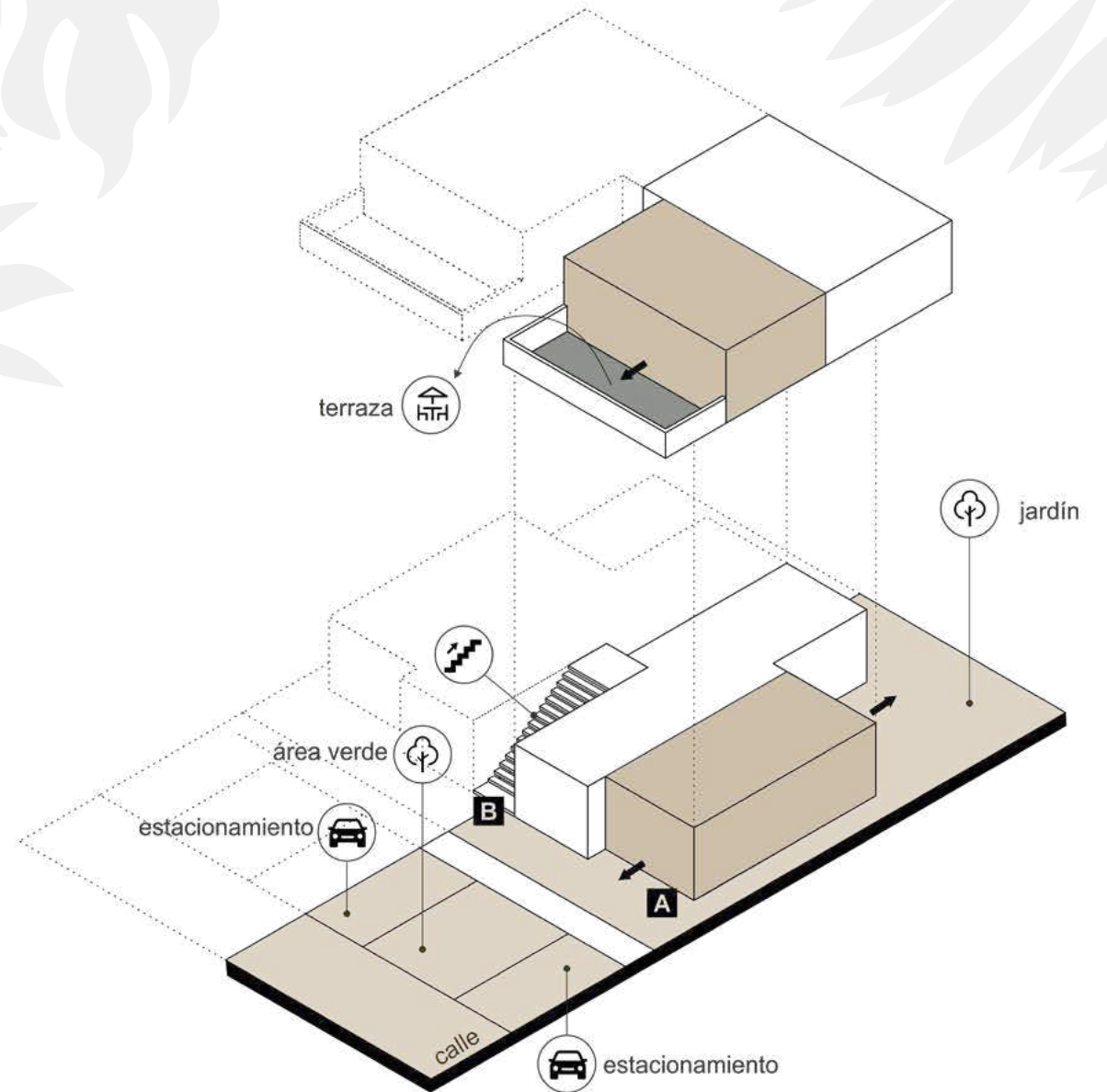


Todas las imágenes contenidas en este folleto son con fines ilustrativos.
All artist's rendering for illustrative purposes only.

Semi-detached House

Houses with separated entrances

- + House on the ground floor with social areas towards the street and garden.
- + House on the upper floor with social area towards the street through a terrace.
- + Semi-detached house reflecting between lots to create a common entrance.





*Todas las imágenes contenidas en este folleto son con fines ilustrativos.
All artist's rendering for illustrative purposes only.*

Department and Studio



*Todas las imágenes contenidas en este folleto son con fines ilustrativos.
All artist's rendering for illustrative purposes only.*



Natural Areas and Common Spaces

Both natural areas and common spaces together become a gathering place providing outdoor activities, shopping and entertainment centers where we assure your well-being and safety strengthening the concept of 'community'; a living place with distinction and soul, always in motion, where all neighbors know among them, participate and also take care of each other. This is the real energy (savina) which gives life to the project.

In the heart of the complex there is the common central area exclusively for owners and visitors and, to make it easier to enter from different points. There are spaces for the different activities which are connected by organic walkways allowing you to enjoy the rounds.

Amenities

Natural Areas and Common Spaces



Car park
for visitors



Bike
parking



Gym



Pets park



Playground



Running
track



Closed
community



Security
24/7



Break
zone



Wi-Fi
spot



Room for social
and leisure
activities



Boardgames
area



Spaces for private
gatherings
with palmroofs
Barbecues



Pool



Todas las imágenes contenidas en este folleto son con fines ilustrativos.
All artist's rendering for illustrative purposes only



*Todas las imágenes contenidas en este folleto son con fines ilustrativos.
All artist's rendering for illustrative purposes only.*

