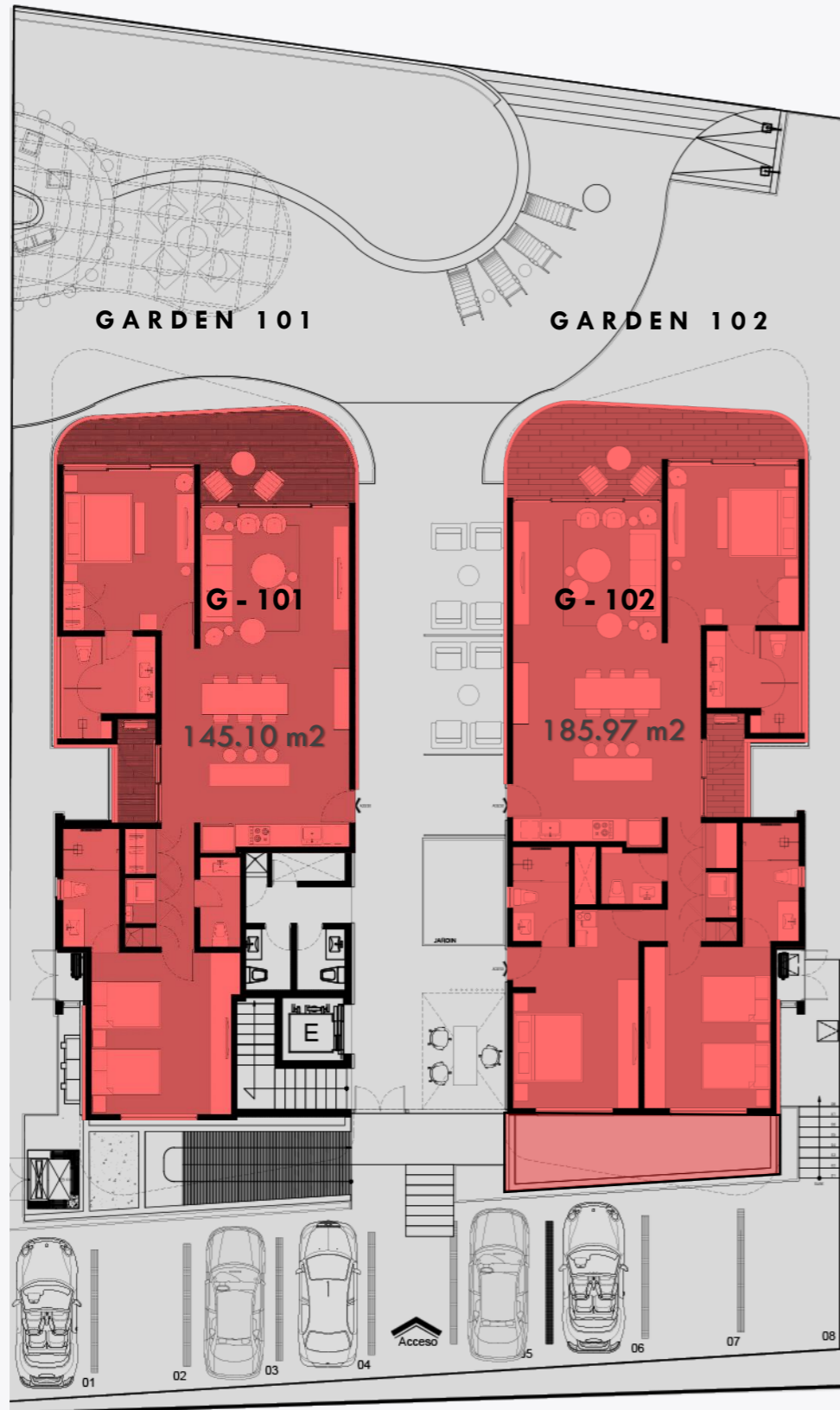


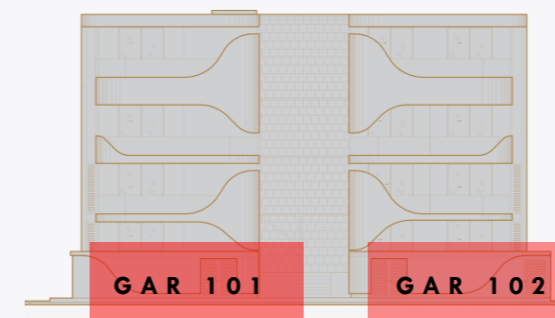
DEPARTAMENTOS
GARDEN TORRE 1 Y 2



PLANTA ARQUITECTÓNICA NIVEL 1

● DISPONIBLE ● RESERVADO ● VENDIDO

| CONDO | ÁREA | COSTO |
|---------|--|---------|
| G - 101 | 145.10 m ² (1,561.84 ft ²) | VENDIDO |
| G - 102 | 185.97 m ² (2,002.00 ft ²) | VENDIDO |



TORRE 1

ELEVACIÓN DE
REFERENCIA

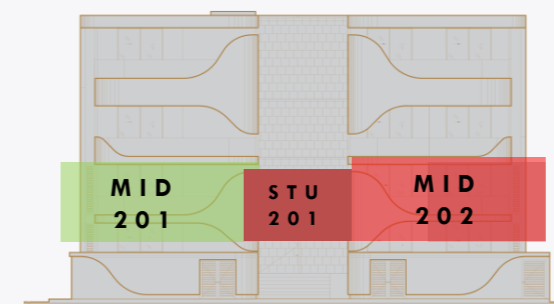
DEPARTAMENTOS MIDDLE Y ESTUDIOS



PLANTA ARQUITECTÓNICA NIVEL 2

● DISPONIBLE ● RESERVADO ● VENDIDO

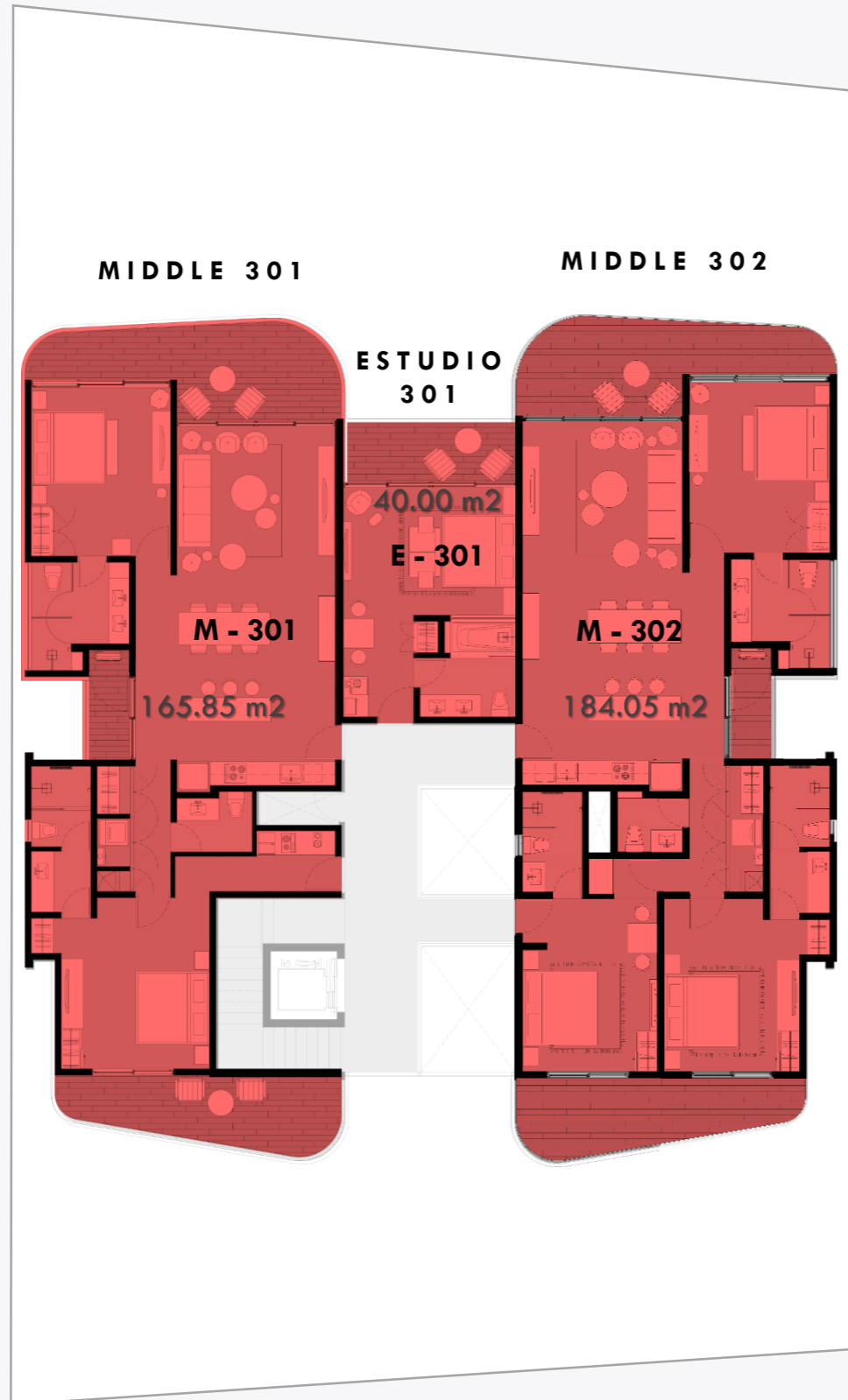
| CONDO | ÁREA | COSTO |
|---------|--|----------------------|
| M - 201 | 174.70 m ² (1,880.46 ft ²) | \$ 1,400,000.00 DLLS |
| M - 202 | 192.86 m ² (2,077.00 ft ²) | VENDIDO |
| E - 201 | 40.00 m ² (430.55 ft ²) | VENDIDO |



TORRE 1

ELEVACIÓN DE
REFERENCIA

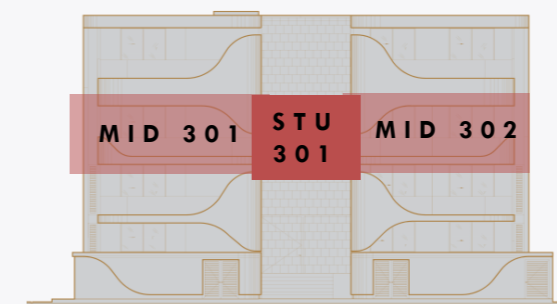
DEPARTAMENTOS MIDDLE Y ESTUDIOS



PLANTA ARQUITECTÓNICA NIVEL 3

● DISPONIBLE ● RESERVADO ● VENDIDO

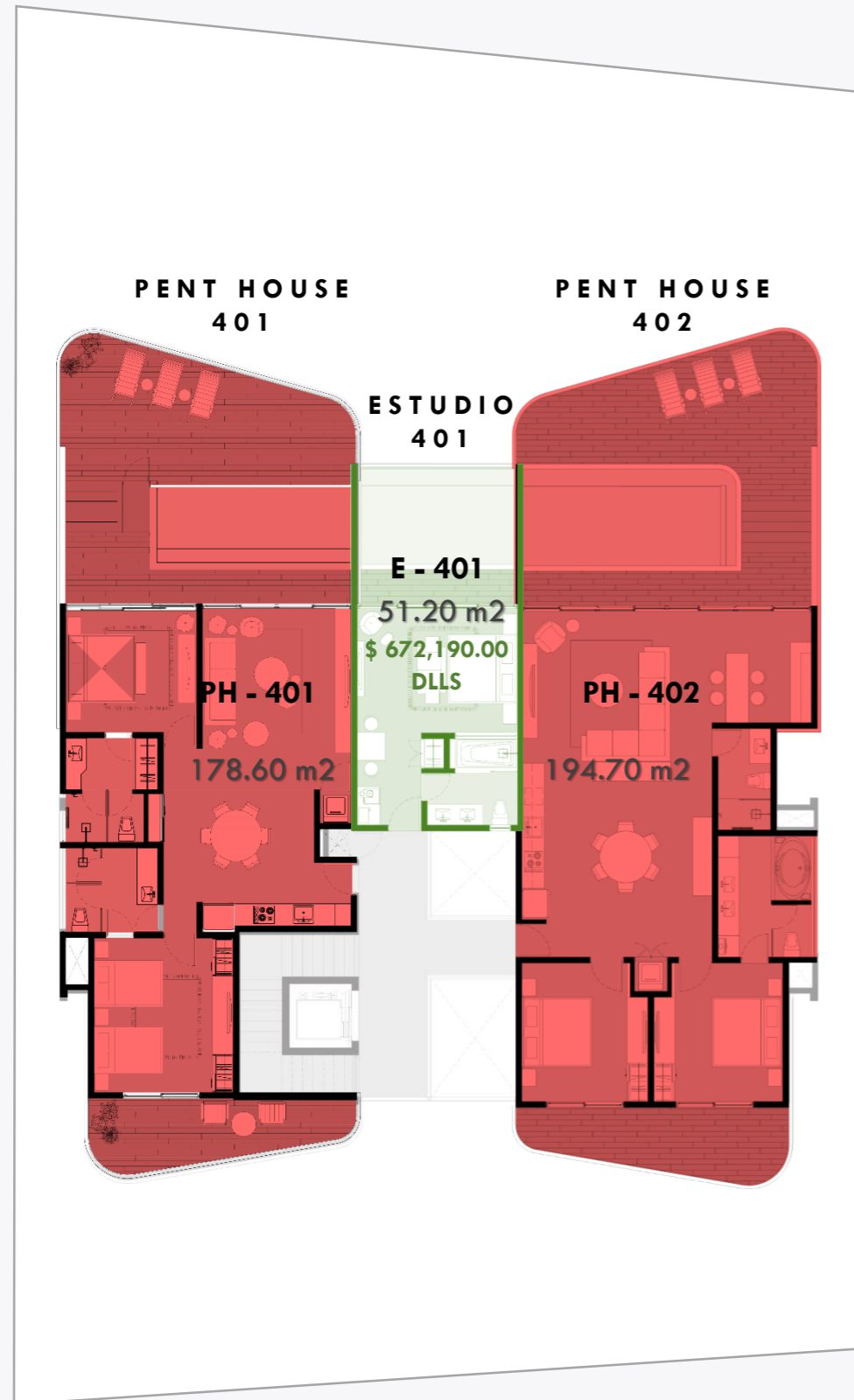
| CONDO | ÁREA | COSTO |
|---------|-----------------------------|---------|
| M - 301 | 165.85 m2 (1,785.19 ft2) | VENDIDO |
| M - 302 | 184.05 m2 (1,981.10 ft2) | VENDIDO |
| E - 301 | 40.00 m2 (430.55 ft2) | VENDIDO |



TORRE 1

ELEVACIÓN DE
REFERENCIA

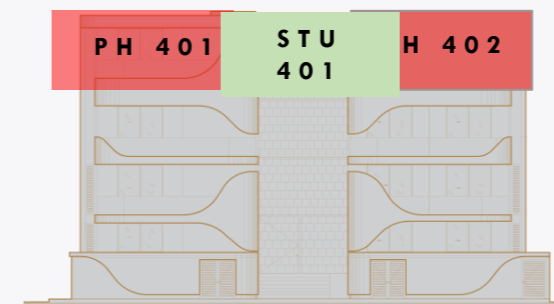
DEPARTAMENTOS PENT HOUSES Y ESTUDIO



PLANTA ARQUITECTÓNICA NIVEL 4

● DISPONIBLE ● RESERVADO ● VENDIDO

| CONDO | ÁREA | COSTO |
|----------|-----------------------------|--------------------|
| PH - 401 | 178.60 m2 (1,922.43 ft2) | VENDIDO |
| PH - 402 | 194.70 m2 (2,095.73 ft2) | VENDIDO |
| E - 401 | 51.20 m2 (551.11 ft2) | \$ 672,190.00 DLLS |



TORRE 1

ELEVACIÓN DE
REFERENCIA