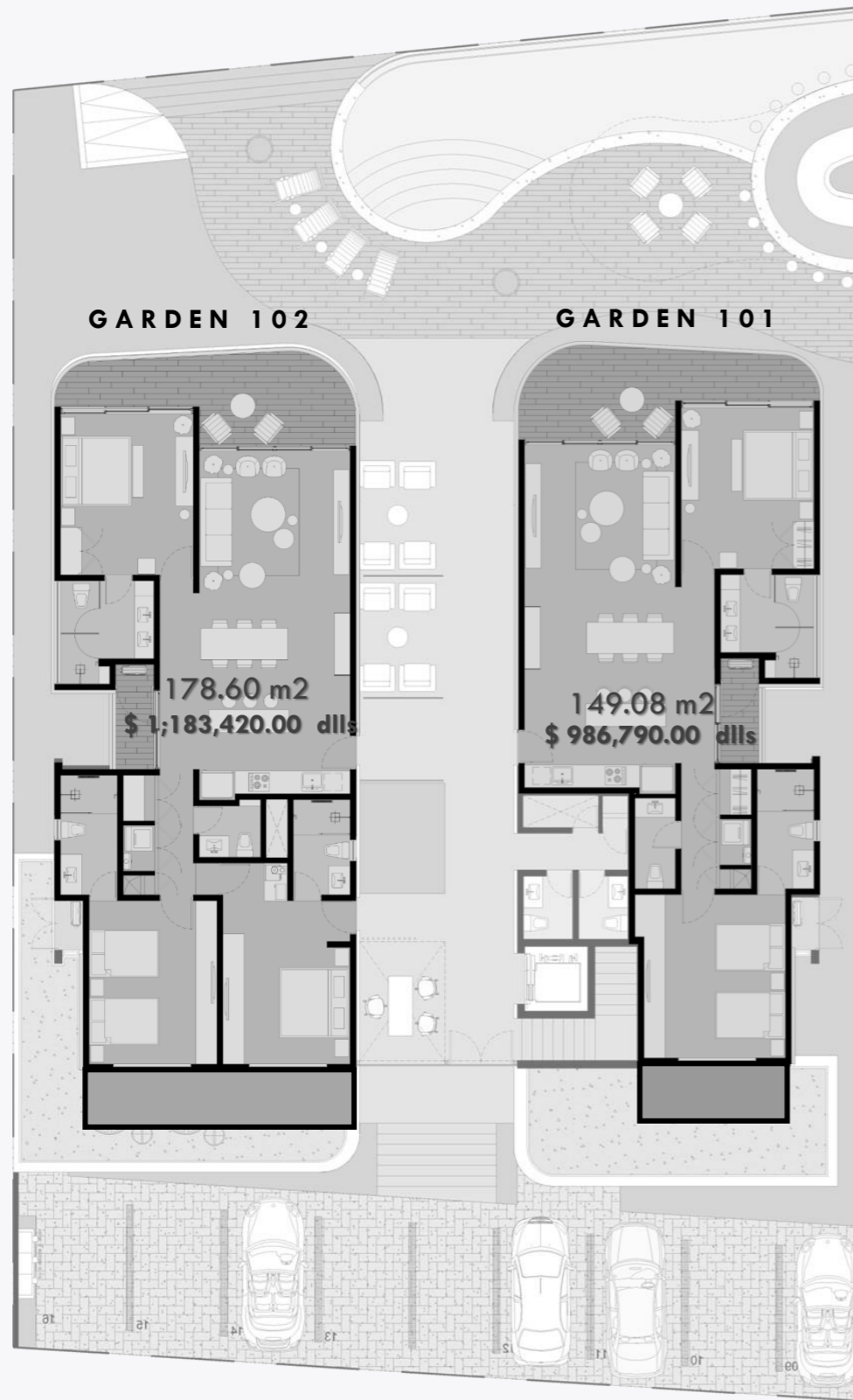


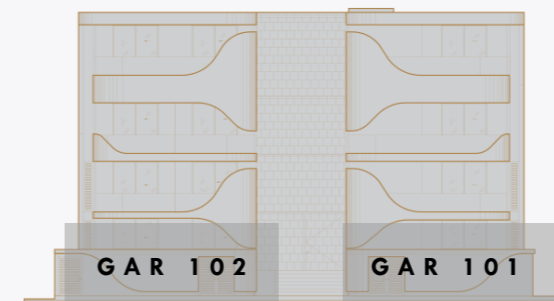
DEPARTAMENTOS
GARDEN TORRE 1 Y 2



PLANTA ARQUITECTÓNICA NIVEL 1

● DISPONIBLE ● RESERVADO ● VENDIDO

| CONDO | ÁREA | COSTO |
|------------|--------------------------|---------------------|
| Garden 101 | 149.08 m2 / 1,604.68 ft2 | \$ 986,790.00 dls |
| Garden 102 | 178.60 m2 / 1,922.43 ft2 | \$ 1,183,420.00 dls |



TORRE 2

ELEVACIÓN DE REFERENCIA

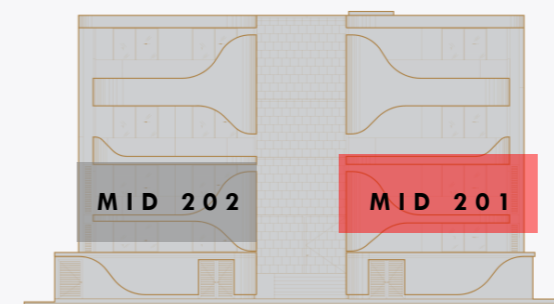
DEPARTAMENTOS MIDDLE Y ESTUDIOS



PLANTA ARQUITECTÓNICA NIVEL 2

● DISPONIBLE ● RESERVADO ● VENDIDO

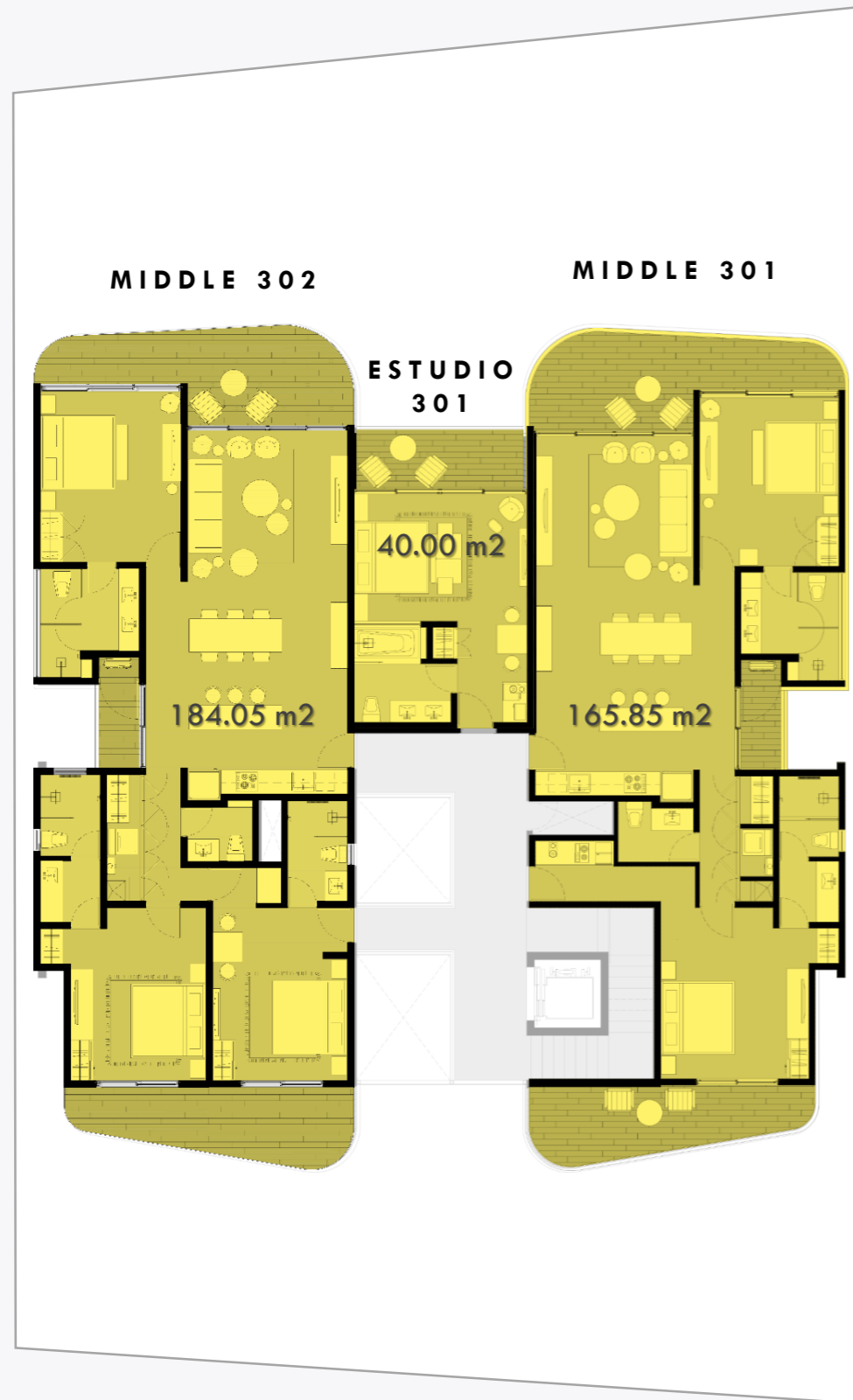
| CONDO | ÁREA | COSTO |
|-------------|--|----------------------|
| Middle 201 | 174.70 m ² / 1,880.46 ft ² | |
| Middle 202 | 192.96 m ² / 1,000.61 ft ² | \$ 1,309,590.00 dlls |
| Estudio 201 | 40.00 m ² / 430.55 ft ² | |



TORRE 2

ELEVACIÓN DE
REFERENCIA

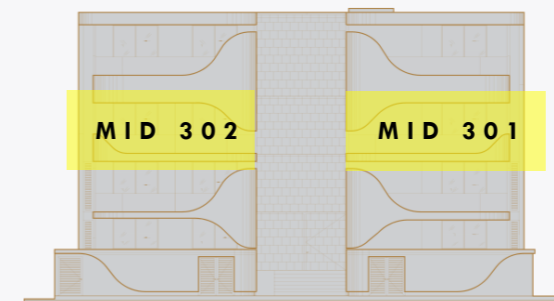
DEPARTAMENTOS MIDDLE Y ESTUDIOS



PLANTA ARQUITECTÓNICA NIVEL 3

DISPONIBLE
 RESERVADO
 VENDIDO

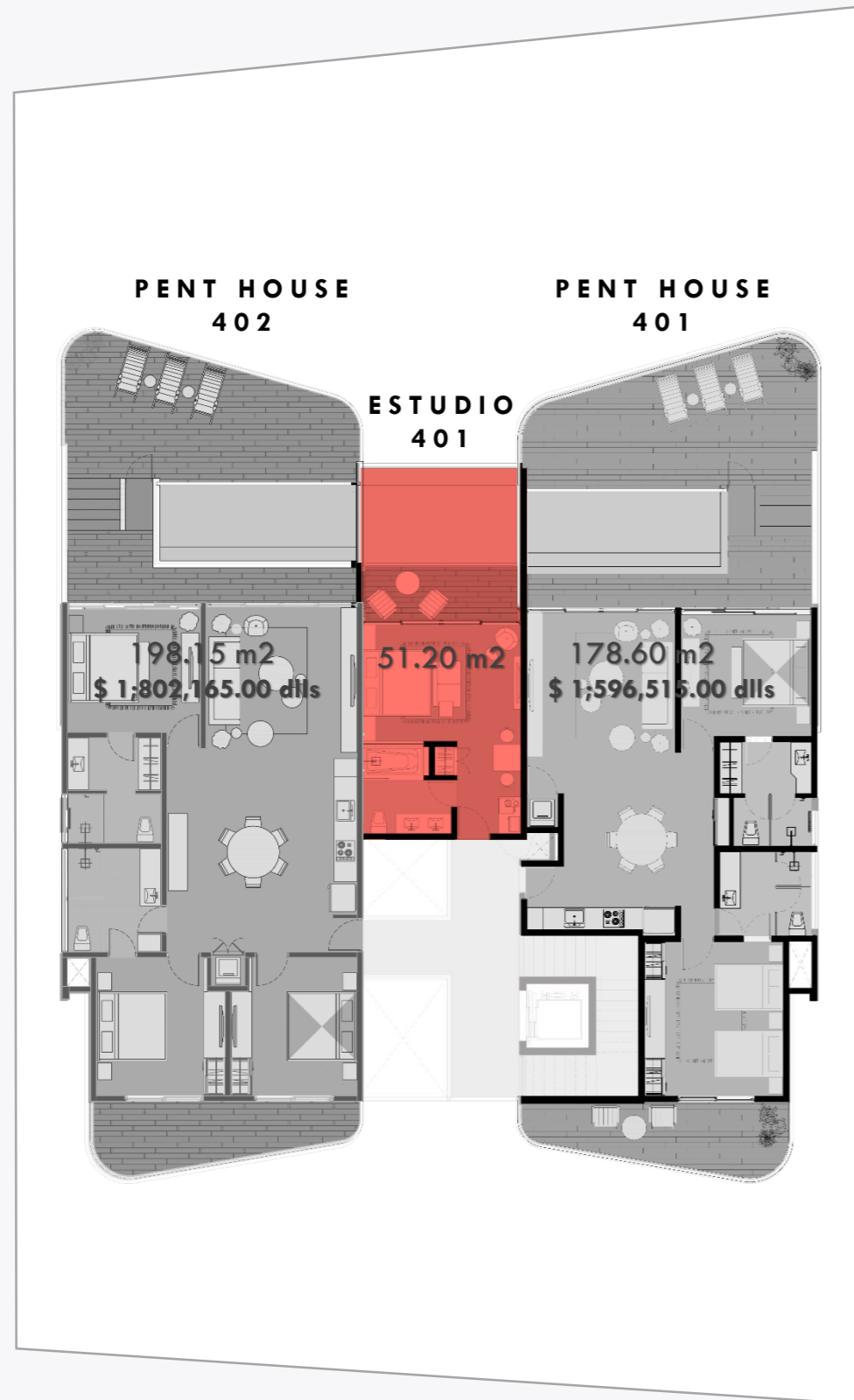
| CONDO | ÁREA | COSTO |
|-------------|--------------------------|-------|
| Middle 301 | 165.85 m2 / 1,785.19 ft2 | |
| Middle 302 | 184.05 m2 / 1,981.10 ft2 | |
| Estudio 301 | 40.00 m2 / 430.55 ft2 | |



TORRE 2

ELEVACIÓN DE
REFERENCIA

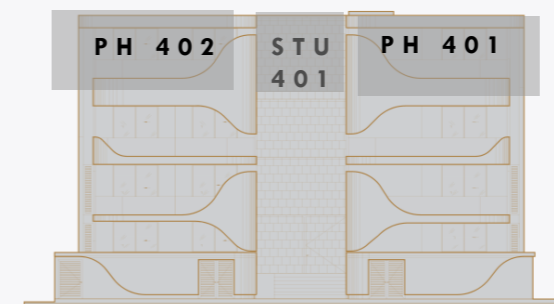
DEPARTAMENTOS PENT HOUSES Y ESTUDIO



PLANTA ARQUITECTÓNICA NIVEL 4

DISPONIBLE
 RESERVADO
 VENDIDO

| CONDO | ÁREA | COSTO |
|--------------------|------------------------------|---------------------|
| Pent House 401 | 178.60 m2 / 1,922.43 ft2 | \$1,596,515.00 dls |
| Pent House 402 | 198.15 m2 / 2,132.76 ft2 | \$ 1,802,165.00 dls |
| Estudio 401 | 51.20 m2 / 551.11 ft2 | |



TORRE 2

ELEVACIÓN DE
REFERENCIA