



MISTIQ
TEMPLE

An aerial photograph of a circular luxury resort development nestled in a dense tropical jungle. The resort is designed in a three-temple building style, featuring a central circular pool area surrounded by a ring of smaller pools and lounge areas. The architecture is inspired by ancient Mayan design, with terraces and walkways. The surrounding forest is lush and green, providing a natural backdrop for the resort.

TULUM, LIKE YOU NEVER IMAGINED

Witness the first luxury development designed in a three-temple building, inspired in the imposing ancient mayan architecture.

An aerial photograph of a modern resort development nestled in a dense, lush green jungle. The resort features several multi-story buildings with light-colored facades and extensive use of wood. Each building has a swimming pool on its rooftop terrace, and the pools are surrounded by lounge chairs and umbrellas. The buildings are interconnected by a network of walkways and stairs. The overall atmosphere is one of contemporary luxury integrated with nature. The text 'THREE-TEMPLE DEVELOPMENT' is overlaid in large, white, bold letters on the left side of the image.

THREE-TEMPLE DEVELOPMENT

Each of the residences represent an authentic sanctuary where contemporary luxury meets the Tulum's eco-chic atmosphere.

DELIGHT IN DESIGN AND COMFORT

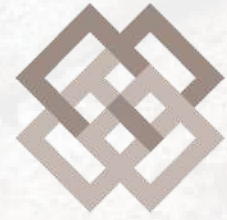
MISTIQ Temple arises from the central idea that careful stewardship of the environment can be compatible with comfort and elegance.





CENTRAL POOL & SOLARIUM

DEVELOPER



MISTIQ
TULUM

MISTIQ Tulum is the leading developer in the luxury residential market in Tulum and Riviera Maya. The consolidation of its first project MISTIQ Tulum, positions the company as one of the most solid and safe to invest in Mexico & Latin America.





**OWNER
PRIVILEGES**



MISTIQ Temple offers a pleasantly surprising level of premium amenities:

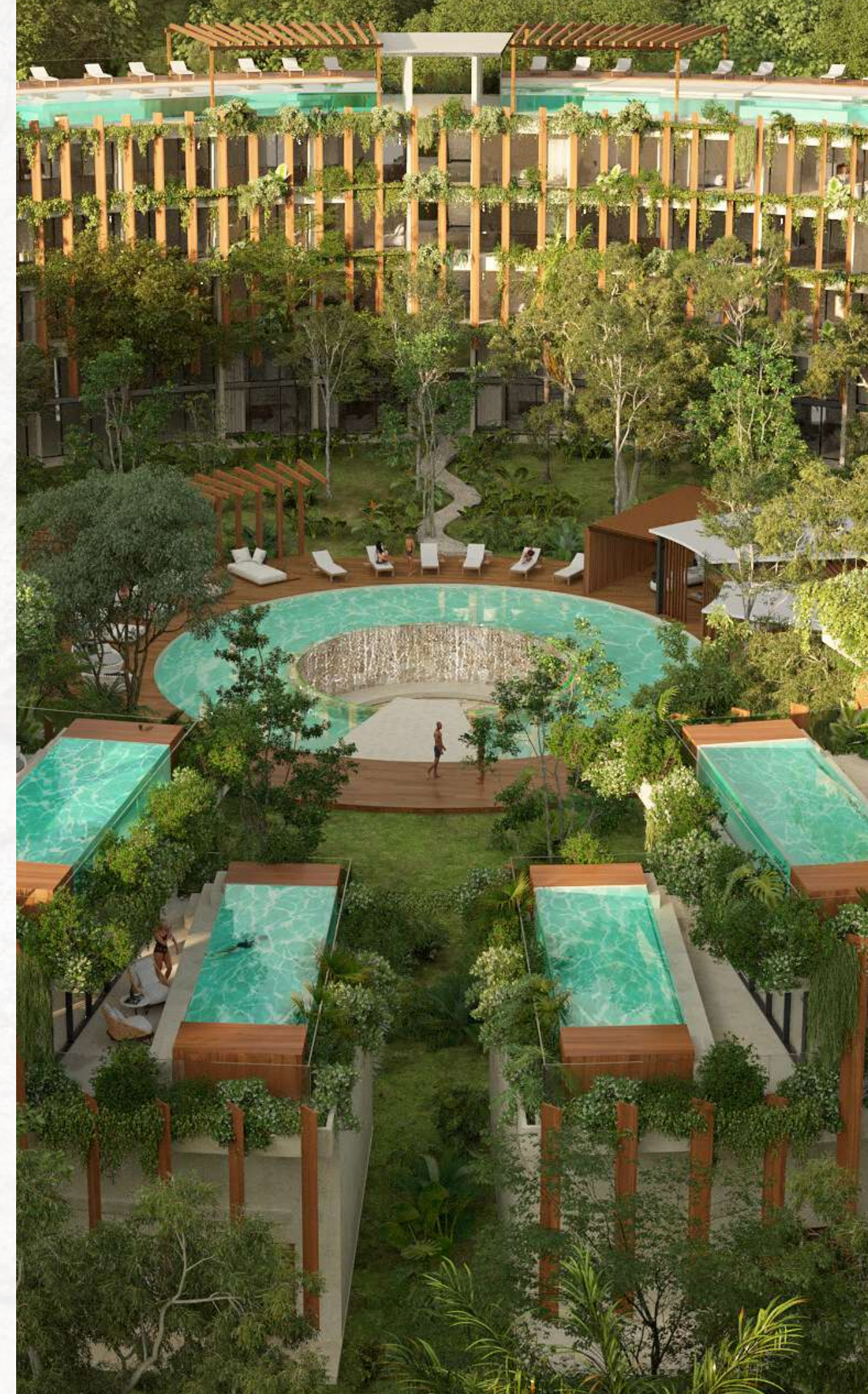
- 6 Roof Infinity Pools
- 1 Central Pool
- 1 Cenote Pool
- Lounge Area
- Solarium
- Bar
- Gym
- 3,000 m² of elegant gardens
- 24/7 Reception
- 3 Elevators
- Parking Lots
- Private Beach Club



PANORAMIC VIEW

HIGH-END DEVELOPMENT

MISTIQ Temple is the first condo where environmental quality is not a luxury item. The Project includes 4,500 m² of elegant gardens, 6 Infinity Pools, a State-Of-The-Art Gym, a central common area with Solarium, Bar, Lounge and other Amenities where condo owners may resolve all their needs without having to leave the compound.





LIVING IN TULUM'S GREATEST TEMPLE

MISTIQ Temple luxury residences are an unequivocal invitation to delight in architecture and design. All the 104 units include living, spacious dining rooms full wide windows, kitchen and delightful terraces to contemplate the marvelous garden views. Some units offer a gorgeous private swimming pool.



ONE BED LOFT



MISTIQ Temple is located just 1 kilometer from the beaches of Tulum, considered the most beautiful in the Caribbean in recent years.



PANORAMIC VIEW

The background is a dark, monochromatic image with a complex, cracked texture. The cracks are irregular and form a network of interconnected lines, creating a pattern that resembles parched soil or weathered stone. The lighting is subtle, highlighting the ridges and shadows of the cracks, giving the surface a three-dimensional appearance. The overall color palette is a range of dark greys and blacks.

THE RESIDENCES

LOFT



Bedroom 1 / Bathrooms 1 / Interior 62.42 m²
Terrace 5.05 m² / Area 67.47 m²

LOFT PLUS



Bedroom 1 / Bathrooms 1 / Interior 84.80 m²
Terrace 6.95 m² / Area 91.75 m²



STUDIO



Bedroom 1 / Bathrooms 1 / Interior 39.82 m²
Terrace 5.20 m² / Area 45.02 m²

ONE BED



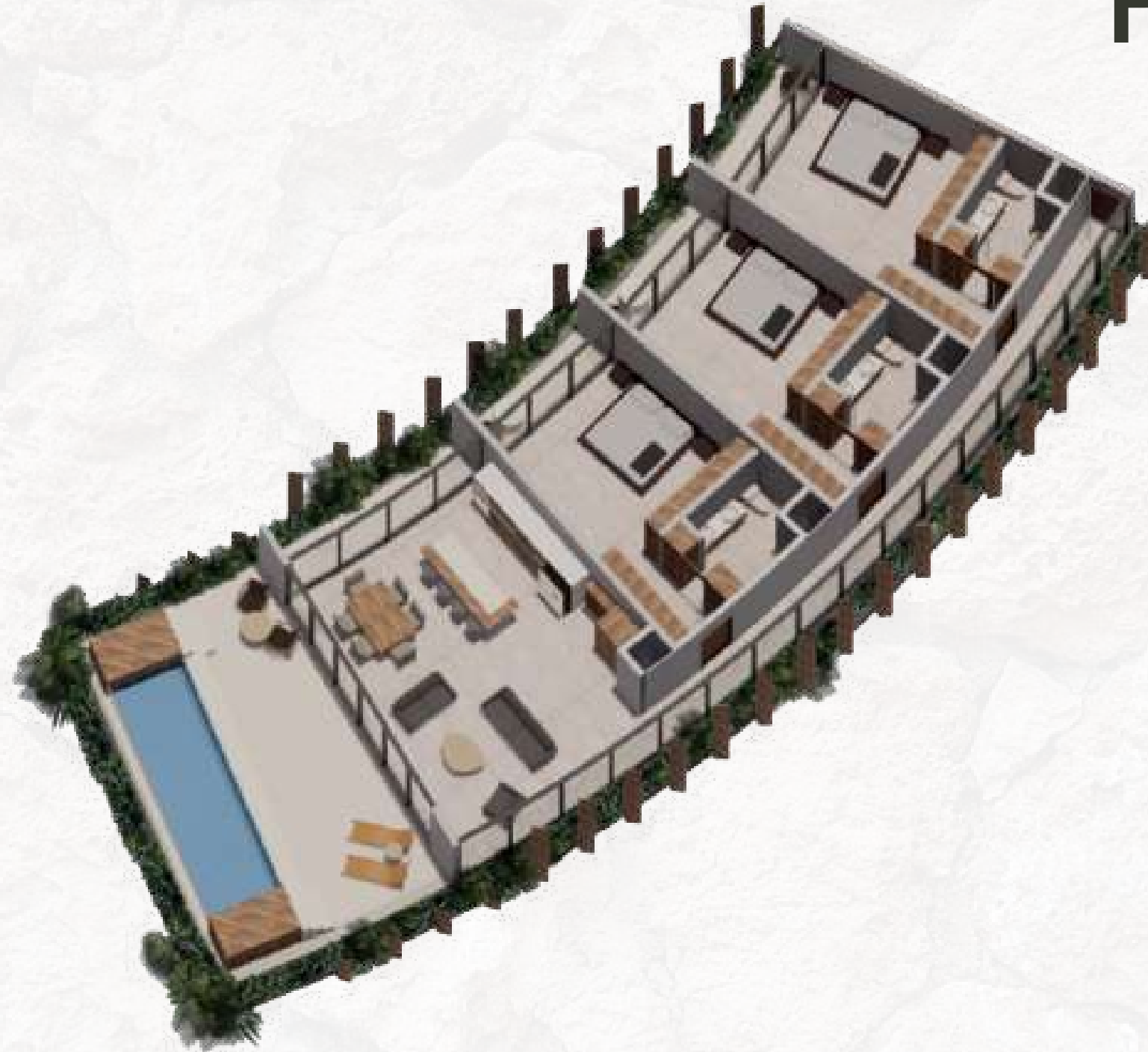
Bedroom 1 / Bathrooms 1 / Interior 68.00 m²
Terrace 52.00 m² / Area 120.00 m²

TWO BED



Bedroom 2 / Bathrooms 2 / Interior 165.64 m²
Terrace 75.15 m² / Area 240.79. m²

PENT HOUSE



Bedroom 3 / Bathrooms 3 / Interior 211.70 m²
Terrace 82.55. m² / Area 294.25 m²



LOFT PLUS

WE MAXIMIZE THE VALUE OF YOUR INVESTMENT

MISTIQ Vacation Rental Program will make your luxury residence able to generate significant income throughout the year, taking advantage of our occupancy rates above 70%. Being one of the most avant-garde in the current market, the MISTIQ Rental Software will make it easier for your unit to attract up to 43% more bookings than other Condominiums.

