

NAJ KIIN 



From its meaning in Spanish, “**Casa del sol**”, **Naj Kiin** pays homage to the mystical Mayan architecture. The orthogonal forms and symmetry remind us of the pyramids, one of the most characteristic symbols of this area and its civilization.

From the fusion between ancient **Tulum** with the contemporary lifestyle, **Naj Kiin** was born. A project that mixes traditional materials, such as wood and stone with modern touches of steel and glass. Therefore the exclusivity of its architecture. That will make you feel a unique connection with nature and yourself.





Naj Kiin is located in **Aldea Záma**, one of the most exclusive areas in Tulum, that defines modern life in the **Riviera Maya**, fusionating the ancient and the mysticism of **Tulum**.

This Majestic residential project is located in a central area which makes it possible to enjoy cycling tours to archaeological sites, hotels, the beach, **the little town of Tulum and the cenotes**.











This project of 16 apartments pays particular attention to aesthetics even in the smallest details, mixing materials such as stone and wood with prefabricated, elements such as steel, **creating a modern and cozy space.**







FLOOR PLANS 1-12

ALL HAVE:

- LIVING ROOM / DINNING ROOM
- MAIN BEDROOM WITH DRESSING ROOM, OWN BATHROOM AND PRIVATE TERRACE OR BALCONY
- SECONDARY BEDROOM WITH CLOSET
- BATHROOM THAT SERVES THE ENTIRE PLANT
- LAUNDRY ROOM
- GENERAL TERRACE
- CELLAR

DEPARTMENT 1 AND 6



167 TOTAL METERS (108 INTERIOR,
27 TERRACES, 26 GARDEN Y 6 OF CELLAR)

DEPARTMENT 2 AND 5



208 TOTAL METERS (110 INTERIOR,
24 TERRACES, 65 GARDEN Y 6 OF CELLAR)

DEPARTMENT 3 AND 4



135 TOTAL METERS
(94 INTERIOR, 13 TERRACES,
25 GARDEN Y 3 OF CELLAR)

DEPARTMENT 7 AND 12



138 TOTAL METERS
(108 INTERIOR, 27 TERRACES
Y 3 OF CELLAR)

DEPARTMENT 9 AND 10



110 TOTAL METERS (94 INTERIOR,
13 TERRACES Y 3 OF CELLAR)

DEPARTMENT 8 AND 11



137 TOTAL METERS (110 INTERIOR,
24 TERRACES Y 3 OF CELLAR)

PENTHOUSE 1 AND 4

ALL HAVE:

- LIVING ROOM / DINNING ROOM
- KITCHEN
- BATHROOM (FULL)
- MAIN BEDROOM WITH DRESSING ROOM, OWN BATHROOM AND PRIVATE TERRACE OR BALCONY.
- SECONDARY BEDROOM WITH CLOSET, BATHROOM AND PRIVATE TERRACE.
- SECONDARY BEDROOM WITH CLOSET AND BATHROOM (FULL) THAT SERVES THE -ENTIRE PLANT
- LAUNDRY ROOM
- GENERAL TERRACE WITH JACUZZI
- ROOFTOP
- CELLAR



303 TOTAL METERS (140 INTERIOR, 65 TERRACES 79 ROOFTOP,
10 ROOFED ROOFTOP AND 9 OF CELLAR)



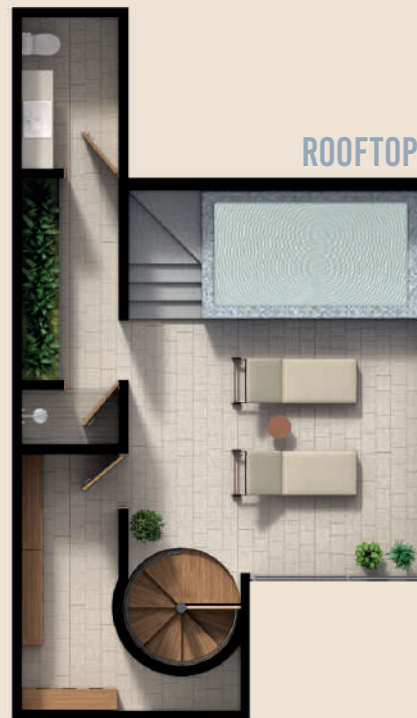




PENTHOUSE 2 AND 3

ALL HAVE:

- LIVING ROOM / DINNING ROOM
 - KITCHEN
 - MAIN BEDROOM WITH DRESSING ROOM, OWN BATHROOM AND PRIVATE TERRACE OR BALCONY.
 - SECONDARY BEDROOM WITH CLOSET, OWN BATHROOM.
 - SECONDARY BEDROOM WITH CLOSET AND BATHROOM (FULL) THAT SERVES THE ENTIRE PLANT
 - LAUNDRY ROOM
 - GENERAL TERRACE WITH JACUZZI
 - ROOFTOP
 - CELLAR
- 



ROOFTOP:

230.5 TOTAL METERS (163 INTERIOR, 18 DE TERRACES,
31 ROOFTOP, 11 ROOFED ROOFTOP AND 7.5 OF CELLAR)





