

DISTRITO  MORELOS

beach homes

Say hello to your new neighbor, the sea.

The pristine beach will be the scenery of every moment in your life. Period. We took the best of both worlds and created a space to suit the comforts of modern living in one of the most beautiful landscapes in the world.

Distrito Morelos is a new beachfront apartment complex in Puerto Morelos, a colorful charming town in the Riviera Maya. Let the sea breeze surround your atmosphere and the sound of the waves harmonize your days.

This is your new home, right where you always wanted.



The closer to the
beach, the better.

30 apartments
1 to 4 bedrooms
10-story building

Parking
Security 24/7
Security booth
Lobby
Gym

Pool
Bar / Grill Area
Jacuzzi
Solarium
Snack Bar
Beachfront



*a place with
a view for life,
your life*

AEROPUERTO
INTERNACIONAL
CANCÚN

PUNTA
NIZUC

LA ISLA

PUERTO
MORELOS

RUTA DE LOS CENOTES

CARRETERA CANCÚN-TULUM



Wake up
and sea.

In the best view,
surrounding &
location.



Mar Caribe

GROUND FLOOR

GYM / BATHROOMS

LOBBY / ADMINISTRATION

PARKING

ELEVATOR / STAIRCASE

POOL / JACUZZI

SOLARIUM / SNACK BAR

PALAPA GRILL / BEACH







FIRST LEVEL

APT 101: 140.44 M²

3 BEDROOMS, 3 FULL BATHROOMS,
LIVING AND DINING ROOM, KITCHEN, LAUNDRY.

APT 102: 80.54 M²

2 BEDROOMS, 2 FULL BATHROOMS, LIVING
AND DINING ROOM, KITCHEN, LAUNDRY.

APT 103: 69.64 M²

2 BEDROOMS, 1 FULL BATHROOM, LIVING
AND DINING ROOM, KITCHEN, LAUNDRY.

APT 104: 61.11 M²

1 BEDROOM, 1 FULL BATHROOM, LIVING
AND DINING ROOM, KITCHEN, LAUNDRY.



DISTRITO  MORELOS

peach homes



SECOND LEVEL

APT 201: 124.93 M2

3 BEDROOMS, 3 FULL BATHROOMS,
LIVING AND DINING ROOM, KITCHEN, LAUN

APT 202: 80.54 M2

2 BEDROOMS, 2 FULL BATHROOMS, LIVING
AND DINING ROOM, KITCHEN, LAUNDRY.

APT 203: 63.24 M2

2 BEDROOMS, 1 FULL BATHROOM, LIVING
AND DINING ROOM, KITCHEN, LAUNDRY.

APT 204: 61.11 M2

1 BEDROOM, 1 FULL BATHROOM, LIVING
AND DINING ROOM, KITCHEN, LAUNDRY.



DISTRITO  MORELOS

peach homes

THIRD LEVEL

APT 301: 148.98 M2

3 BEDROOMS, 3 FULL BATHROOMS,
LIVING AND DINING ROOM, KITCHEN, LAUNDRY.

APT 302: 89.44 M2

2 BEDROOMS, 2 FULL BATHROOMS, LIVING
AND DINING ROOM, KITCHEN, LAUNDRY.

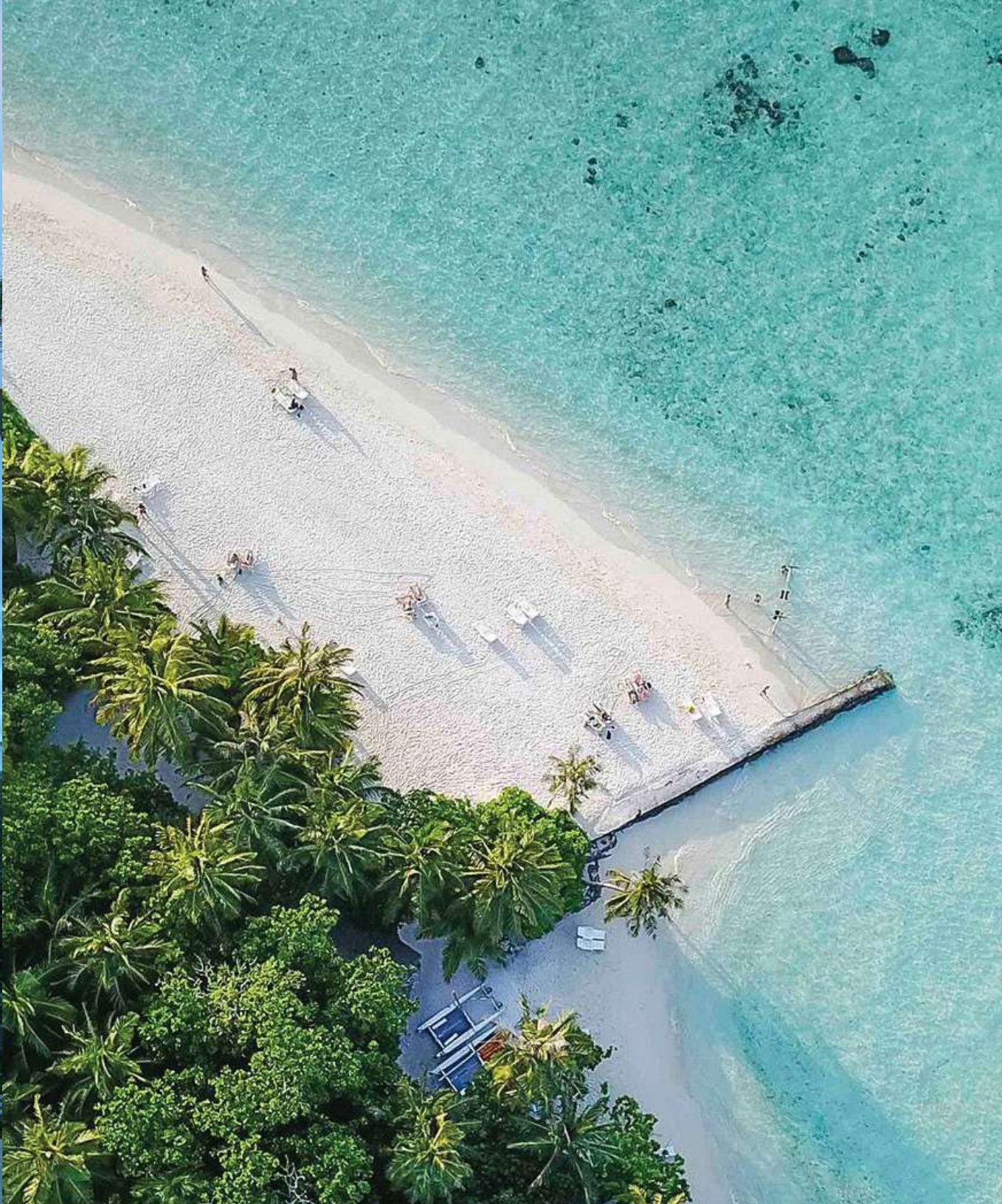
APT 303: 69.64 M2

2 BEDROOMS, 1 FULL BATHROOM, LIVING
AND DINING ROOM, KITCHEN, LAUNDRY.

APT 304: 69.84 M2

1 BEDROOM, 1 FULL BATHROOM, LIVING
AND DINING ROOM, KITCHEN, LAUNDRY.







*beach all day,
everyday*

FOURTH LEVEL

APT 401: 136.26 M2

3 BEDROOMS, 3 FULL BATHROOMS,
LIVING AND DINING ROOM, KITCHEN, LAUNDRY

DEPTO 402: 93.05 M2

2 BEDROOMS, 2 FULL BATHROOMS, LIVING
AND DINING ROOM, KITCHEN, LAUNDRY.

DEPTO 403: 80.33 M2

2 BEDROOMS, 1 FULL BATHROOM, LIVING
AND DINING ROOM, KITCHEN, LAUNDRY.

DEPTO 404: 61.11 M2

1 BEDROOM, 1 FULL BATHROOM, LIVING
AND DINING ROOM, KITCHEN, LAUNDRY.



FIFTH LEVEL

APT 501: 136.26 M2

3 BEDROOMS, 3 FULL BATHROOMS,
LIVING AND DINING ROOM, KITCHEN, LAUNDRY.

APT 502: 93.05 M2

2 BEDROOMS, 2 FULL BATHROOMS, LIVING
AND DINING ROOM, KITCHEN, LAUNDRY.

APT 503: 143.20 M2

3 BEDROOMS, 3 FULL BATHROOMS,
LIVING AND DINING ROOM, KITCHEN, LAUNDRY.



DISTRITO  MORELOS

peach homes

SIXTH LEVEL

APT 601: 148.98 M2

3 BEDROOMS, 3 FULL BATHROOMS,
LIVING AND DINING ROOM, KITCHEN, LAUNDRY.

APT 602: 89.94 M2

2 BEDROOMS, 2 FULL BATHROOMS, LIVING
AND DINING ROOM, KITCHEN, LAUNDRY.

APT 603: 142.01 M2

3 BEDROOMS, 3 FULL BATHROOMS,
LIVING AND DINING ROOM, KITCHEN, LAUNDRY.



*home is where
the best view is*



SEVENTH LEVEL

APT 701: 136.26 M2

3 BEDROOMS, 3 FULL BATHROOMS,
LIVING AND DINING ROOM, KITCHEN, LAUNDRY.

APT 702: 93.05 M2

2 BEDROOMS, 2 FULL BATHROOMS, LIVING
AND DINING ROOM, KITCHEN, LAUNDRY.

APT 703: 143.20 M2

3 BEDROOMS, 3 FULL BATHROOMS,
LIVING AND DINING ROOM, KITCHEN, LAUNDRY.



EIGHTH LEVEL

APT 801: 148.98 M2

3 BEDROOMS, 3 FULL BATHROOMS,
LIVING AND DINING ROOM, KITCHEN, LAUNDRY.

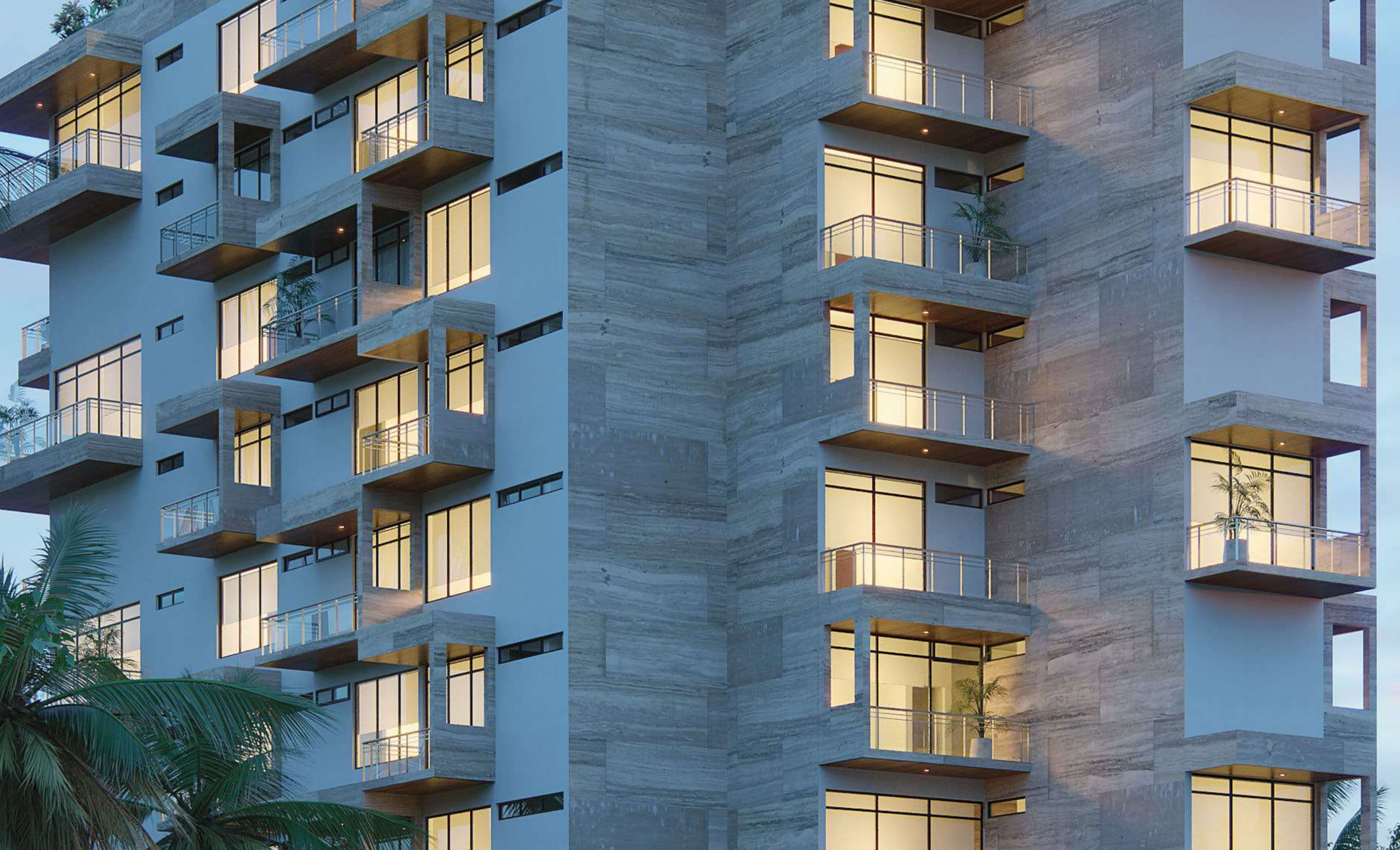
APT 802: 89.94 M2


2 BEDROOMS, 2 FULL BATHROOMS, LIVING
AND DINING ROOM, KITCHEN, LAUNDRY.

APT 803: 142.01 M2

3 BEDROOMS, 3 FULL BATHROOMS,
LIVING AND DINING ROOM, KITCHEN, LAUNDRY.







*take a closer look
and you will see...*

NINTH LEVEL

APT 901: 238.42 M2

4 BEDROOMS, 4 FULL BATHROOMS,
LIVING AND DINING ROOM, KITCHEN, LAUNDRY.

APT 902: 143.20 M2

3 BEDROOMS, 3 FULL BATHROOMS,
LIVING AND DINING ROOM, KITCHEN, LAUNDRY.



ROOFTOP







start calling
the beach your home

