

ARUNÅ

LIVING RESERVE



Nature is a living reserve,
it's our home.

A modern, multi-story residential or commercial building with a clean, minimalist design. The building features light-colored walls, large windows, and balconies with wooden railings. The architecture is characterized by its integration with nature, with lush greenery, including palm trees and various shrubs, planted around the building. In the foreground, a paved parking lot contains three cars: a red sedan, a white sedan, and a dark blue sedan. The sky is bright blue with scattered white clouds. The overall scene is presented as a high-quality architectural rendering.

ARCHITECTURE

HENRY PONCE

Our architectural designs main characteristic is the symbiosis between the interior and the exterior. The interior spaces expand and connect with the exterior achieving a special relationship with the existing natural spaces. Another characteristic of our style is functional architecture and the fact that each of our projects is unique, created with the needs of our users in mind.

AMENITIES

 Lobby

 Business meeting room

 Pool

 Shared terrace

 Yoga and meditation pavilion

 Massage cabin

 Hammock pavilion

 Bike racks

 Beach club



A modern residential courtyard featuring a swimming pool, lounge chairs, and lush greenery. The scene is set in a contemporary building with a covered outdoor dining area. The pool is surrounded by a paved deck with several lounge chairs and a hammock. The background shows a multi-story building with balconies and a variety of tropical plants and trees.

HIGHLIGHTS

 24/7 security

 Wifi in common areas

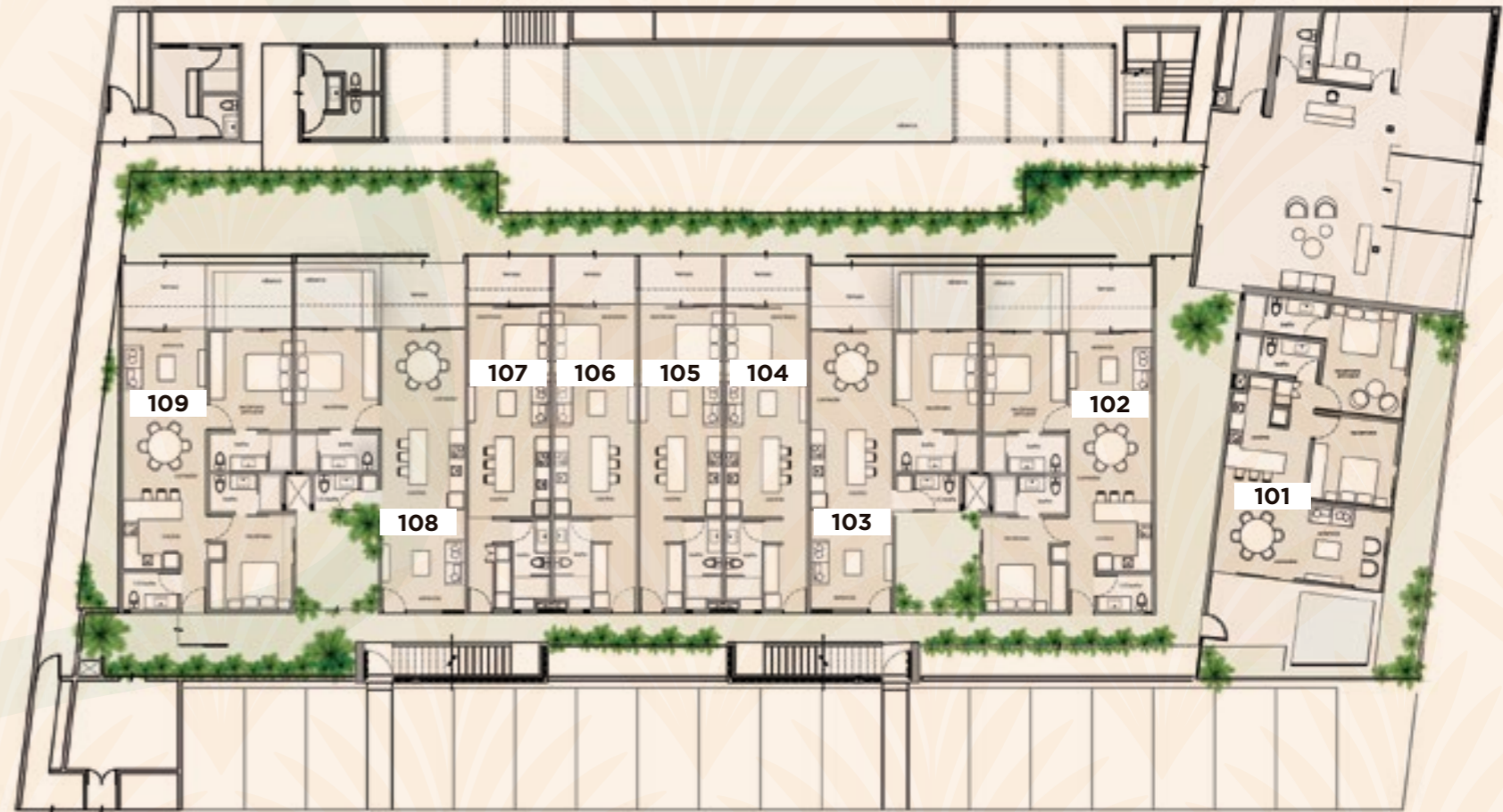
 Controlled access

 Green spaces



GROUND FLOOR

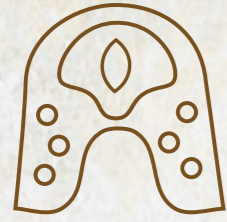
Your grand space in paradise, a place where your experiences will have the best sunsets





TIPOLOGIES

TIPOLOGIES



TARA

Studio

Intimacy, hope, happiness.

Tara creates a bohemian and personal environment which invites you to enjoy the best of Tulum



Reception



1 Full bathroom



Kitchen / Dinning room

With penthouse option:



Roof garden



WC



Private pool



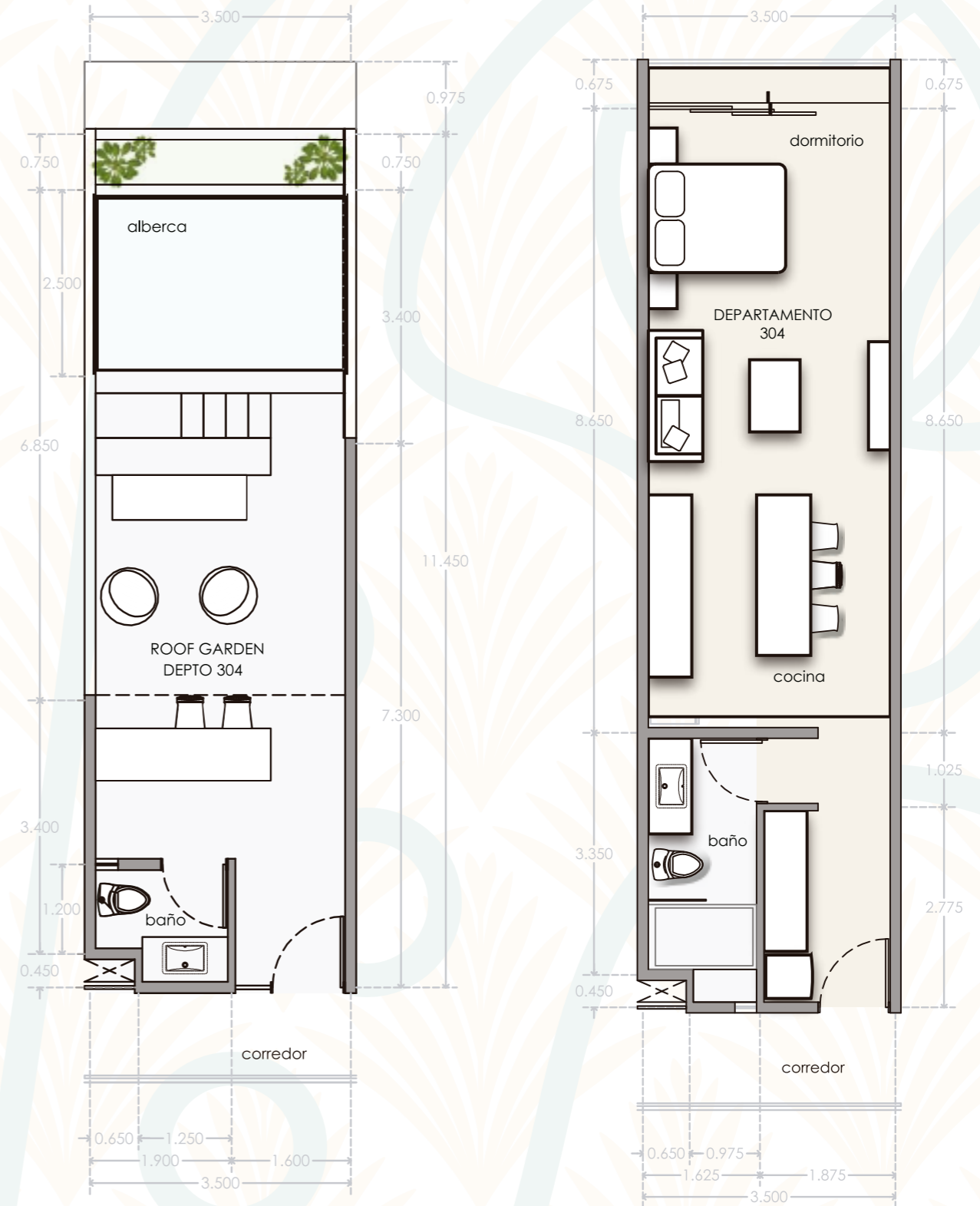
Bar



Lounge area

Standard Interior: 472.7 ft² Balcony: 21.6 ft² **Total: 494.3 ft²**

PH Interior: 472.7 ft² Balcony: 21.6 ft² Sun Roof: 434.1 ft² **Total: 928.5 ft²**





TIPOLOGIES



1 Room


Life, comfort, peace

We create spaces where you can enjoy the tranquility generated by the sunlight

 1 Room

 1 Dining Room

 Kitchen


 Reception


 2 Bathrooms

With penthouse option:

 Roof garden

 WC

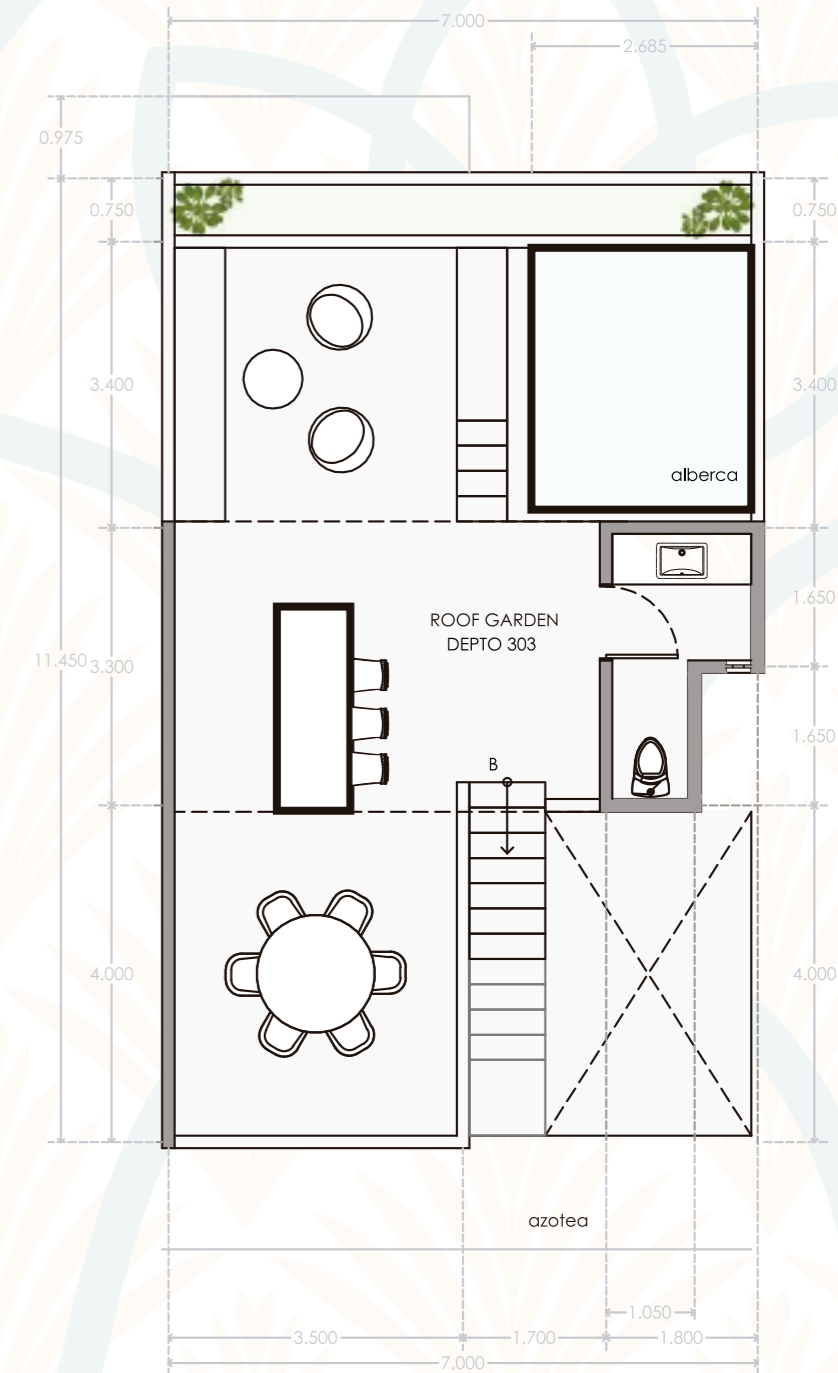
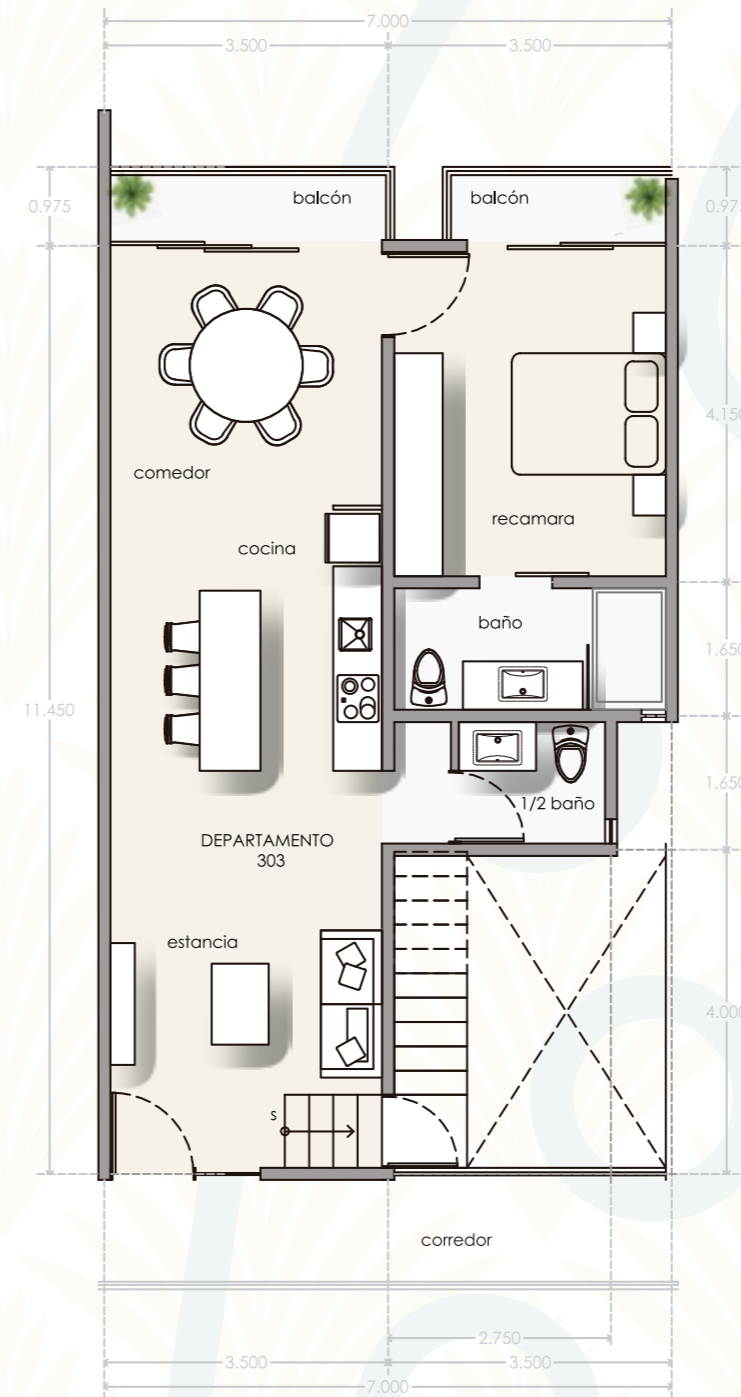
 Private pool

 Bar

 Lounge area

Standard Interior: 716.4 ft² Balcony: 59.2 ft² **Total: 775.6 ft²**

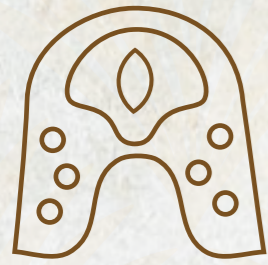
PH Interior: 755.2 ft² Balcony: 59.2 ft² Exterior: 719.9 ft² **Total: 1533.8 ft²**







TIPOLOGIES




SURIA

2 Rooms


Abundance, prosperity, stability.

Variety of ample spaces to share with your loved ones

 Dining Room

 2 Rooms


 Kitchen

 Reception

 2 Bathrooms


With penthouse option:

 Roof Garden

 Dining Room

 Private Pool

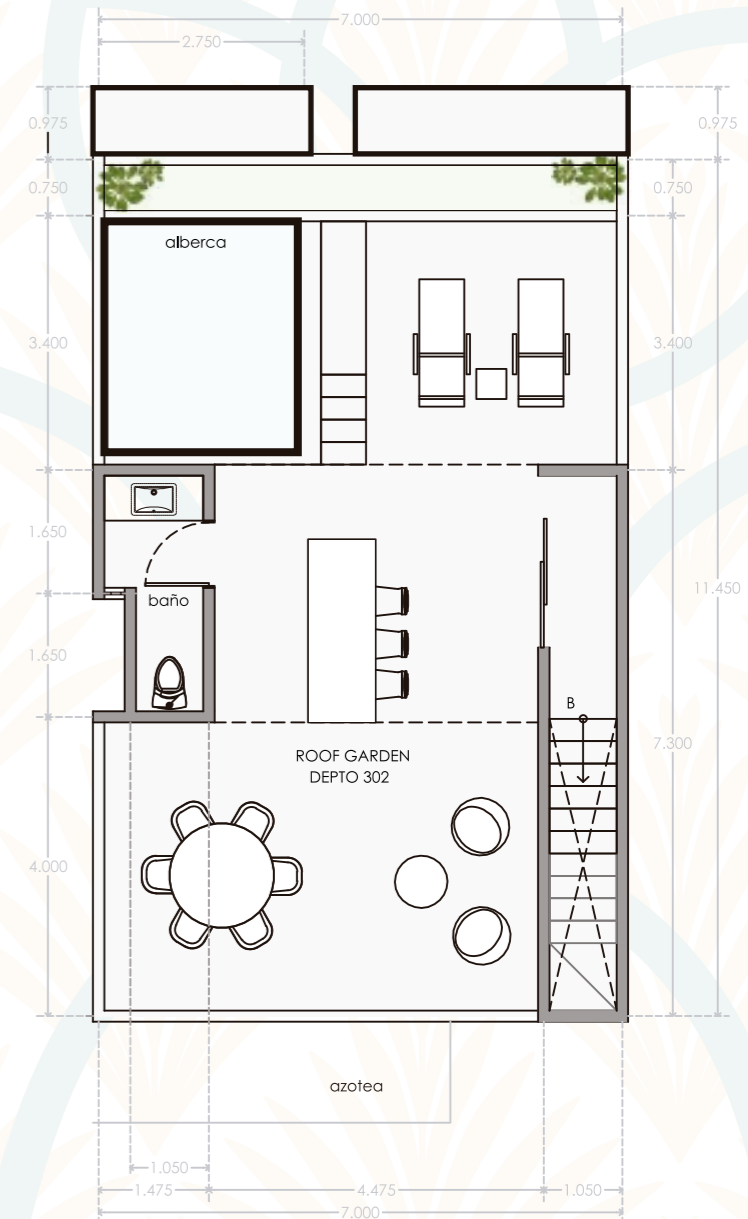
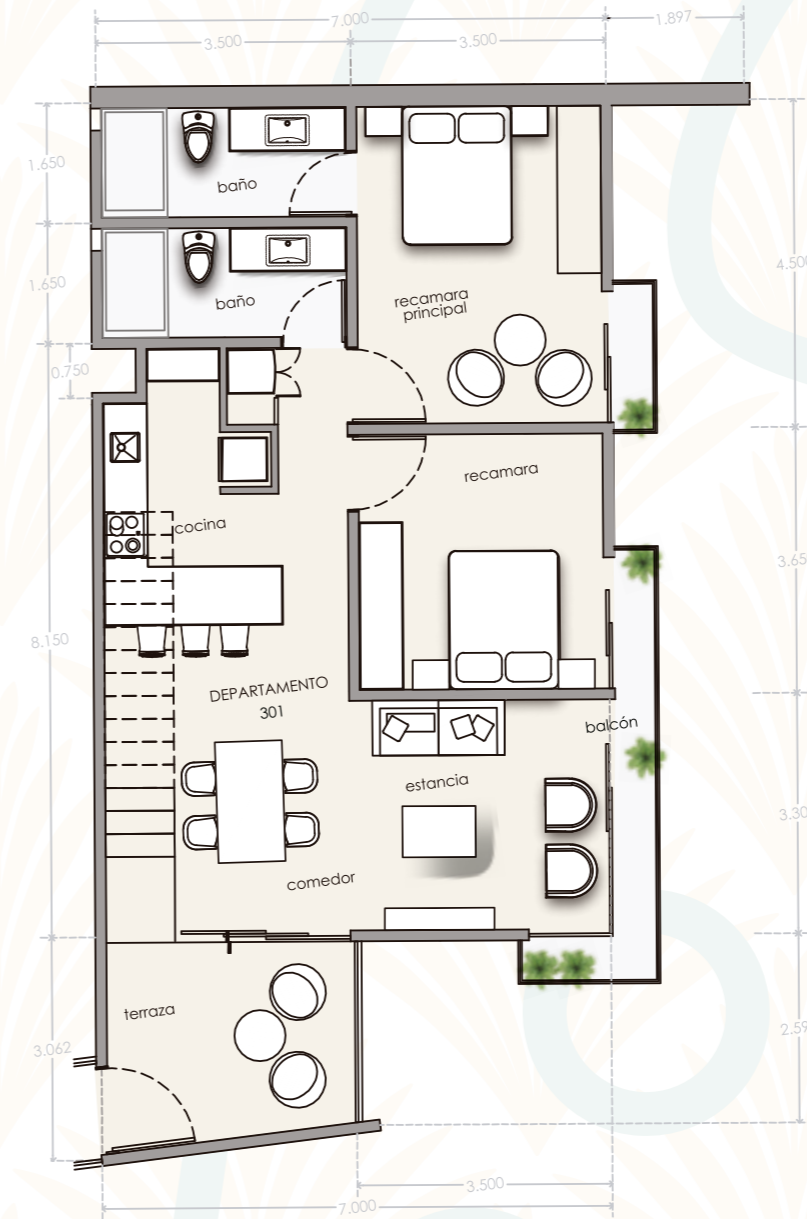
 Bar

 Lounge Area

 WC

Standard Interior: 951.5 ft² Balcony: 45.2 ft² **Total: 996.7 ft²**

PH Interior: 883.1 ft² Balcony: 59.2 ft² Exterior: 881.0 ft² **Total: 1823.4 ft²**







LOCATION

In the direction of the Caribbean Sea you will have the direct way to the more paradisiacals beaches of Mexico.

Región 15, Manzana 018, Calle 8 Sur
(Av. Guardianes Mayas)
Tulum, Q. Roo.

