

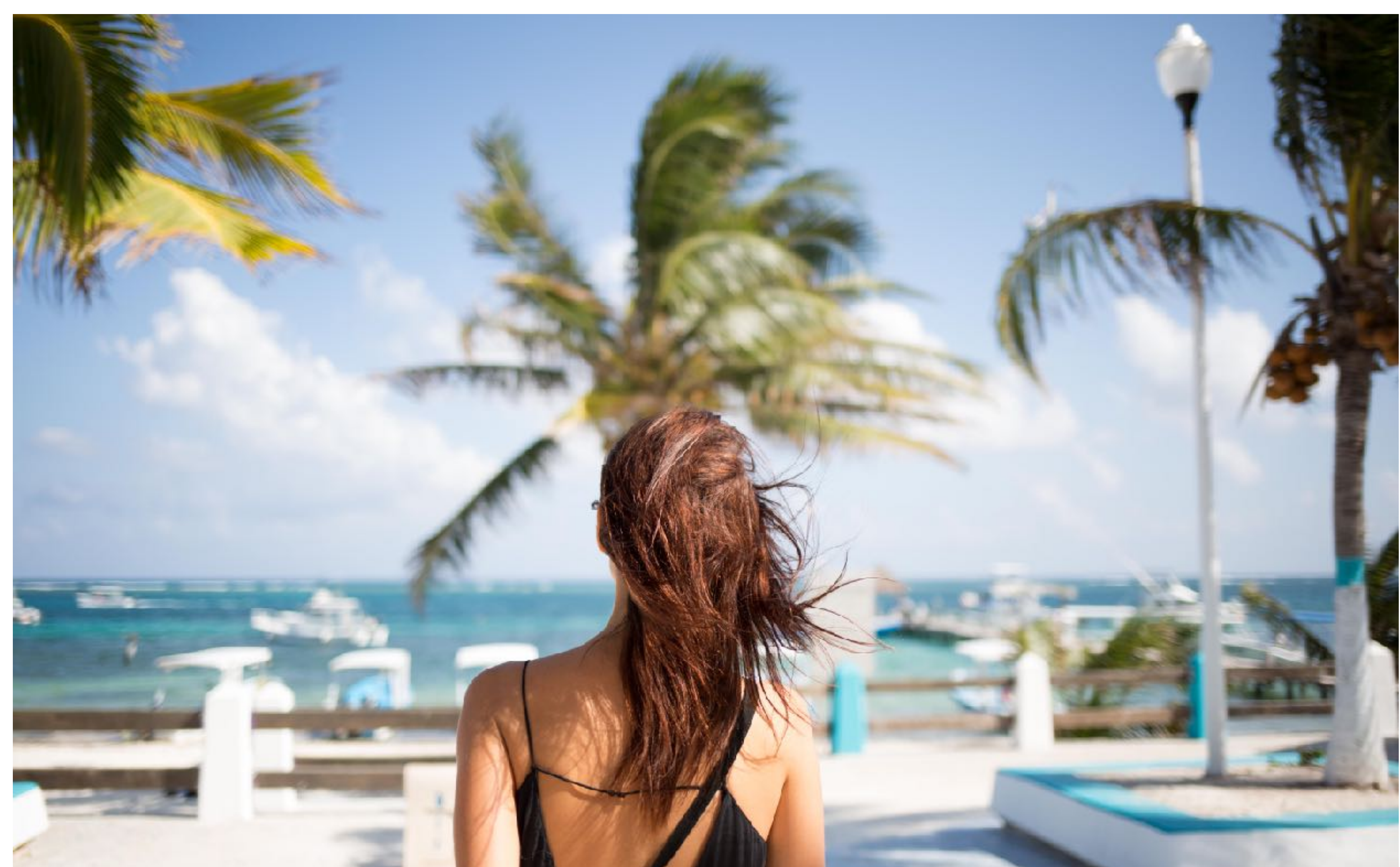
CONDO // PLAYA

# IPANA

P. D. C

—  
M X





# Location

---

PLAYA DEL CARMEN  
QUINTANA ROO

---

---

01. Ipana  
Siempre Playa  
Yellow Board

---

02. Distance  
of 400 mts  
to the beach

---











---

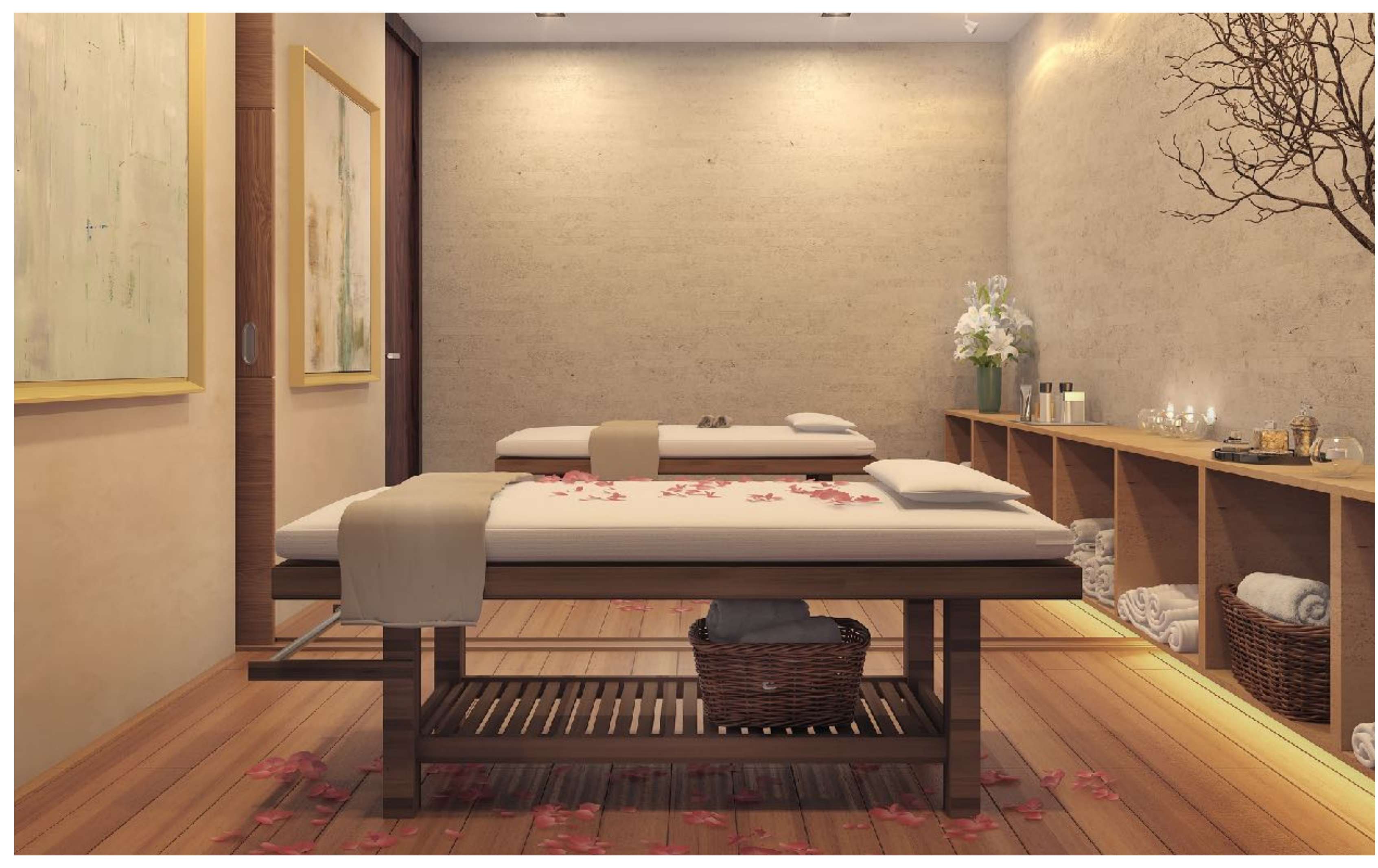
# Our Amenities

---

- 4 lobby.
- Sports bar.
- Business center.
- 7 elevators.
- Gym.
- Spa.
- Kids club.
- Sky Bar.
- 4 Pools.
- Underground parking lot.
- Outdoor spaces with tranquil beauty of manicured grounds exclusive for our residents.













# Ipana Offers:

- 4 apartment towers: A, B, C, D
- Ground Floor (000's)
- First Floor (100's)
- Second Floor (200's)
- Third Floor (300's)
- Fourth Floor (400's)
- Fifth Floor (500's)
- Rooftop





**BUILDING B**

**BUILDING A**

**BUILDING A**

**BUILDING C**

**BUILDING D**

**38th street**

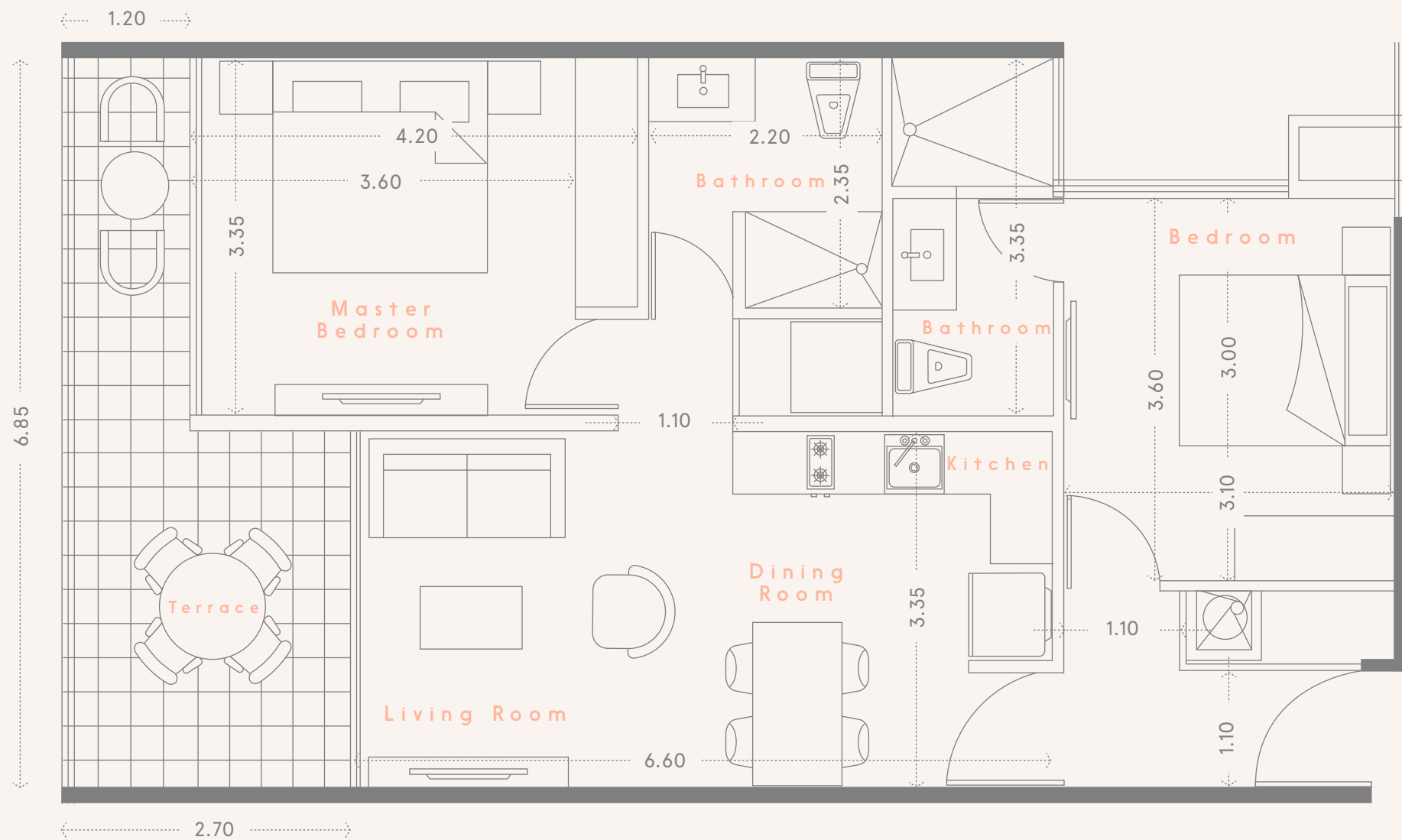
**Delivery date: SUMMER 2020**

# 2A

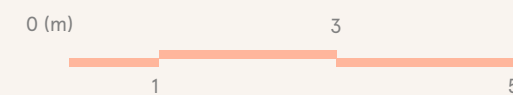
APARTMENT

Interior | 71.03 m<sup>2</sup>

Exterior | 13.53 m<sup>2</sup>



I  
—  
P. C  
//  
M X

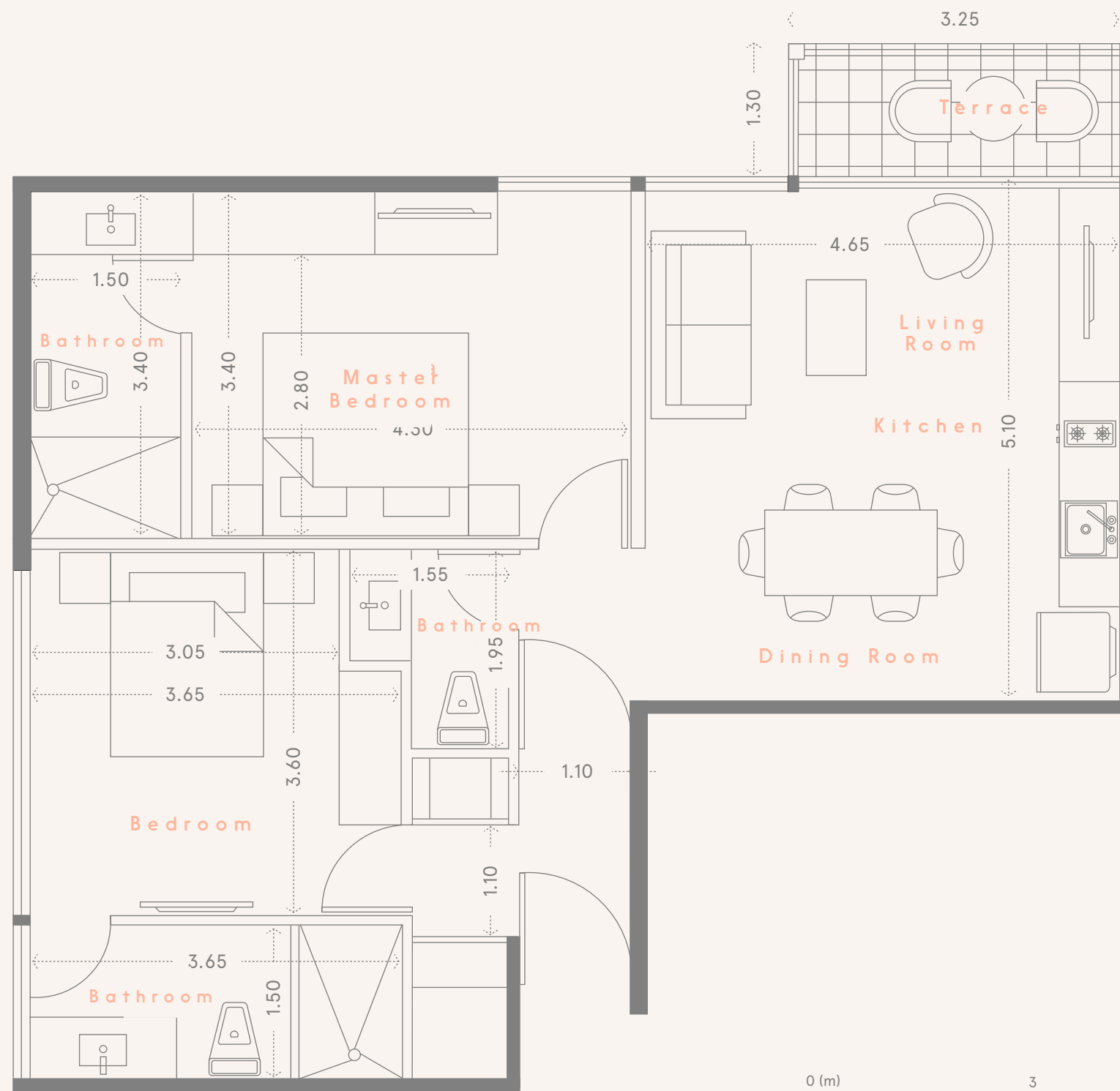


# 2E

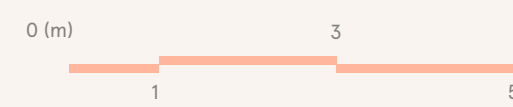
APARTMENT

Interior | 79.12 m<sup>2</sup>

Exterior | 4.32 m<sup>2</sup>



— P. C  
// M X

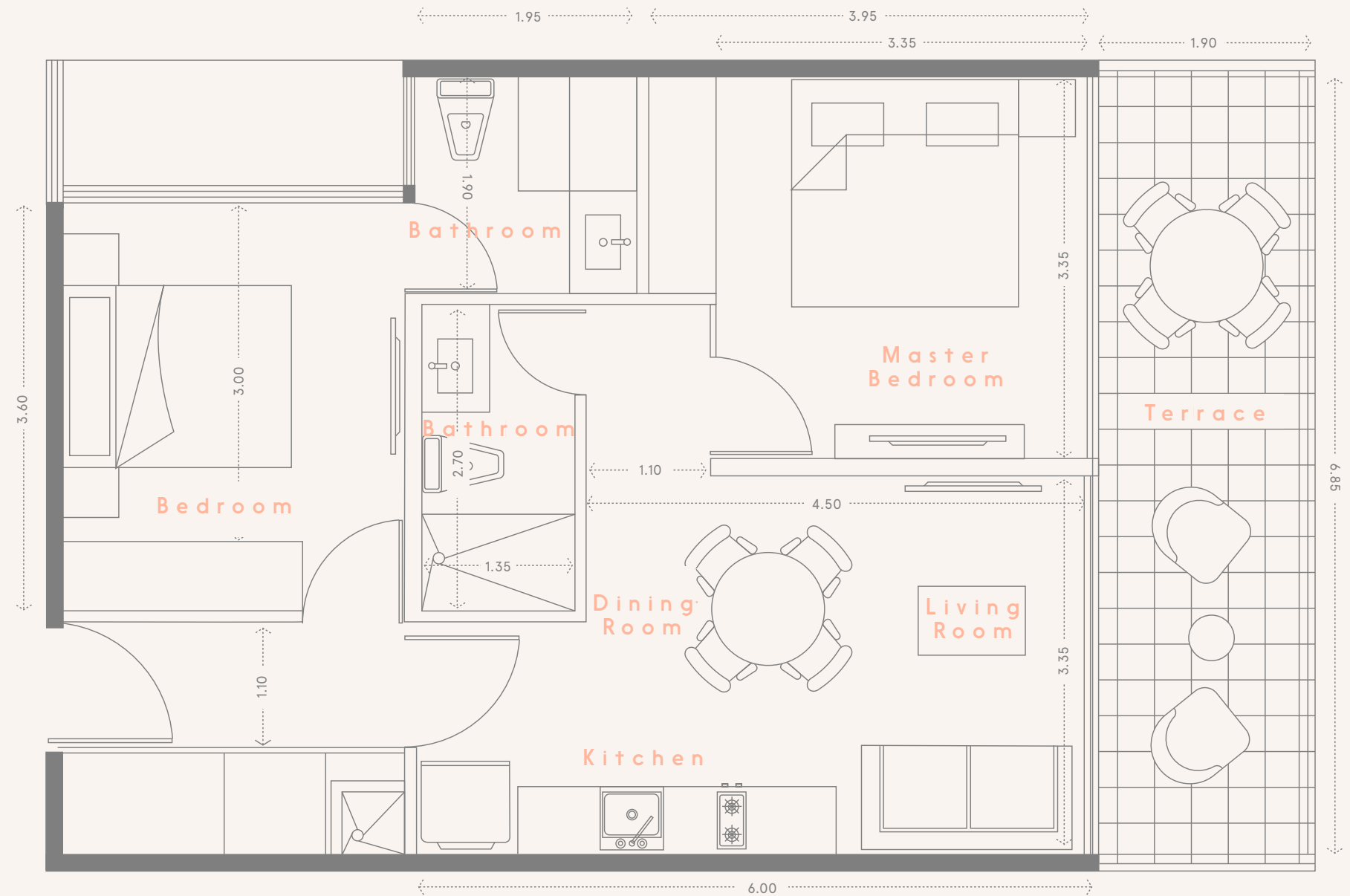


# 2N

APARTMENT

Interior | 61.15 m<sup>2</sup>

Exterior | 13.30 m<sup>2</sup>



P. C  
//  
M X









# Delivery Date: Summer 2020