

PALMMA

T I E R R A



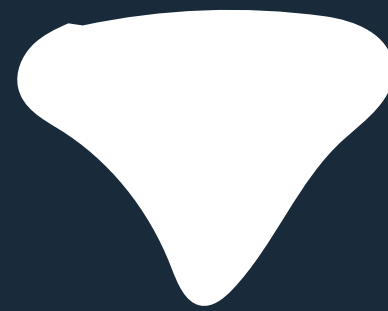
PRESENTACIÓN



PLAN MAESTRO



AMENIDADES



UNIDADES



UBICACIÓN





ENCUÉNTRATE

ANTI MISMO



Tulum es regresar a
nosotros mismos.





Rodearnos de historia
y magia



A person with long, dark, straight hair is seen from behind, looking at a wall covered in crumpled paper. The scene is dimly lit with a strong teal or cyan color cast. The crumpled paper is piled up, creating a textured, chaotic background. The person's hair is dark and appears to be wet or slicked back. The overall mood is somber and contemplative.

Y empaparnos hasta
el espíritu

The background of the image is a dense, close-up shot of palm fronds. The fronds are a deep, dark green color and are covered in numerous small, clear water droplets, suggesting a recent rain or a humid environment. The lighting is soft, highlighting the texture of the leaves and the glistening water. The overall mood is serene and natural.

TULUMES
PALALMA

Acceso Principal



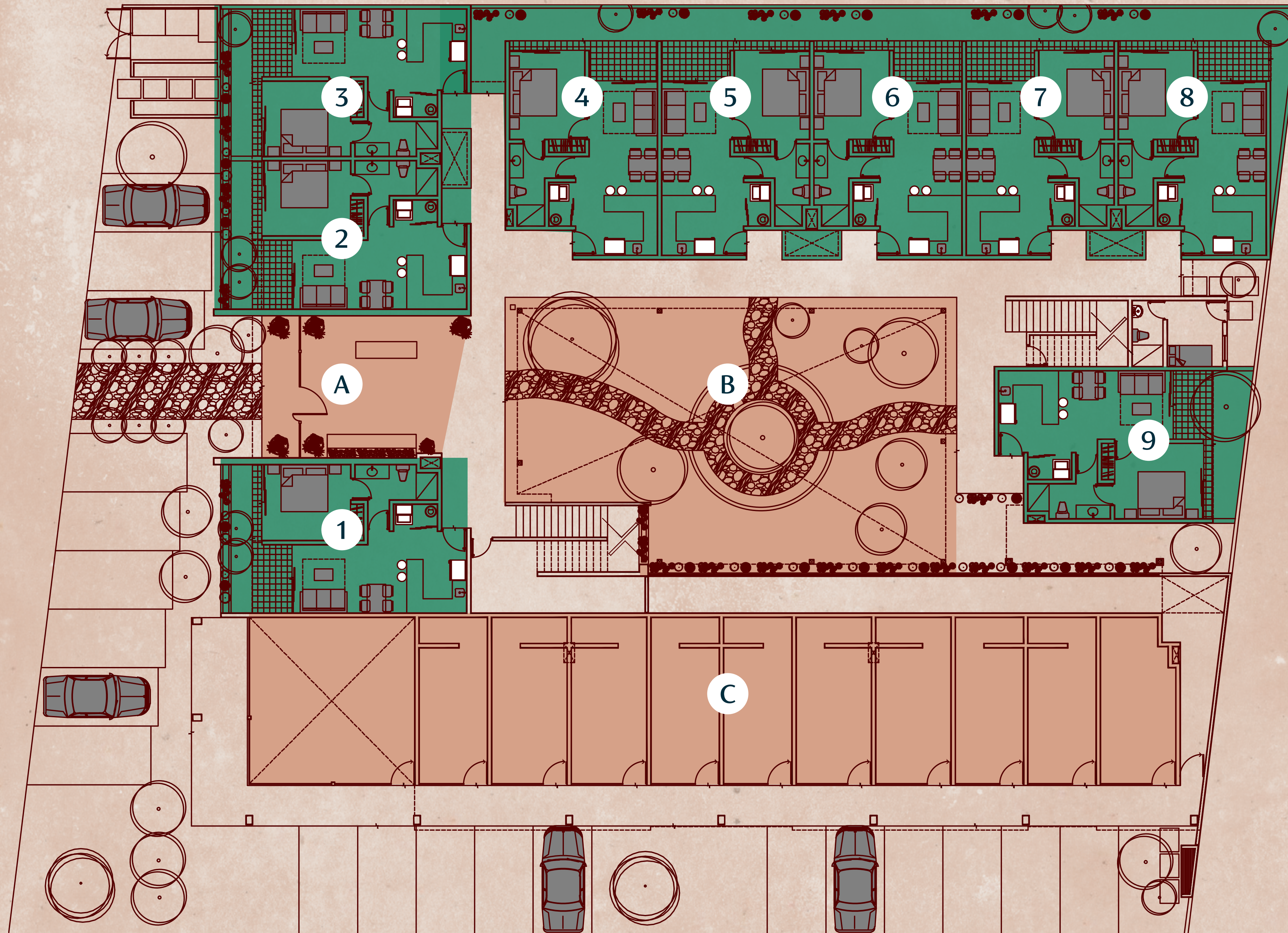
The background is a dark blue architectural floor plan with white lines. It shows various rooms, corridors, and furniture like desks, chairs, and tables. The text is centered over the plan.

PLAN
MAESTRO

Plan maestro - PB

APARTAMENTOS
1-9

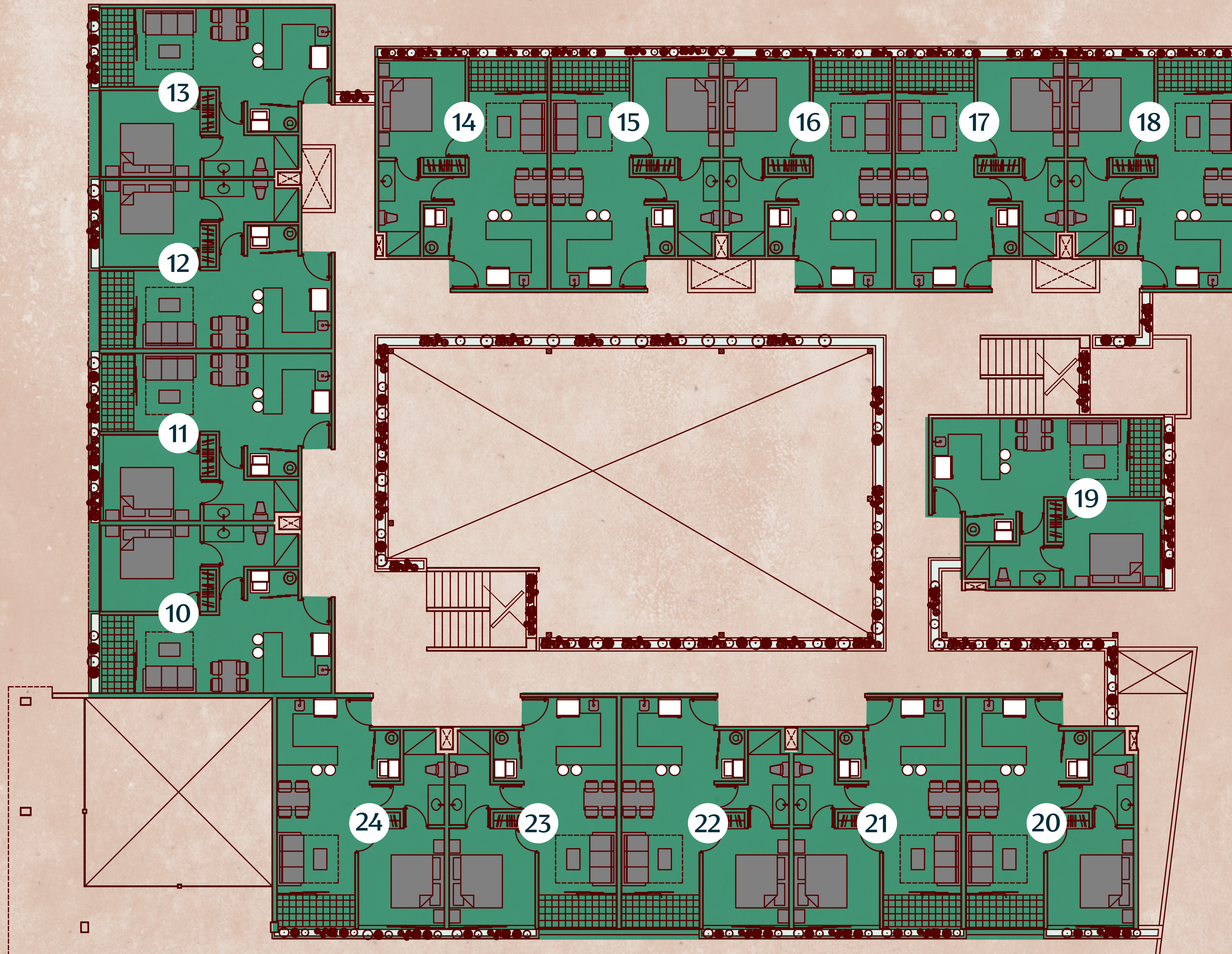
AMENIDADES
A- Artful Lobby
B - Jungle Patio
C- Shops & Venues



Plan maestro - N1

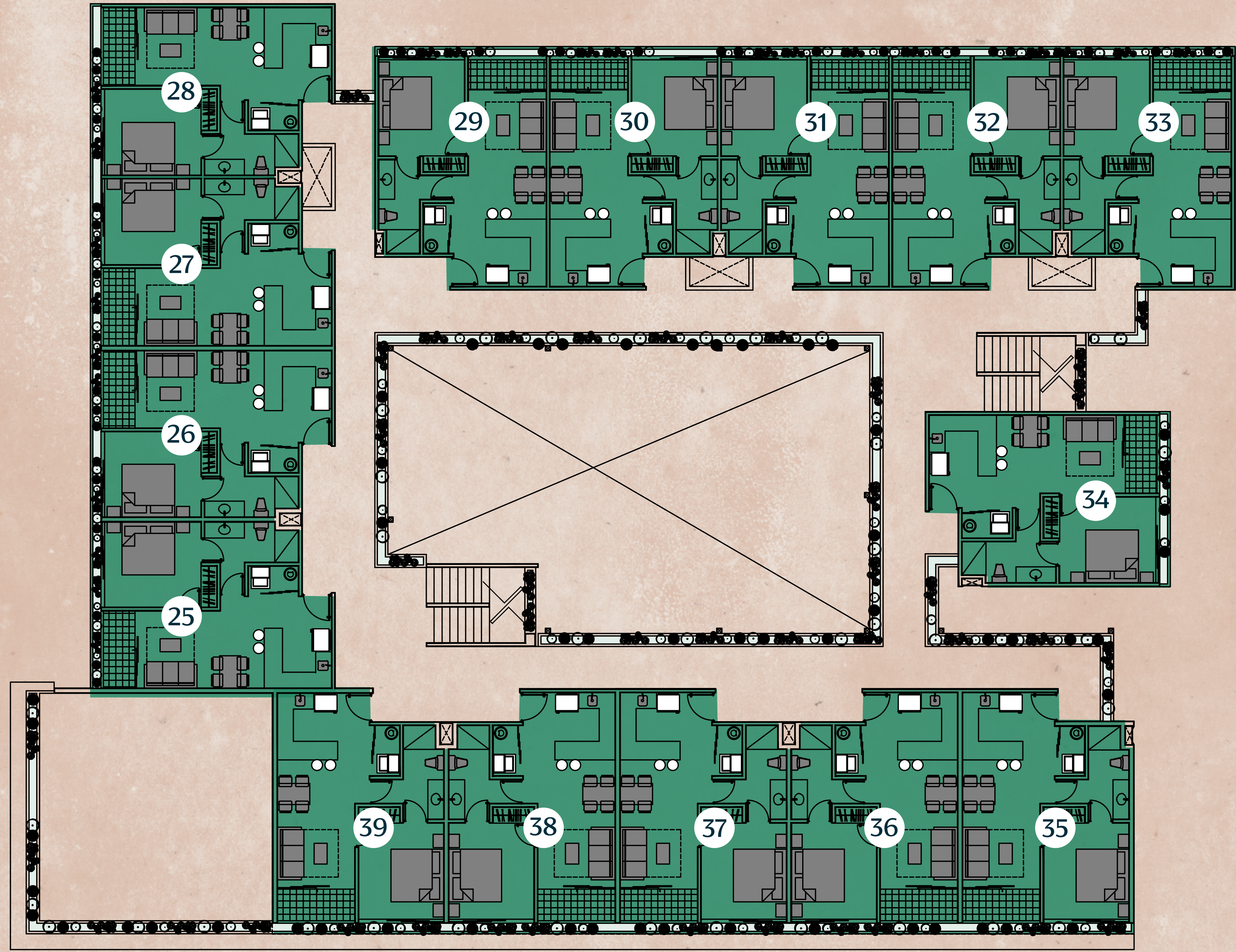
APARTAMENTOS

10-24



Plan maestro - N2

APARTAMENTOS
25-39



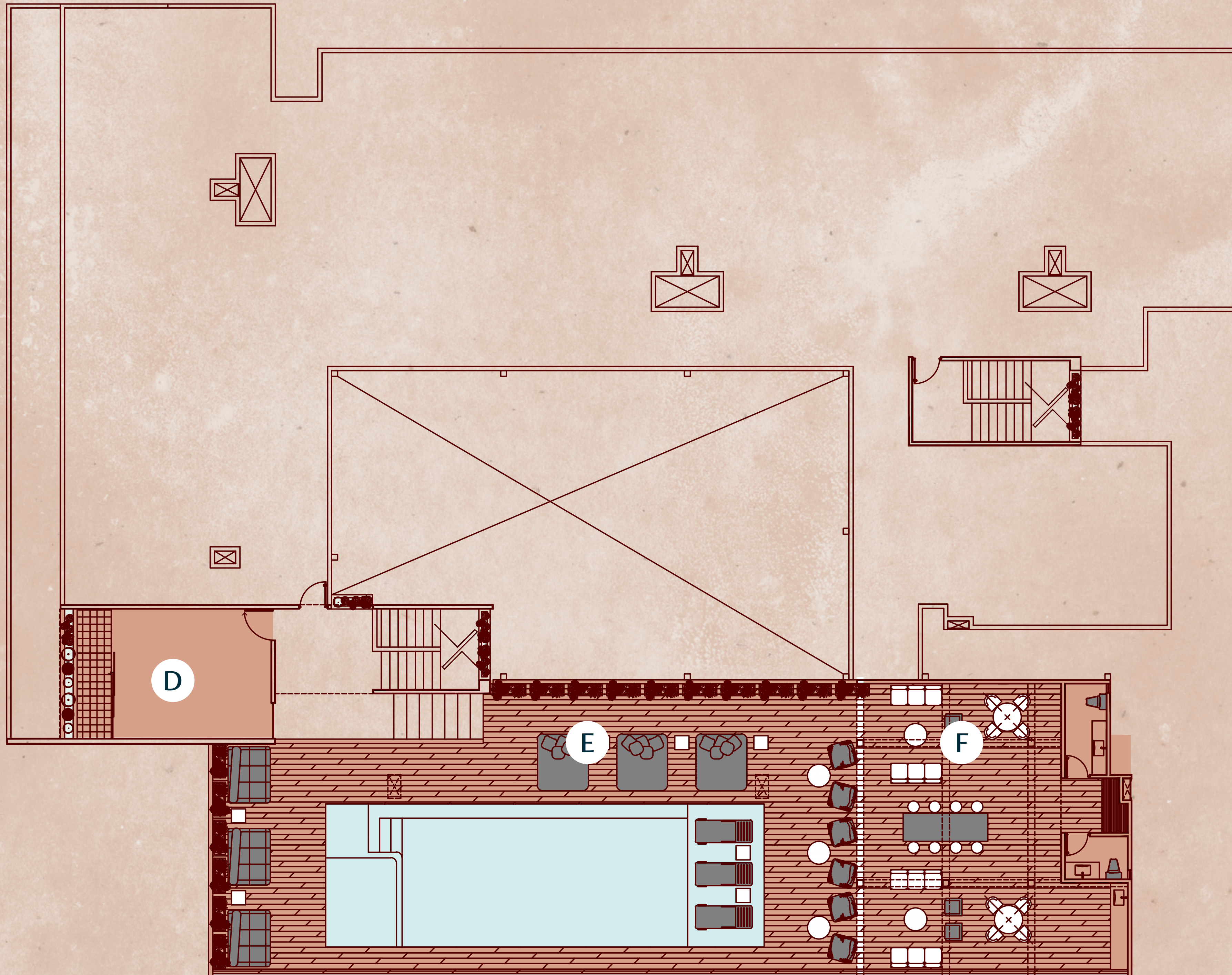
Plan maestro - RG

AMENIDADES

D - Gym

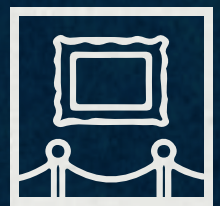
E - Poolside Sundeck

F - Bar Grill Zone





AMENIDADES



ARTFUL LOBBY



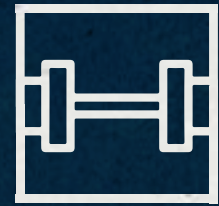
SHOPS & VENUES



JUNGLE PATIO



COMMUNITY BIKES



GYM



SKY POOL



POOLSIDE SUNDECK



POOLSIDE LOUNGE & BAR



GRILL ZONE



BEACH CLUB



HIGH SPEED INTERNET



Shops & Venues





Jungle Patio





Gym





Poolside Lounge & Bar





Poolside Sundeck





UNIDADES

PATIO

65 m²

Planta baja
Con patio

SOLE

55 m²

Segundo y tercer
nivel



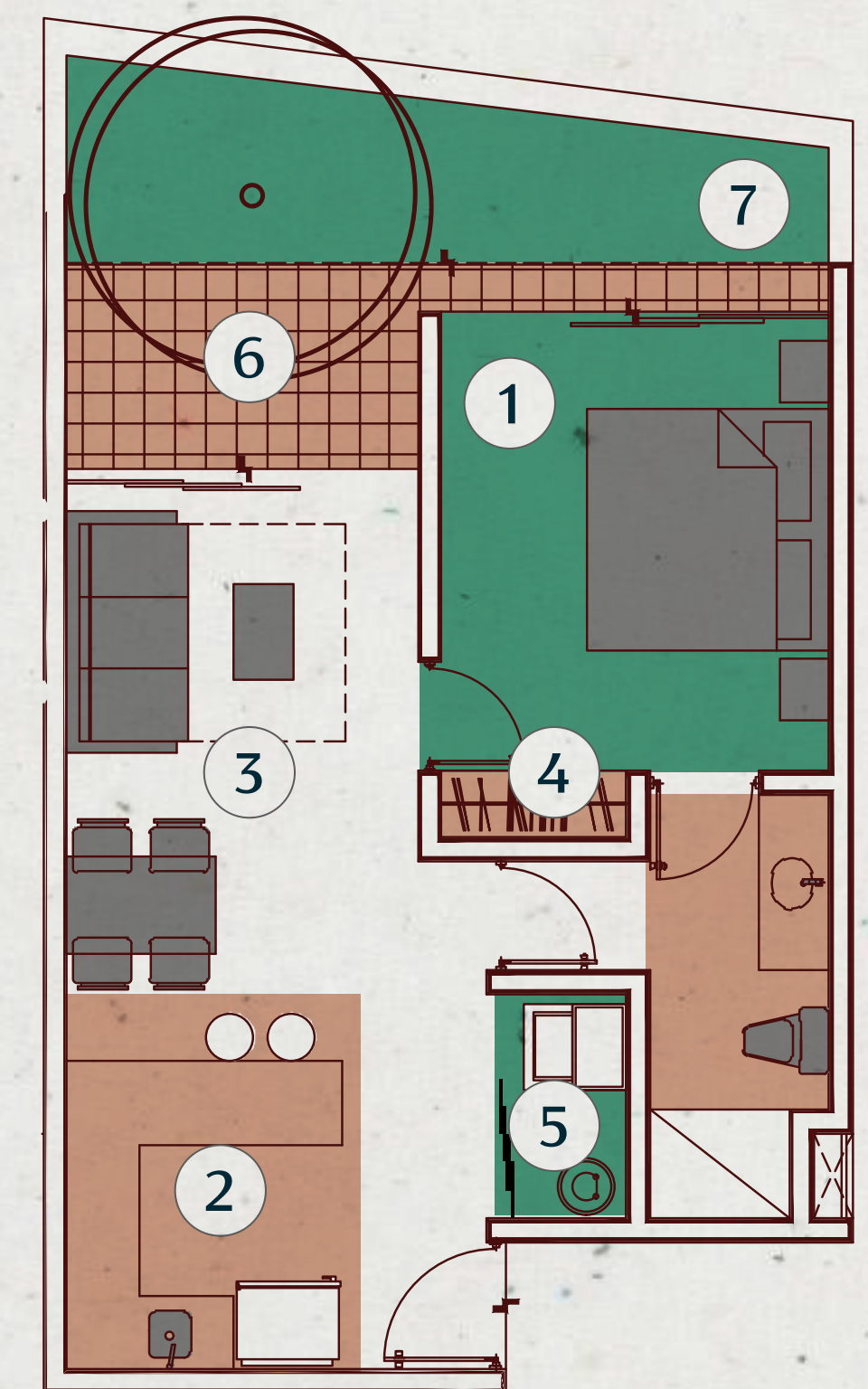
PATIO

65 m² Totales

Departamentos totalmente equipados

- 1. Recámara
- 2. Cocina
- 3. Sala - Comedor
- 4. Clósets
- 5. Laundry
- 6. Terraza
- 7. Patio

[VER FACT SHEET](#)



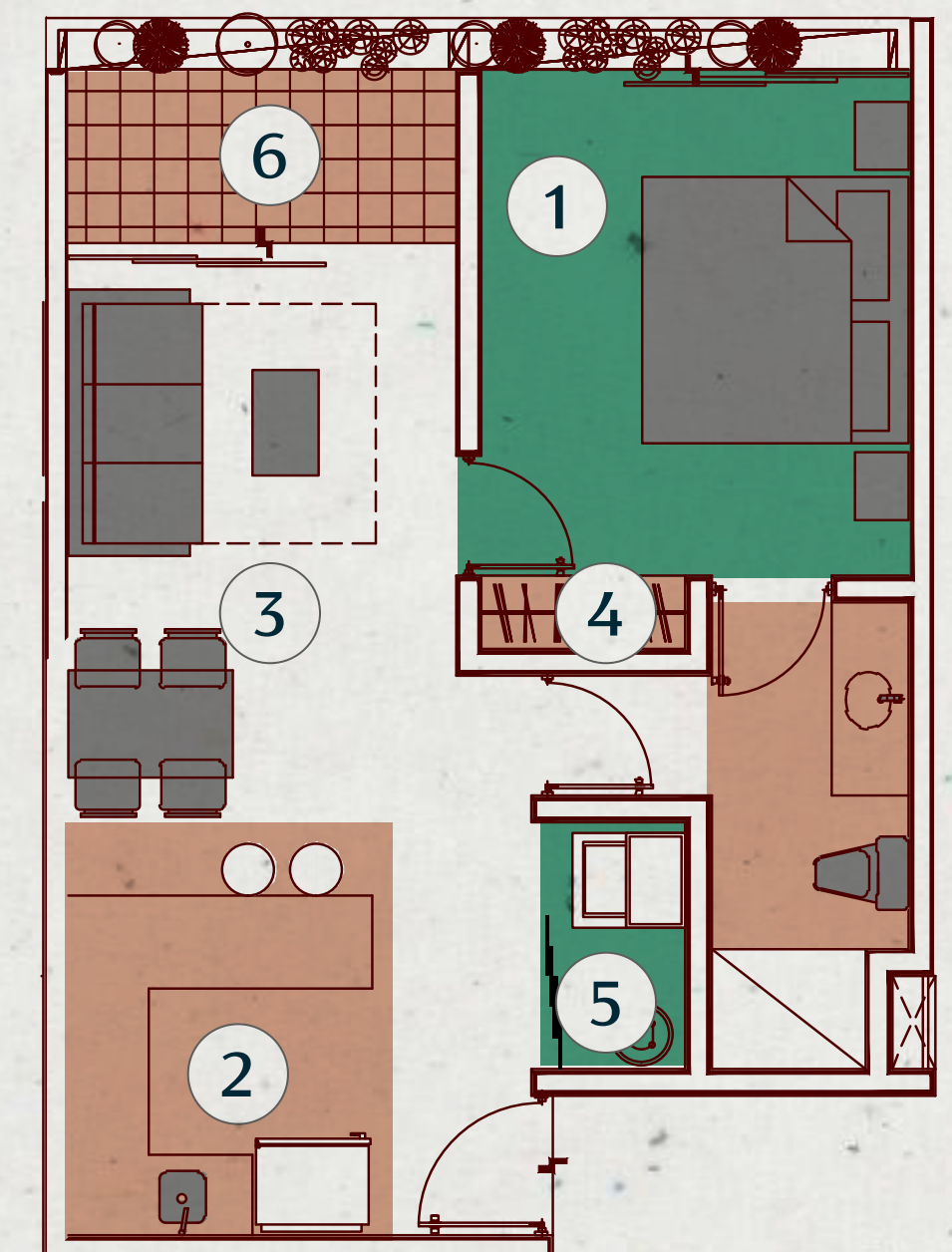
SOLE

55 m² Totales

Departamentos totalmente equipados

- | | |
|-------------------|------------|
| 1. Recámara | 4. Clósets |
| 2. Cocina | 5. Laundry |
| 3. Sala - Comedor | 6. Terraza |

[VER FACT SHEET](#)





UBICACIÓN

Región 15, Mza 27, Lote 5
Av. Guardianes Maya por Calle 3 Poniente
La Veleta, Tulum, Quintana Roo, México.