



Ceiba AT 25

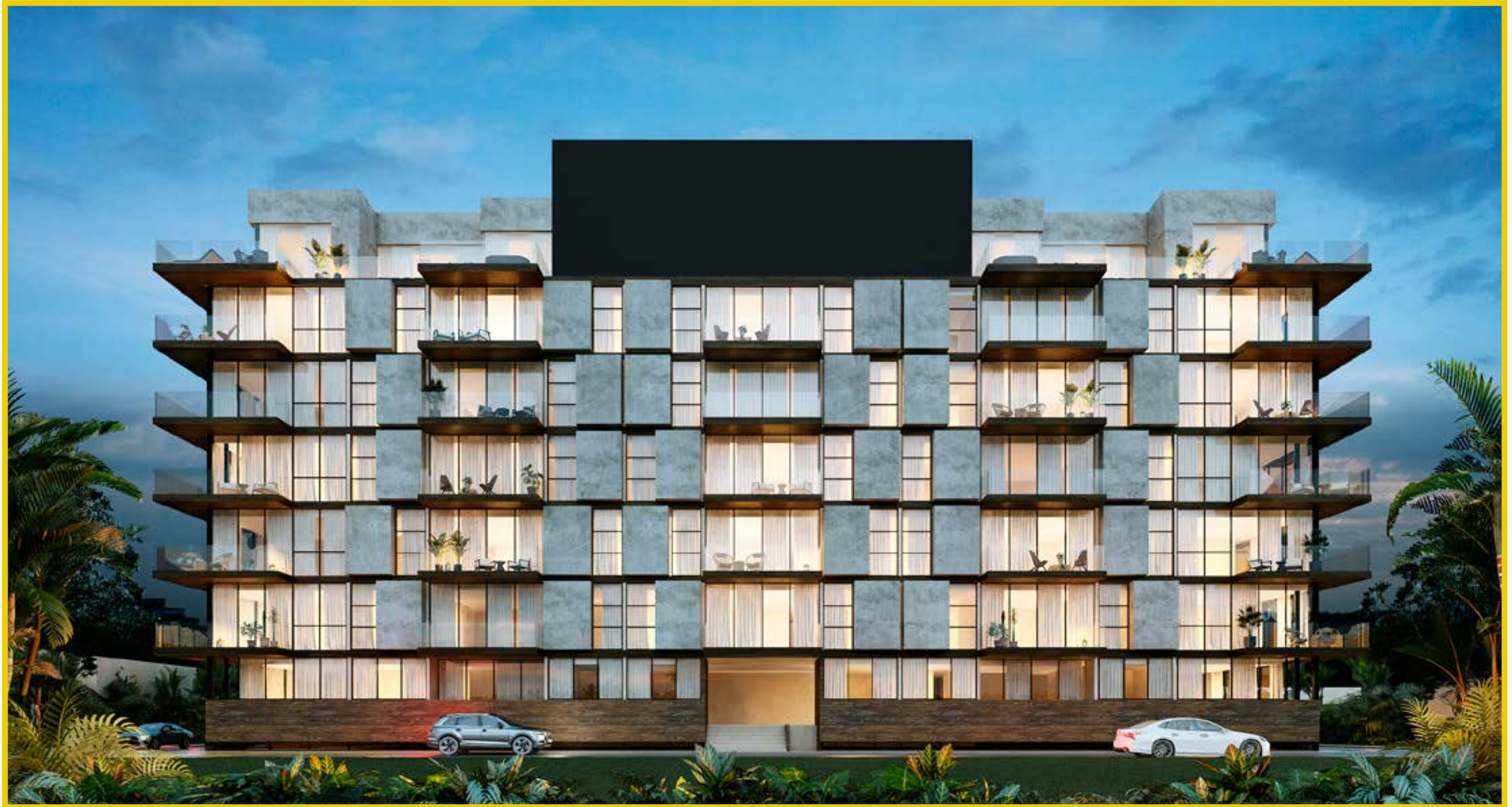
CONDO PARADISE





The most stylish equity investment in Playa del Carmen is in Ceiba 25 Condo Paradise, an exclusive Residence project that raises the standards of design, luxury and comfort in developments along the Riviera Maya.

Inside, a paradise awaits you with luxurious rooms and spaces that will not only take your breath away, they will make you think twice before leaving your home.



Amenities





Infinity pool

Restaurant

Infinity Pool

Fitness Center

Pool Bar

Parking lot

Multipurpose room



Infinity Pool and pool bar with panoramic views



Pool Bar



*Rooftop with a interior view into the bulding,
Providing life into the common areas*

Master Plan





6 Levels

92 Units , From 559.723 ft²
with 1, 2 Y 3 Bedrooms



Dinning table with living room



Dinning room



Master Bedroom



Double bed bedroom

The background of the slide features two images of citrus fruits. The top image shows a slice of grapefruit with vibrant red segments, resting on a silver plate with an ornate, embossed floral border. The bottom image shows a whole orange being held by a silver fork, with the orange's surface appearing bright and textured. The text 'Type of Departments' is centered in a white box with a yellow border, overlaid on the middle of the slide.

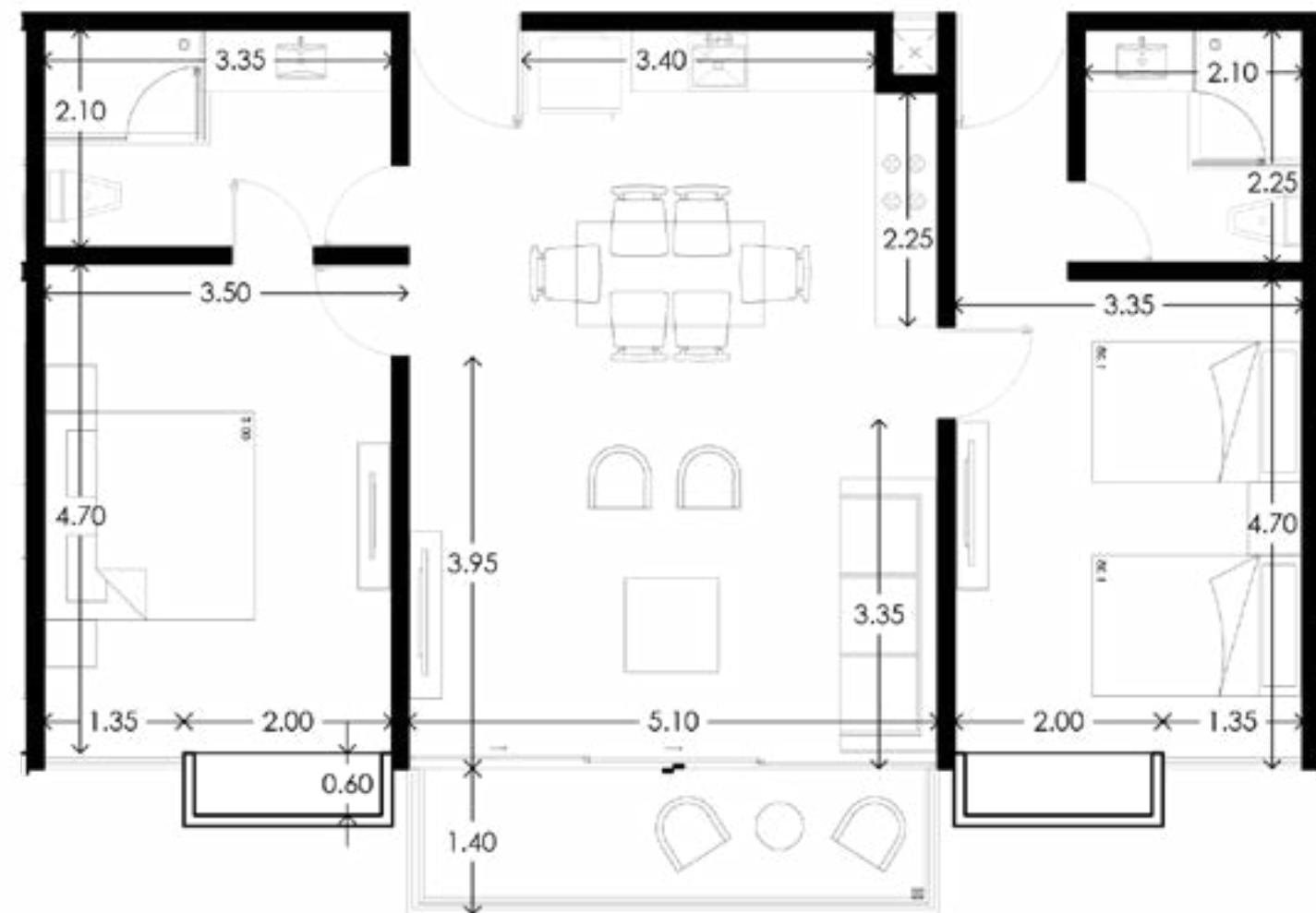
Type of Departments

Type A1 Department



Type A1 Department

Type	A1
Bedrooms	2
Bathroom	2
Coverd Terrace	76.85 ft ²
No Coverd Terrace	0 ft ²
Interior surface	922.46 ft ²
Total Surface	999.32 ft ²



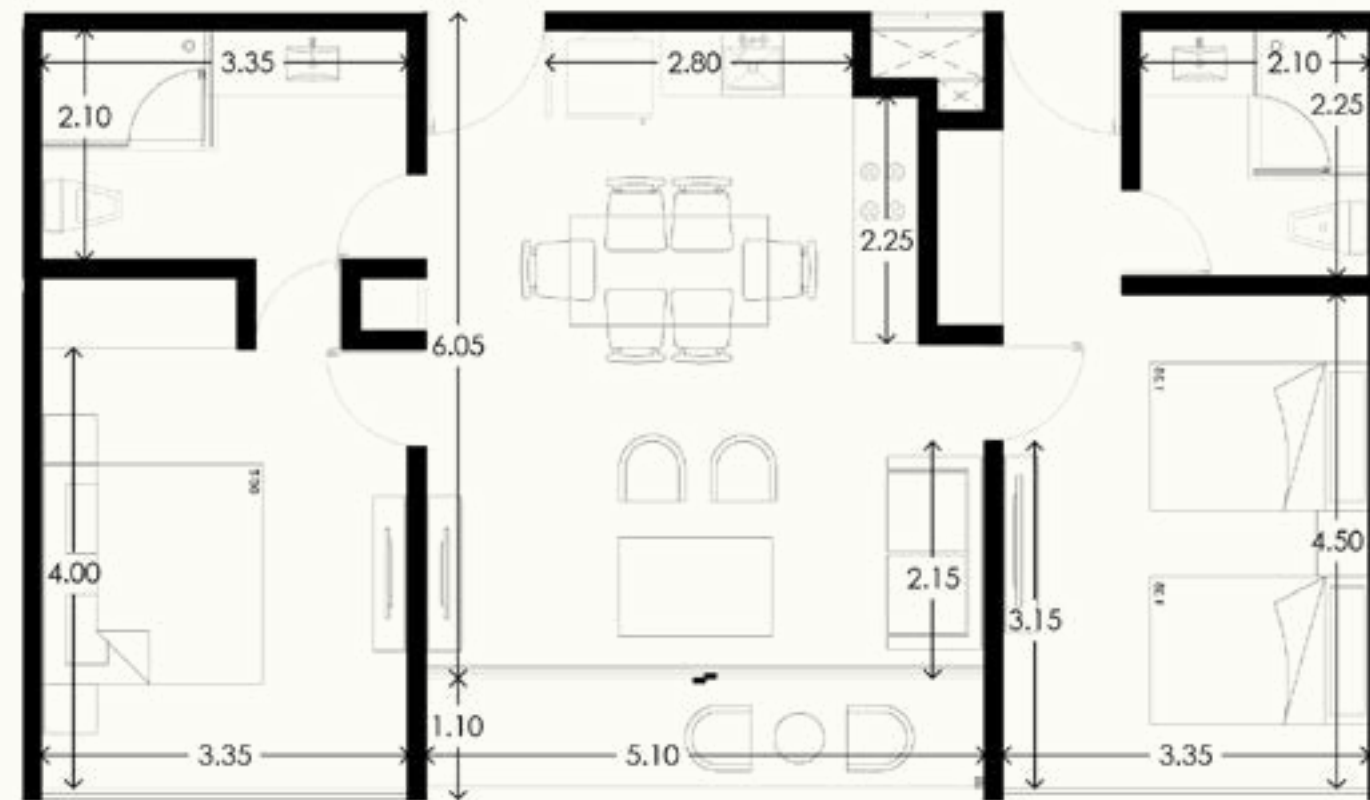
Type A2 Department



Type A2 Department

Type	A2
Bedrooms	2
Bathroom	2
Coverd Terrace	54.89 ft ²
No Coverd Terrace	0 ft ²
Interior surface	823.97 ft ²
Total Surface	878.87 ft ²

Top Floor



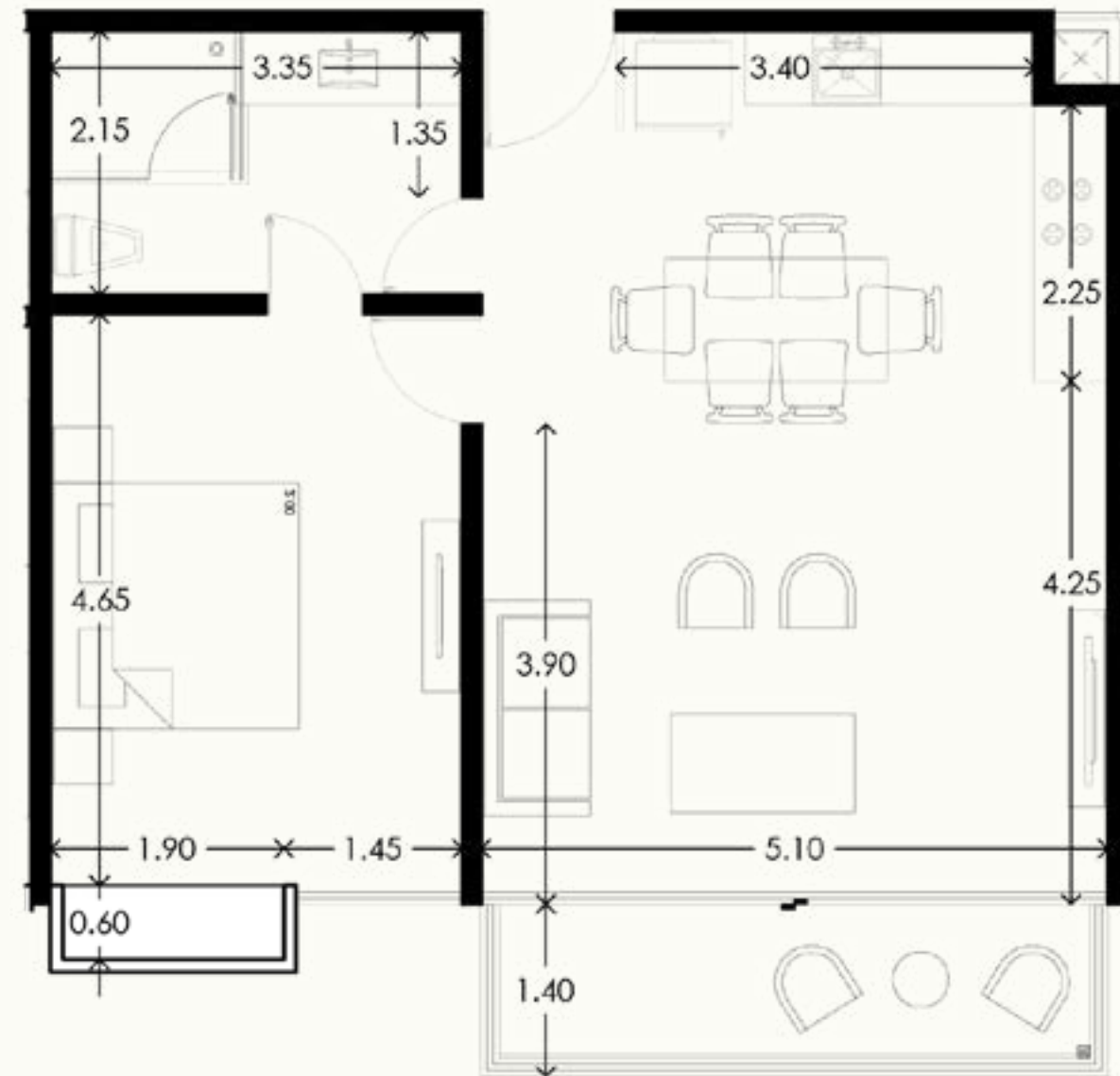
Type B1 Department



Type B1 Department

Type	B1
Bedrooms	1
Bathroom	1
Coverd Terrace	76.85 ft ²
No Coverd Terrace	0 ft ²
Interior surface	654.98 ft ²
Total Surface	67.99 ft ²

Top Floor



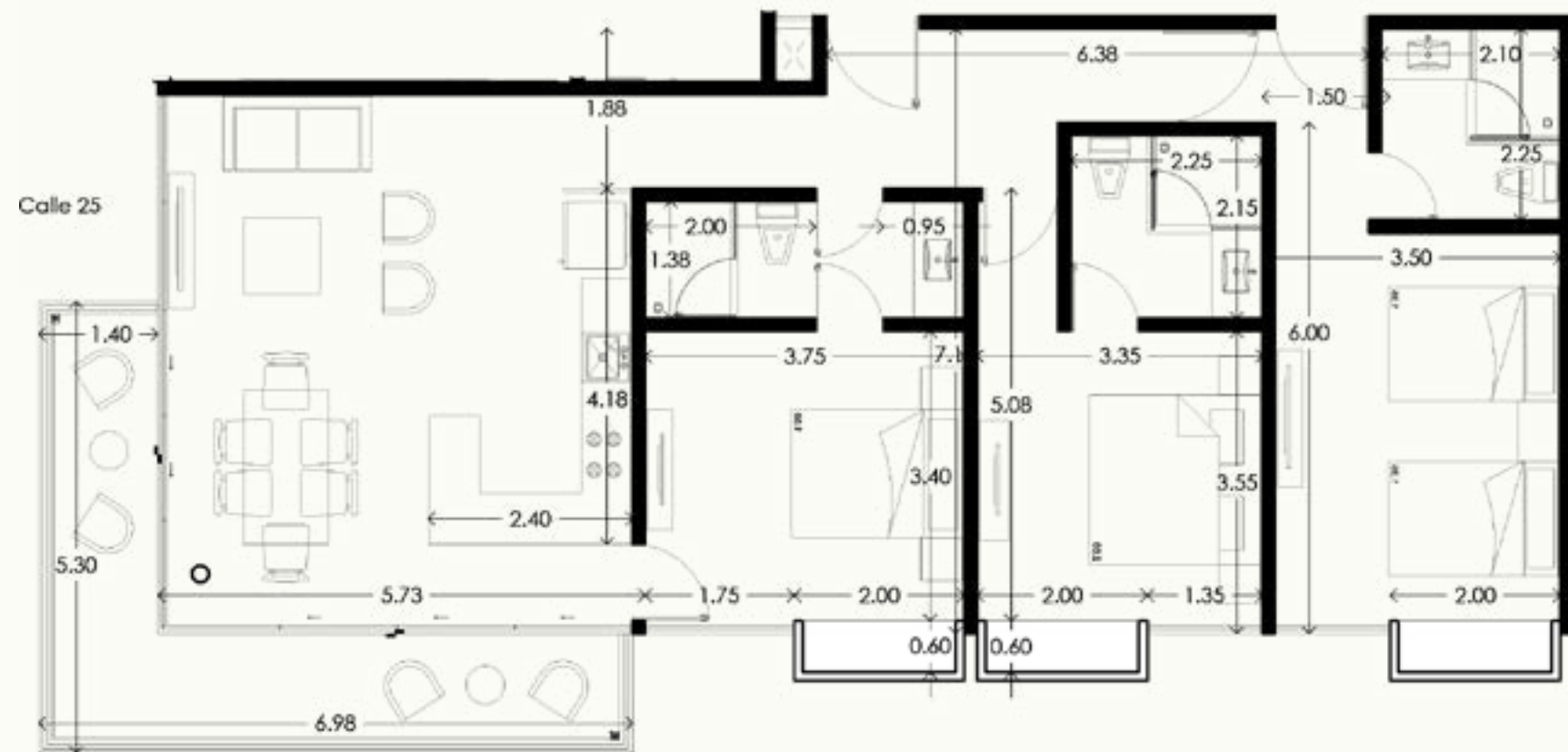
Type C1 Department



Type C1 Department

Type	C1
Bedrooms	3
Bathroom	3
Coverd Terrace	163.61 ft ²
No Coverd Terrace	0 ft ²
Interior surface	1197.48 ft ²
Total Surface	1361.09 ft ²

Top Floor



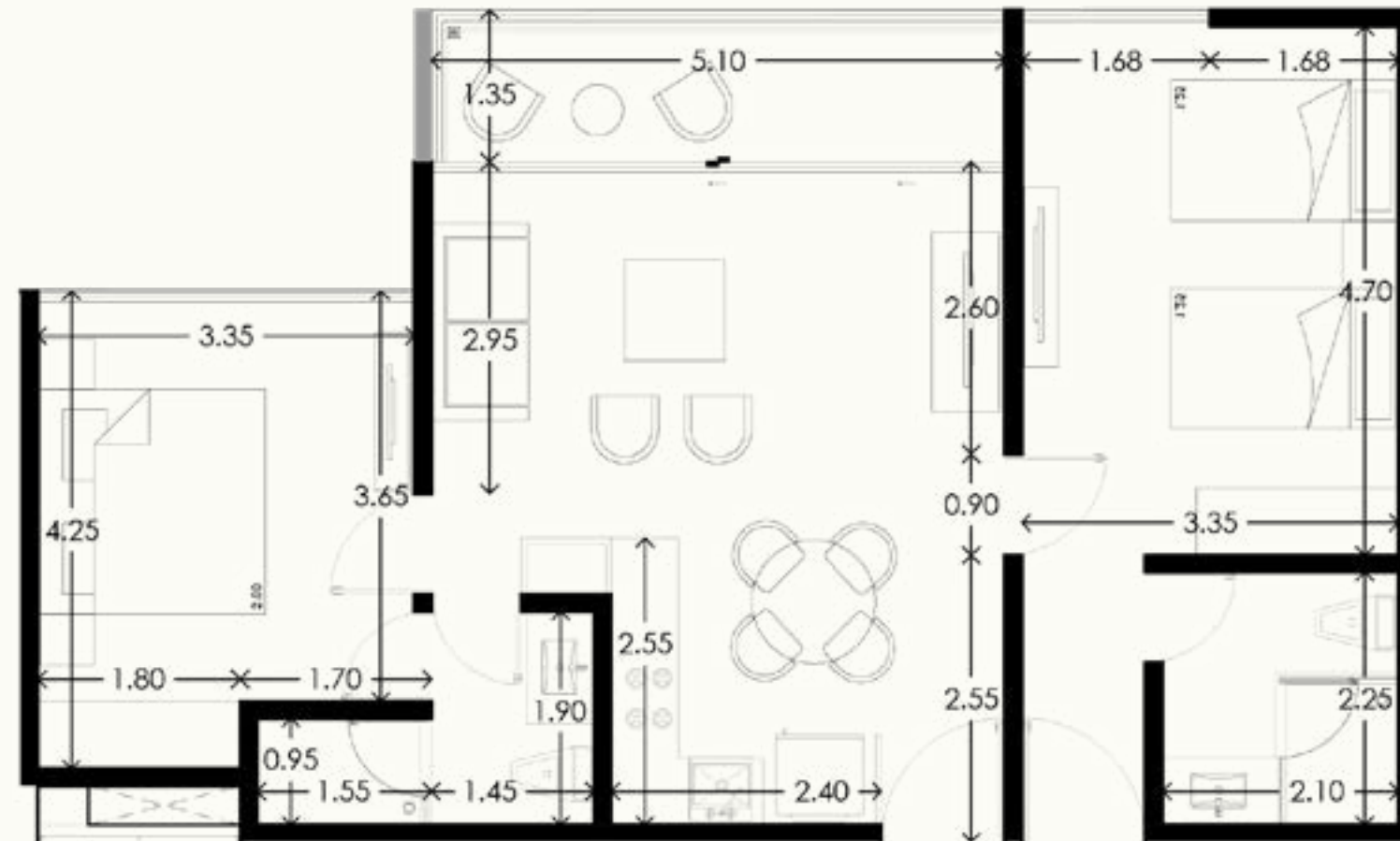
Type Y1 Department



Type Y1 Department

Type	Y1
Bedrooms	2
Bathroom	2
Coverd Terrace	74.05 ft ²
No Coverd Terrace	0 ft ²
Interior surface	755.62 ft ²
Total Surface	829.68 ft ²

Top Floor



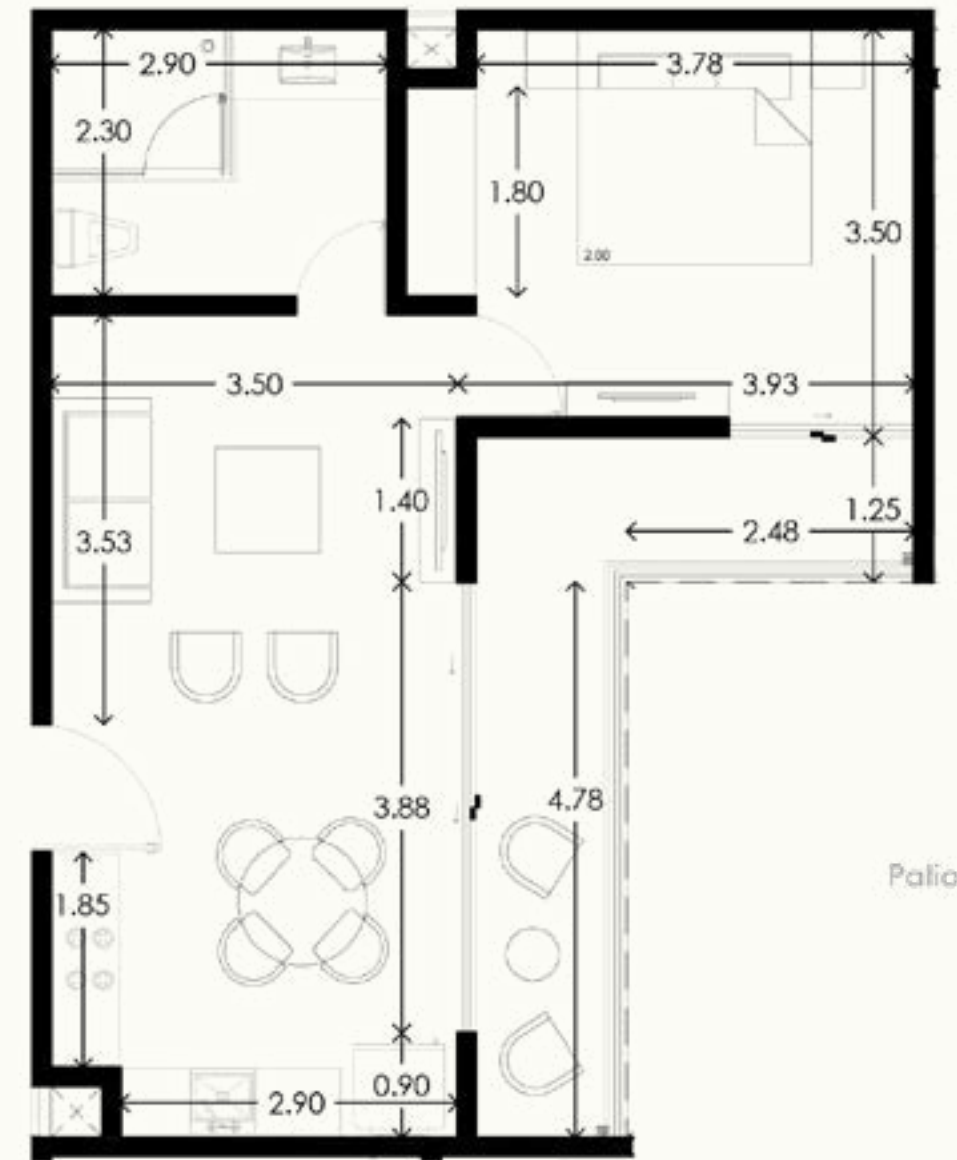
Type Z Department



Type Z Departments

Type	Z
Bedrooms	1
Bathroom	1
Coverd Terrace	117.32 ft ²
No Coverd Terrace	0 ft ²
Interior surface	510.20 ft ²
Total Surface	627.53 ft ²

Top Floor



Type PH-A Department



Low Level

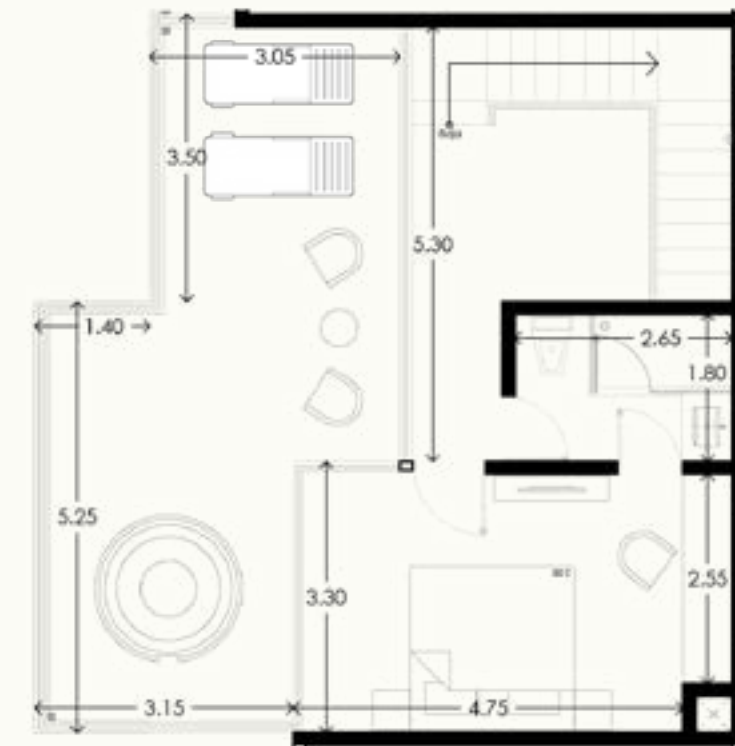
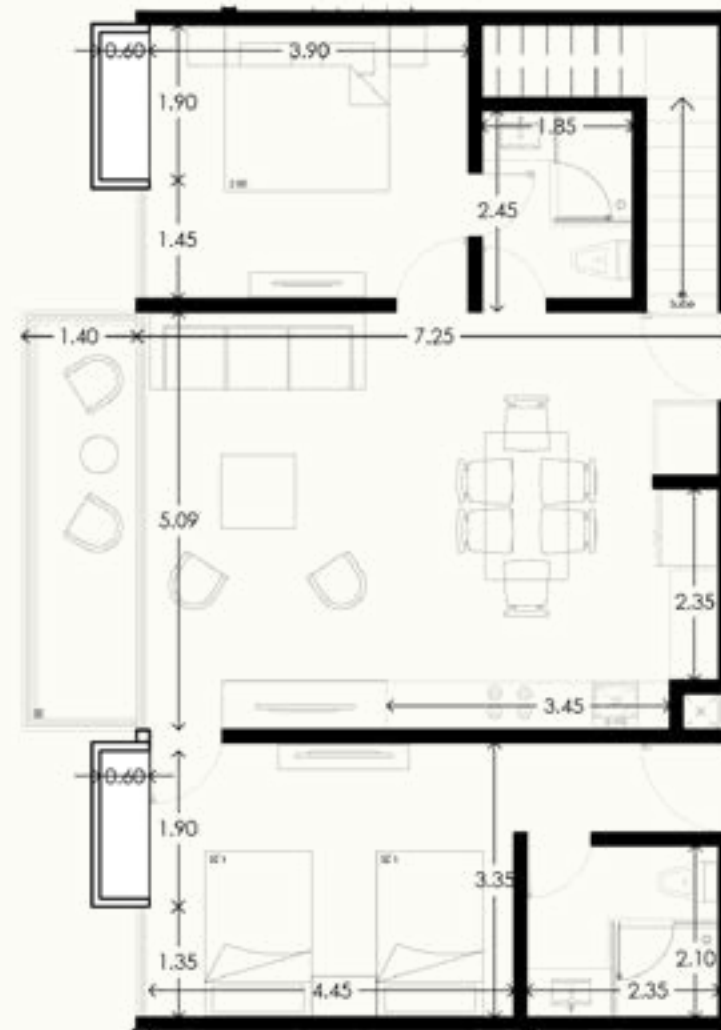


Top Floor

Type PH-A Department

Type	PH-A
Bedrooms	3
Bathroom	3
Coverd Terrace	76.85 ft ²
No Coverd Terrace	316.99 ft ²
Interior surface	1343.33 ft ²
Total Surface	1737.18 ft ²

Top Floor



Type PH-B Department

Low level



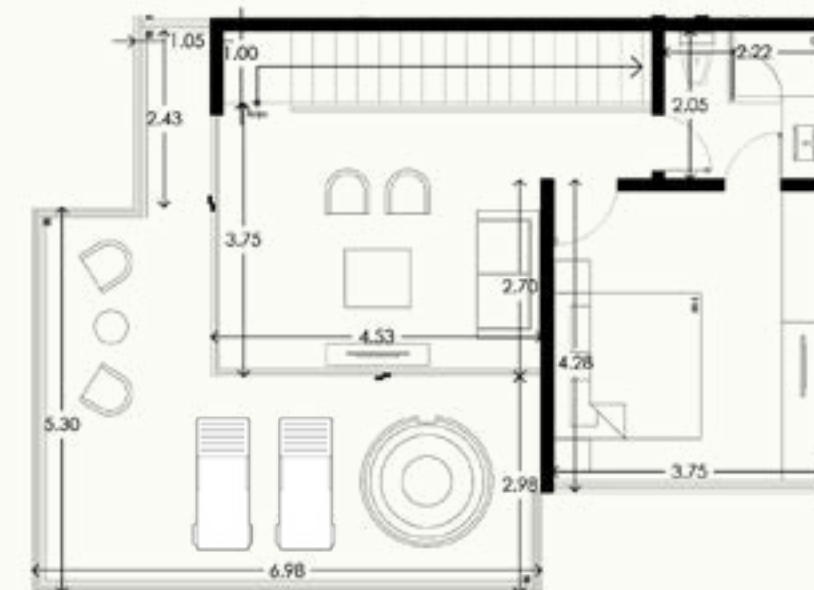
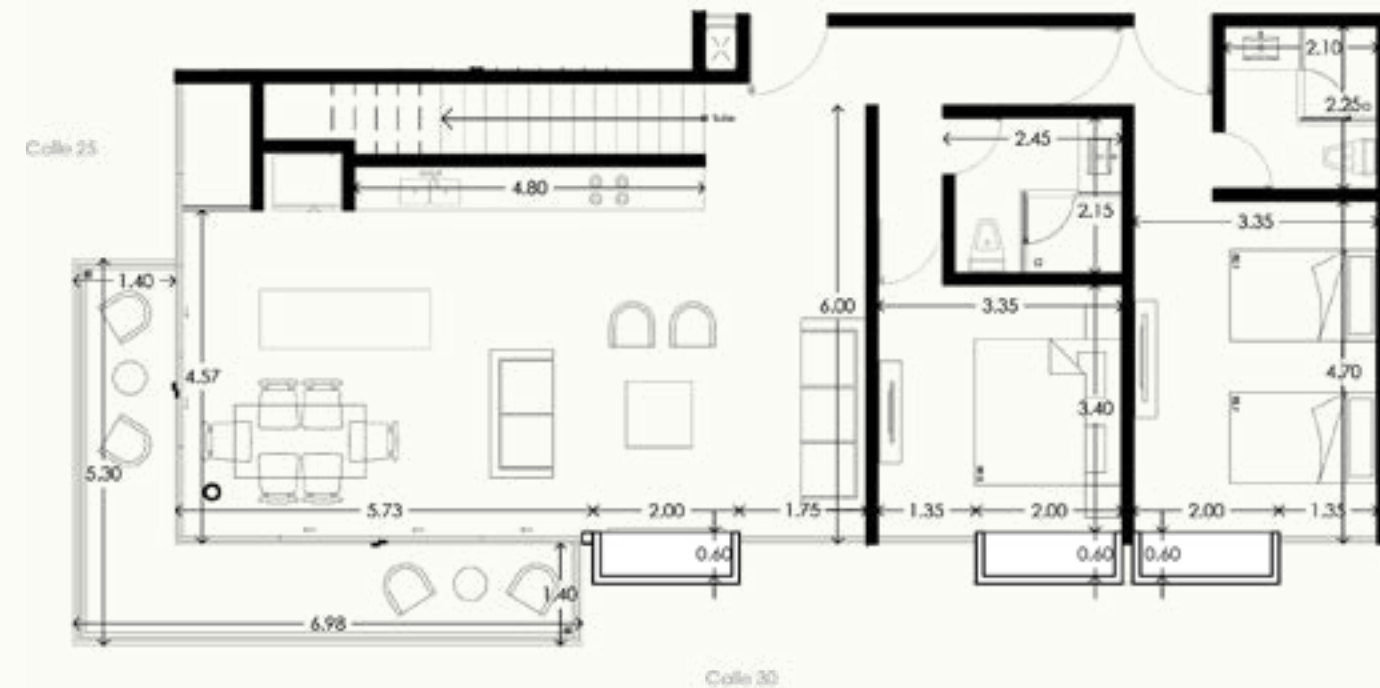
Top Floor



Type PH-B Department

Type	PH-B
Bedrooms	3
Bathroom	3
Coverd Terrace	163.61 ft ²
No Coverd Terrace	313.76 ft ²
Interior surface	1702.85 ft ²
Total Surface	2180.23 ft ²

Top Floor

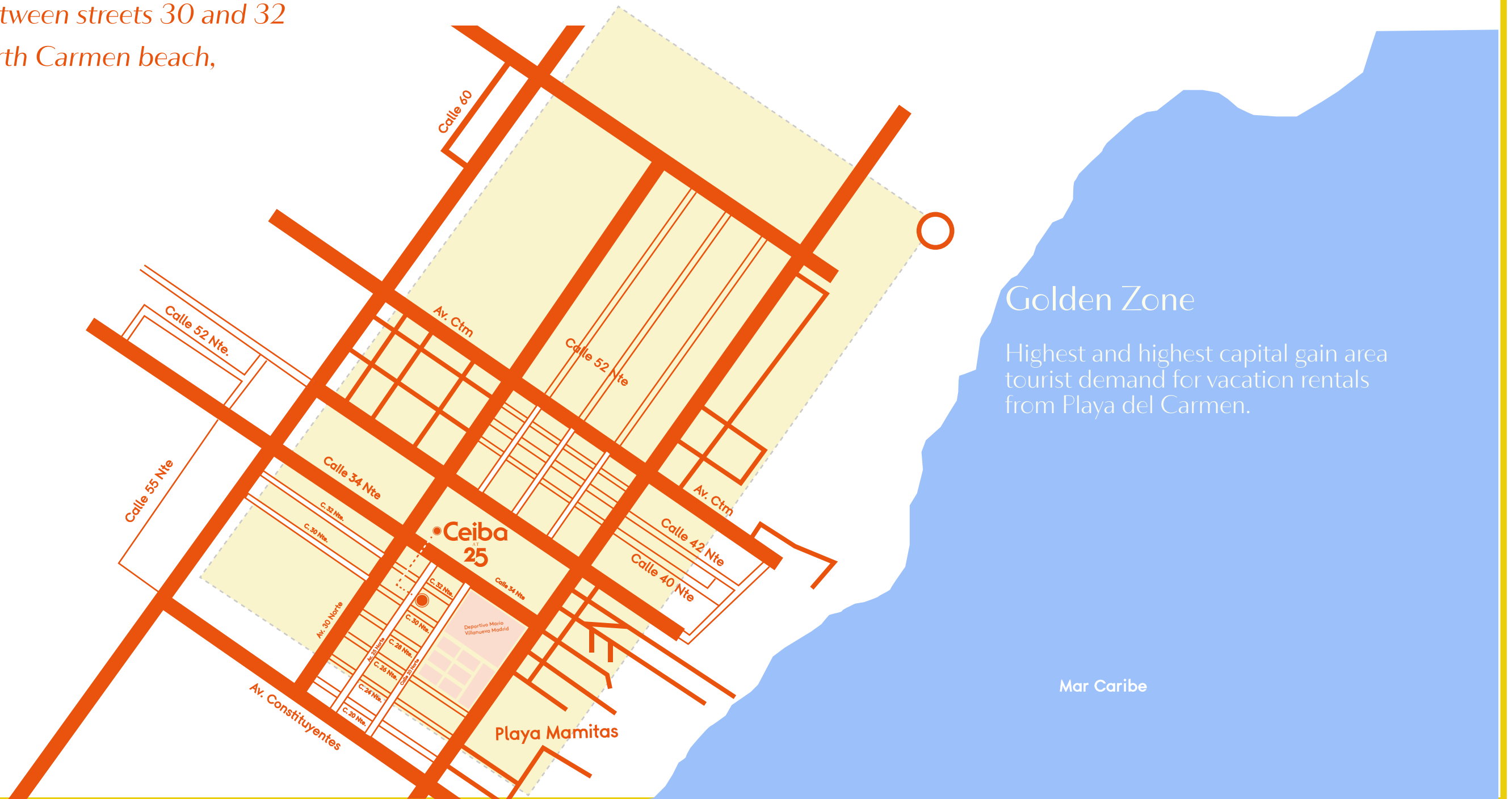


Location



The location is great, the lifestyle you dreamed is in Playa del Carmen. By drawing the curtains in your room you will discover an exceptional natural and cultural setting. Located in the **Golden Zone**, steps from its beaches bathed in white sand, the amazing turquoise waters, and its iconic 5th Avenue, internationally recognized for its gastronomic and commercial diversity.

Av. 25 between streets 30 and 32
North Carmen beach,



Golden Zone

Highest and highest capital gain area
tourist demand for vacation rentals
from Playa del Carmen.

Mar Caribe