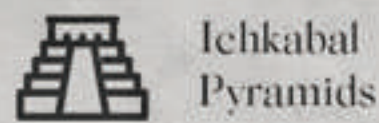


ALDEA **O** MAYAB
BACALAR

The place of the chosen ones



Ichkabal
Pyramids

Bacalar



SAN FELIPE
FORT

PIRATES
CHANNEL

BLACK
CENOTE

BLUE CENOTE

AKALKI HOTEL

HABITAS BACALAR

LAGOON CLUB
RAPIDS

Bacalar means: '**near or surrounded**' by reeds in the Mayan language. It is located between two important cities, near the **Chetumal** airport and 2 hours from the city of **Tulum**.

This population is located between a vast and thick vegetation crowned by an imposing accumulation of turquoise water called: '**The Seven Colors Lagoon**' a jewel that stretches over 42km. This lagoon has shallow water and soft white sand. An Ideal place to inhabit and connect with nature in an atmosphere of tranquility.

Aldea Mayab is located 5 minutes from the center of Bacalar and soon in the passage of the Mayan Train

ALDEA  MAYAB
BACALAR



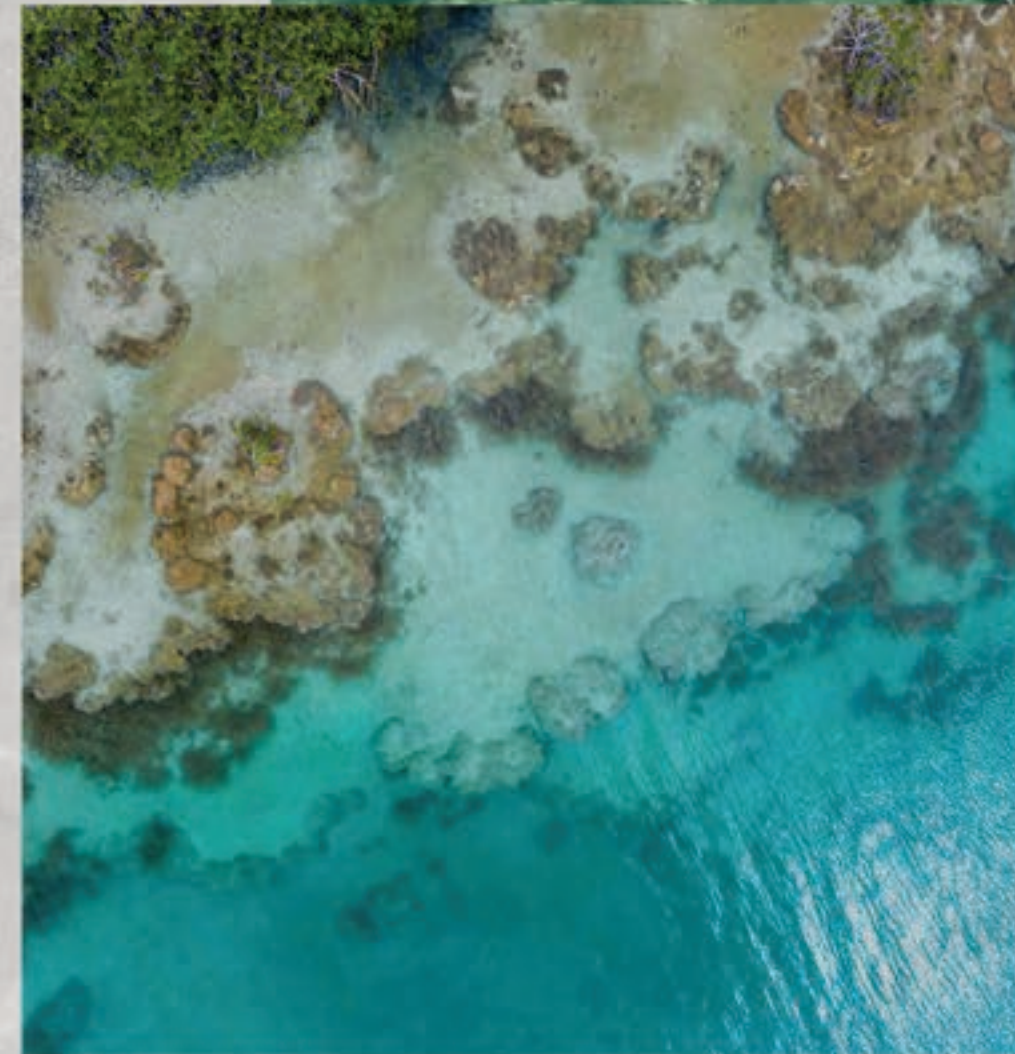
Access View



Access View

ALDEA MAYAB

BACALAR



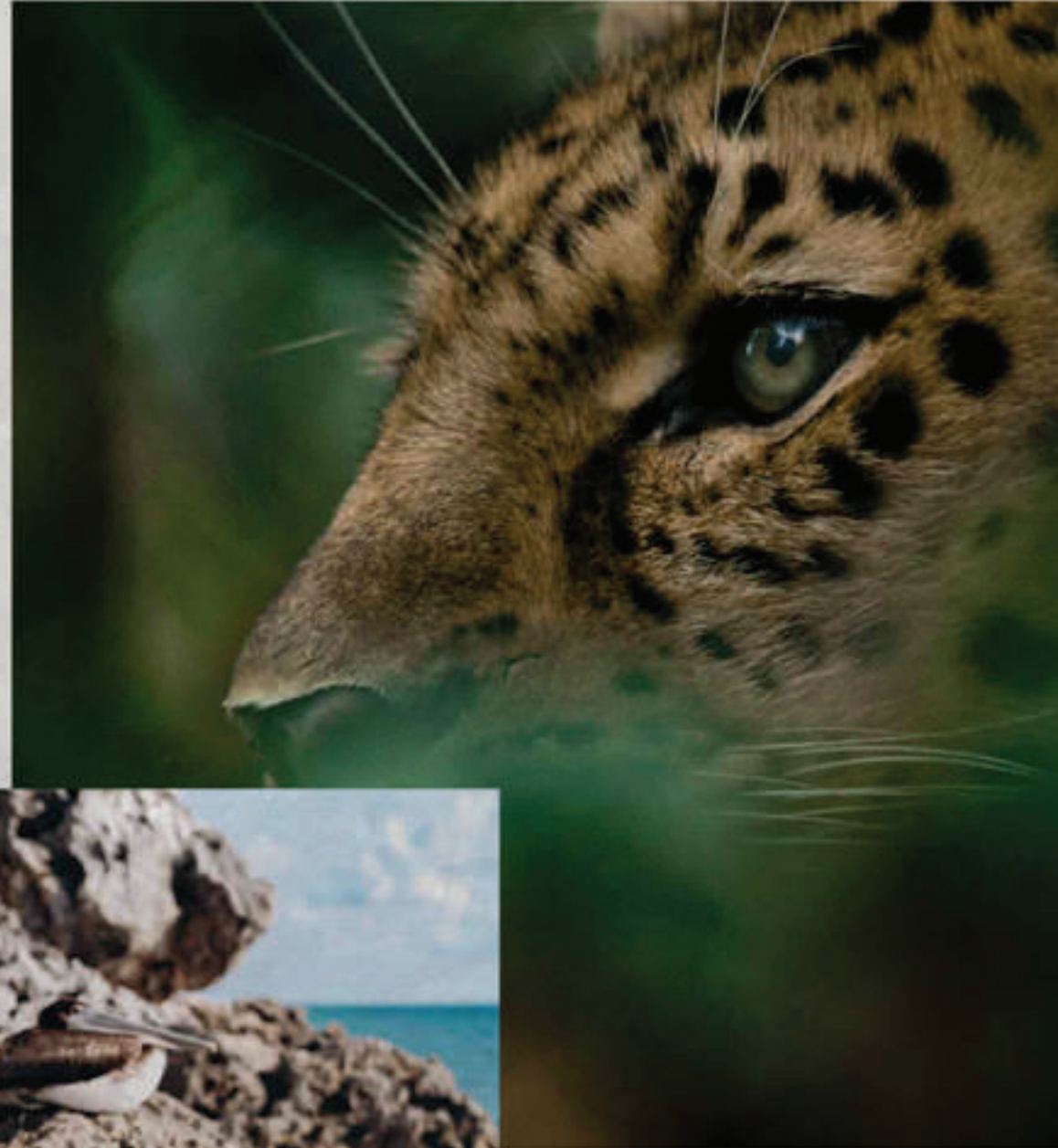
Aldea Mayab is an exclusive residential complex in the shore of the seven colors lagoon of Bacalar. It offers a unique, luxurious and sustainable lifestyle to its residents. It is located within the jungle in an environment that remains untouched, which provides an elite lifestyle.

This development includes 8 hectares of jungle of which 70% will be conserved, in order to maintain the sensibility and sense of protection this project aims for. It will count 8 exclusive zones of 18 apartments each, separated by 20 meters of endemic jungle.

It will also have 4 Luxury Villas and general amenities for the residents to use that complement the experience, atmosphere and identity of our Village.

The land, the water, the sun and the air connect us within the jungle with our inner being, with the senses and our most essential pleasures that form life.

Sustainability



Sustainable housing

Protected ecosystem

Wetland conservation

70% of protector green areas

Water treatment plant

25 meters of vegetation buffer between units

Open air jungle gym



An authentic lifestyle, unique, responsible and respectful of the environment.

Amenities

Amenities



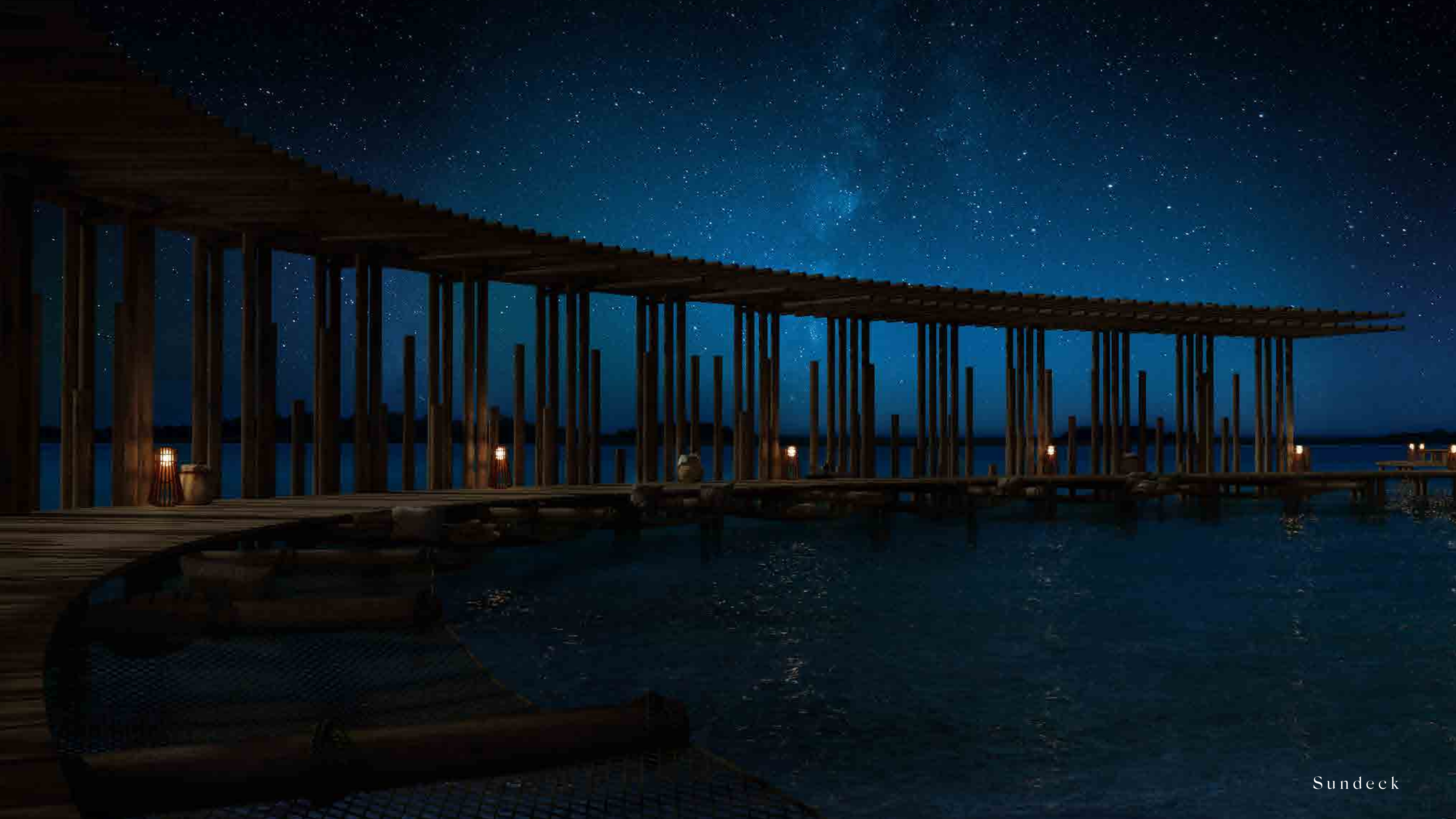
- Jogging Track
- Indoor Gym + Jungle Gym
- Paddle Courts
- Barbecue Zone
- Guardhouse and Controlled Access 24/7
- Lounge area + Loungers
- Kids club
- Club House
- Pool
- Sundeck
- Dock
- Yoga Area
- Lobby
- Bacalar Lagoon
- Fire Pit



Dock View



Sundeck



Sundeck







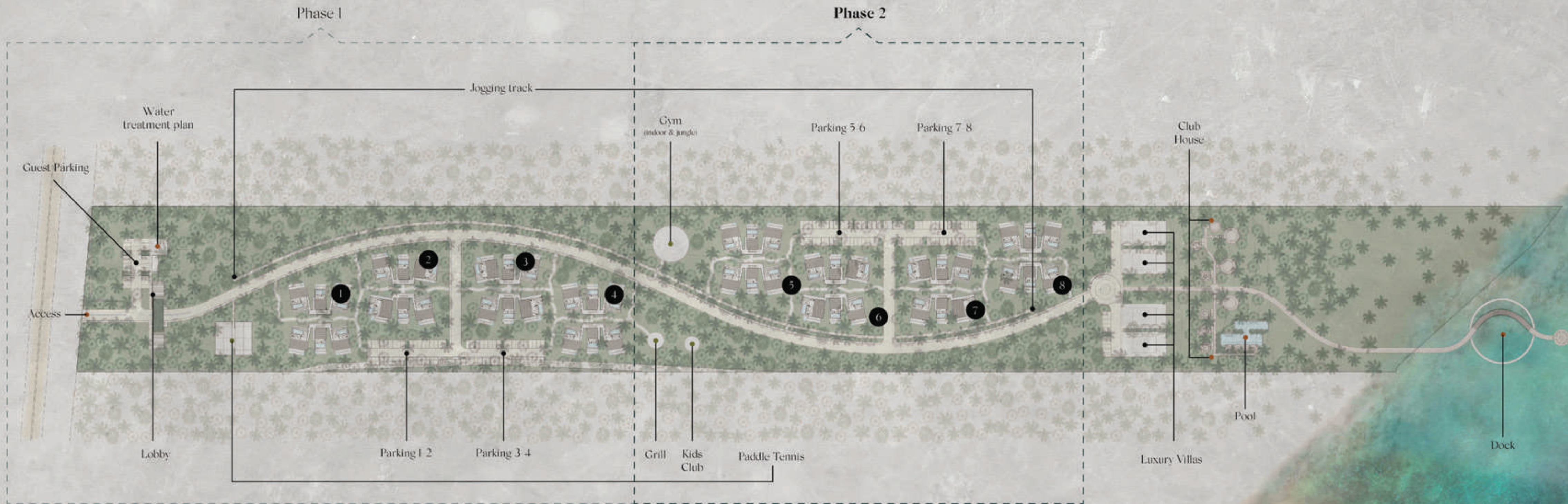




ALDEA MAYAB MASTER PLAN



Approximate preliminary total foundation ground 23.960.13m2 (28.64%)



Exclusive towers of 18 apartments

- ① Chaká
- ③ Yaxché
- ⑤ Jabin
- ⑦ Pich
- ② Chechén
- ④ Balché
- ⑥ Kitanché
- ⑧ Chit

AMENITIES

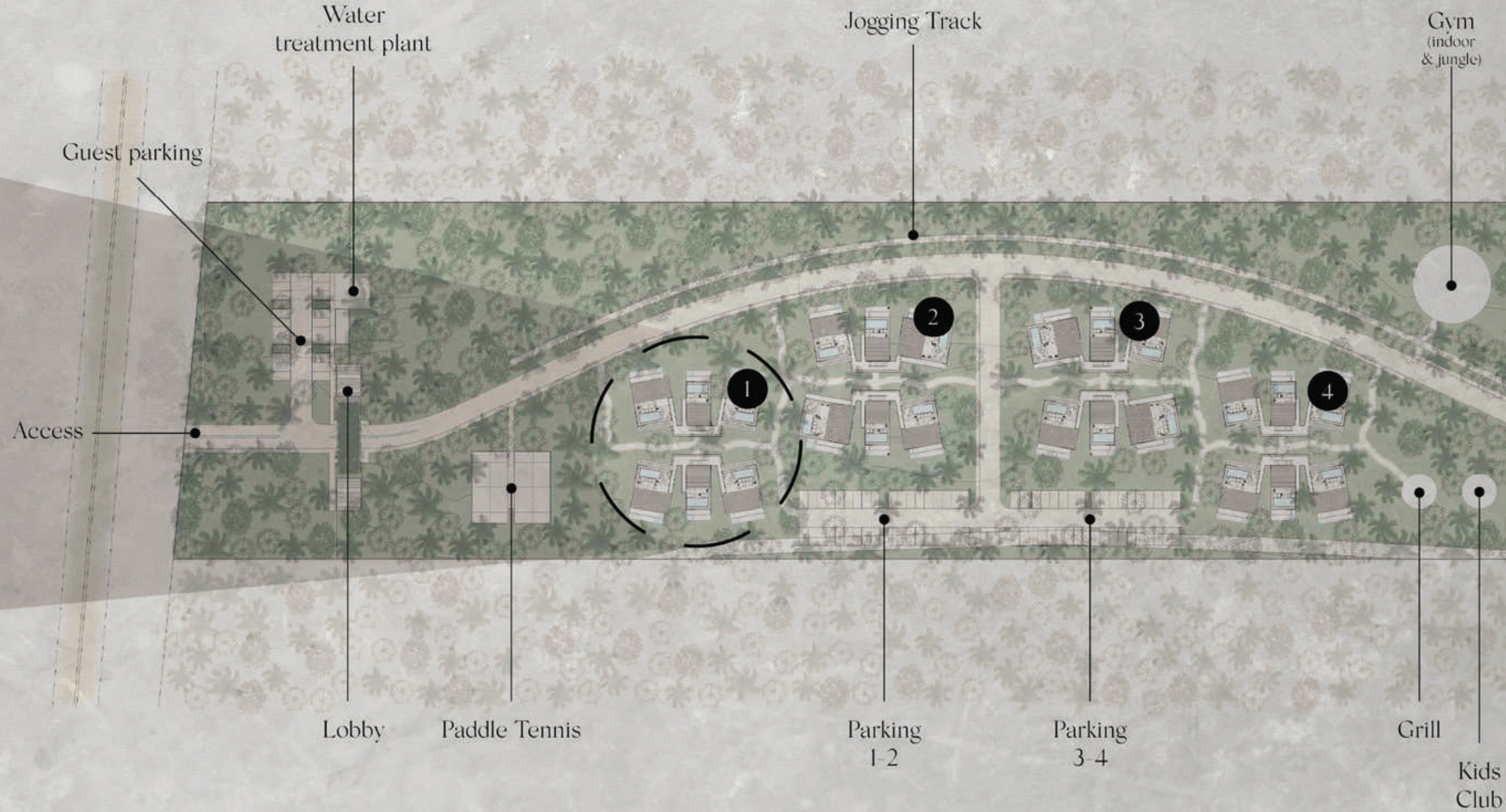
- PHASE 1: Access, Water treatment plant, Dock, Club House, Pool
- PHASE 2: Grill, Kids Club, Paddle Tennis, Gym-Spa

ALDEA MAYAB MASTER PLAN

Approximate preliminary total foundation ground: 23,960.13m² (28.64%)



Facade



PHASE 1

- ① Chaká
- ③ Yaxché
- ② Chechén
- ④ Balché

Exclusive towers of 18 apartments

ALDEA MAYAB MASTER PLAN

Approximate preliminary total foundation ground: 23,960.13m² (28.64%)



PHASE 2 ● 5 Jabin ● 7 Pich ● 6 Kitanché ● 8 Chit

Exclusive towers of 18 apartments

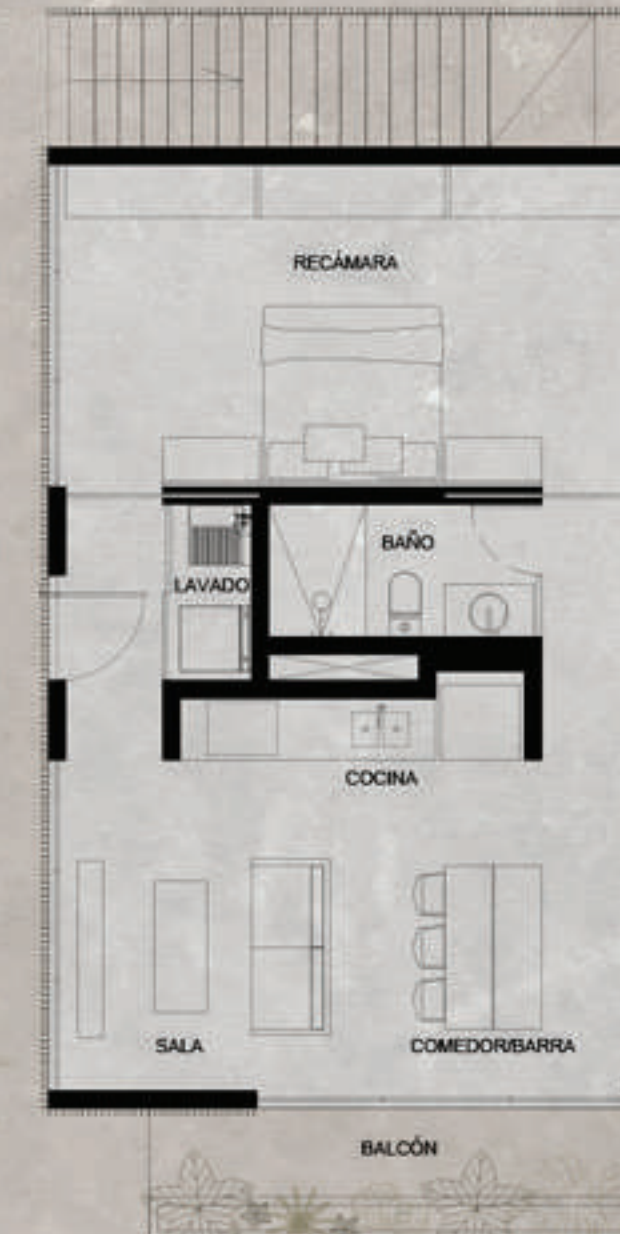
ONE BEDROOM APARTMENTS



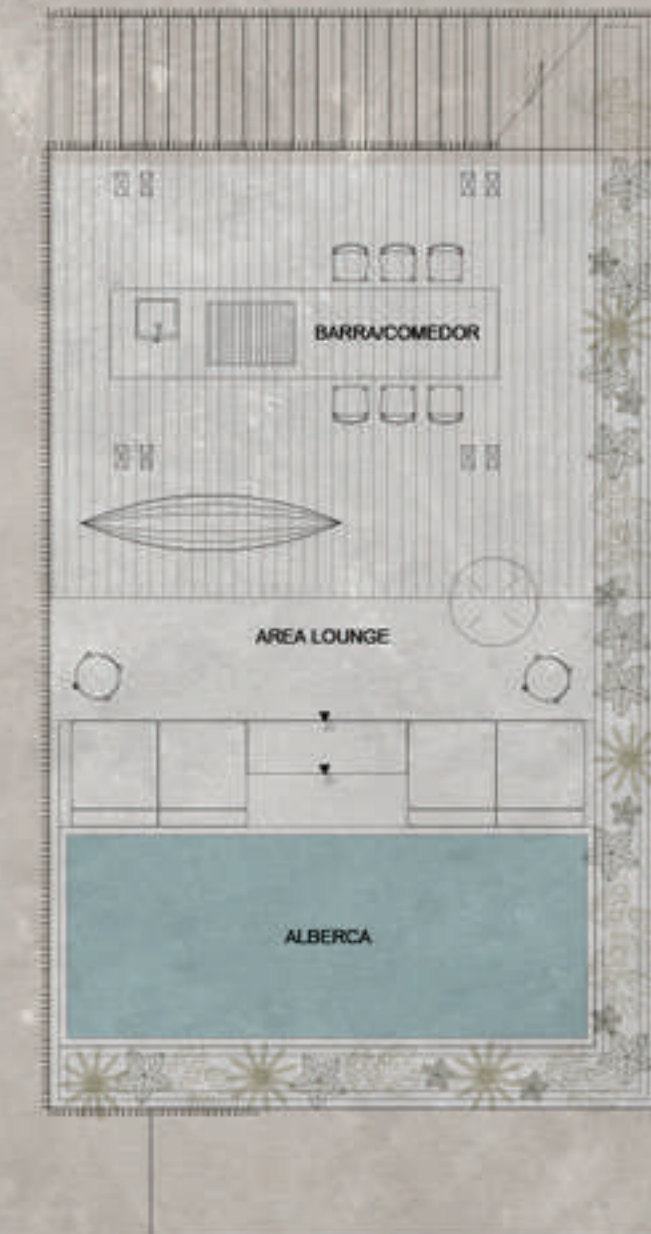
Ground Floor
75.21m² + 20.70 m² terrace



First Floor
75.21m² + 20.70m² terrace



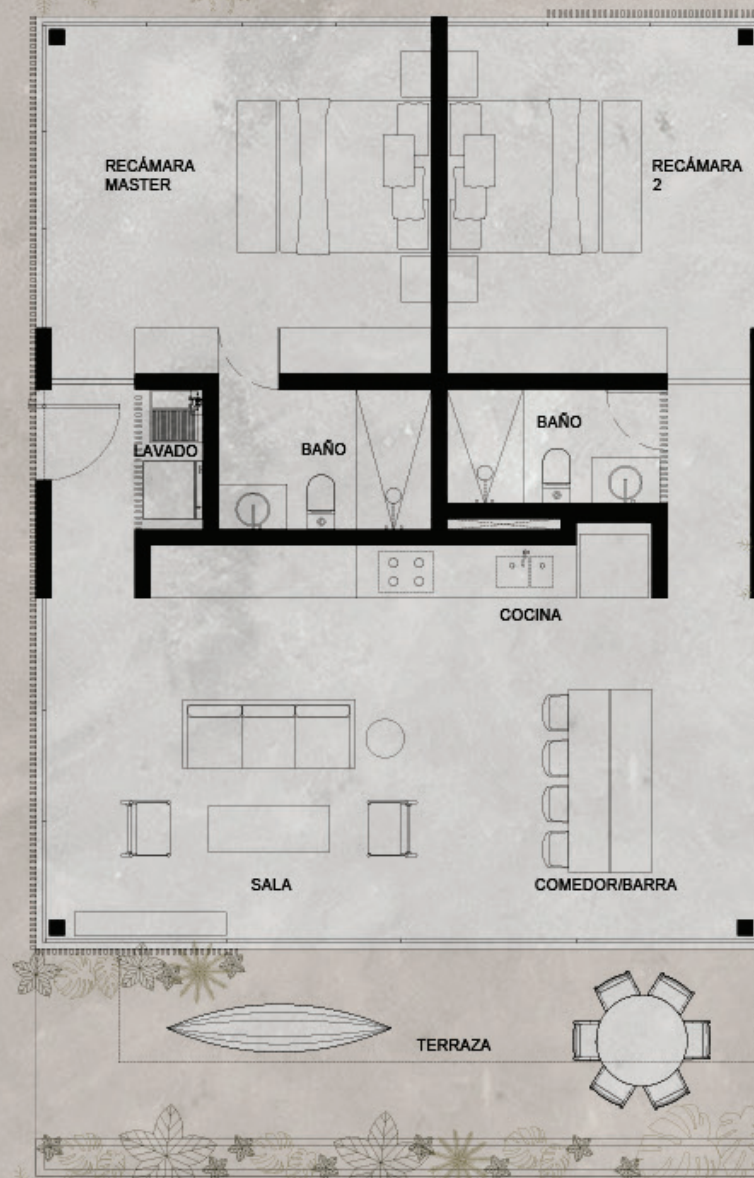
Penthouse (PH)
75.21m² + 8.63m² Balcony
75.21m² Rooftop



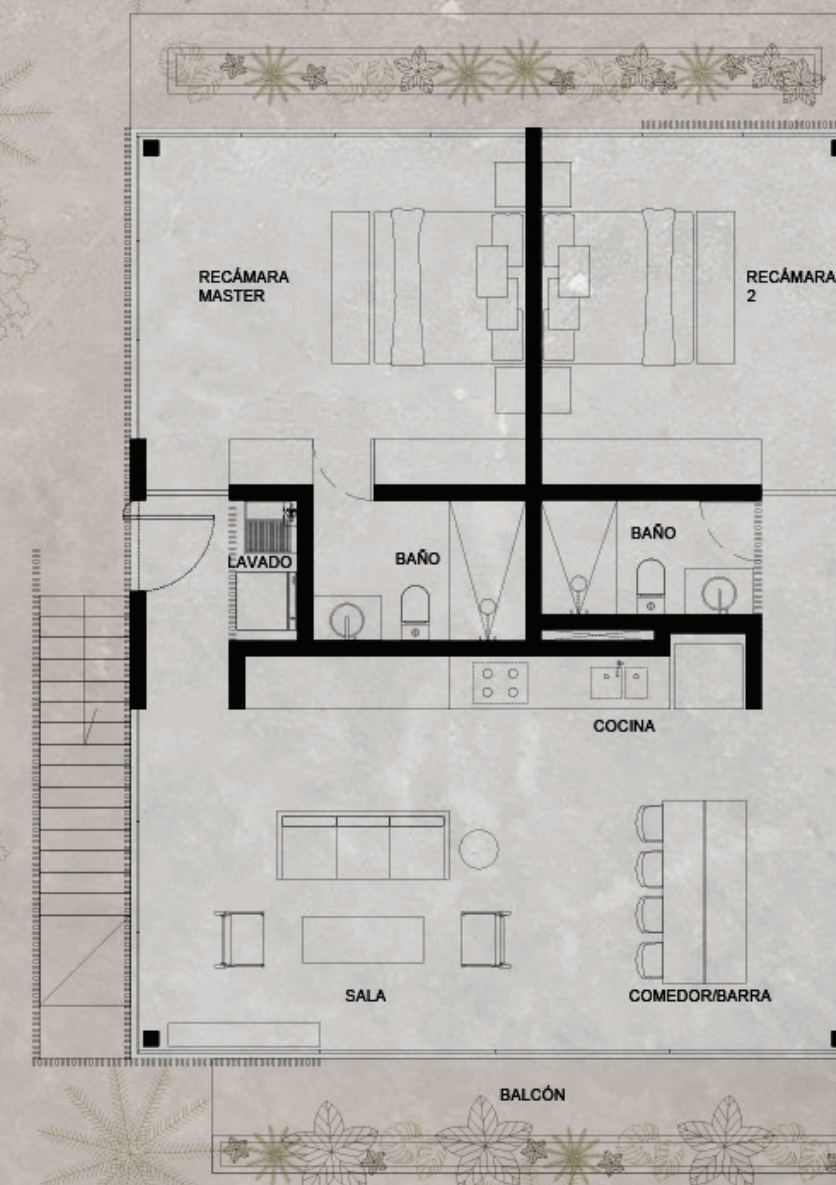
TWO BEDROOM APARTMENTS



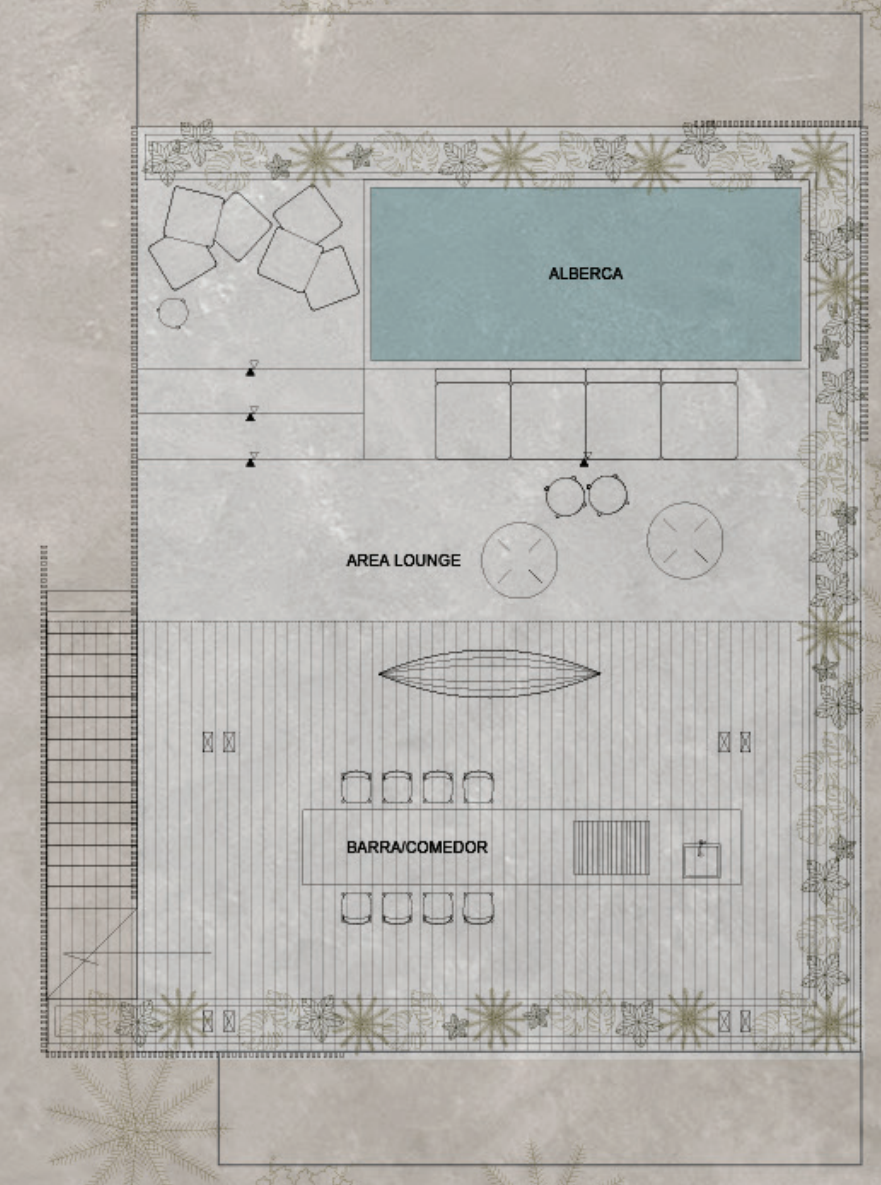
Ground Floor
117.60m² + 28.80m² terrace



First Floor
117.60m² + 28.80m² terrace



Penthouse (PH)
117.60m² + 12.78m² Balcony
117.60m² Rooftop



THREE BEDROOM APARTMENTS



Ground Floor

139.32m² + 26.90m² terrace



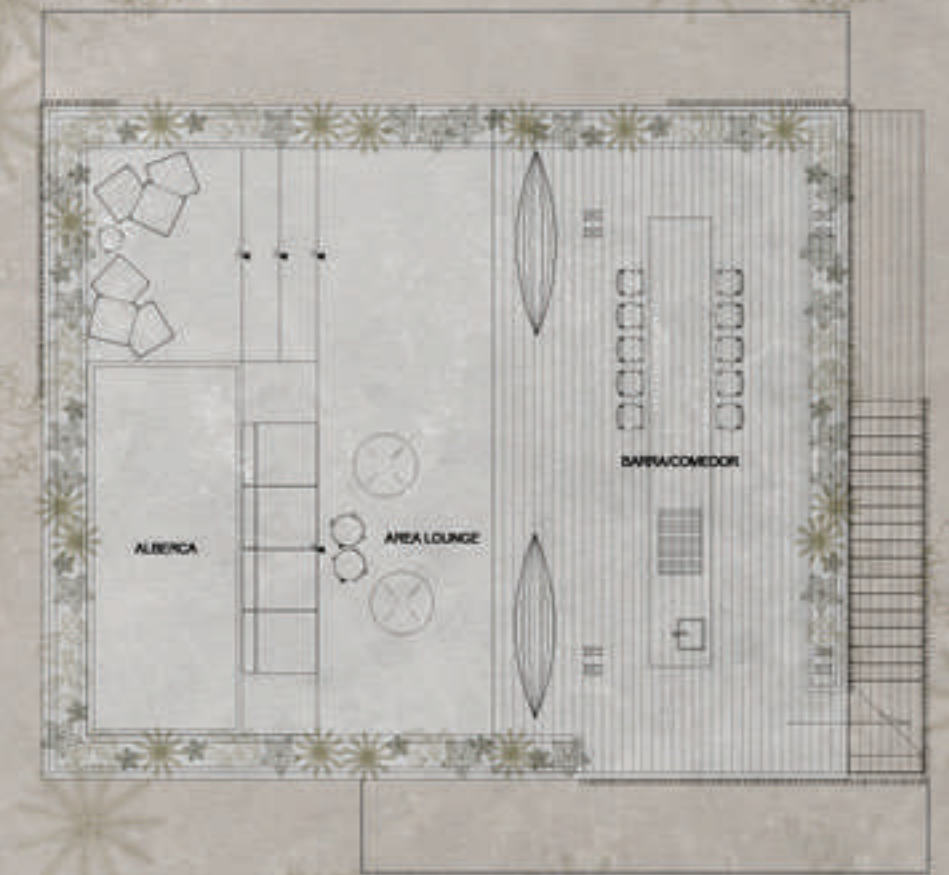
First Floor

139.32m² + 23.40m² terrace



Second Floor

139.32m² + 11.70m² Balcony



Roof Garden

139.32m²



Facade



Terrace - Living room



Bedroom





Lounge pool



Living Room - Kitchen