

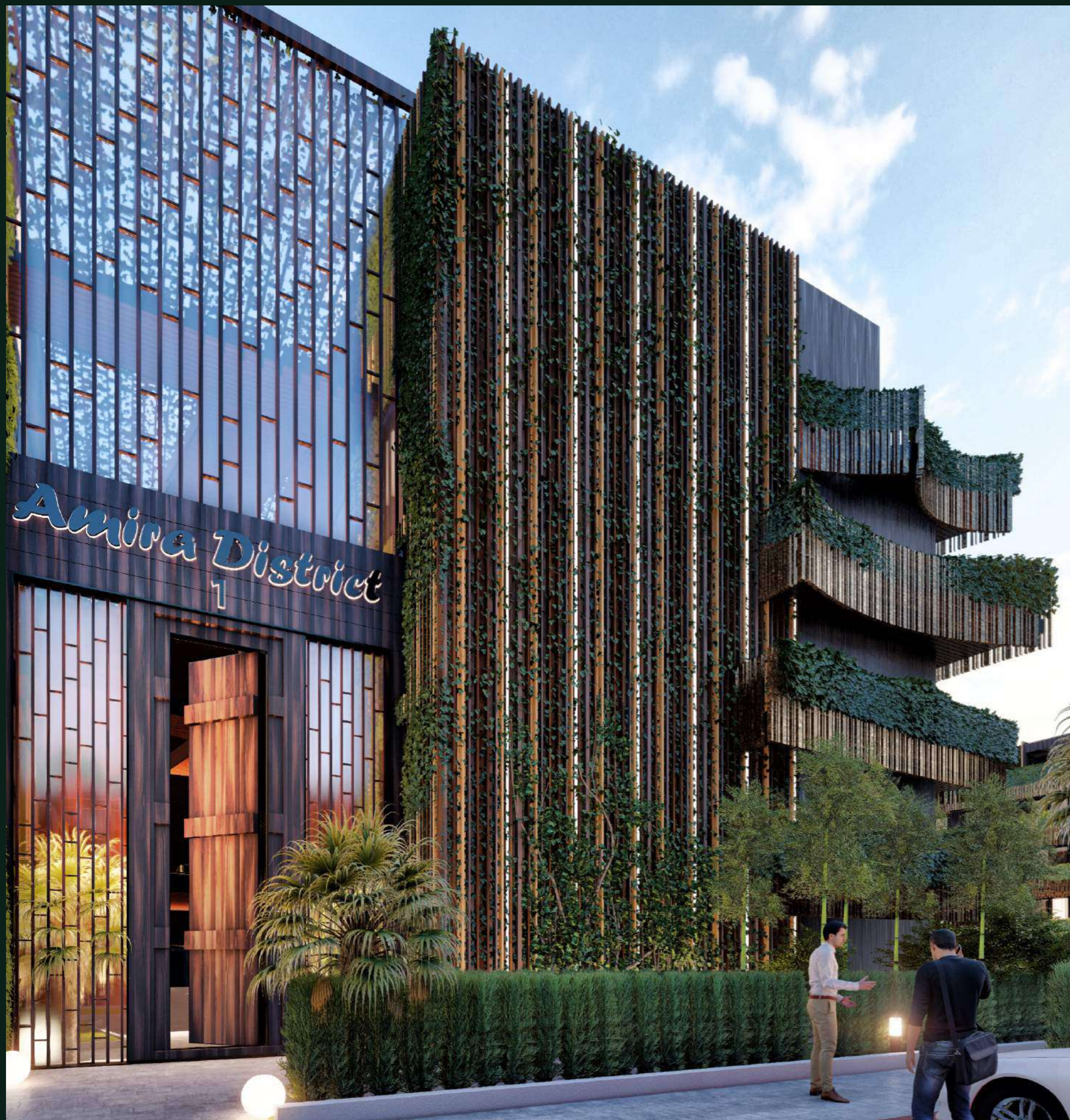


AMIRA DISTRICT

• T U L U M • M E X I C O •

A modern, multi-story building with a facade of vertical wooden slats and lush greenery. The building has a stepped, terraced design with balconies and green roofs. In the foreground, there are palm trees and a paved walkway. A large, semi-transparent green circle is overlaid on the building, containing the text 'WELCOME HOME' in white, bold, sans-serif capital letters. The sky is a clear, light blue, and there are some birds flying in the upper right corner. The overall scene is set during the day, with soft lighting.

**WELCOME
HOME**



INDEX

9 PHILOSOPHY

10 LOCATION

13 PROJECT

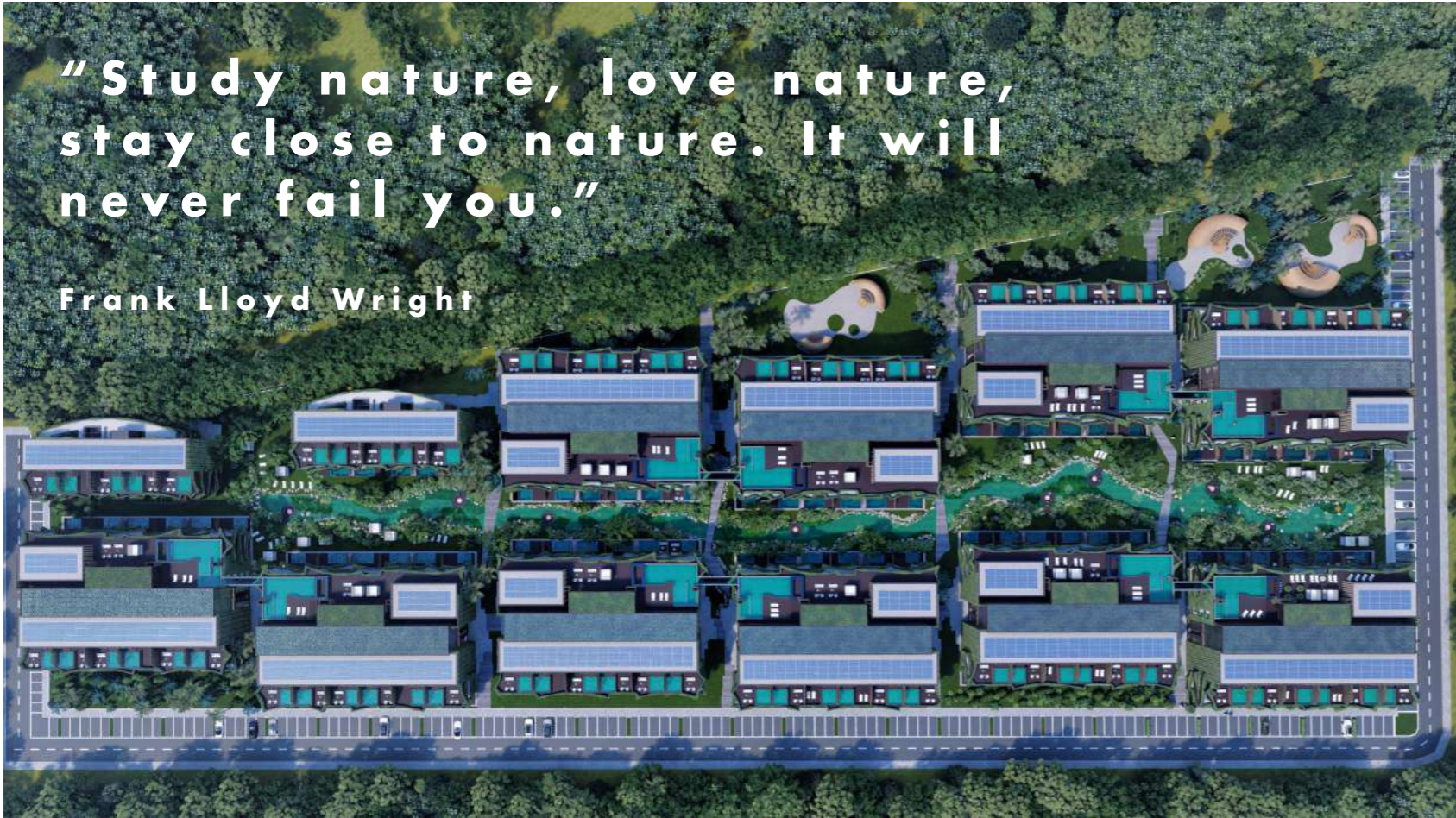
16 ECOLOGY

21 AMENITIES

22 TYPOLOGIES

**"Study nature, love nature,
stay close to nature. It will
never fail you."**

Frank Lloyd Wright



P H I L O S O P H Y

· **Amira District represents a residential complex mostly** surrounded by vegetation and nature with unique sensations through its different experiences.

· **The luxury community spaces are integrated into nature** so the complex offers **jungle gardens, community pools** with connected channels, magical **outdoor spaces, hammock areas** integrated into the river, **multipurpose pavilions** and sports equipment, as well as interconnected rooftop pools, gym / yoga, deck areas, and outdoor parking.

· **"Amira District" bases its design on the communion between the natural environment and a contrasting geometry** with it. **The facade emulates the movement of the waves creating dynamism** and the material of the facade is indigenous bamboo. **The architecture merges with the Nature entering inside the building and going up to the roof top** where the social life of each community is flourishes with its unique experiences such as spa, gym, and "bridge pools".

· **All to achieve a wide vocabulary of visual elements** that mutate into a design language, materials and forms, for a bio-mimicry architecture. The goal was to achieve **a balance between mind-body-soul**, providing a true escape from everyday life, allowing **maximum disconnection and relaxation**.



LOCATION

· Amira District, Tulum, is designed for an **environment of great tourist and scenic value in a natural place in the Yucatan Peninsula** next to the Mexican Caribbean.

· The **area is constantly growing and stands out for its access to beautiful beaches with unique natural landscapes.** The site combines the tranquility of the jungle and the dynamism of the Caribbean Sea.



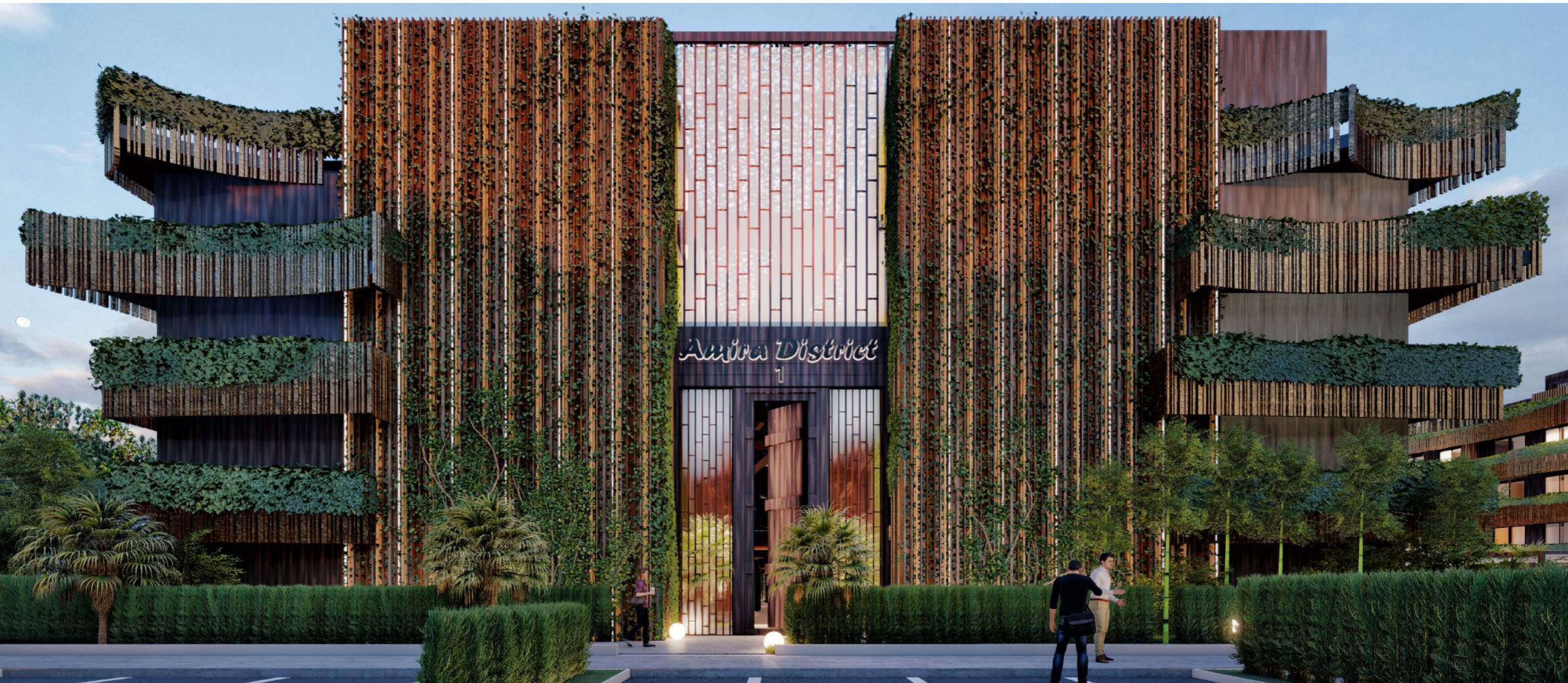


"In nature there are all the future styles."

Auguste Rodin

P R O J E C T

- Amira District in its first stage represents **232 apartments**, to reach **520 apartments in its total project**.
- The ground floor, destined to the location of natural elements and common spaces, provides a **private swim-up** and a **garden** that connects with the central area.
- The **complex represents a private development** that offers membership to the **Giada Group Beach Club** with free transportation, a kindergarten, an artificial river with a central garden, a cafeteria and restaurant, a viewing terrace with suspended pool, gym and spa.
- The set of buildings is arranged in a way that promotes the inclusion of the access spaces in the set of the exterior space, allowing **architecture to be understood as something that could coexist with nature** since ancient times. **A mimetism with the forms of nature is searched from the exterior**, so that **everything comes as a whole**, offering to the complex its own dynamism of the movement of the trees with the wind.



ECOLOGY

· Emphasis is placed on the **concept of sustainability respecting the ecosystem and biodiversity**, contributing to the usage of natural materials that minimize the impact of construction and generation of waste.

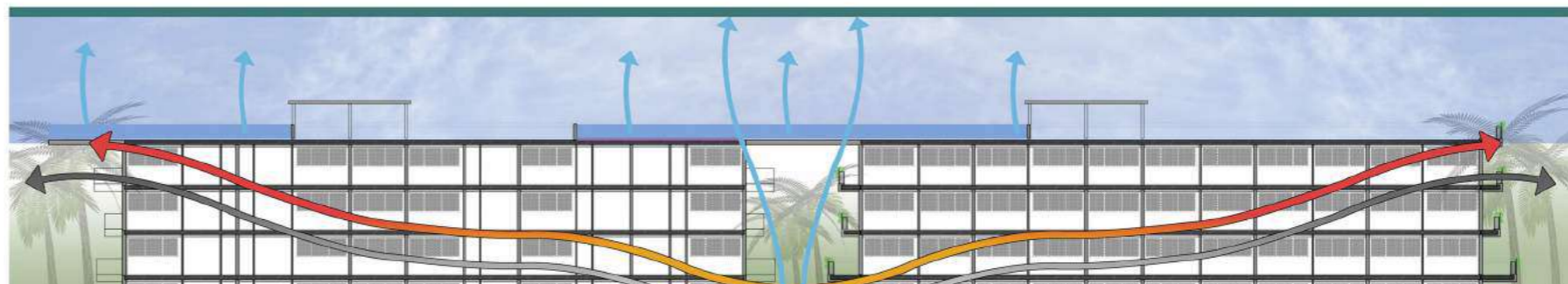
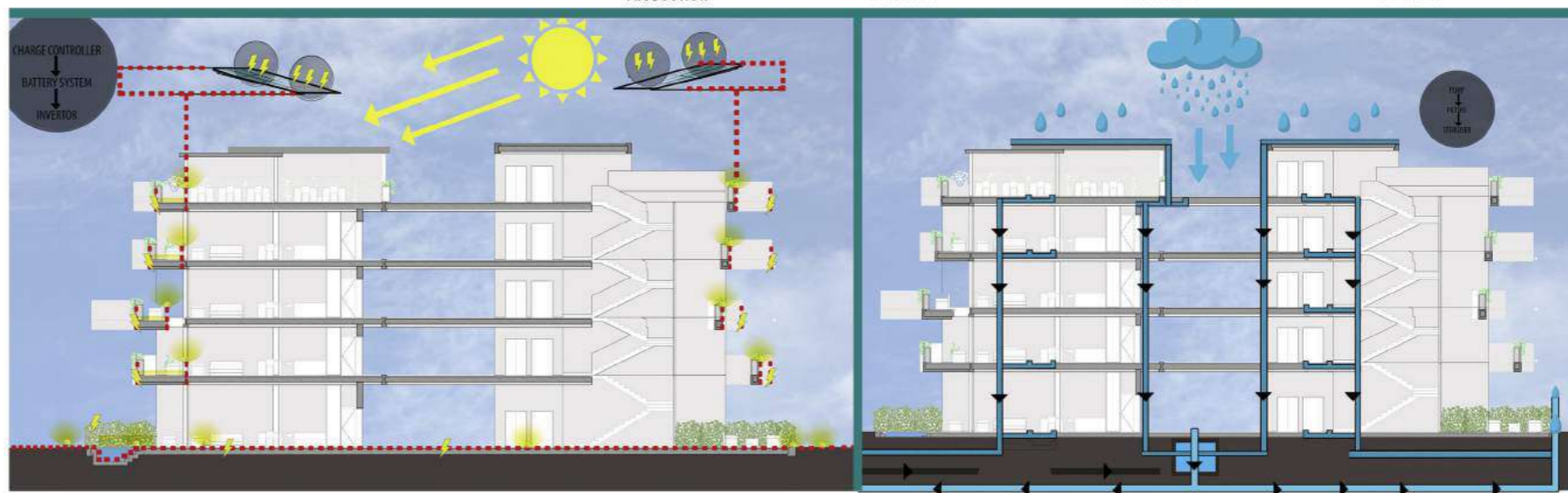
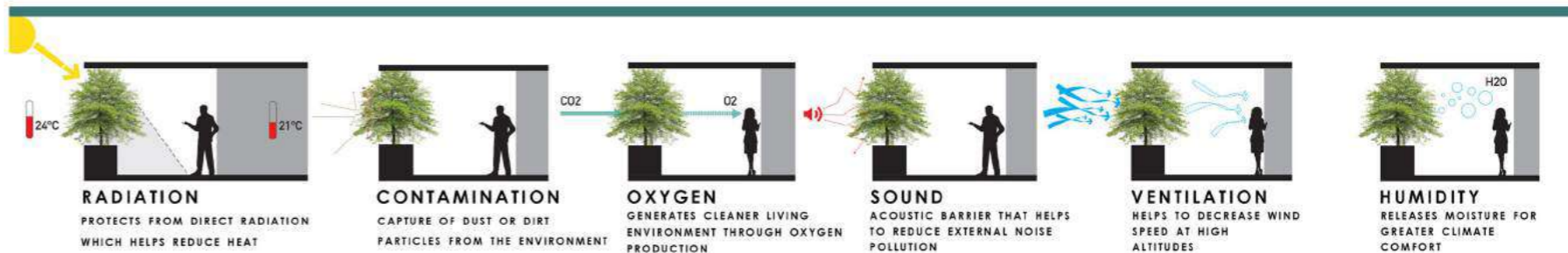
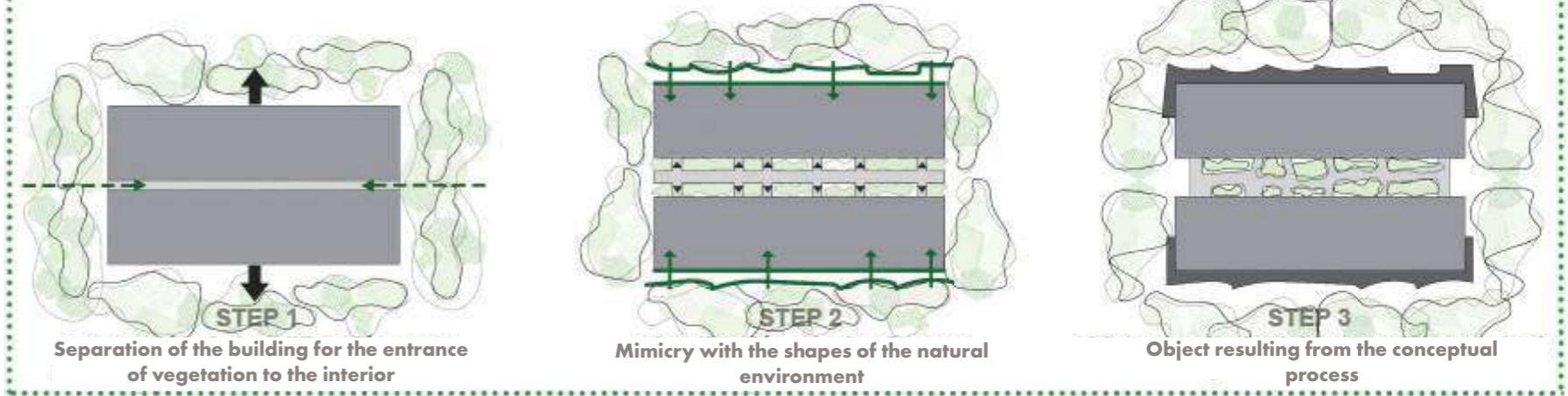
· **The concept of water harvesting** is also respected and represents a **recovery of rainwater for wastewater treatment**.

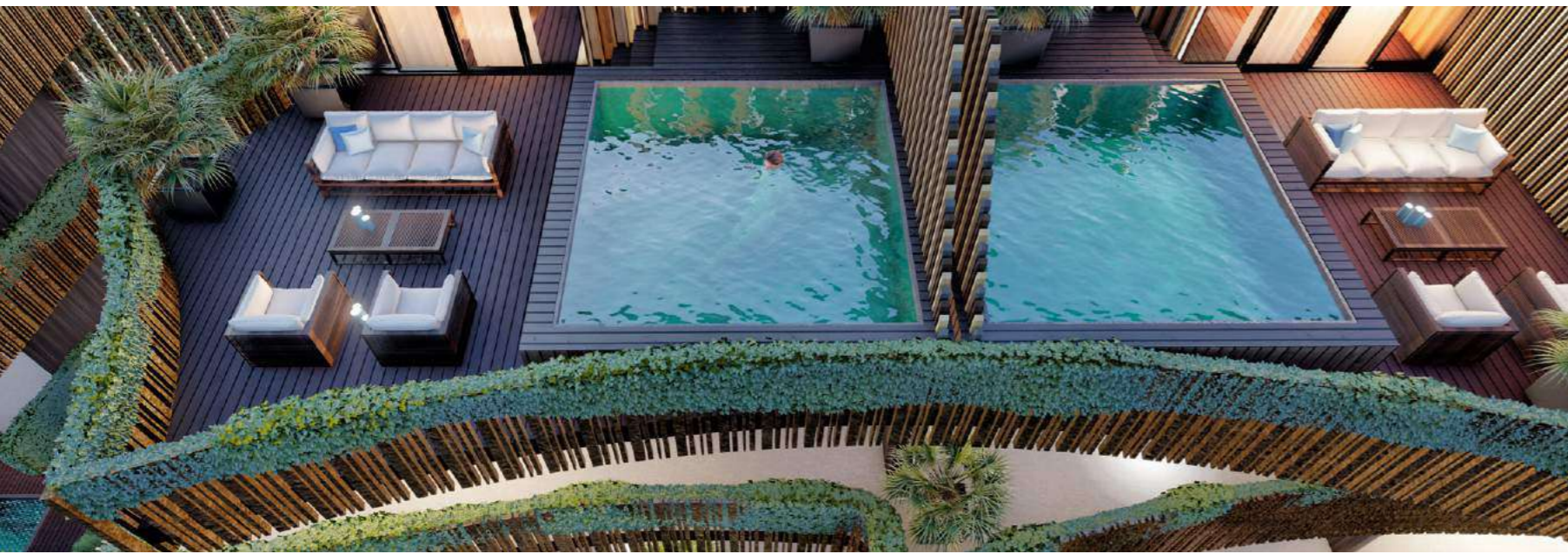
· **Solar panels will be implemented** to achieve **sustainable electricity**.

· **The wall insulation system** and the **double-pane PVC windows** will be integrated.

· Finally, **the "dry" construction system is used**, so as there are no wet binders, **the execution time is shorter, safer and more sustainable**.

BUILDING SCALE





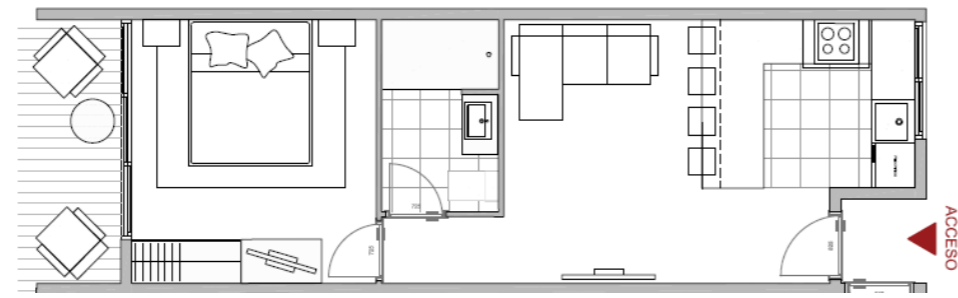


A M E N I T I E S

• **The common areas and services add value** to staying in a complex of this level. **The site, the design and the service are the elements that can make you enjoy a dream place to spend your days.**

Common areas and services:

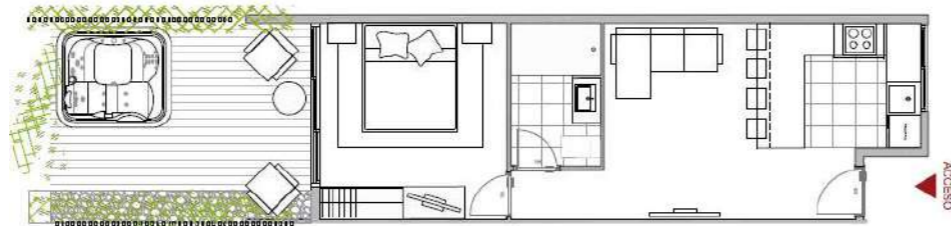
- **Access areas integrated into nature**
- **Indoor gym area**
- **Pools on deck** with connecting corridors
- **Ground-level pools** integrated into nature
- **Multipurpose pavilions**
- **Outdoor areas for being in an environment endowed with native vegetation and spectacular views**
- Provision of numerous **parking spaces**



1 Bedroom



2 Bedrooms



1 Bedroom with Garden



Penthouse 3 Bedrooms



2 Bedrooms Swim Up