



JATSAHA



PLAYA DEL CARMEN BEGAN AS A SMALL FISHING VILLAGE THAT HAS QUICKLY BECOME WORLD FAMOUS FOR ITS FREE SPIRITED PEOPLE, CASUAL LIVING, ITS WHITE SANDY BEACHES AND TURQUOIS WATERS, "PLAYA" IS A NATURAL PARADISE. "MODERN LIVING MEETS ANCIENT CULTURE" IS THE BEST WAY TO DESCRIBE JATSA HA DESIGN. BUILT WITH REGIONAL MATERIALS AND A CLEAN, ELEGANT STYLE THAT ALLOWS NATURAL LIGHT TO SHINE THROUGH EVERY CORNER.

RIVIERA MAYA

HERE IS WHY JATSA HA RESIDENCES HAVE IT ALL.

LOCATION | EQUIPMENT RETURN ON INVESTMENT.

Great location, only 2 blocks away from the famous FIFTH AVENUE..

Smart investing: Airbnb ready.
Vacation Rentals .

Studios, Apartments & Lofts
50 to 90mts²

Fully Furnished and Equipped.

Modern & Functional Design with Regional
Materials.

Convenient and Cost Efficient.

Bluetooth Control of Air Conditioning, Audio
System and Lighting.

First Level Amenities: Roof Top with Pool, BBQ
Area, Fire Pits, Wet Hammock Area, Sky Bar,
Jaccuzi.

The Best Value for your Money, excellent price
per square meter.



Playa del Carmen



- Location -

“Location is everything” Jatsa Ha Residences are located in the heart of downtown Playa, just two blocks from the famous 5thAve. and 4 minute walk to the Caribbean sea. A really nice area full of shops and restaurants. Be one of the lucky owners.

Mar Caribe



JATSA HA
RESIDENCIAL



 JATSA HA



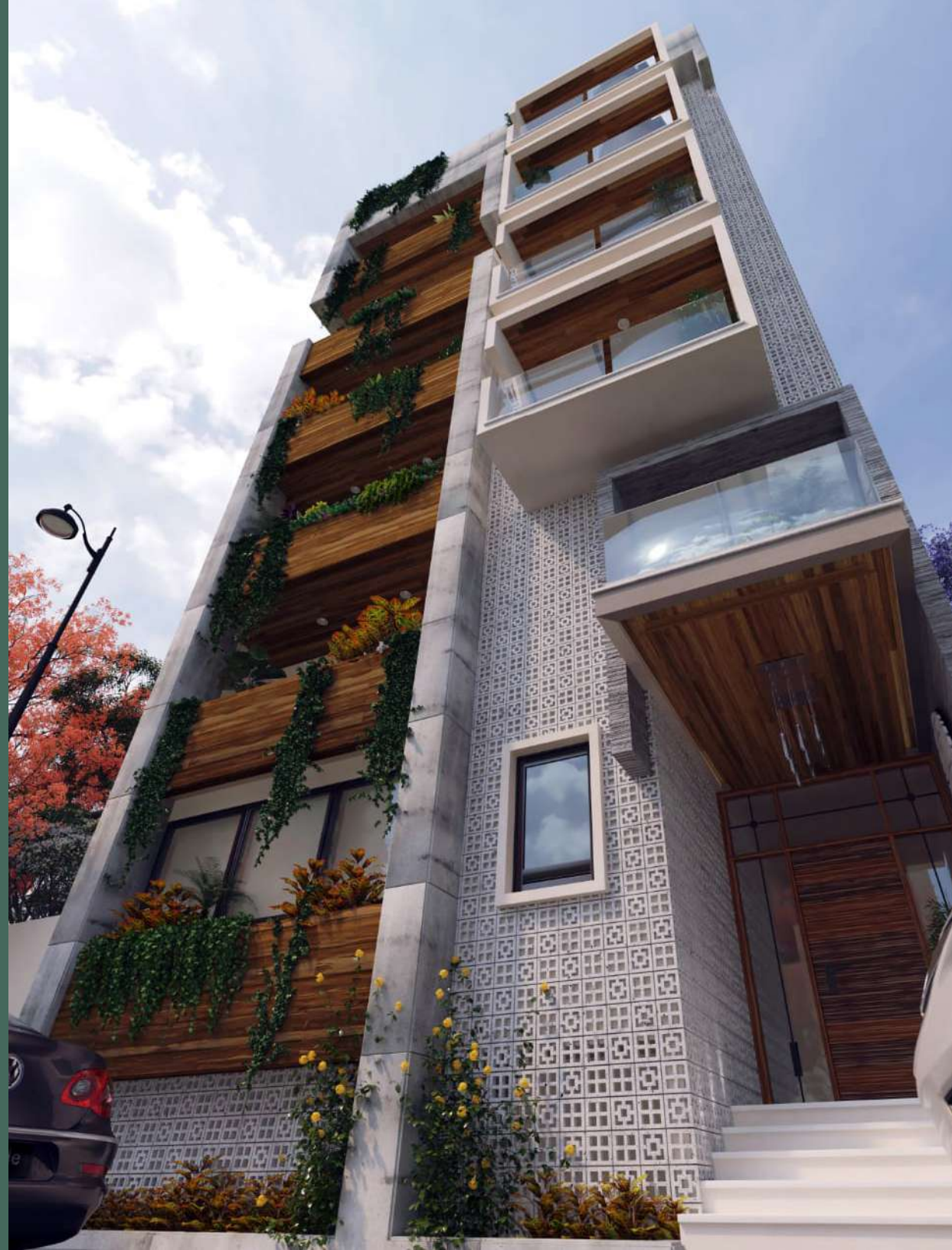
We have created a unique and practical design, perfect for entertaining guests or to simply kick back in what is the epitome of relaxed living. From private balconies to elegantly designed living spaces, your home becomes its own showcase, leaving behind typical apartment designs.



FAÇADE

Bold yet attractive with very low maintenance. Elegant & atemporal. We incorporate ancient regional materials, resistant to weathering and passage of time.

- Controlled access 24 hrs.
- Reception and concierge service.
- Water softener.
- Security cameras.
- Handmade cement lattice.
- Walls of sealed apparent concrete.
- Tempered glass.
- Stainless steel ironwork.
- Indirect led ambient lighting.
- Ornamental vegetation.





APARTMENTS

Timeless design that incorporates iconic architectural elements of the region such as pasta tiles, Chukum walls and other regional techniques make Jatsa Ha unique.

- Kitchen countertop in granite or quartz.
- Abundant outdoor vegetation.
- Smart centralized, bluetooth control make everything easier. (air conditioner, audio and lighting)

- Furniture included.
- Ambient led light.
- High quality aluminum sliding doors.
- Rails in tempered glass.
- Stainless steel ironwork.
- Chromed stainless steel faucet.
- Large balconies.

BATHROOMS

Our bathroom will make you feel as though you are in a presidential suite, with beautiful wood paneling and a walk-in closet. .

- Walk-in closet natural wood.
- Built-in led light.
- Stainless steel faucet.
- Double sinks.
- Ceramic WC.
- Double rain shower from the ceiling.
- Chukum walls (Ancestral finish that incorporates tree resin used in Mayan construction).
- Shower wall in artisan pasta tiles.
- Porcelain floor.
- Mirrors with indirect light.
- Natural lighting and ventilation.
- Tempered glass doors.





Amenities

We offer an exclusive and privileged lifestyle.

ROOFTOP POOL
SKY BAR
FIRE PIT
BIKES LOAN

BEACH CLUB ACCESS
JACUZZI & RELAX
BARBECUE & GRILL
LAUNDRY FACILITIES



Practical Amenities along with exceptional location makes all the difference. The roof top terrace is an ideal escape for sun-drenched days and star filled nights. An intimate setting, fully equipped and is inviting for any small family to own and enjoy.

LOFT A

- Ground floor: 46.75m² (503.20 sq.ft)
- Upper floor: 37.15m² (399.90 sq.ft)
- Terrace: 10.60m² (114.10 sq.ft)
- Total: **94.50m²** (1,017.20 sq.ft)

WITH THE FOLLOWING SPACES:

- 1 Bedroom.
- 2 Walk-in closets.
- 2 Full Bathrooms.
- Dinning room.
- Kitchen.
- TV room.
- Jacuzzi.
- Terrace.
- Smart Unit.
- Bluetooth Control of air conditioning, audio system and lighting.
- Smart entrance.
- Furnished & Equipped.





GROUND FLOOR



UPPER FLOOR

LOFT B

- Ground floor: 43.90m² (472.55 sq.ft)
- Upper floor: 33.90m² (364.90 sq.ft)
- Terrace: 10.60m² (114.10 sq.ft)
- Total: **88.40m²** (951.55 sq.ft)

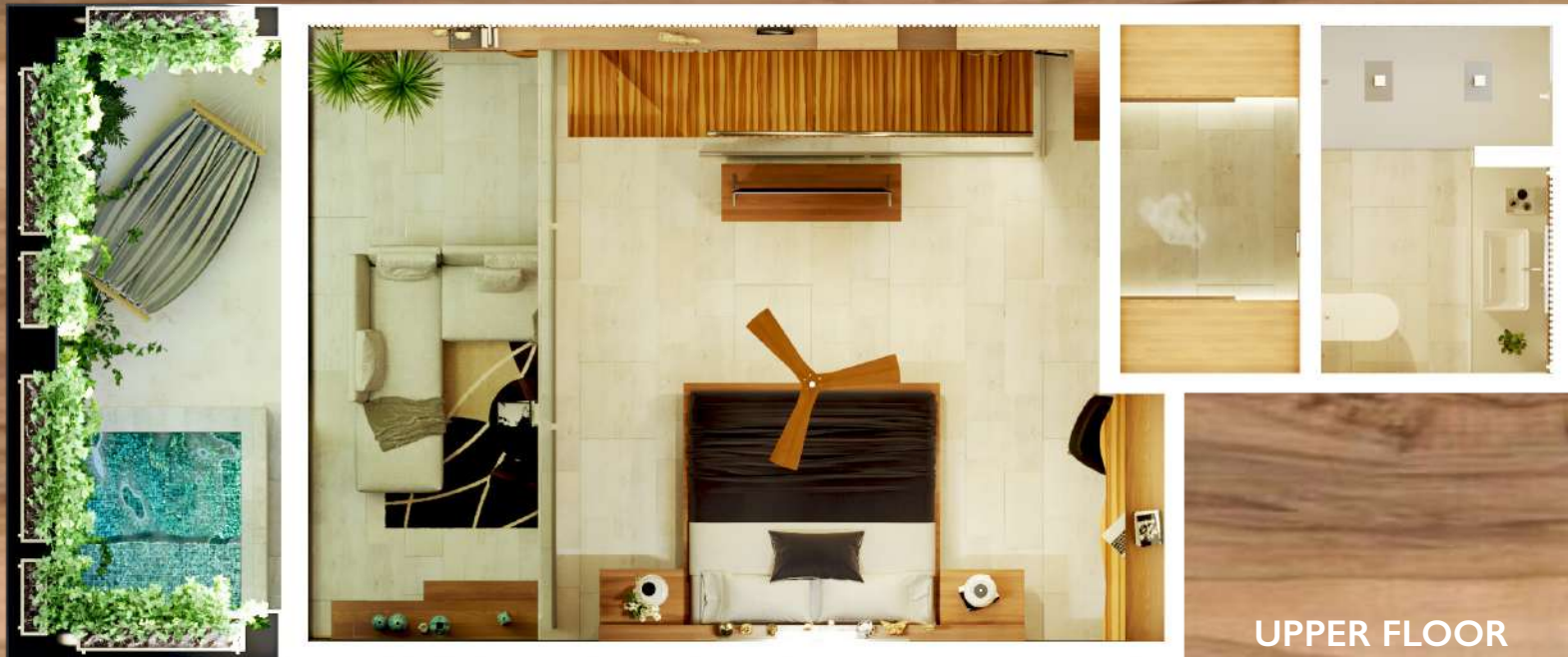
WITH THE FOLLOWING SPACES:

- 1 Bedroom.
- 2 Walk-in closets.
- 2 Full Bathrooms.
- Dinning room.
- Kitchen.
- TV room.
- Jacuzzi.
- Terrace.
- Smart Unit.
- Bluetooth Control of air conditioning, audio system and lighting.
- Smart entrance.
- Furnished & Equipped.





GROUND FLOOR



UPPER FLOOR

APARTMENT

FIRST LEVEL

- Interior: 63.95m² (688.35 sq.ft)
- Terrace: 12.30m² (132.40 sq.ft)
- Total: **76.25m²** (820.75 sq.ft)

WITH THE FOLLOWING SPACES:

- 1 Bedroom.
- Walk-in closet.
- 2 Full Bathrooms.
- Dinning room.
- Kitchen.
- TV room.
- Balcony
- Terrace.
- Smart Unit.
- Bluetooth Control of air conditioning, audio system and lighting.
- Smart entrance.
- Furnished & Equipped.





APARTMENT

- Interior: 63.90m² (687.80 sq.ft)
- Terrace: 13.40m² (144.25 sq.ft)
- Total: **77.30m²** (832.05 sq.ft)

WITH THE FOLLOWING SPACES:

- 1 Bedroom.
- Walk-in closet.
- 2 Full Bathrooms.
- Dinning room.
- Kitchen.
- TV room.
- Terrace.
- Smart Unit.
- Bluetooth Control of air conditioning, audio system and lighting.
- Smart entrance.
- Furnished & Equipped.





STUDIO A

- Interior: 45.20m² (486.50 sq.ft)
- Terrace: 4.50m² (48.45 sq.ft)
- Total: **49.70m² (534.95 sq.ft)**

WITH THE FOLLOWING SPACES:

1 Bedroom.

Walk-in closet.

1 Full bathroom.

Kitchen.

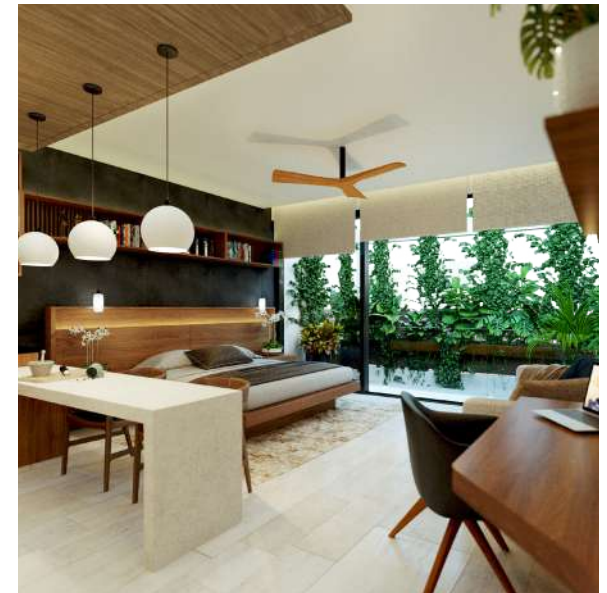
Balcony.

Smart Unit.

Bluetooth Control of air conditioning,
audio system and lighting.

Smart entrance.

Furnished & Equipped.





STUDIO A

EXTENDED TERRACE

- Interior: 45.20m² (486.50 sq.ft)
- Terrace: 8.00m² (86.10 sq.ft)
- Total: 53.20m² (572.60 sq.ft)**

WITH THE FOLLOWING SPACES:

1 Bedroom.

Walk-in closet.

1 Full bathroom.

Kitchen.

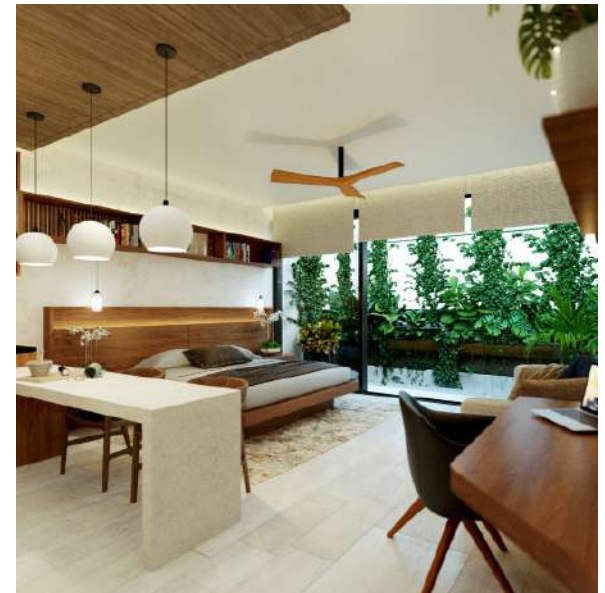
Balcony.

Smart Unit.

Bluetooth Control of air conditioning,
audio system and lighting.

Smart entrance.

Furnished & Equipped.





STUDIO B

EXTENDED TERRACE

- Interior: 42.60m² (458.55 sq.ft)
- Terrace: 8.00m² (86.10 sq.ft)
- Total: **50.60m²** (544.65 sq.ft)

WITH THE FOLLOWING SPACES:

1 Bedroom.

Walk-in closet.

1 Full bathroom.

Kitchen.

Balcony.

Smart Unit.

Bluetooth Control of air conditioning,
audio system and lighting.

Smart entrance.

Furnished & Equipped.



ACCESS



STUDIO B

- Interior: 42.60m² (458.55 sq.ft)
- Terrace: 4.50m² (48.45 sq.ft)
- Total: **47.10m² (507.00 sq.ft)**

WITH THE FOLLOWING SPACES:

- I Bedroom.
- Walk-in closet.
- I Full bathroom.
- Kitchen.
- Balcony.
- Smart Unit.
- Bluetooth Control of air conditioning, audio system and lighting.
- Smart entrance.
- Furnished & Equipped.



ACCESS



STUDIO C

- Interior: 47.50m²
Total: **47.50m²** (511.30 sq.ft)

WITH THE FOLLOWING SPACES:

- 1 Bedroom.
- Walk-in closet.
- 1 Full bathroom.
- Kitchen.
- Smart Unit.
- Bluetooth Control of air conditioning, audio system and lighting.
- Smart entrance.
- Furnished & Equipped.







JATSA HA