


A dense, dark green background of tropical foliage, including large palm fronds and smaller leafy plants, creating a lush, jungle-like atmosphere.

# SURENNA

RESIDENCIAL



An aerial photograph of a residential development. The houses are modern, multi-story buildings with light-colored facades and flat roofs. They are arranged in a row, separated by a road and surrounded by dense tropical vegetation, including palm trees and other green plants. A road with a few cars is visible on the left side. The overall scene is lush and green, suggesting a high-quality, nature-oriented living environment.

PRE SALE MAY 2021





The best tropical destination for international tourism.

Its historical richness, magical nature, sunsets and beaches make it an ideal place to visit.

One of the destinations with the highest hotel occupancy and the most chosen destination from AirBnB users in the world.





Be Reborn, revive, inhabit



Surena is one of Tulum's only single-family communities. It consists of **25 exclusive residential houses and 34 lots**, starting from 250 m<sup>2</sup> with a great landscape and lush gardens designed to enjoy the surroundings.







Model A



Model B

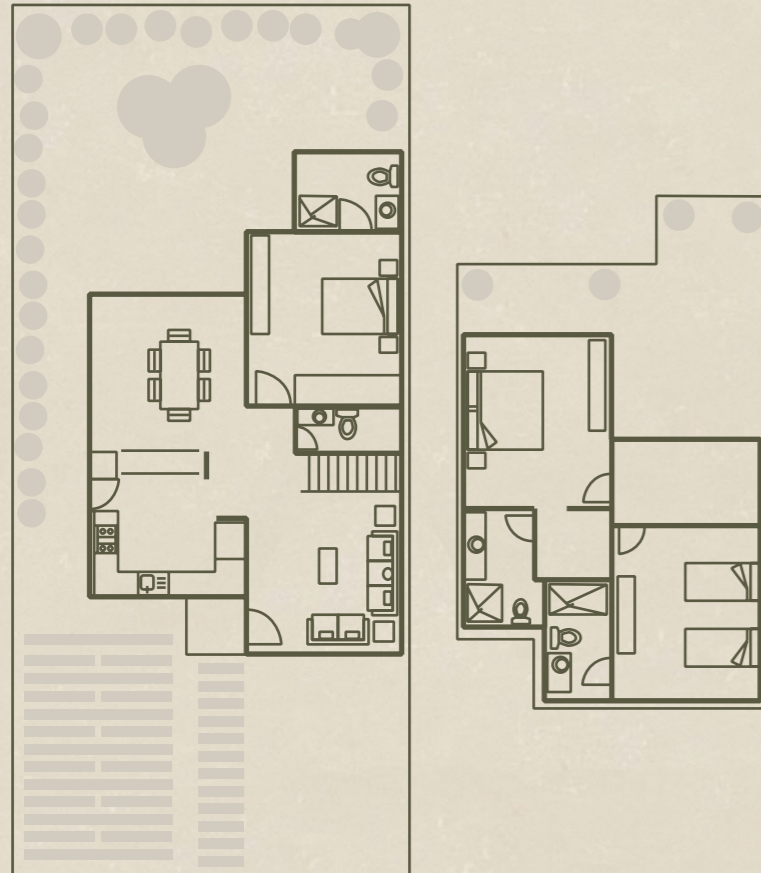


Model C



## Model A

158.25 m<sup>2</sup>

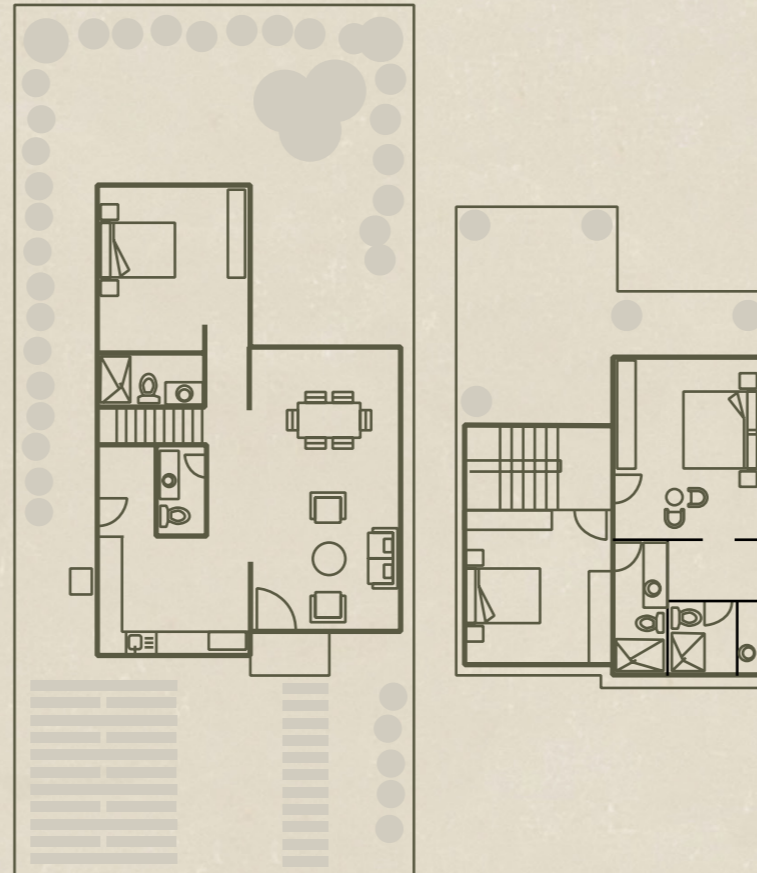


**Ground Floor:** Living room, bedroom, kitchen, dining room and two car garage.

**Top Floor:** Master bedroom and bedroom.

## Model B

154.55 m<sup>2</sup>

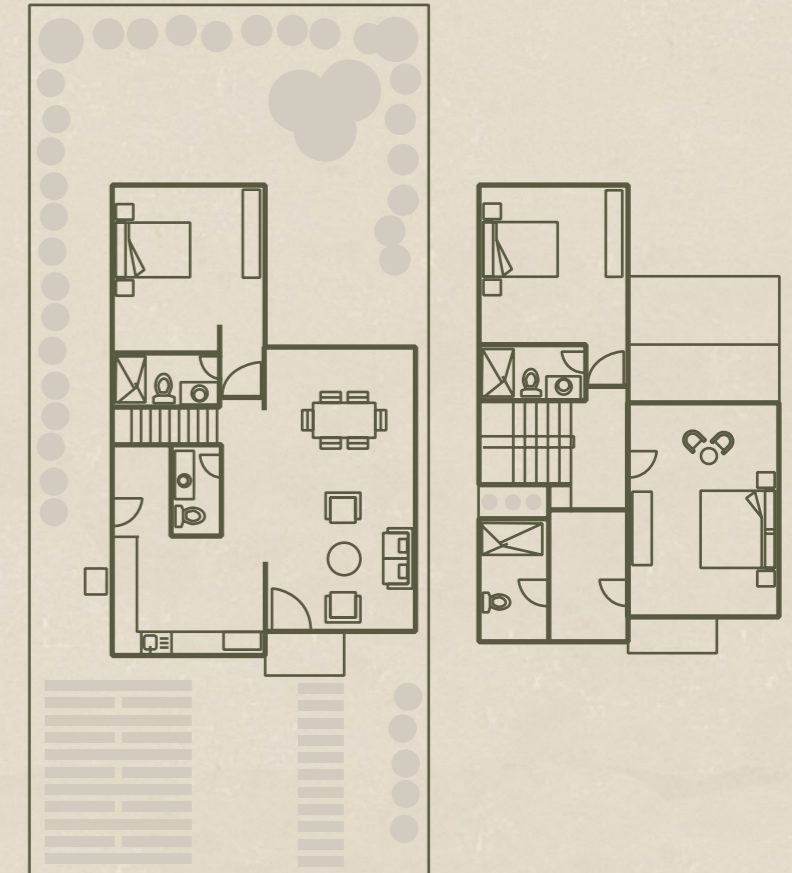


**Ground Floor:** Living room, bedroom, kitchen, dining room and two car garage.

**Top Floor:** Master bedroom and bedroom.

## Model C

156.02 m<sup>2</sup>



**Ground Floor:** Living room, bedroom, kitchen, dining room and two car garage.

**Top Floor:** Master bedroom and bedroom.



# 01. Model A Houses.











01. Model B Houses.



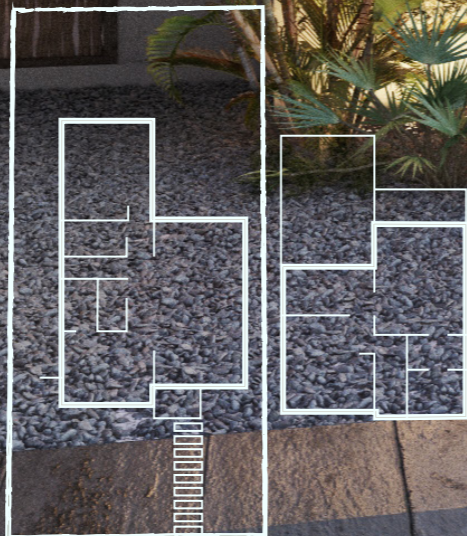








01. Model C Houses.









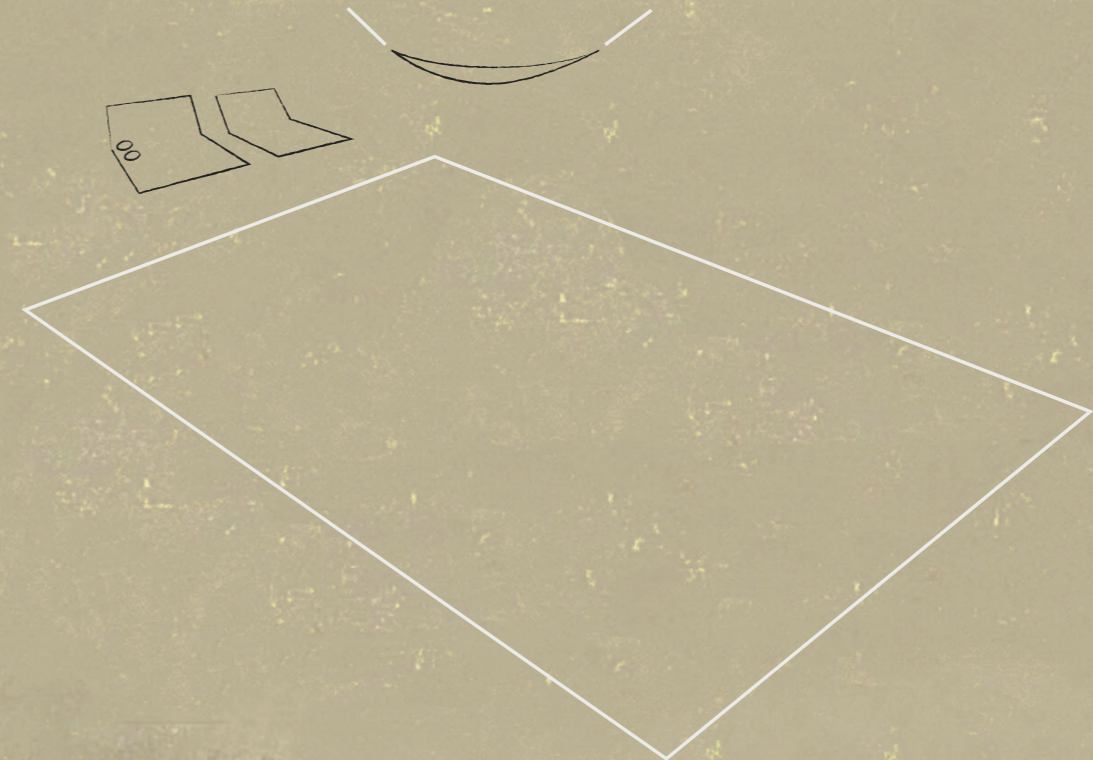




## 03. Additional

Terrace, swimming pool, 4th bedroom and furnishing.

\*Only applicable to models A and B.



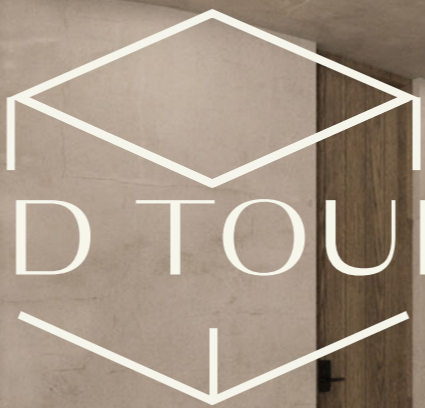










A white line-art logo consisting of a hexagon with a downward-pointing arrow at the bottom, and the text "3D TOUR" centered within it.

# 3D TOUR

● [See Ground Floor](#)

● [See Top Floor](#)