

RIO



RIO

RIO

# RIO

Allow the sunshine to embrace you and welcome your home in paradise, where the Mayan world and the magic hidden within come to light.





  
RIO



# RIO

Submerge yourself in RIO, the latest launching of RAISE that is characterized by its great success and out of the ordinary designs that capture the essence of the place. Inspired by the mystical Mayan cenotes, it offers a tropical environment full of freshness.





# TULUM

Just to mention the name of Tulum takes your mind to a paradisiac destination, which has positioned itself as one of the favorite places to vacation and now to live on an international scale, creating a unique opportunity in the real estate market.





# AMENITIES



Reception



Elevator



Underground parking



Bi-level gym



Spinning area



Swimming space in ground floor



Swimming pool in rooftop



Rooftop whit grill & solarium



Co-working



Game room



Kids club



Central fielder in ground floor

# YOGA





# GYM



# SPINNING





YOURSELF IN  
THE MYSTICISM  
OF PARADISE

**SUBMERGE  
YOURSELF IN  
THE MYSTICISM  
OF PARADISE**

SUBMERGE  
YOURSELF IN  
THE MYSTICISM

RI



**RIO**

RIO

**O**

**RI**

**R**





SWIMMING POOL IN ROOFTOP







This development is constituted of 33 modern apartments, 1, 2, 3 bedrooms apartments as well as penthouses, each one of those trying to break with the "tradition" with spaces full of energy, where the blue notes take you back to the Mayan underground rivers and the tropical yellow takes you to the warm beaches full of palm trees.





# FINISHES

Its soft waves bring this caribbean touch full of life, that is reflected in the materials and textures implemented, as well as the inside green areas located in the center of the building, transforming RIO in a small jungle, and your home in a paradise.



# SUITE







# APARTMENT







# STUDIO



# LOCATION

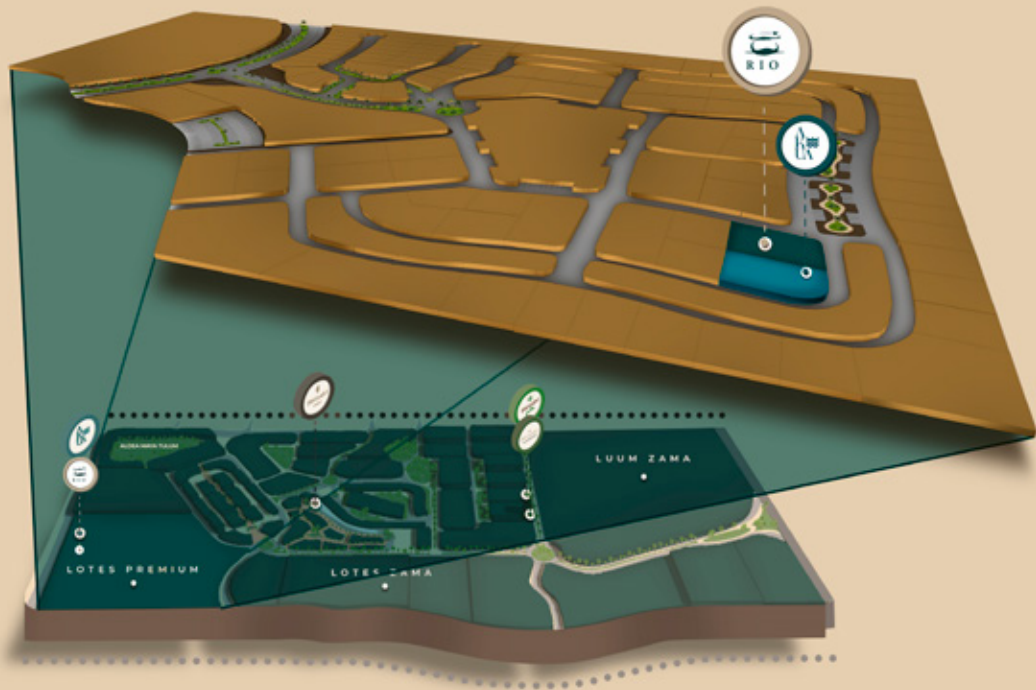
Located in the renowned residential area of Aldea Zama in Tulum, the most exclusive and in a great international peak for both touristic and long-term rentals, where more and more investors choose to open their businesses while benefiting and increasing the capital gain of the area, highlighting that it is just 10 minutes away from the beach and 5 minutes away from town.



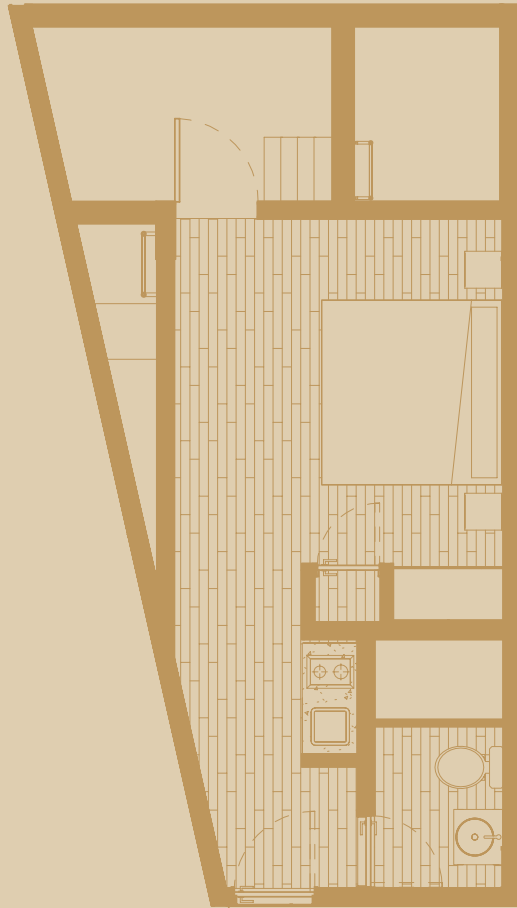


# ALDEA ZAMÁ

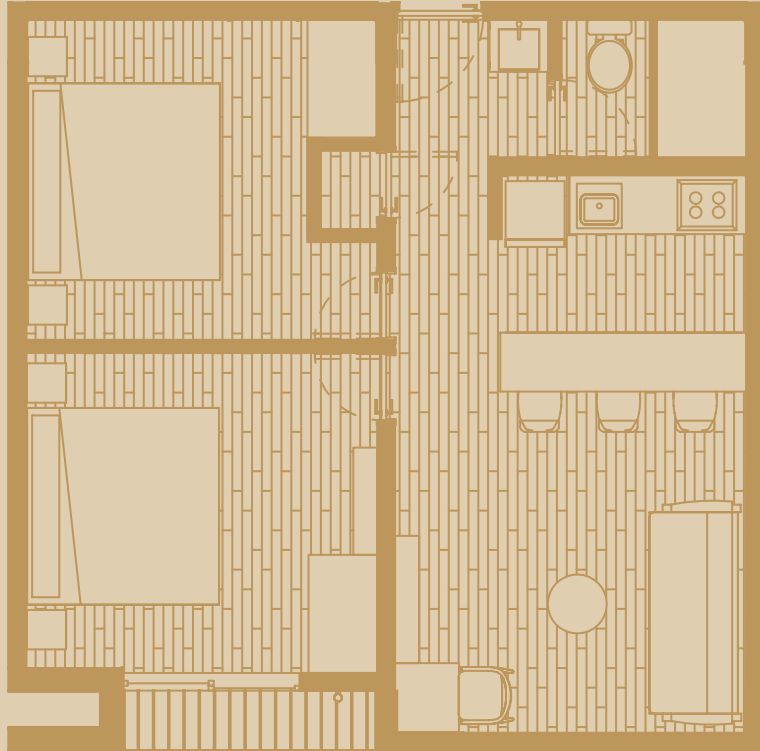
TULUM



# STUDIO



# 2 BEDROOM APARTMENT





3 BEDROOM  
APARTMENT  
LOCK OFF



2 BEDROOM  
APARTMENT  
LOCK OFF

