



NATIVA[®]
TULUM

Live in the heart of Tulum





Enjoy the legacy of the Mayan Culture



**NATIVA[®]
TULUM**

About Nativa Tulum

NATIVA TULUM is a project with life,
inspired by the abundant vegetation that
naturally walls this development,
allowing a majestic view for a
privileged lifestyle, just like the ancient
natives of the beautiful land of Tulum.



Sahasrara





The project

Located in Tulum, Quintana Roo, NATIVA TULUM is conceived as a set of buildings around a large social space at the heart of the architectural project.

The buildings are divided into separate sets situated along the lines of the terrain, allowing them to hide among nature. Only visible from certain angles, this gives the resident an enchanting feeling of discovery and exploration.



The spatial logic of the project allows all the apartments to enjoy the best views and orientations, protecting them from the sun and allowing them to have natural ventilation and lighting.

The project maintains its identity with Tulum, through the use of typical materials of the region, such as the finish with chukum resin, stone and wood masonry walls.







Master Plan

NATIVA TULUM has a privileged location, surrounded by abundant vegetation, smooth white sands with crystal clear waters framed by huge dunes. Enjoy the harmonious views of the tropical Mayan jungle.

The sustainable development goes hand in hand with the creation of a society that consolidates its origins, roots and traditions in caring for the earth and integrating ecological concepts.



The architects of Nativa Tulum



Arch. Alejandra Abreu Sacramento

Yucatecan architect, graduated from the Marista University of Mérida, who since 2004 has directed the companies AS Arquitectura + Diseño SCP together with her brother Xavier Abreu. They have developed various hotels, apartments, urban projects, housing developments, educational centers, public buildings, interiors, offices, shops and services, with which they have obtained several recognitions and publications.

Arch. Xavier Abreu Sacramento

Yucatecan architect, graduated from the Marista University of Mérida, who since 2004 has together with his sister Alejandra Abreu the firm AS Arquitectura + Diseño SCP, in which he has developed various residential, hotel, apartment, urban projects, housing developments, educational centers, public buildings, interior design, offices, shops and services, with which they have obtained several awards and publications, both national and international, obtaining great success in the commercial real estate field.





Arch. Carlos Eduardo Quesnel Moguel

Architect born in the city of Mérida, Yucatán, a place where his projects have made a special impact. He is currently the CEO of the Quesnel Arqs firm that was founded in 2016, where he is recognized for his projects and collaborations with other architectural companies, from single and multifamily residential, offices, shops, squares and mixed uses, among others. His projects have been published in various national and international architecture and construction books, magazines and websites.

Arch. Juan Carlos Seijo Encalada

Yucatecan architect who, since 2001, has been the general direct of the of the firm Seijo Peón Arquitectos y Asociados. During this period of time he has developed projects in various genres, such as: commercial, single-family and multi-family residential, cultural, hotels, urban restaurants and interior design. The work has been published in specialized pages, books and magazines.



Type - Studio

STUDIO STANDARD

SQFT 497.81 - 505.37

1204 | 2202 | 2203 | 3202 | 4202 | 4203 | 5202

STUDIO + POOL

SQFT 552.95 - 580.04

1102 | 1103 | 1105 | 2102 | 2103 | 3102 | 4102 | 4103 | 5102

STUDIO PENTHOUSE

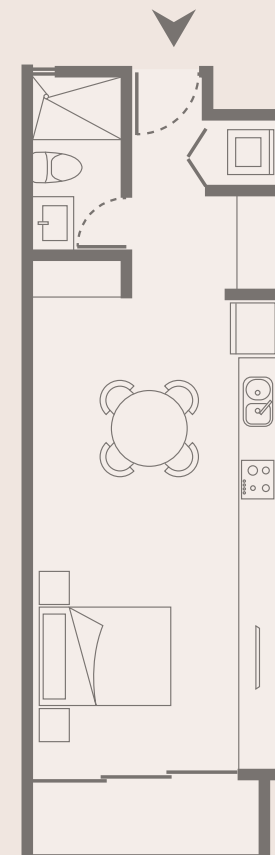
SQFT 939.47 - 947.08

1302 | 1305 | 1306 | 2302 | 2303 | 2304 | 3302 | 3033
4302 | 4303 | 4304 | 5302 | 5303



NATIVA®
TULUM

STUDIO STANDARD



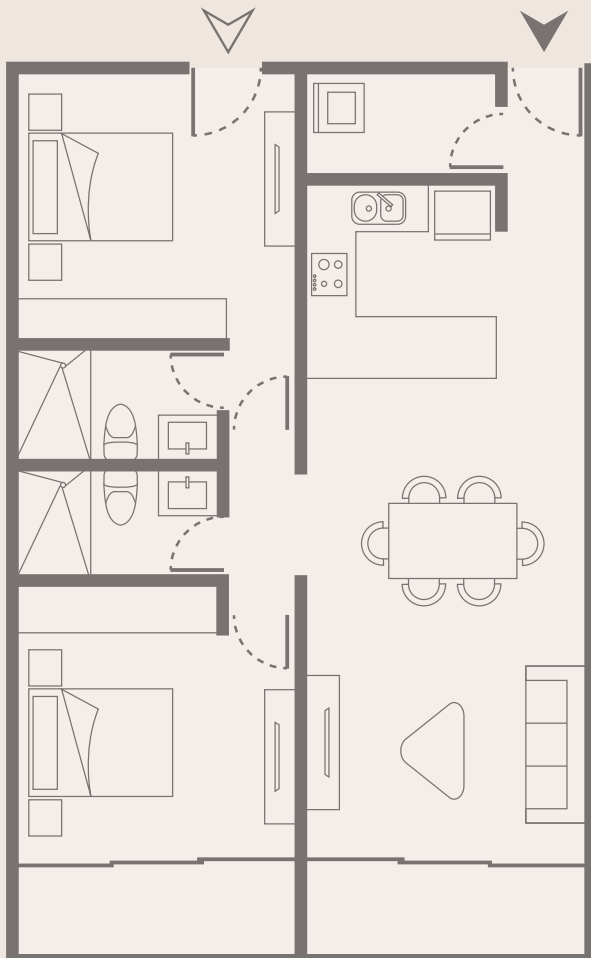
Type - Studio





**NATIVA[®]
TULUM**

2 BEDROOM LOCK-OFF



Type - 2 Bedrooms

2 BEDROOM LOCK-OFF

SQFT 1,026.34

1202 | 1203

2 BEDROOM LOCK-OFF + POOL

SQFT 1,137.32 - 1,349.12

1101 | 1104 | 1106 | 2101 | 2104 | 2204 | 3101 | 3103
3201 | 4101 | 4104 | 4201 | 5101 | 5203

2 BEDROOM PENTHOUSE

SQFT 1,862.97 - 1,868.95

1301 | 1307 | 2301 | 3304 | 4305 | 5301

2 BEDROOM PENTHOUSE + LOCK-OFF

SQFT 1,924.39

1303 | 1304

Type - 2 Bedrooms



Type - 3 Bedrooms

3 BEDROOM LOCK-OFF + POOL

SQFT 1,471.91 - 1,474.57

1201 | 1205 | 2201 | 3203 | 4204 | 5201

3 BEDROOM PENTHOUSE

SQFT 2,471.44 - 2,472.64

2305 | 3301 | 4301 | 5304



NATIVA[®]
TULUM

3 BEDROOM LOCK-OFF + POOL



Type - 3 Bedrooms







Rooftop

The roofs of the entire complex are used as social areas that allow you to enjoy the privileged views that Tulum has.



Amenities

The amenities are located on the ground floor and are connected to the buildings through large patios, fostering a sense of exclusive community for the inhabitants of NATIVA. The areas are designed to enrich their quality of life and disconnect them from the urbanization through tropical social spaces, physical activity and conditioning, entertainment and relaxation.

Amenities



GYM



OUTDOOR YOGA



HEALTHY SNACK



GRILL



EVENTS ROOM



COWORKING



POOL









HAMMOCKS



FIRE PIT



BAR

-  ZONA ARQUEOLÓGICA
ARCHAEOLOGICAL AREA
-  HOSPITAL
-  TERMINAL DE AUTOBUSES
BUS STATION
-  SUPERMERCADO
SUPERMARKET
-  WELLNESS CENTER
-  BANCO
BANK
-  TULUM CENTRO
TULUM DOWNTOWN

Bacalar ←

CARRETERA FEDERAL | FEDERAL HIGH WAY

Cobá ↑
CARRETERA FEDERAL | FEDERAL HIGH WAY
Cancún →

ZONA HOTELERA
HOTEL ZONE

PLAYA BEACH

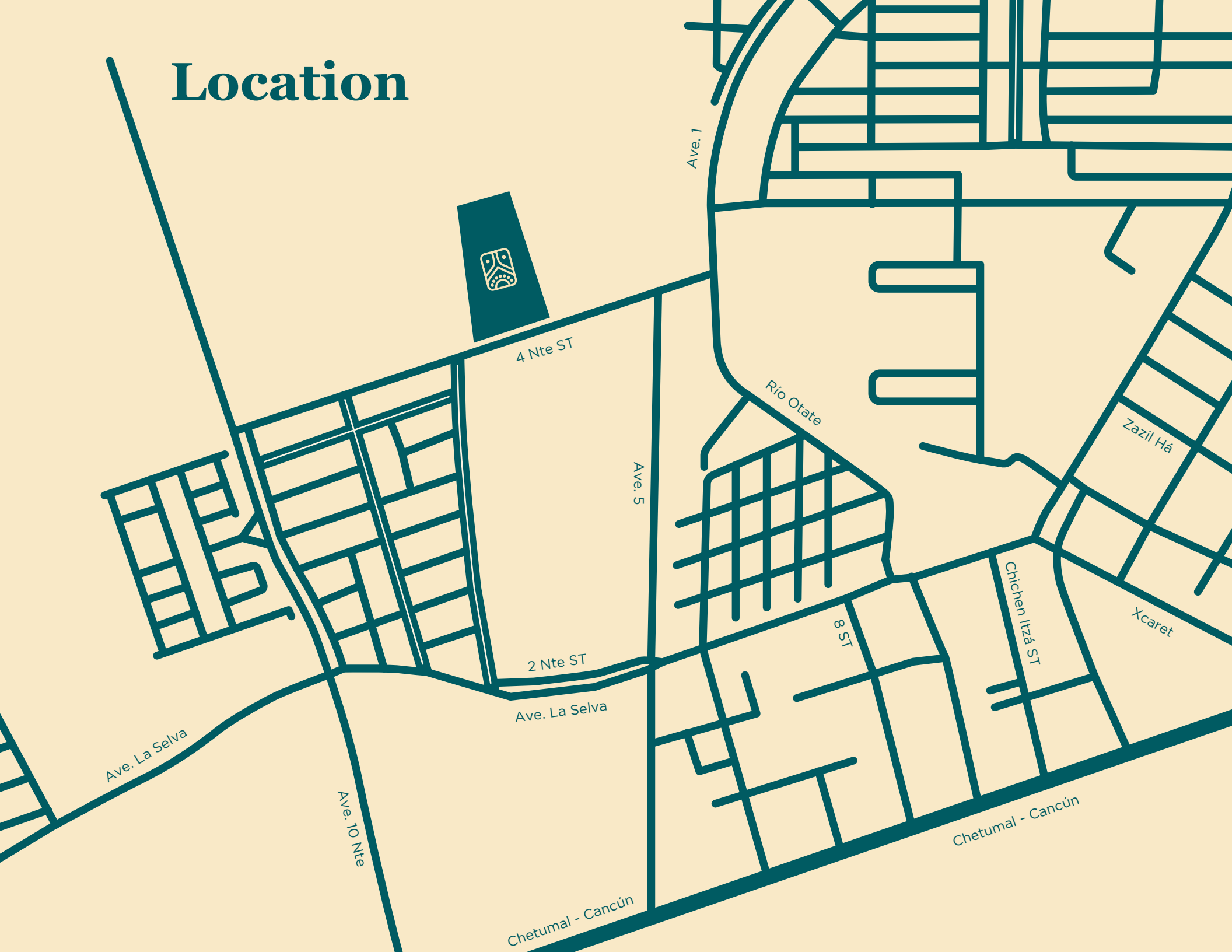
MAR CARIBE
CARIBBEAN SEA



RESERVA DE LA BIÓSFERA DE SIAN KA'AN
SIAN KA'AN BIOSPHERE RESERVE



Location



4 Nte ST

Ave. 7

Río Oate

Ave. 5

Zazil Há

2 Nte ST

8 ST

Chichen Itzá ST

Xcaret

Ave. La Selva

Ave. La Selva

Ave. 10 Nte

Chetumal - Cancún

Chetumal - Cancún