

WELCOME HOME

SOLUM Luxury Condos

VISION



SÖLUM

TULUM:

Surrounded by natural and cultural wealth. This town is located in the heart of the Riviera Maya, five minutes from the most beautiful beaches in the world, as well as important tourist destinations such as Playa del Carmen and Cancun.

Playa Paraíso, less than five minutes away from Aldea Zamá, Tulum





View of residential development

CONCEPT

SOLUM is the route that connects you with the sunrise, within one of the most exclusive areas of the Riviera Maya.

It started as a project located in the heart of Aldea Zamá, also known as "The City of Dawn" (for its translation from the Mayan dialect). It takes into account its context and connection with the exterior spaces, for that reason, the main entrance of the apartment complex is marked with the oscillating path of the sun.

AMENITIES

LOBBY AND RECEPTION

SHOPPING AREA

RESTAURANT

TWO ROOFTOPS

With its own amenities

POOL AREAS

PRIVATE GYM

SNACK BAR

LOUNGE AREA

With outdoor lounge chairs

LAUNDRY

GARDENS

INTERIOR PASSAGES

*Rooftop of Solum, where one of the
pools and the gym is located*



SOLUM Luxury Condos

LOCATION



S O L U M



MAP

Aldea Zamá

SOLUM Luxury Condos

ALDEA ZAMÁ

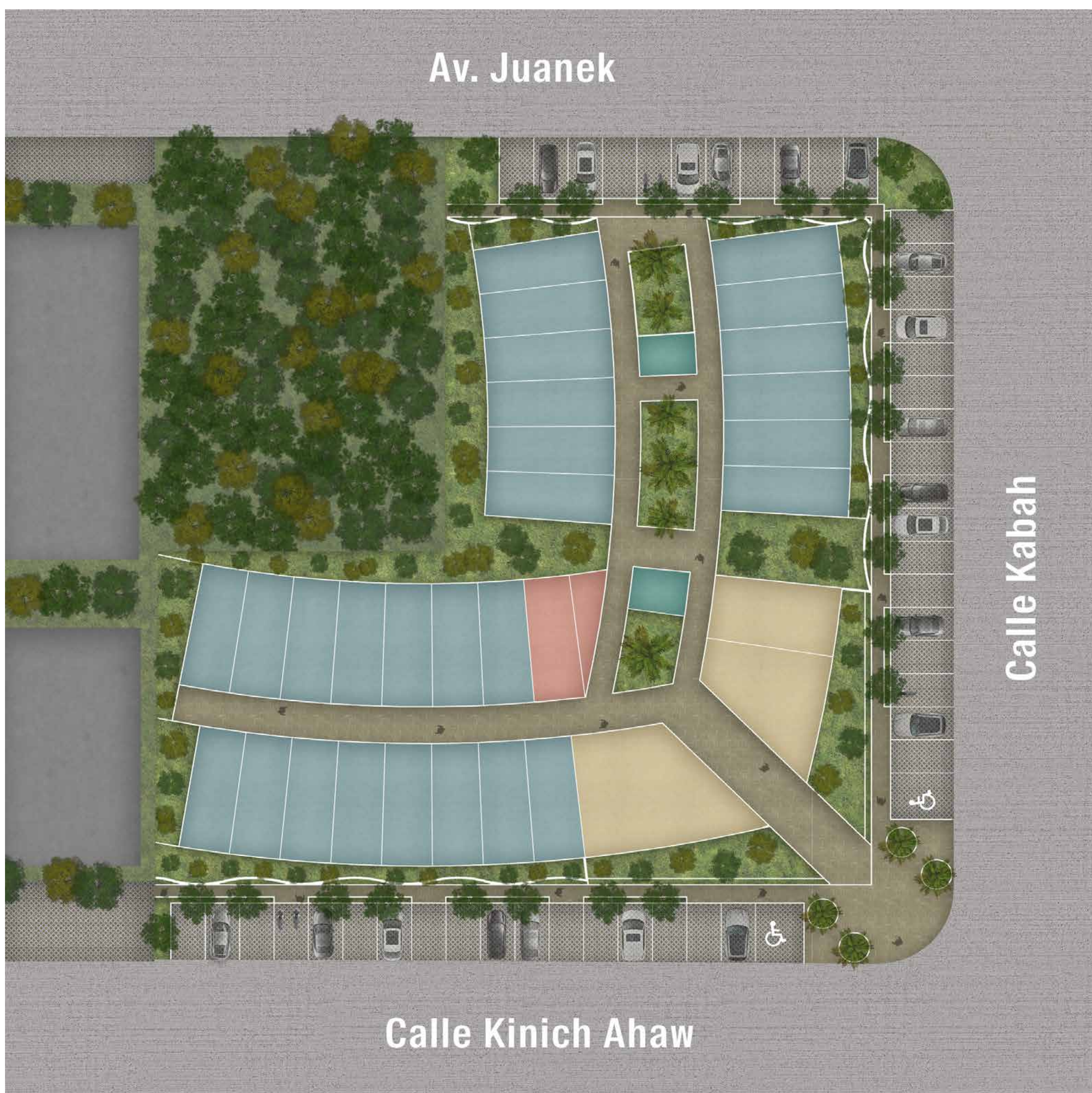
Solum is located in Aldea Zamá, near the best beaches in the country. It is one of the areas with the highest added value in the Riviera Maya.

An exclusive and cosmopolitan community, with a variety of culinary, artistic and entertainment proposals.

Everything you need to make your life here a different experience.

MASTER PLAN

The development is located on the corner of Kabah Street and Kinich Ahaw Street, in the Aldea Zamá neighborhood in Tulum, Quintana Roo. Located in an area of constant development, full of condominiums, restaurants and hotels, close to the main entrance of Tulum and the beach. In addition, it has environments that invite you to socialize in a comfortable way, through the integration of architecture and spectacular landscapes.



SOLUM Luxury Condos

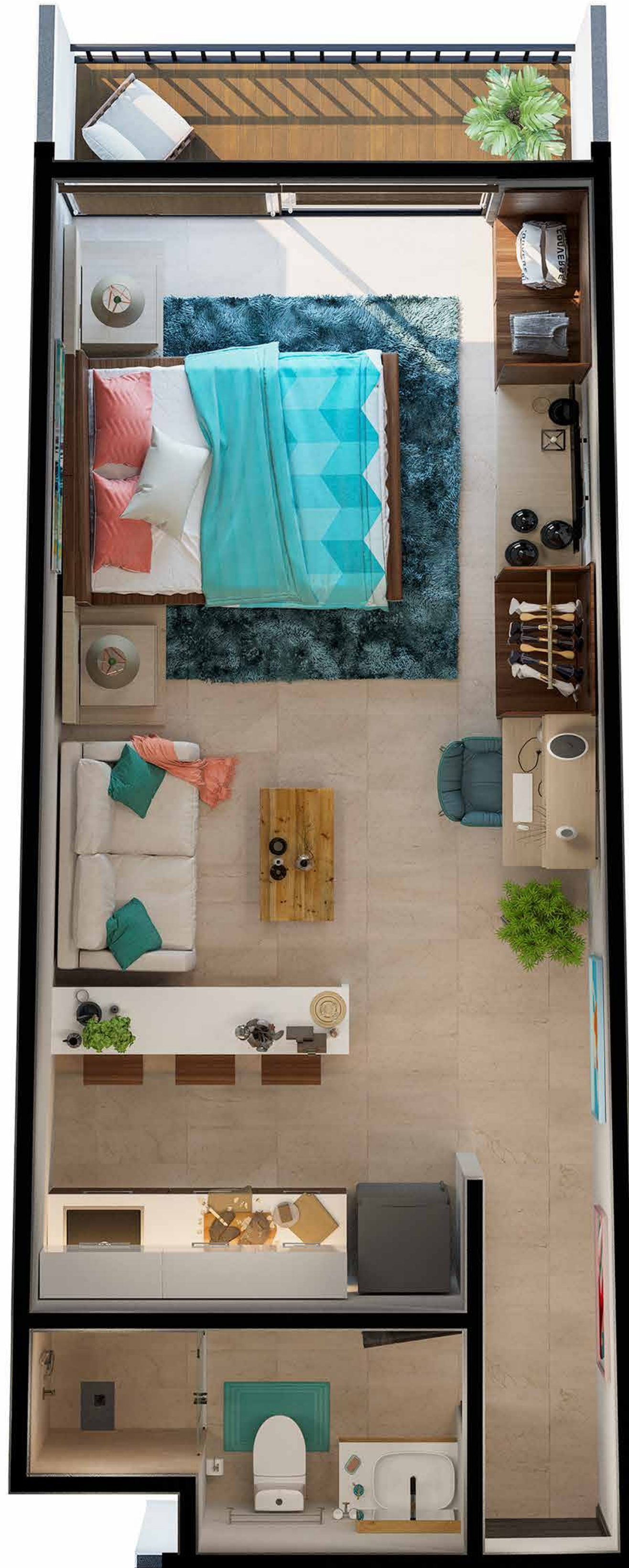
MODELS



S Ö L U M

STANDARD

with balcony



Indoor Areas

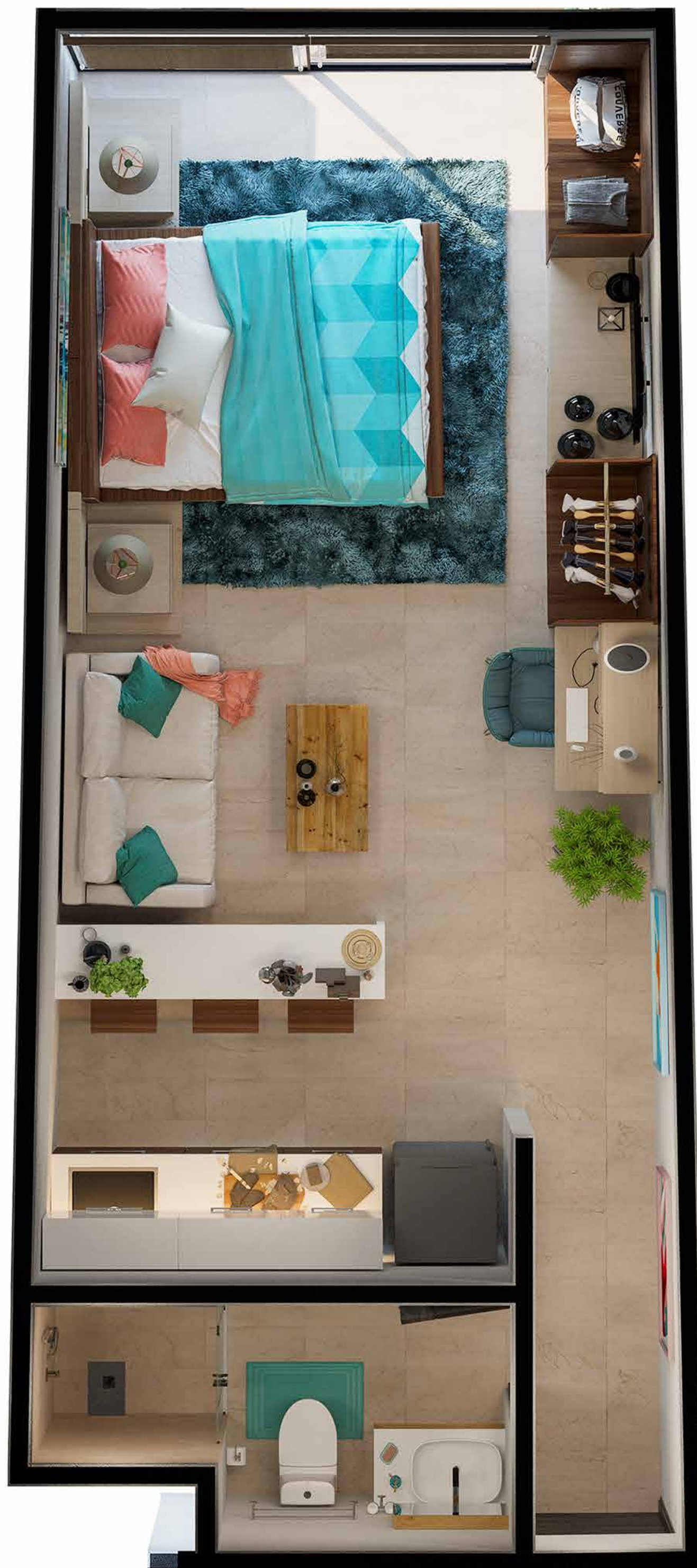
Bedroom
Full bathroom
Living room
Breakfast nook

Kitchen
Balcony

General Features: From 38 M²

STANDARD

without balcony



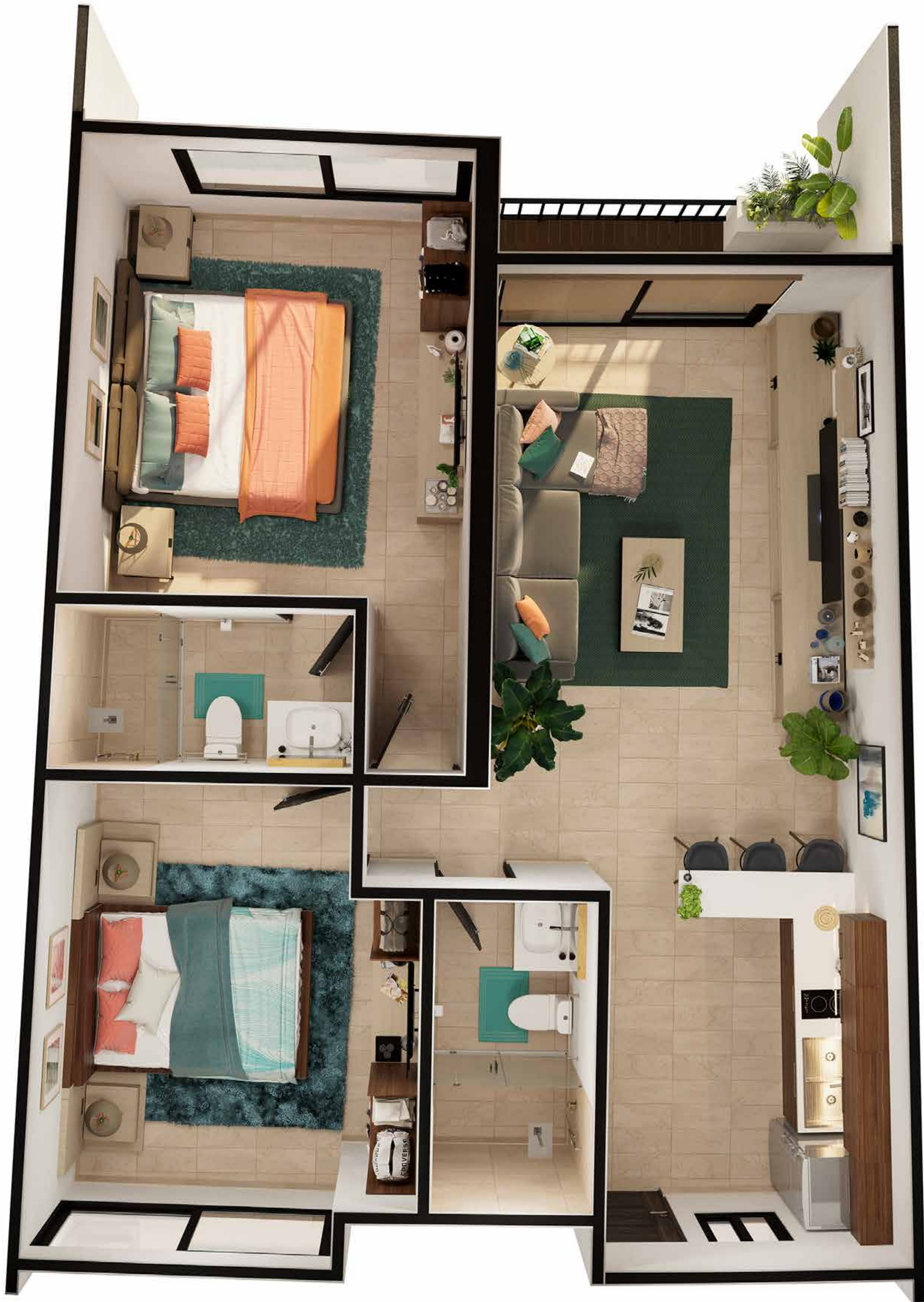
Indoor Areas

Bedroom
Full bathroom
Living room
Breakfast nook

Kitchen

General Features: From 38 M²

STANDARD DUO



Indoor Areas

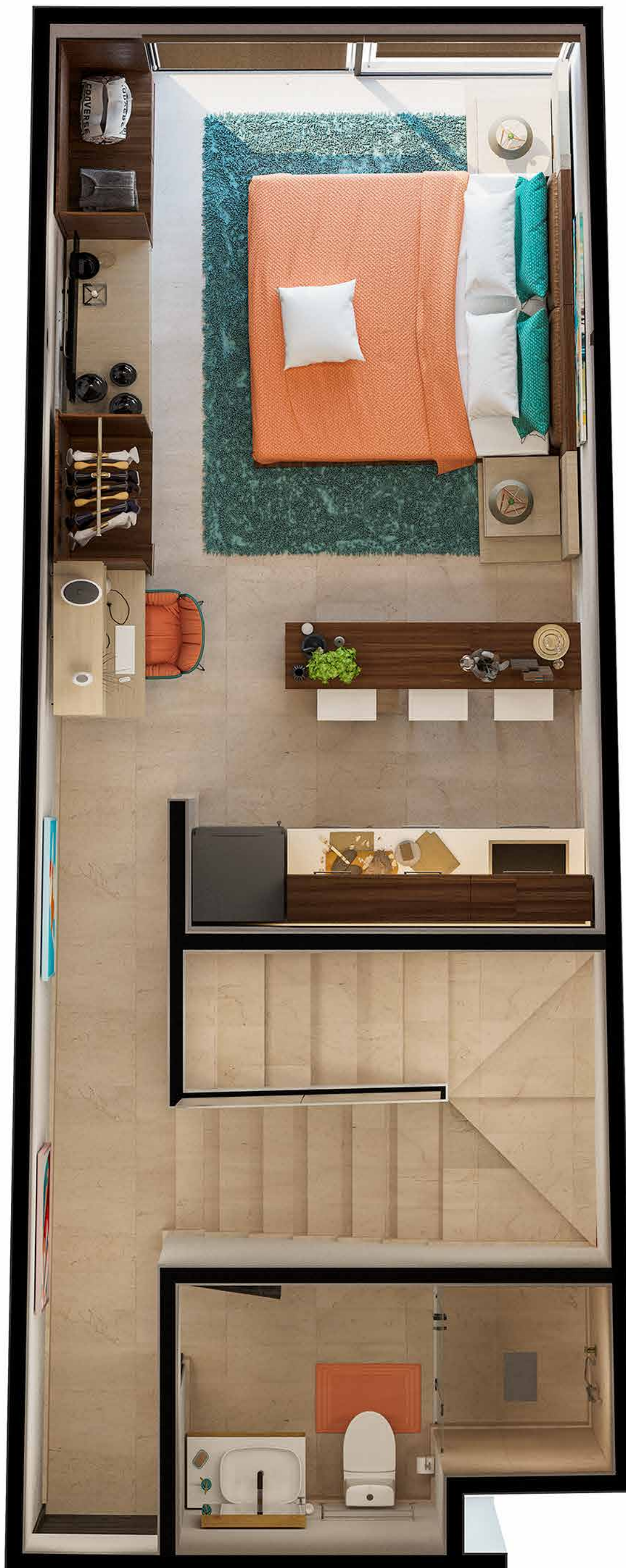
2 Bedrooms
2 Full bathrooms
Living room
Breakfast nook

Kitchen
Balcony

General Features: From 76 M²

PENTHOUSE

Low Level



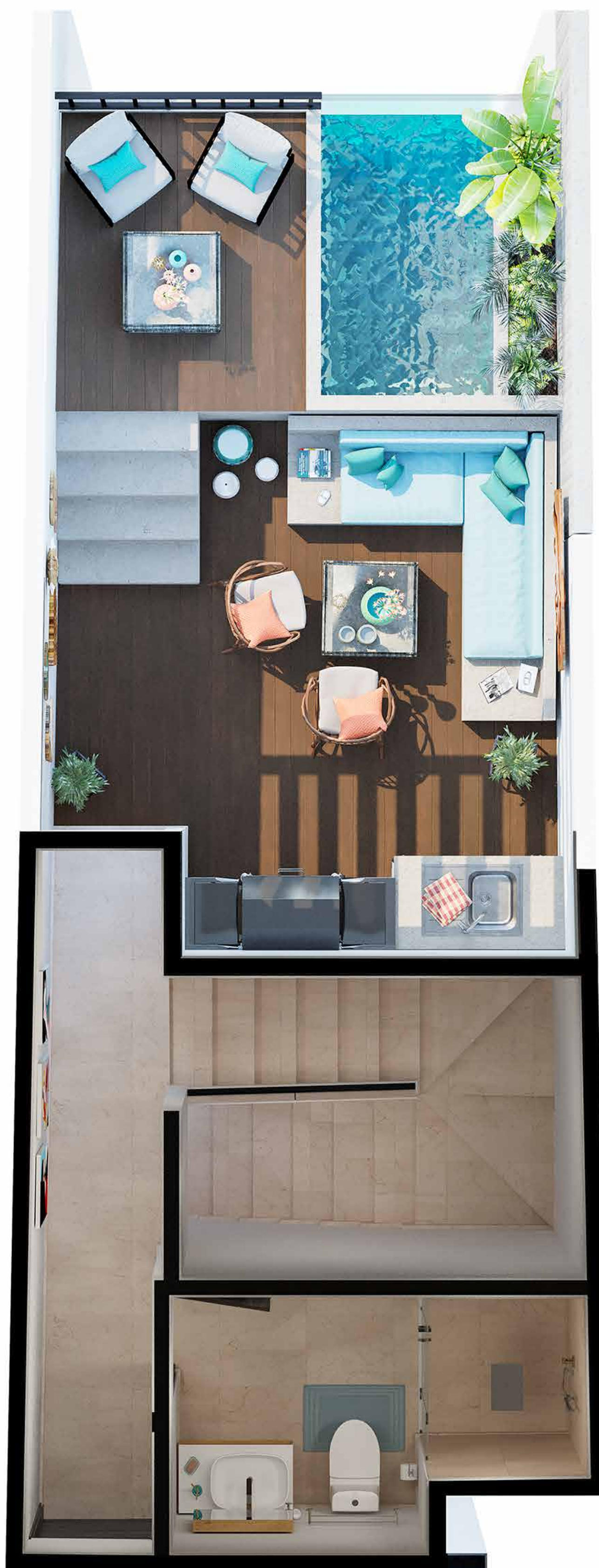
Indoor Areas

Bedroom
Full bathroom
Breakfast nook
Kitchen

General Features: From 76 M²

PENTHOUSE

Top Floor



Indoor Areas

Full bathroom

Outdoor living room

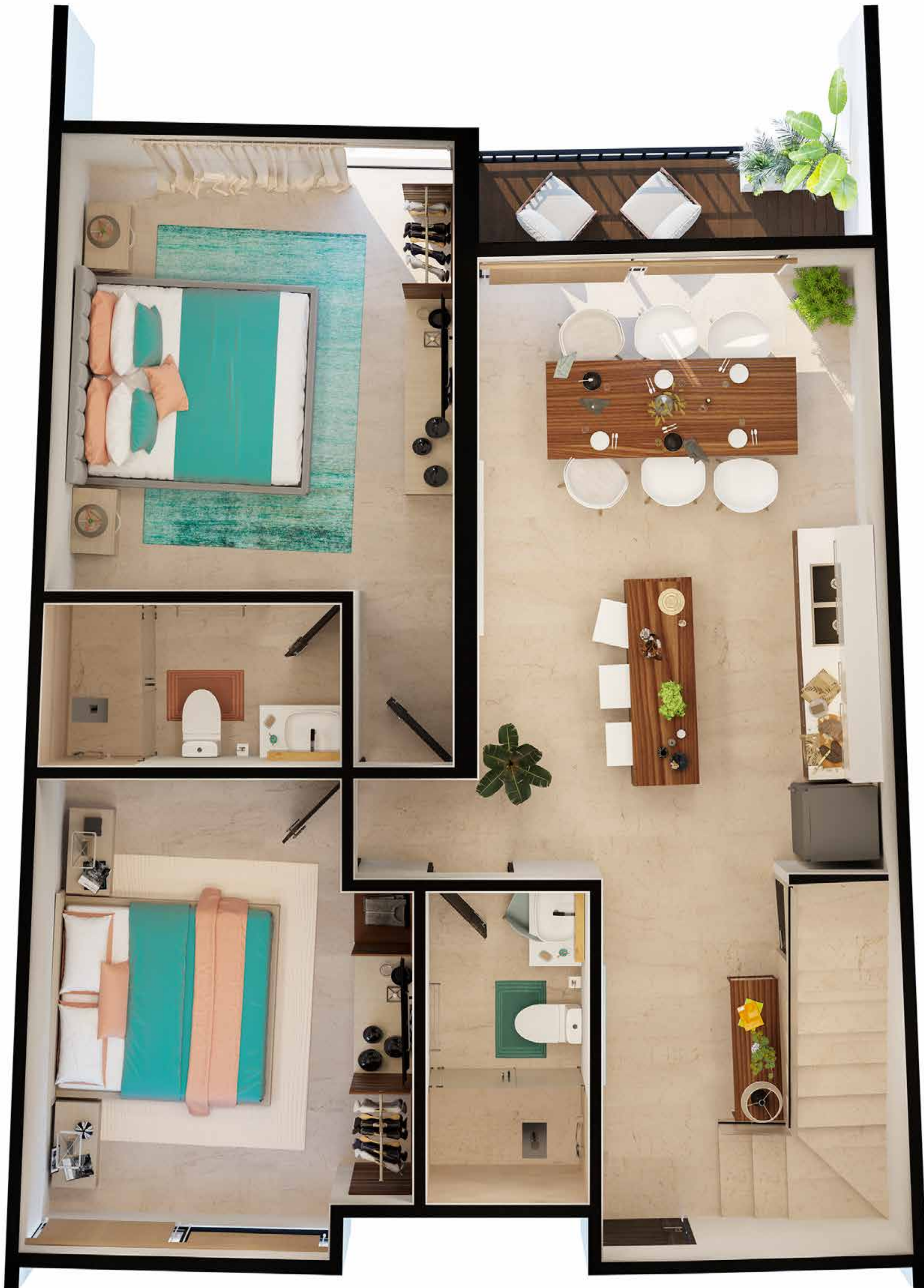
Swimming pool with
sundeck

Barbecue area

General Features: From 76 M²

PENTHOUSE DUO

Low Level



Indoor Areas

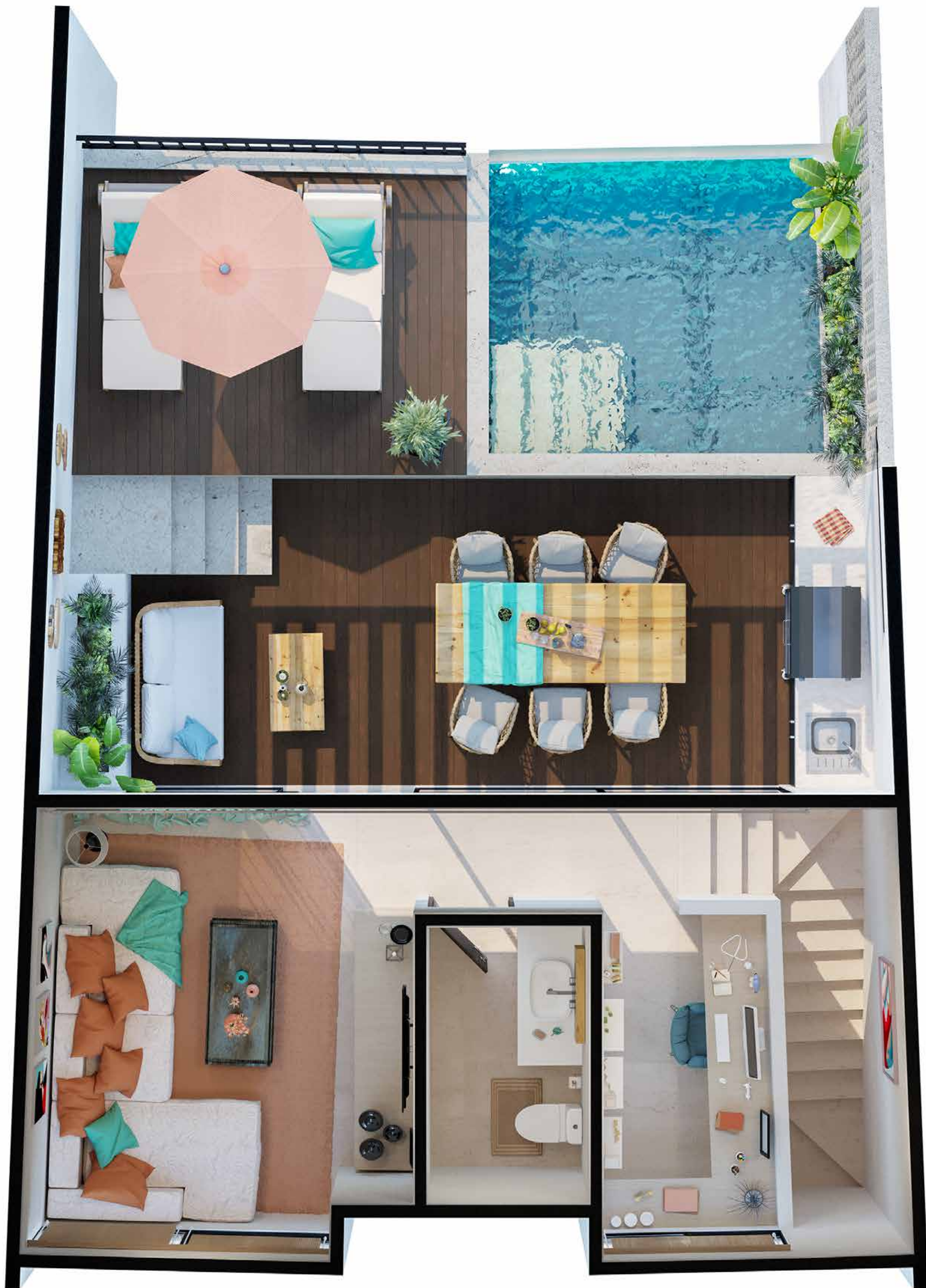
2 Bedrooms
2 Full bathrooms
Living room
Breakfast nook

Kitchen
Balcony

General Features: From 152 M²

PENTHOUSE DUO

Top Floor



Indoor Areas

Half bathroom

Outdoor living room

Outdoor dining room

Swimming pool with sundeck

Barbecue area

Storage room

Lounge area

Studio

General Features: From 152 M²