

INAJHA'

by ELEMENTAL



NAJ HA'
by **ELEMENTAL**



WATER



FIRE



EARTH



AIR

ELEMENTAL is made up of four developments that will be built in stages, each representing one of nature's elements.

Elemental is each being having its unique place in the complex universal architecture.



NAJ HA'

It is the place where prosperity flows and its translation means "House of water".

Its origin stems from the Mayan words



NAJ
house

+



HA
water







42
apartments

34,875 sq.ft
of construction

Wide spaces, avant-garde design, and quality in each detail.

Project with luxury amenities and areas designed for living a complete immersive experience.

A scenic view of a tropical beach. The foreground shows golden sand with gentle waves washing onto it, creating white foam. The water transitions from a light turquoise near the shore to a deeper blue further out. The sky is a vibrant blue with scattered white clouds. The overall atmosphere is bright and inviting.

WELCOME TO TULUM

TULUM, REFUGE FROM THE WORLD WHERE NEW BEGINNINGS ARE POSSIBLE.



ALDEA ZAMA

PLAYA SANTA FE

PLAYA PARAISO

PLAYA LAS PALMAS

ZONA HOTELERA TULUM

AV. KUKULKÁN

CONVENIENT LOCATION
4 minutes | 1.1 mi. to the beach

REGIÓN 8



THE LARGEST ROOF GARDEN IN TULUM

Naj Ha' is divided into four buildings. At the heart of the development is the common area of approximately **7211.82 sq. ft.**

At its highest level is the largest roof garden in Tulum, **11840.30 sq. ft.** inter-connected by panoramic bridges that create an incomparable atmosphere.





AMENITIES



Sundeck



Yoga room



Swimming pool



Bar & Dj Zone



Elevators



Hammocks



Gym



24/7
surveillance



Parking



4 Roof Gardens



Lounge



6 hot tubs



Access to
beach clubs



CCTV



Controlled
access

THE BEST
SUNSETS
360°
JUNGLE VIEW





WELLNESS CAPITAL

World-renowned destination for the wellness and healthy lifestyle

Naj Ha's open spaces surrounded by vast vegetation promote a balanced lifestyle.

One of our hallmarks is the yoga dome and gym.







TYOLOGIES

Naj Ha' has 7 types of departments
with variants such as:

Size

Number of rooms

Balcony with outside view

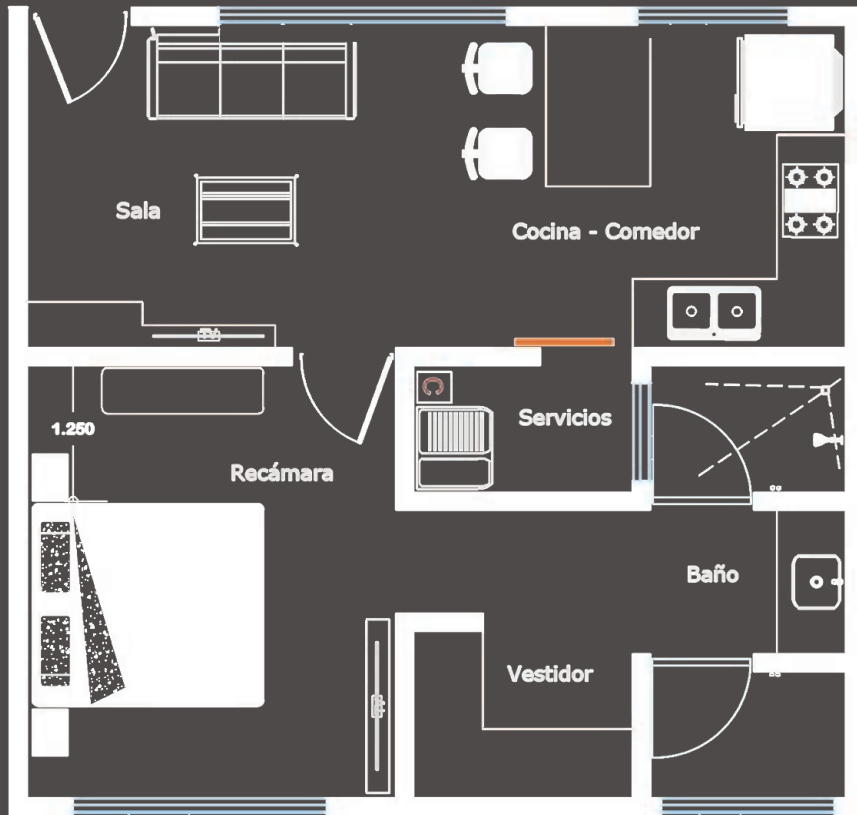
Balcony with interior view

Pool | Jacuzzi



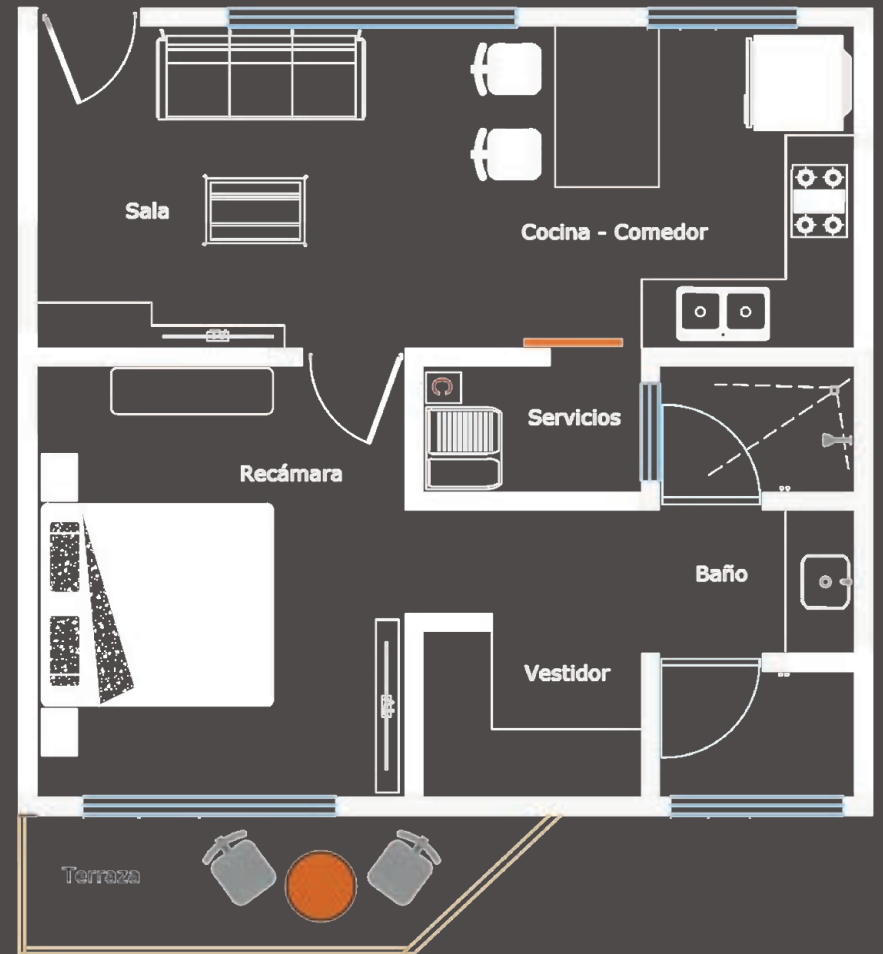
A
(Ground floor)

557.57 Sq. ft.

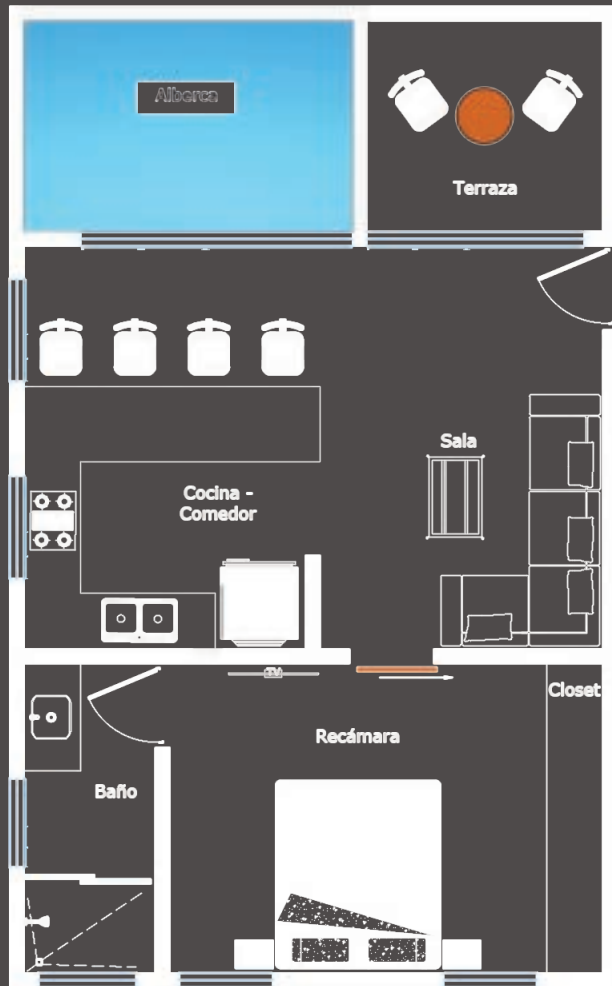


A
(Level 1 & 2)

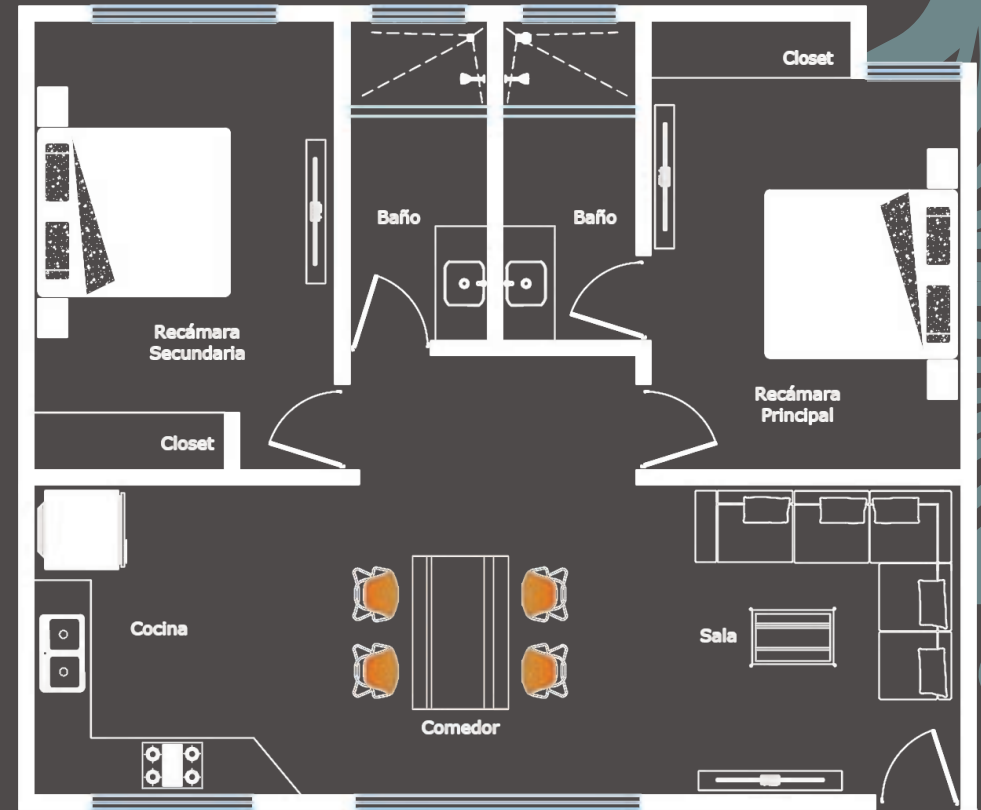
609.99 Sq. ft.



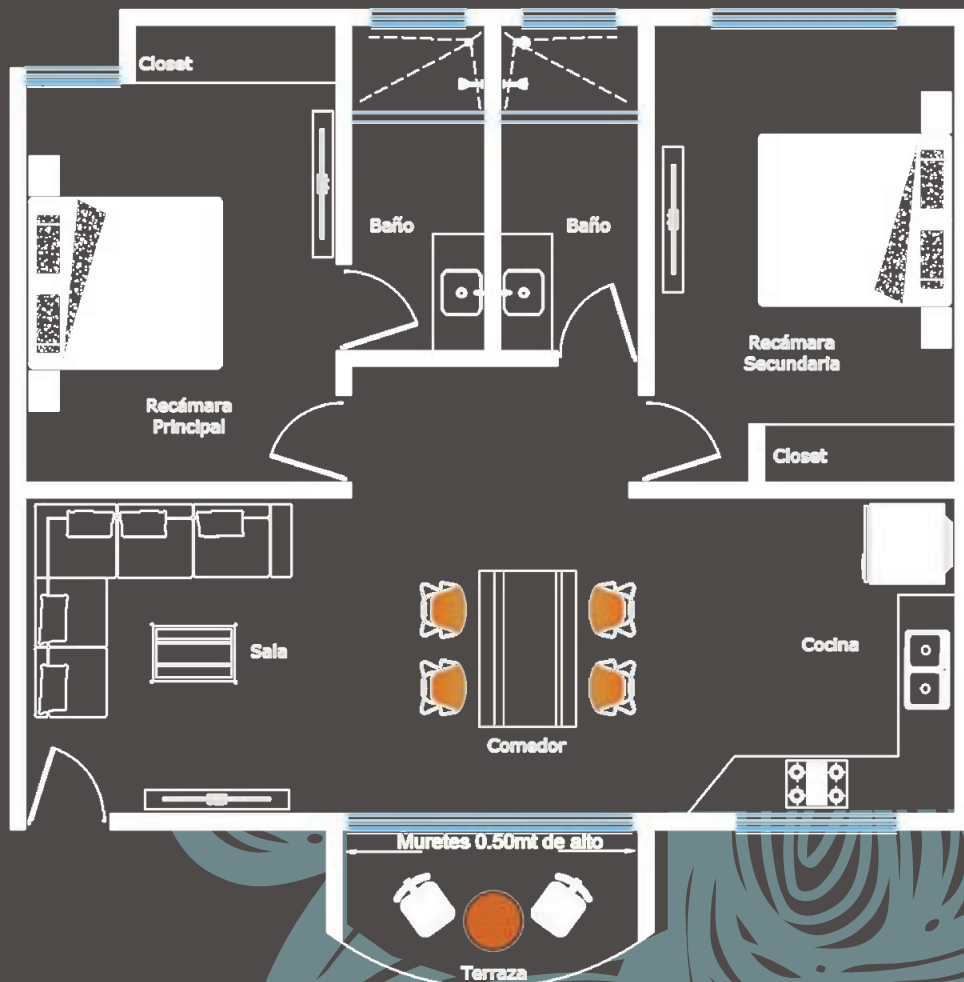
B | 727.20 Sq. ft.



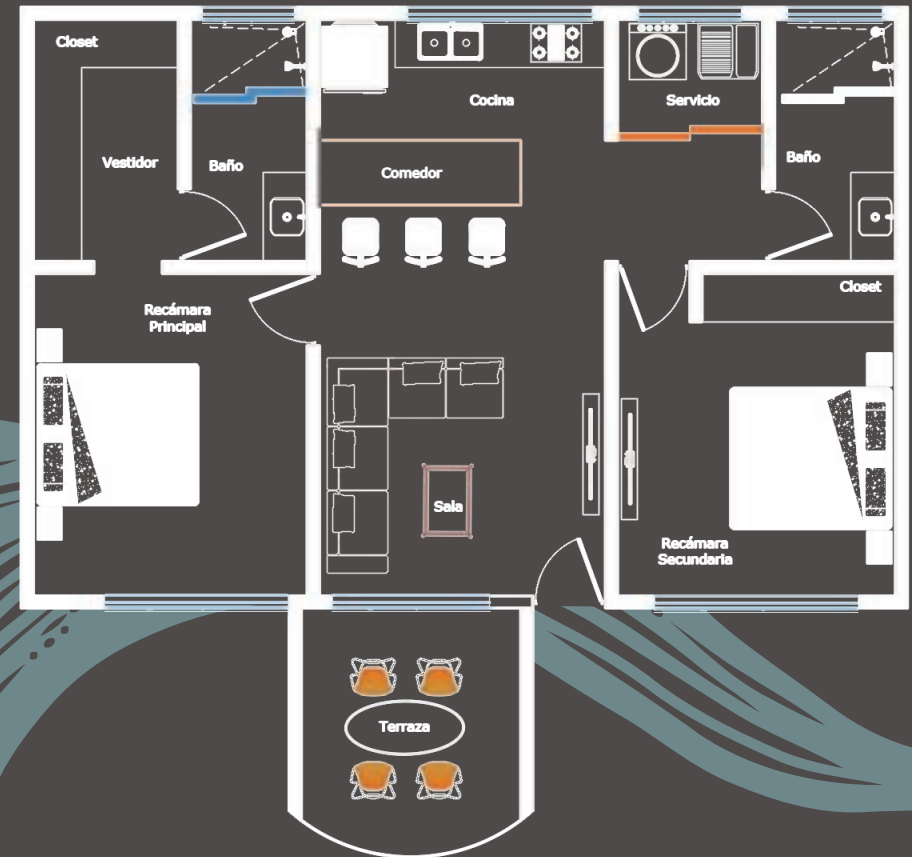
C | 896.84 Sq. ft.



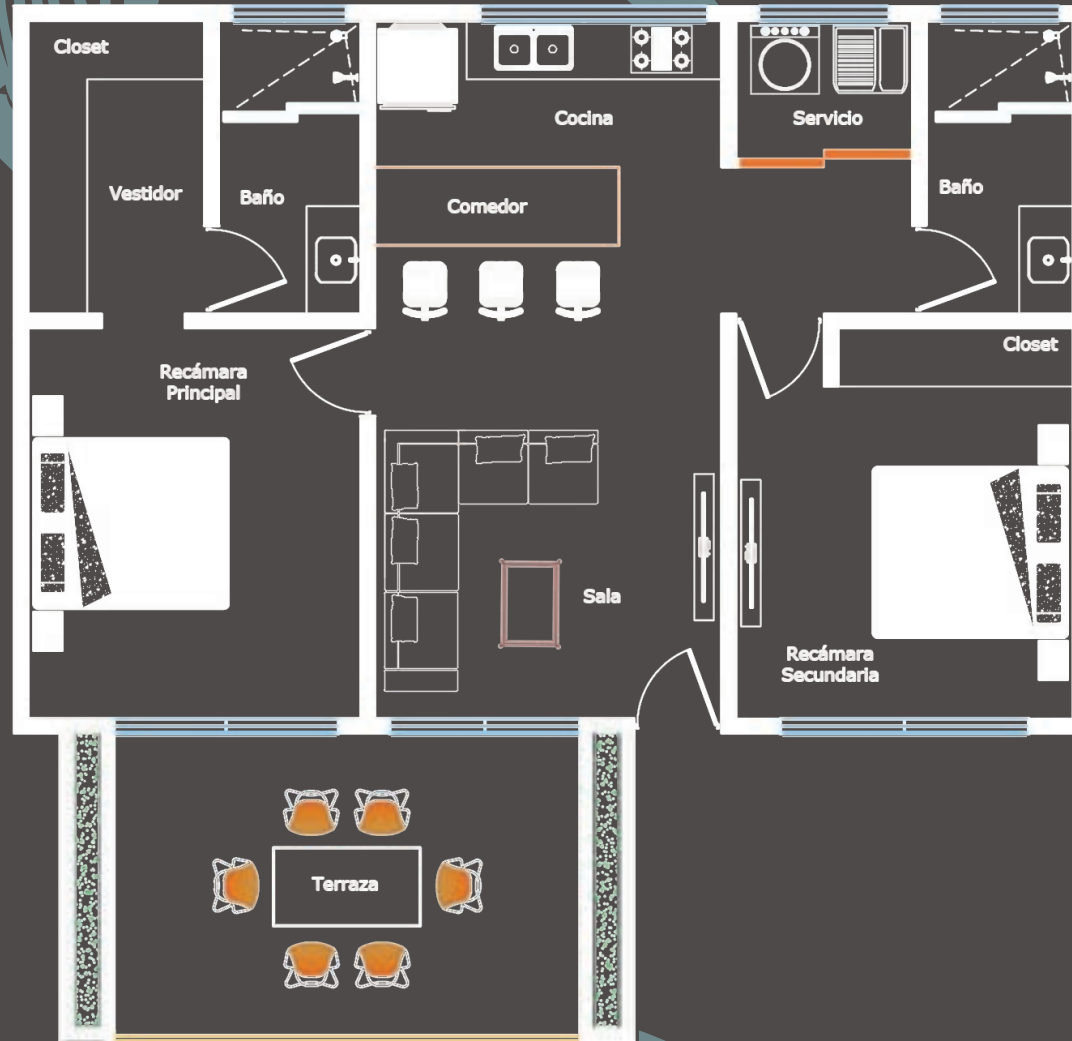
D | 949.37 Sq. ft.



E | 975.85 Sq. ft.



F | 1081.34 Sq. ft.



Chukum finishes, Mayan stone in exteriors and interior walls, black stone in exterior areas.

Each department has electrical installations in the kitchen and a water heater, they are also equipped with fans, LED light lamps, and air conditioning.



YOUR SPACE, YOUR DESIGN, YOUR ESSENCE

Customize your kitchen
choosing between two options.

*As a launch bonus blinds are included.





A modern living room with a white sectional sofa, a large circular wall sculpture, and a coffee table. The room features a stone fireplace on the left, a ceiling fan, and a framed picture on the right wall.

ROI RETURN ON INVESTMENT

We maximize your return on investment with our vacation rental administration and management service.

Estimated yields ranging from 10% to 12% per year.



ENJOY THE BEST BEACH CLUBS

Tulum is characteristic for its incredible and exclusive beach clubs.

That is why celebrities, investors and world-class entrepreneurs come to live the holistic and festive experience.

Being part of Naj Ha 'gives you an exclusive membership with access to some of the top beach clubs in Tulum.



EVERYONE WANTS TO BE IN TULUM, BUT YOU ARE ONE STEP AWAY FROM GETTING IT.



