

A H A W E L

H A B I T A T

O F

B E I N G



AHAWEL is a sustainable luxury project, inspired by the natural and cultural riches that have made Tulum a paradise.

Ahawel's structure and design harmonize with its surroundings in such a way that it seems to have emerged from our Mayan ancestors. This beautiful and modern development is a refuge for you to connect soul and body, surrounded by beautiful natural and architectural landscapes.

WOULD YOU LIKE TO GENERATE THE INVESTMENT THAT ENSURE YOUR FUTURE AND THAT OF YOUR FAMILY?

Ahawel

AHAWEL is a sustainable luxury project, inspired by the natural and cultural riches that have made Tulum a paradise.

IN ADDITION TO HAVING EXCLUSIVE AMENITIES FOR YOU TO CONNECT WITH BODY AND SOUL, WHILE ENJOYING THE QUALITY OF LIFE THAT THE DEVELOPMENT OFFERS.

A H A W E L

LOCATION

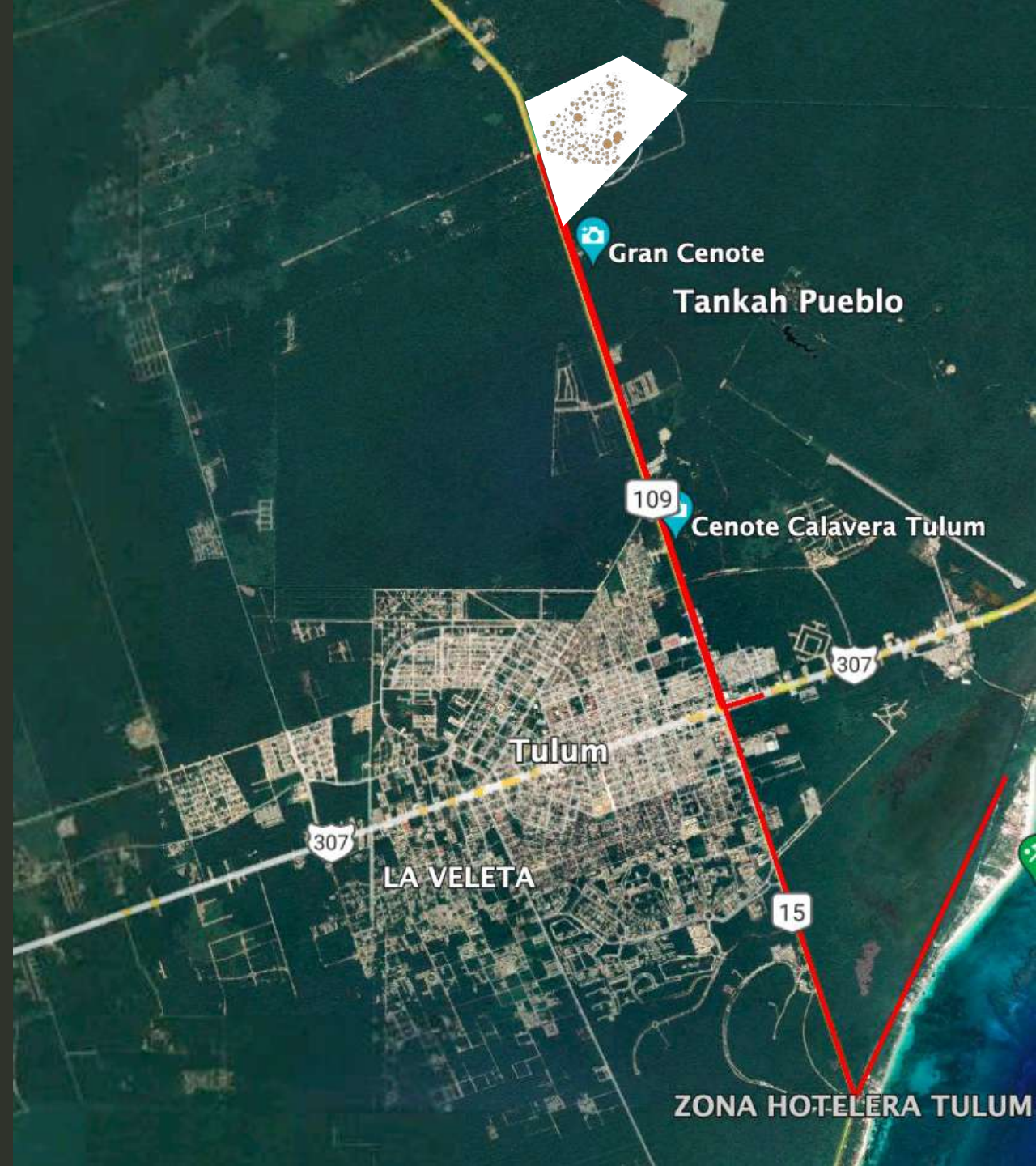
Ahawel, is located in a key geographical location to grant:

- Quality of life
- Capital gain
- Constant returns.

It is located just a few minutes from the most strategic points of Tulum.

- 4.8 km from Hospitals
- 4.8 km from Supermarkets
- 6.8 km from Tulum Ruins
- 7.6 km from the Hotel Zone of Tulum

Ahawel

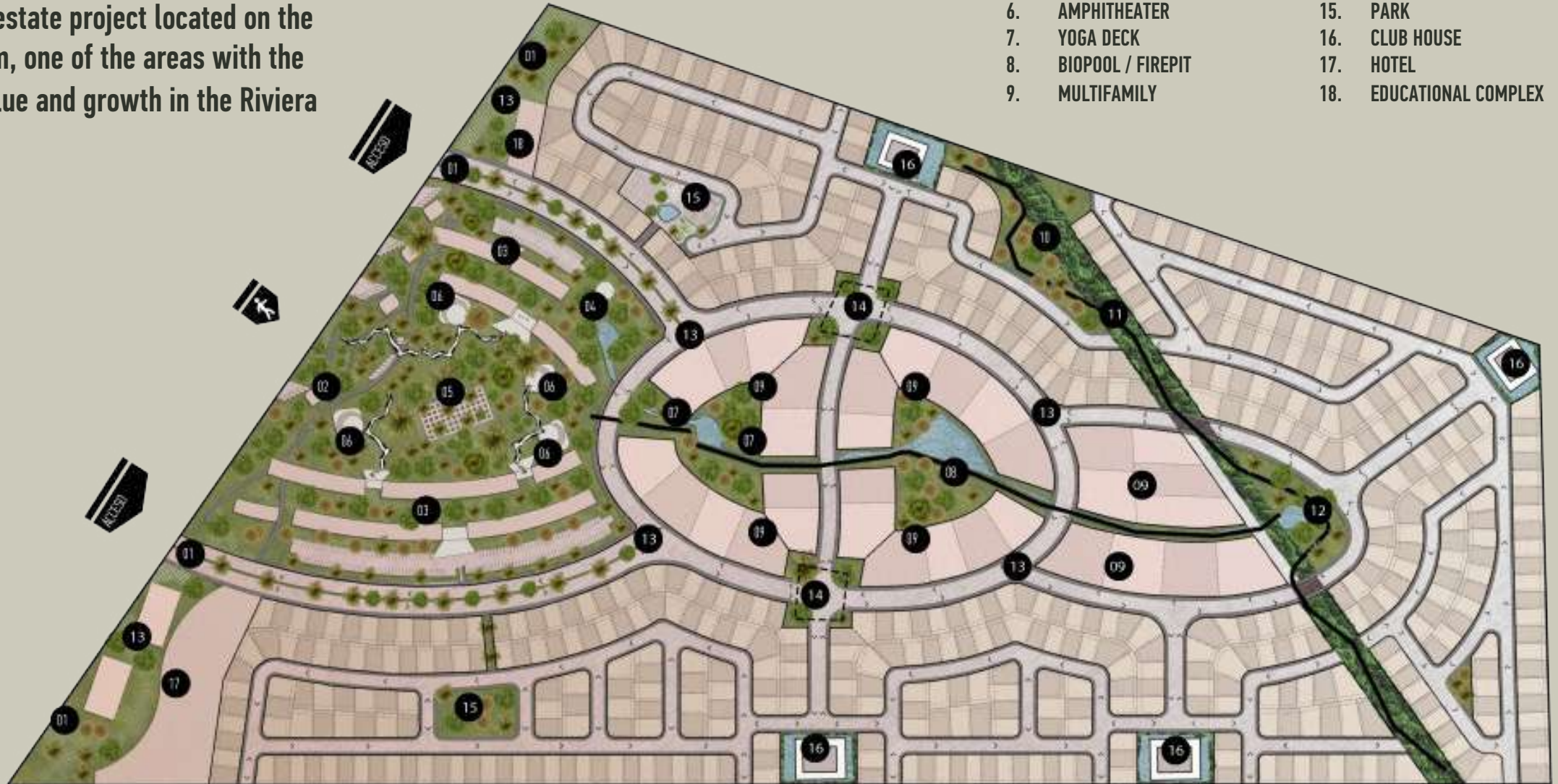


GENERAL SET



Ahawel is a real estate project located on the outskirts of Tulum, one of the areas with the highest added value and growth in the Riviera Maya.

- | | | | |
|----|---------------------|-----|---------------------|
| 1. | ACCESS | 10. | LINEAR PARK |
| 2. | GYPSY MARKET STANDS | 11. | PEDESTRIAN AXIS |
| 3. | TRADE | 12. | ORCHARDS |
| 4. | CENOTE SQUARE | 13. | MOBILITY NODES |
| 5. | EXPLORATION PORTAL | 14. | ACCESS HOUSES |
| 6. | AMPHITHEATER | 15. | PARK |
| 7. | YOGA DECK | 16. | CLUB HOUSE |
| 8. | BIPOOL / FIREPIT | 17. | HOTEL |
| 9. | MULTIFAMILY | 18. | EDUCATIONAL COMPLEX |





**A PREMIUM, INNOVATIVE AND SUSTAINABLE DEVELOPMENT
THAT CONNECTS WITH TRANQUILITY AND NATURAL AND ARCHITECTURAL BEAUTY.**



ORGANIC

COMMERCE
AREA



EXPLORATION PORTAL

● **ACCESS HOUSES**

● **SHOPS**

● **HOTEL**

● **OBSERVATORY**

● **ORCHARDS**

● **EDUCATIONAL COMPLEX**

● **BIOPOOL / FIREPIT**

● **GREEN AREAS**





MASTER PLAN



CLUSTER A



**CONNECT BODY AND SOUL IN A DEVELOPMENT WITH THE PERFECT
BALANCE BETWEEN NATURAL BEAUTY AND HIGH VALUE**

Wavel

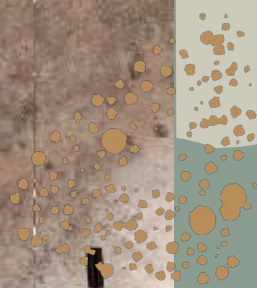


**INSPIRATION
PORTAL**

LOOKOUT



Abanuel



GYM

An aerial view of a lush tropical resort. The scene is dominated by dense green foliage and tall trees. A network of stone-paved paths winds through the landscape, connecting various terraced levels. In the background, several buildings with earthy, reddish-brown walls and dark roofs are visible, partially obscured by the trees. The lighting is soft and natural, suggesting a bright but slightly overcast day. The overall atmosphere is one of a serene and well-maintained natural environment.

A H A W E L

**YOUR INVESTMENT, IN ONE OF THE MOST EXCLUSIVE
AND INNOVATIVE COMMUNITIES OF TULUM**