



The Leaf

CONDOS PLAYACAR







Playacar: A Community that coexists with Nature



South of Playa del Carmen's urban area and next to the beginning of the famous 5th Avenue is the exclusive residential-touristic complex Playacar, which enjoys the highest value of the Riviera Maya.

Recognized as the most prestigious development in the heart of the Riviera Maya, inside it you'll find the best hotels, shopping malls, retail, restaurants, golf course and the most exclusive and safest residential developments in the area, integrated to a tropical environment achieving a habitat in harmony with nature.

Living in Playacar is something unique, you can visit the spectacular aviary, take a tour in the archaeological zones, ride a bicycle in its extensive cycle tracks throughout the complex or enjoy one of the most exclusive beaches in the area.



Location

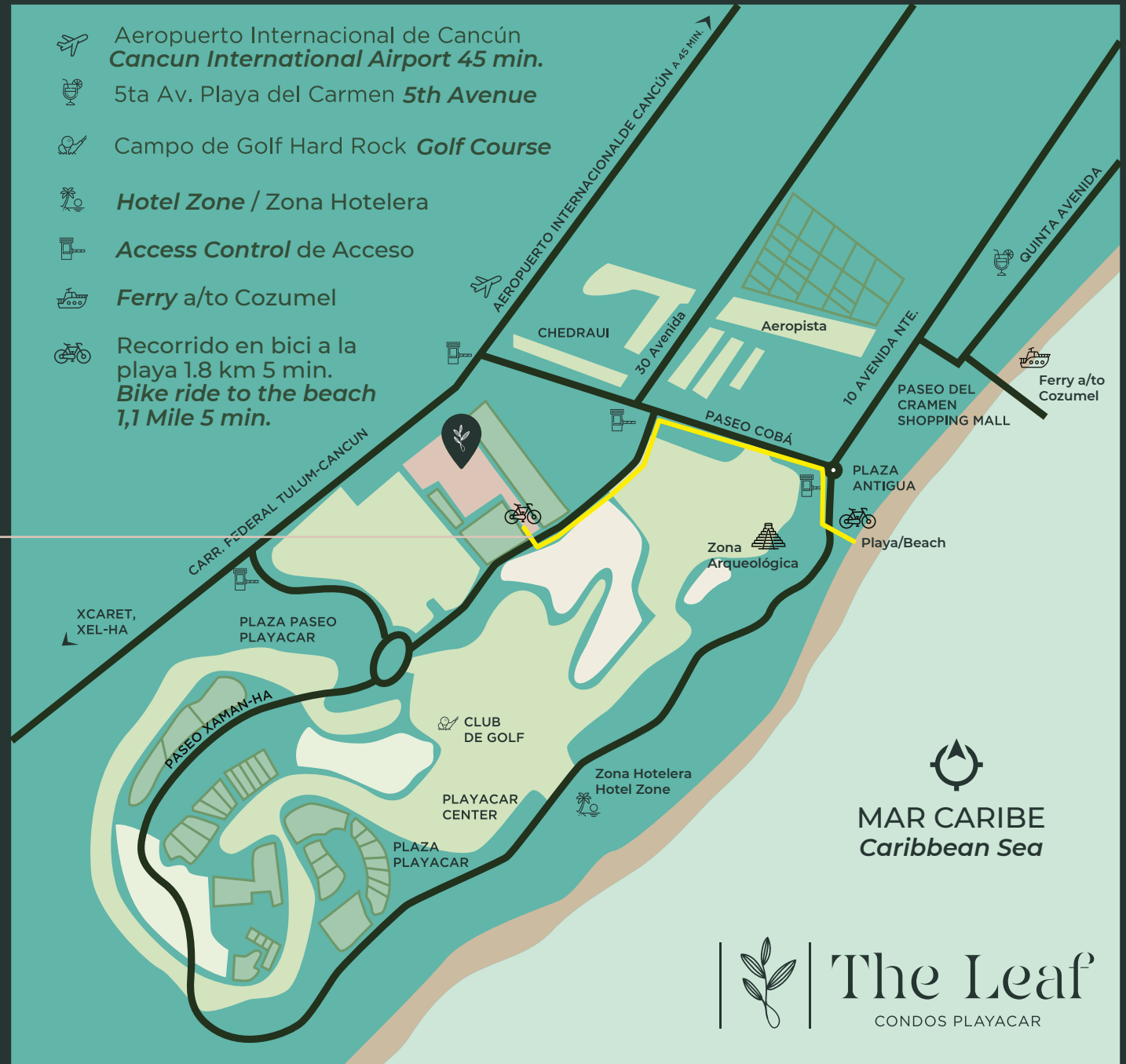




The Leaf

CONDOS PLAYACAR

-  Aeropuerto Internacional de Cancún
Cancun International Airport 45 min.
-  5ta Av. Playa del Carmen **5th Avenue**
-  Campo de Golf Hard Rock **Golf Course**
-  **Hotel Zone / Zona Hotelera**
-  **Access Control de Acceso**
-  **Ferry a/to Cozumel**
-  Recorrido en bici a la playa 1.8 km 5 min.
Bike ride to the beach 1,1 Mile 5 min.



MAR CARIBE
Caribbean Sea



The Leaf

CONDOS PLAYACAR



Master Plan

- ACCESS AND PARKING
 - 1 Main Vehicle Access
 - 2 Pedestrian Access
 - 3 Parking
 - 4 Bicycle and motorcycle parking
 - 5 Reception
- POOL AND SUNBEDS
 - 6 Pool I
 - 7 Pool II
 - 8 Pool III
 - 9 Pool IV
- AMENITIES
 - 10 GYM
 - 11 Cold Bar Restaurant
 - 12 Roof Top
 - 13 Children's Playground
 - 14 Jogging Track
 - 15 Hiking Area
 - 16 Outdoor Yoga Zone
 - 17 Pet Zone
- CONDO TOWERS
 - 18 Tower A
 - 19 Tower B
 - 20 Tower C
 - 21 Tower D



1
2

4

3

5

21

8

11

10

12

9

19

14

20

7

16

17

15

13

3

6

3

18

3

4







The Leaf Style

The lifestyle style at **The Leaf Condos Playacar** offers you services to live unique experiences:



Controlled access gate,
24/7 security



Concierge, that will be aware of all your
needs.



Parking for cars, bicycles and motorcycles.



Pet friendly community, where we will
take care of your pets.



Digital equipment in all units and high
speed wifi.



Elevators in each tower



The Leaf Amenities

We have created a new concept where the amenities are a fundamental part of daily life to offer enriched experiences to your stay, without leaving the development.

The complex has an extensive garden area of 1.08 acres designed to make the exterior a space for rest, coexistence, relaxation and recreation, always thinking about comfort and satisfaction.

 3 large central pools


 Sunbeds

 Children's playground

 Jogging track

 Gym

 Terrace Bar

 Children's pool

 Yoga Area

 Pet Zone

 Relaxation area

 Restaurant





Unique experiences

We created a level of comfort so you can enjoy great moments, with a clubhouse located in the heart of the residential with a 360° view of the green areas and swimming pools. With an avant-garde design that begins from its lobby, you can enjoy the restaurant, terrace bar and air-conditioned gym.



Relax

Find the harmony between your body and your mind; enjoy health and wellness, as well as a relaxation experience, healing and peace in spaces endowed with natural beauty and fullness.



Exercise

Take care of yourself and maintain an active lifestyle. Practice physical activities in premium facilities. We have areas where you will have everything at hand of what you need to train, forget the routine and feel refreshed.





Share

Give yourself a break from the everyday life and share with your loved ones. We include a Clubhouse to create unforgettable moments where you will find everything you need for a day of memorable relaxation.



Have Fun

Spend hours of fun with the little ones in our areas designed especially for your fun. In addition, a especially designed pool for them we will have children's games so that the fantastic moments with your kids become part of your experience.







The Leaf

CONDOS PLAYACAR









The Leaf

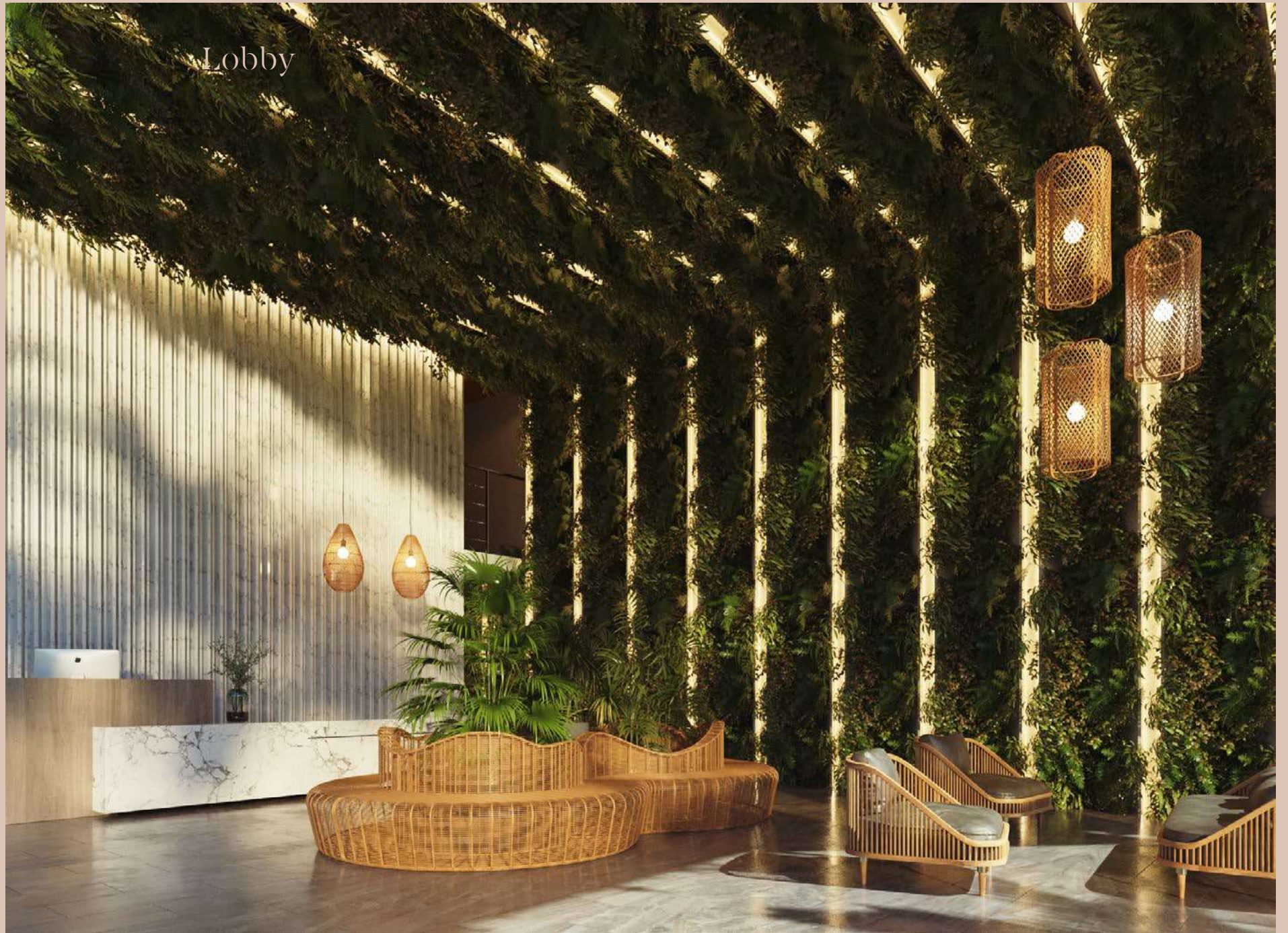
CONDOS PLAYACAR







Lobby



Typologies

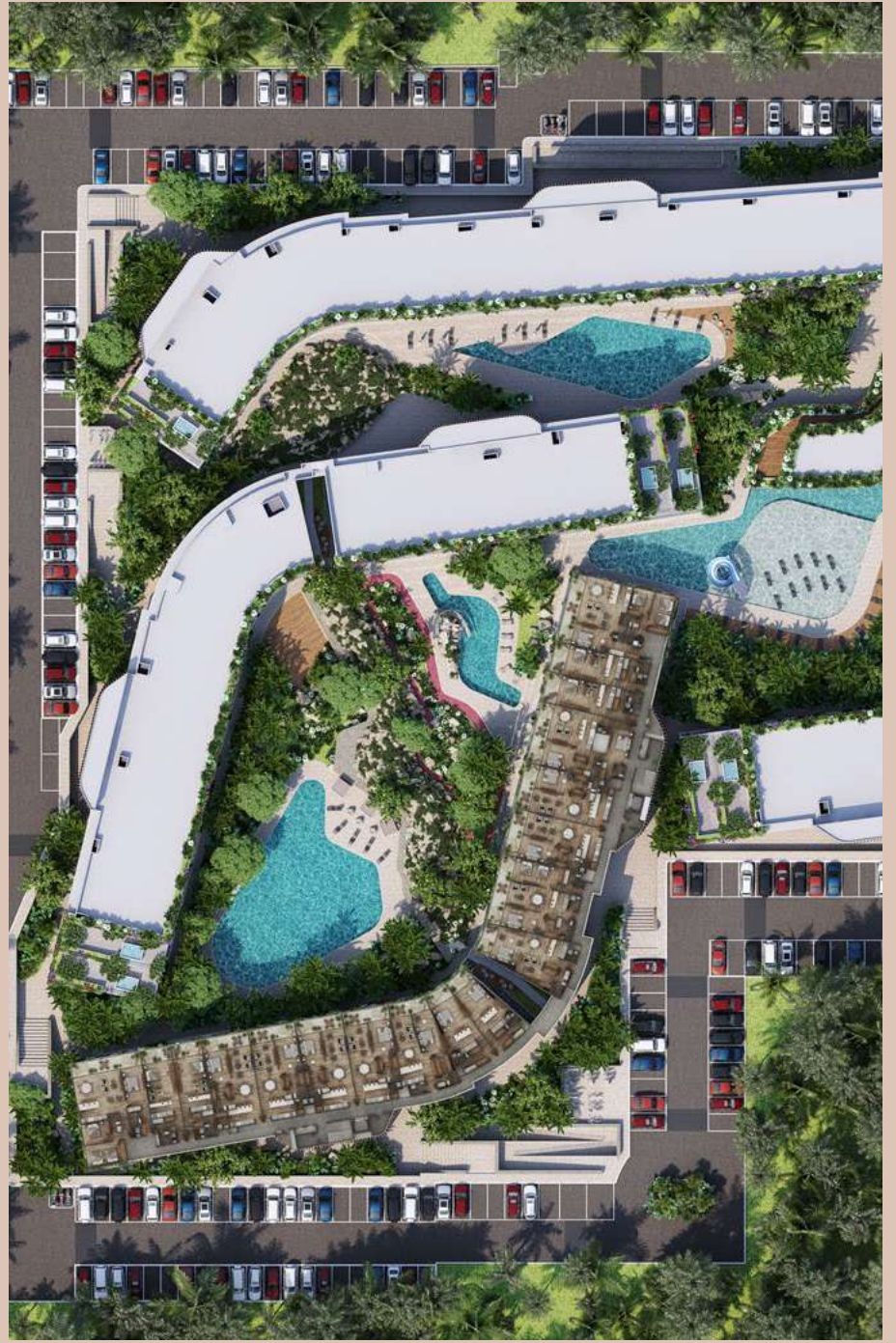




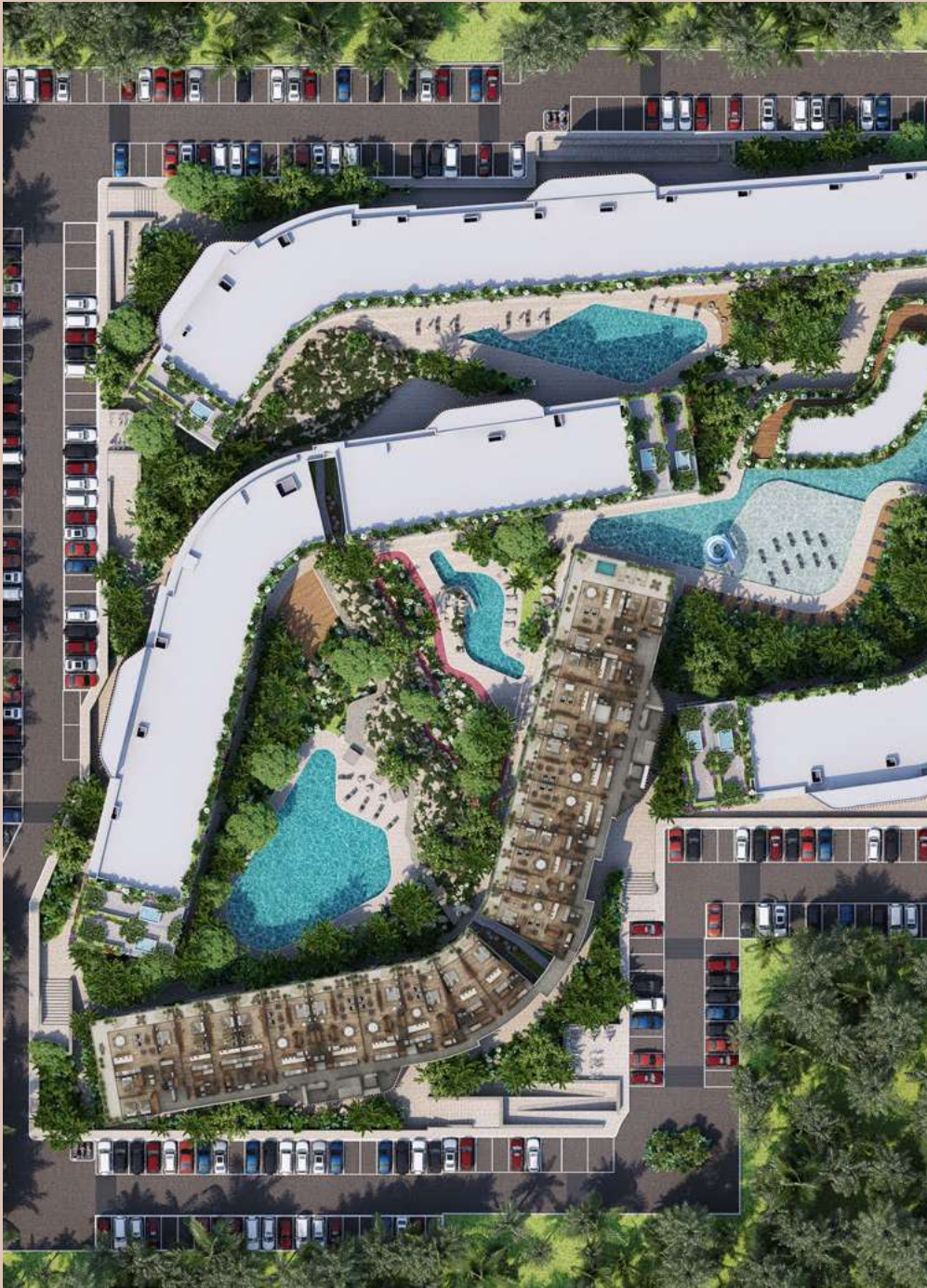
Tower A



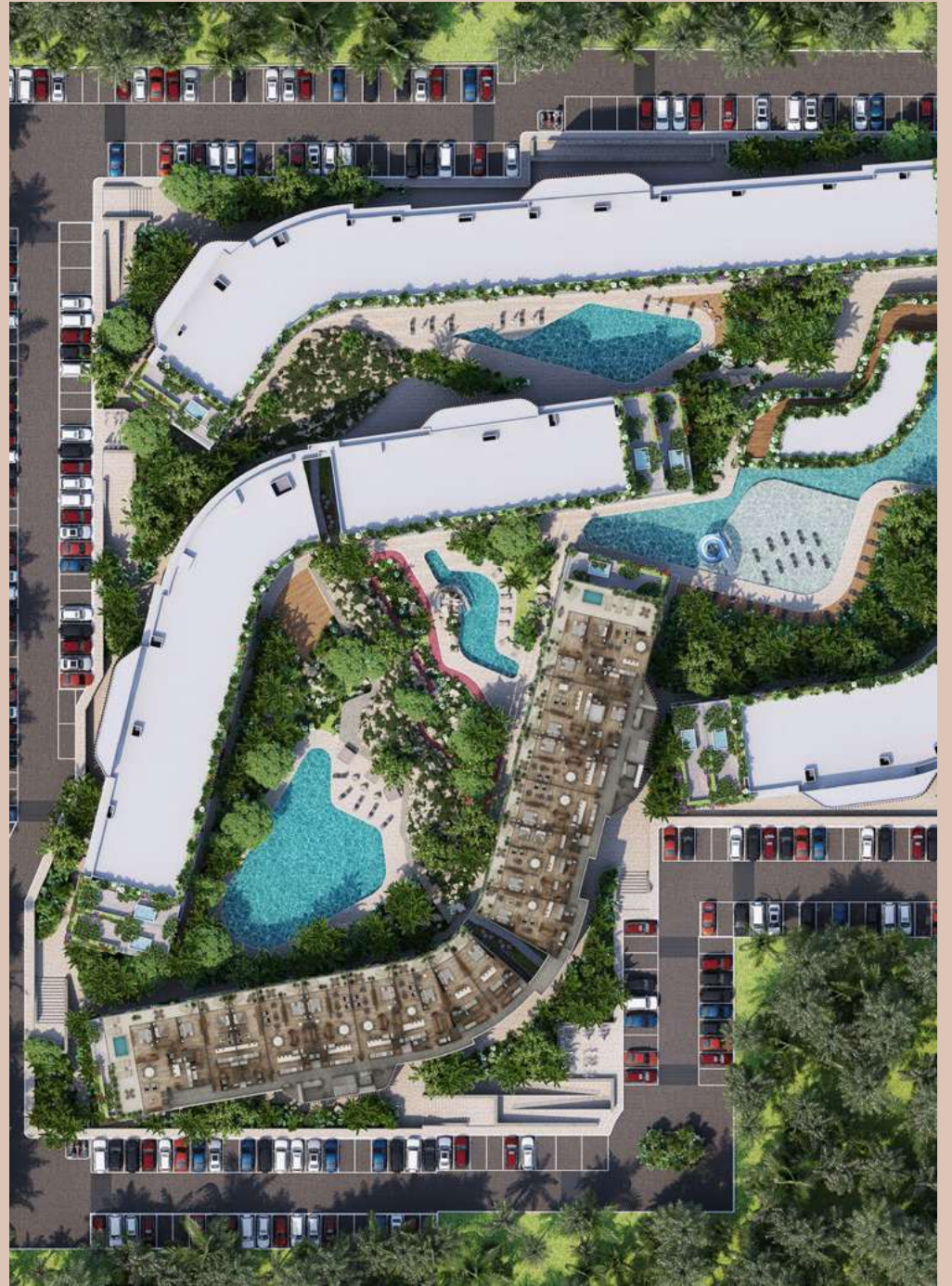
Ground Floor



Level 1



Level 2

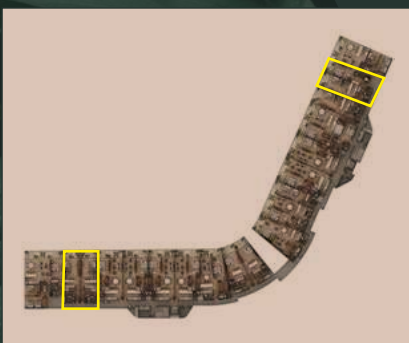


Level 3

Type A

Locations

- Ground Floor
- Level 1
- Level 2
- Level 3



Interiors: 538 sqft



Exteriors: 118 sqft



TOTAL: 656 sqft



1 Bedroom



Bathroom



Kitchen



Terraza

Type A1

Locations

- Ground Floor
- Level 1
- Level 2
- Level 3



Interiors: 538 sqft



Exteriors: 86 sqft



TOTAL: 624 sqft



1 Bedroom



Bathroom



Kitchen



Terraza

Type B

Locations

- Ground Floor
- Level 1
- Level 2
- Level 3



Interiors: 775 sqft



Exteriors: 139 sqft



TOTAL: 914 sqft



1 Bedroom



Living Room



Dining Room



Kitchen



Bathroom



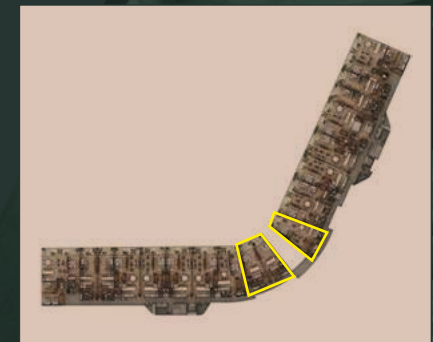
Terraza

Type B1



Locations

- Ground Floor
- Level 1
- Level 2
- Level 3



Interiors: 785 sqft



Exteriors: 96 sqft



TOTAL: 882 sqft



1 Bedroom



Bathroom



Kitchen

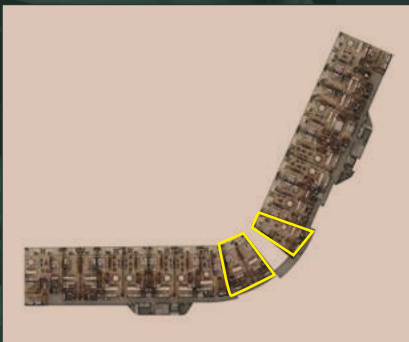


Terraza

Type B2

Locations

- Ground Floor
- Level 1
- Level 2
- Level 3



Interiors: 828 sqft



Exteriors: 118 sqft



TOTAL: 947 sqft



1 Bedroom



Living Room



Dining Room



Kitchen



Bathroom



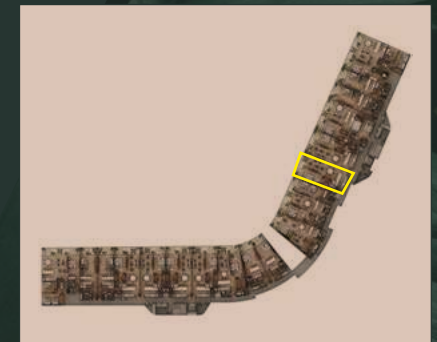
Terraza

Type C



Locations

- Ground Floor
- Level 1
- Level 2
- Level 3



Interiors: 1,076 sqft



Exteriors: 204 sqft



TOTAL: 1,280 sqft



LOCK-OFF



2 Bedrooms



Living Room



Dining Room



Kitchen



2 Bathrooms

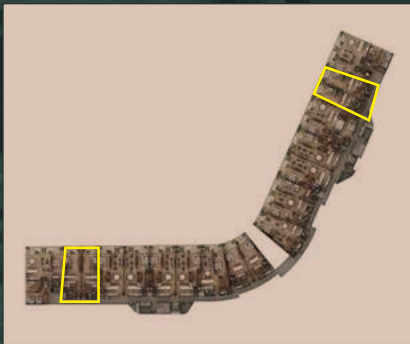


Terraza

Type C1

Locations

- Ground Floor



Interiors: 1,033 sqft



Exteriors: 182 sqft



TOTAL: 1,216 sqft



LOCK-OFF



2 Bedroom



Dining Room



2 Bathrooms



Living Room



Kitchen



Terraza

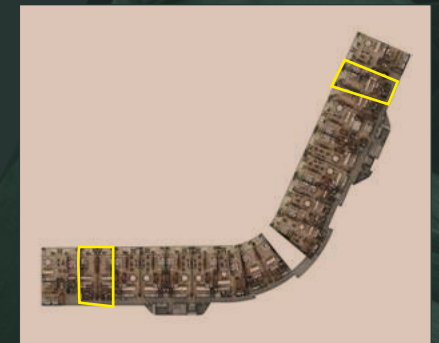
Type C2



NEPTA TIPO C2

Locations

- Level 1
- Level 2
- Level 3



Interiors: 1,033 sqft



Exteriors: 182 sqft



TOTAL: 1,216 sqft



LOCK-OFF



2 Bedrooms



Living Room



Dining Room



Kitchen



2 Bathrooms

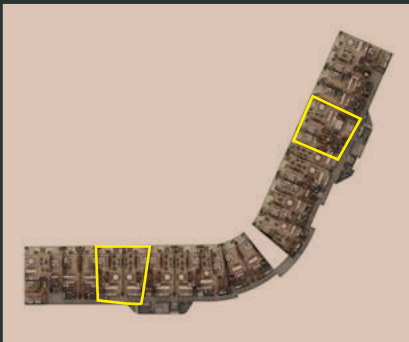


Terraza

Type D

Locations

- Ground Floor
- Level 1



Interiors: 1,227 sqft



Exteriors: 204 sqft



TOTAL: 1,431 sqft



LOCK-OFF



3 Bedrooms



Living Room



Dining Room



Kitchen



2 Bathrooms

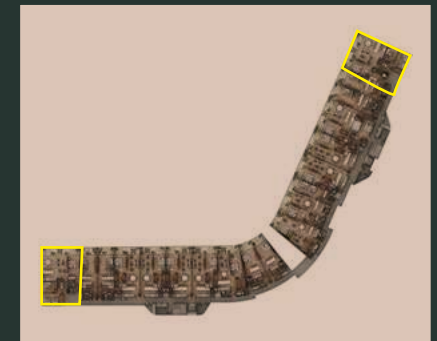


Terraza

Type D1

Locations

- Level 2



Interiors: 1,237 sqft



Exteriors: 581 sqft



TOTAL: 1,819 sqft



LOCK-OFF



3 Bedrooms



Living Room



Dining Room



Kitchen



2 Bathrooms

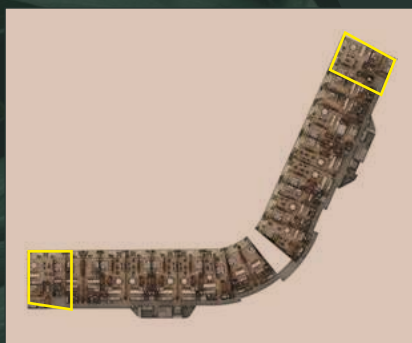


Terrace with con Plunge Pool

Type D2

Locations

- Level 2



Interiors: 1,280 sqft



Exteriors: 828 sqft



TOTAL: 2,109 sqft



LOCK-OFF



3 Bedrooms



Living Room



Dining Room



Kitchen



2 Bathrooms



Terrace with con Plunge Pool

The life, The Love


The Leaf
CONDOS PLAYACAR





