



∞ Tulum

2070



Tulum, Quintana Roo, Mexico



The image presented is for illustrative purposes only and may change without notice during the construction process.

∞Tulum

Community

∞ Tulum arrives as a proposal for collective spaces, where the user can enjoy an harmonic, comfortable and efficient housing.

A project that expresses a new housing model in Tulum.



8

TULUM

Archaeological Zone

New International Airport

Cenote Escondido

Neighborhood Center Chedraui

Cenote Mayan Blue

Holistika

AV. COBÁ

Hotel Zone

CANCÚN-COZUMEL HIGHWAY

AV. KUKULCAN

CARIBBEAN SEA



LOCATION

- 15 minutes to Hotel Zone
- 5 minutes to Tulum Downtown
- 20 minutes to Archaeological Zone
- 20 minutes to the new International Airport



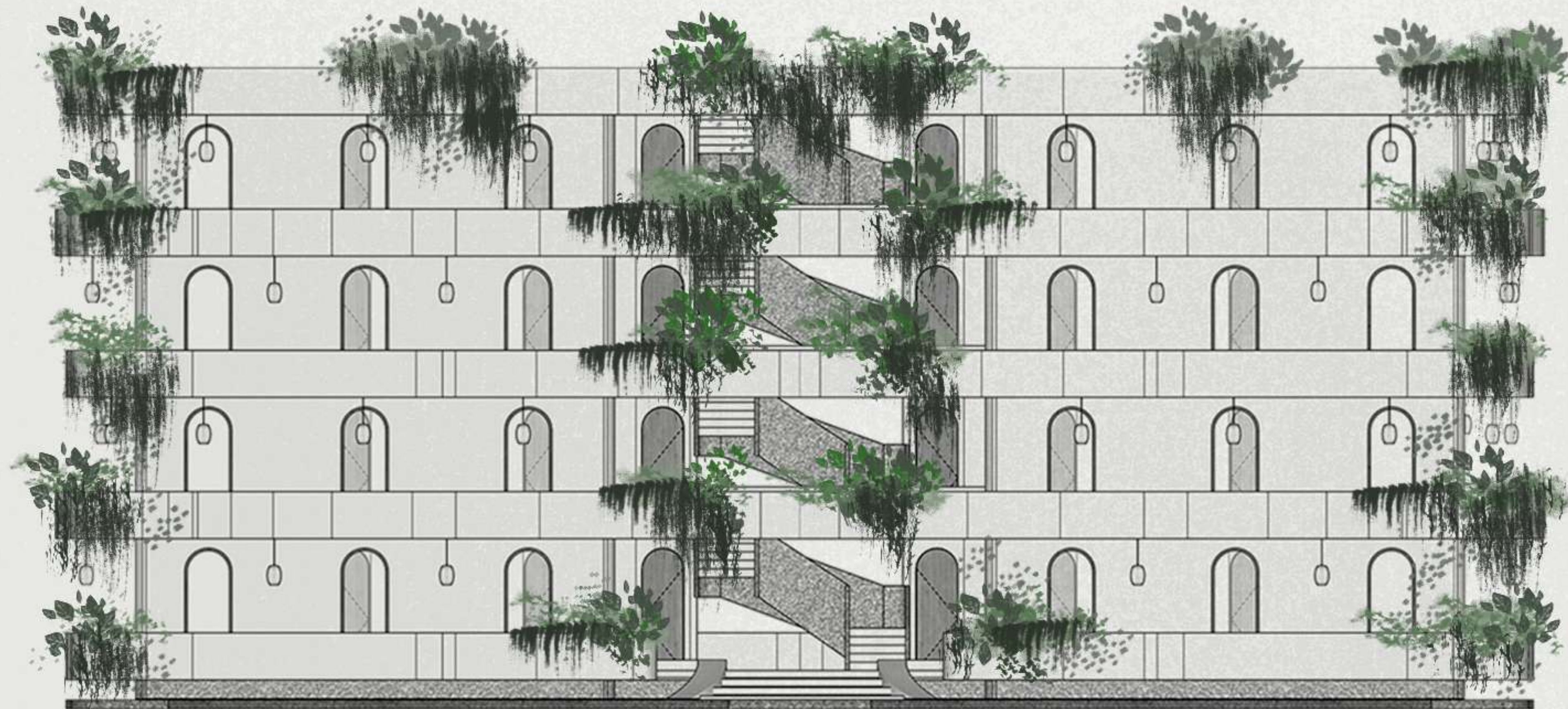
The image presented is for illustrative purposes only and may change without notice during the construction process.

∞ Tulum

The word "Coexist" is written in a clean, black, sans-serif font. To the left of the 'C' are three overlapping, hand-drawn loops. To the right of the 't' is a single hand-drawn circle. Below the 'o' and 'e' is a hand-drawn starburst shape.

Coexist

∞ Tulum is a place where we coexist harmoniously with the environment, where we take advantage of the connectivity and flexibility of spaces to offer a housing model **innovative, efficient and accessible.**

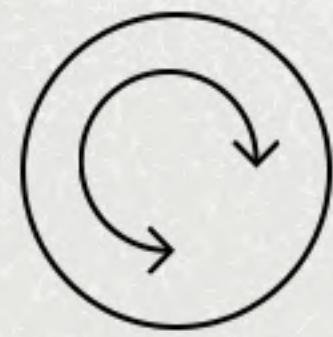


Main Facade
CO tulum



The image presented is for illustrative purposes only and may change without notice during the construction process.


∞Tulum





Confort





We offer to the user a wide range of activities and spaces that develop respect to needs of coexistence and recreation.


 Tulum is everyone's space.


 Grill Area

 Pet Park

 Coworking

 Pools

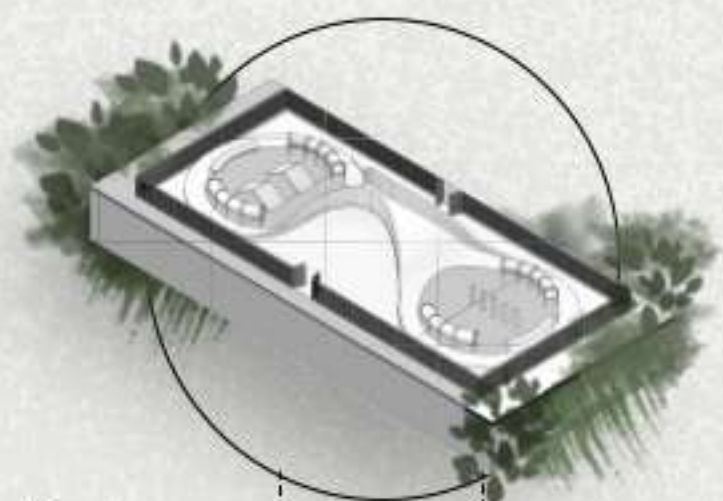
 Sand Field

 Controlled Access

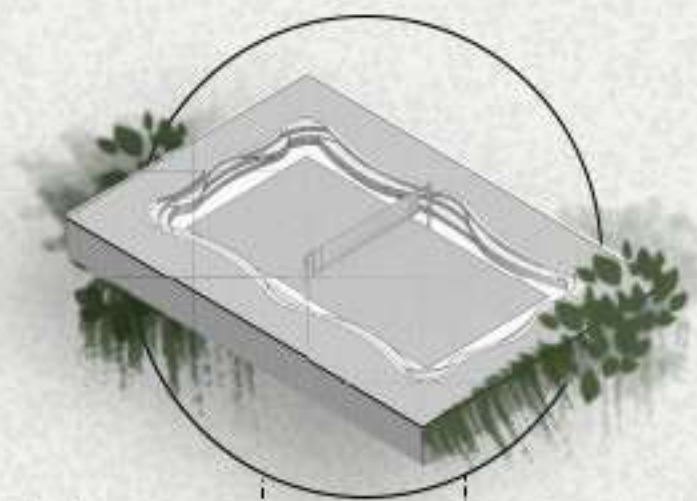
Confort
Amenities



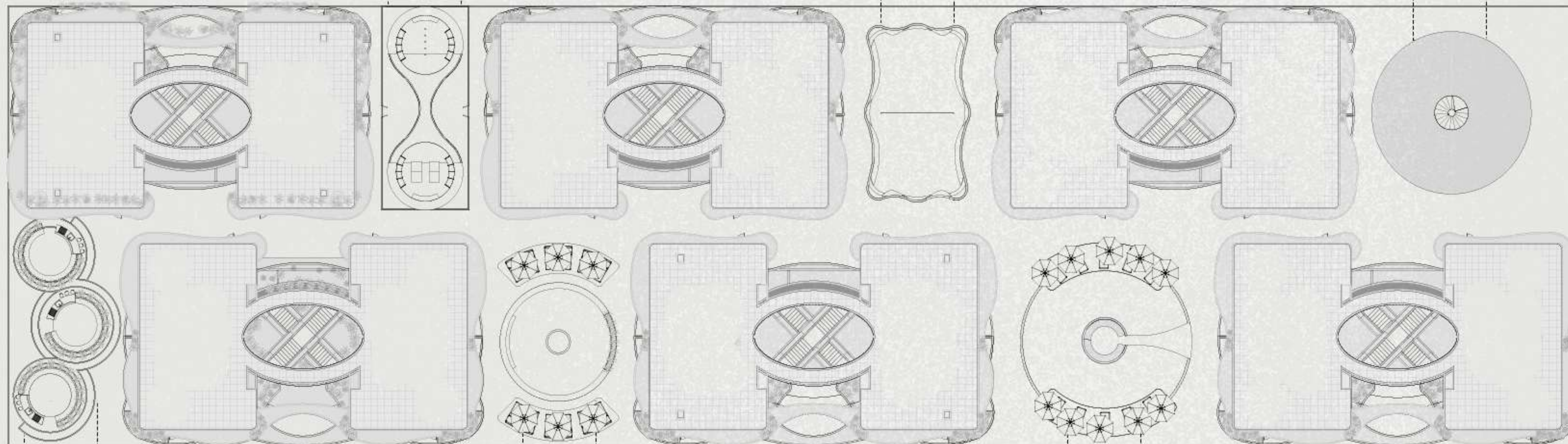
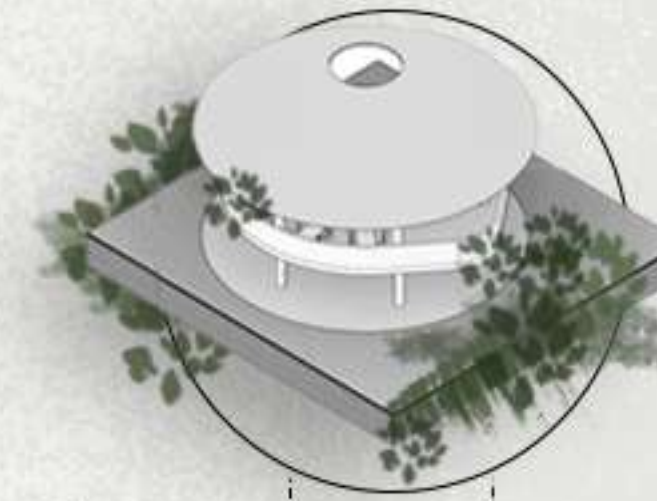
Pet Park



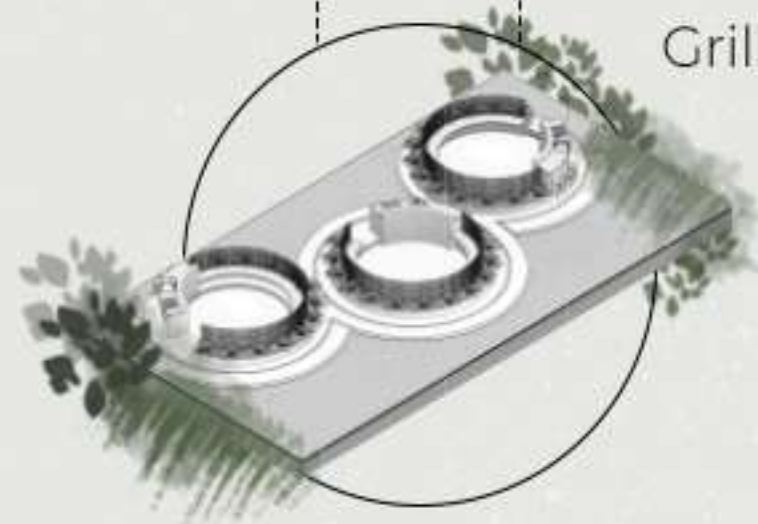
Sand Field



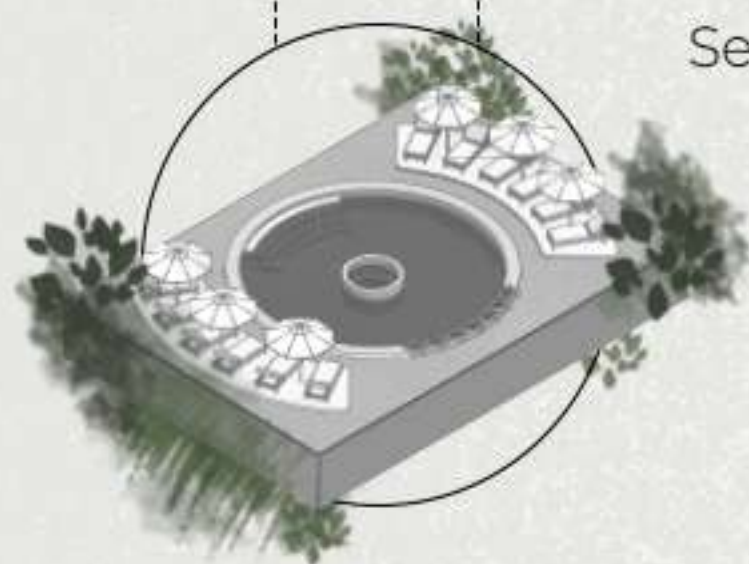
Cowork



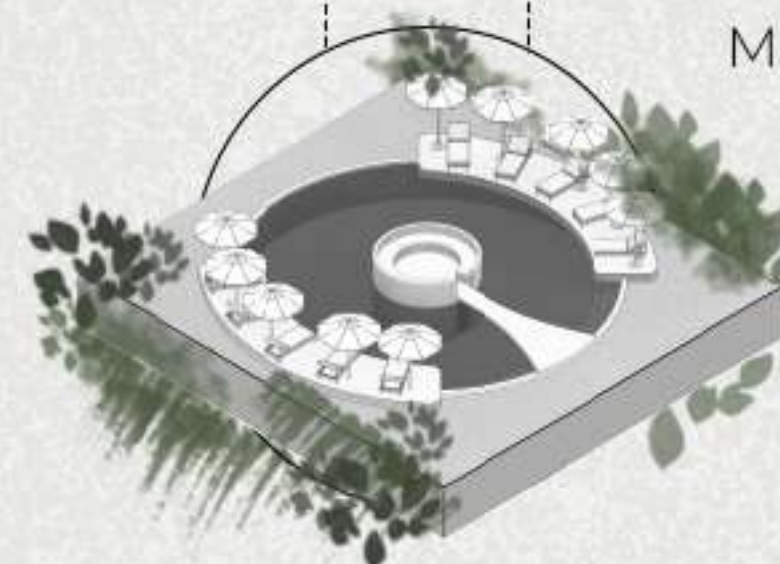
Grill Area

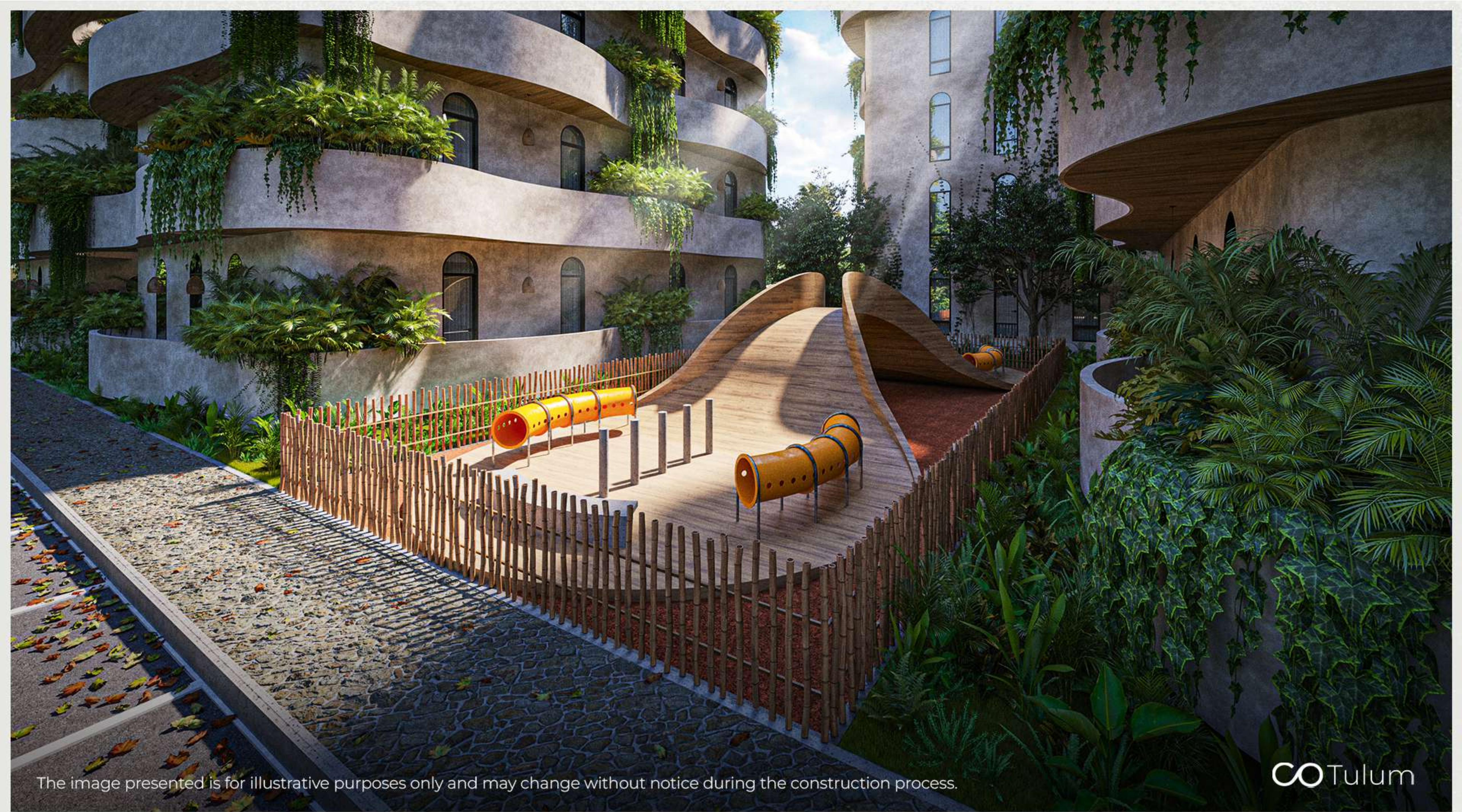


Secondary Pool

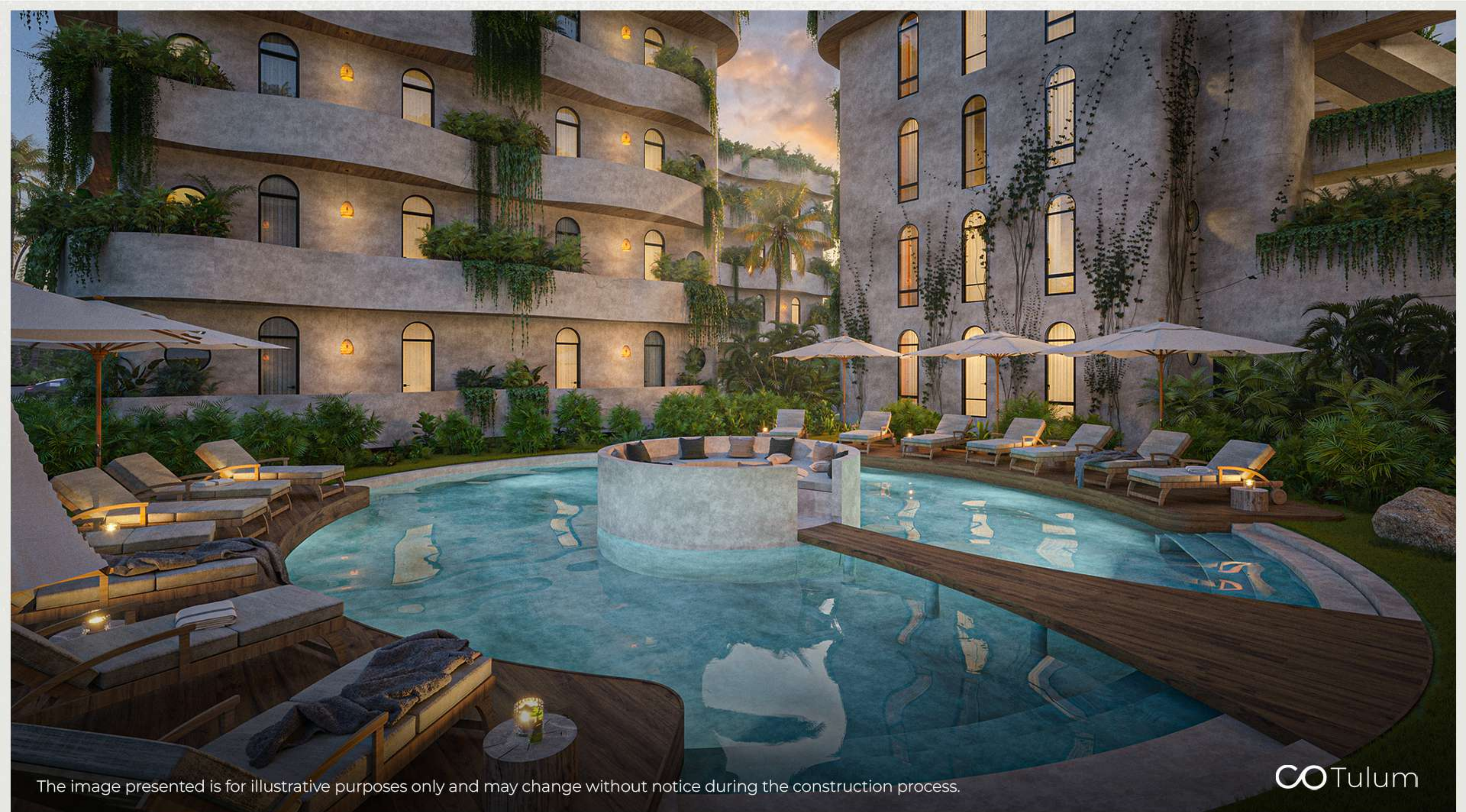


Main Pool





The image presented is for illustrative purposes only and may change without notice during the construction process.



The image presented is for illustrative purposes only and may change without notice during the construction process.

∞ Tulum

Connection

The future of real estate developments.

∞ Tulum is distributed as a complex of 6 towers with 96 Lock-Off 2-bedroom apartments with one or two balconies, which is perfectly suited for a vacation rental model, accessible and profitable.



2 Bedroom *Lock-off Apartment*

Interiors 785.77 sqft

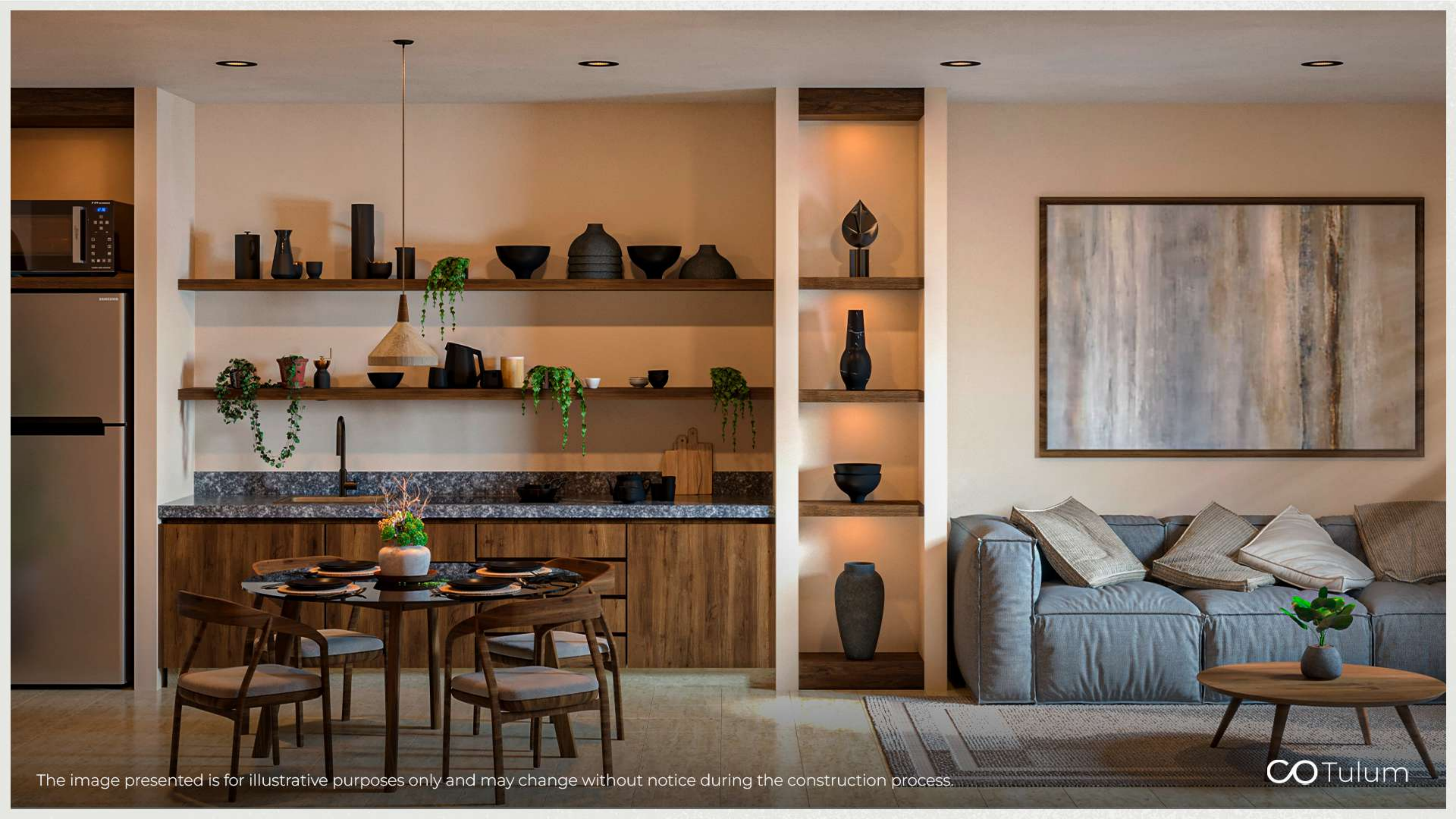
Total areas with:

One balcony 856.26 sqft or 859.28 sqft

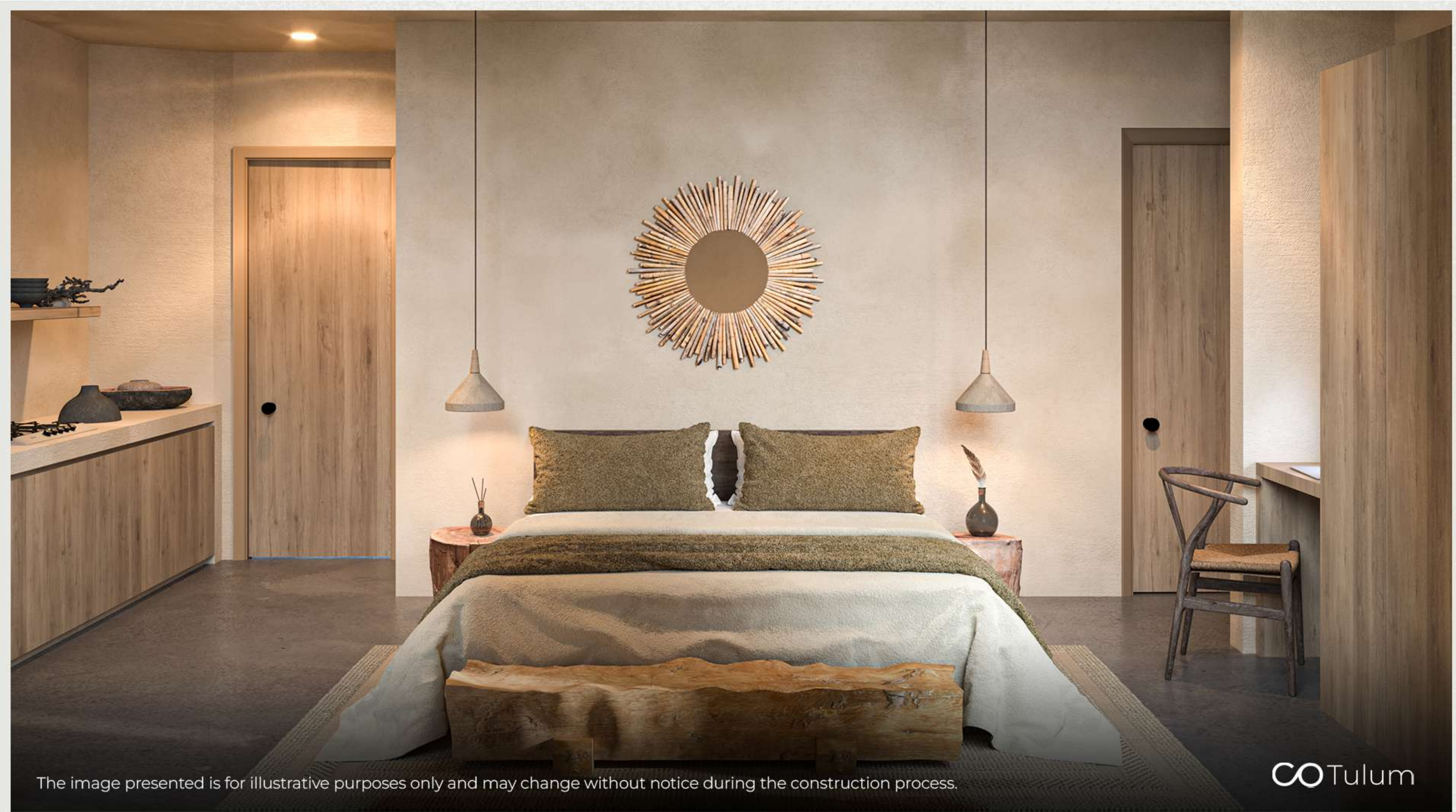
Two balconies 969.18 sqft or 982.20 sqft

- | | |
|---------------|-------------------|
| 1.Access | 8.Lock-off Access |
| 2.Kitchen | 9.Kitchen |
| 3.Dining Room | 10.Lock-off |
| 4.Bathroom | 11.Bathroom |
| 5.Living Room | 12.Balcony |
| 6.Bedroom | 13.Garden |
| 7.Balcony | |

*Ask for the availability of the apartment to your sales representative



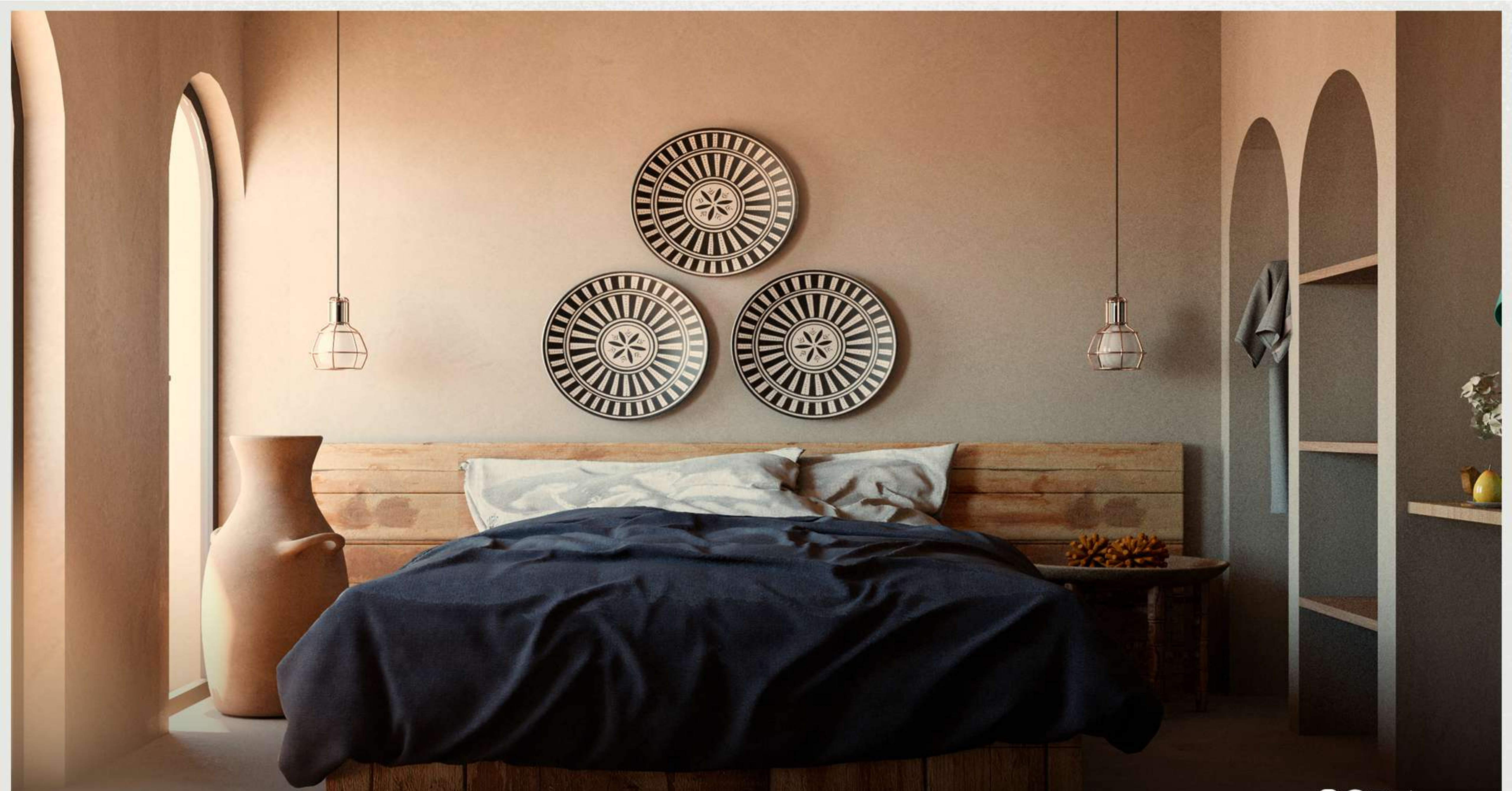
The image presented is for illustrative purposes only and may change without notice during the construction process.



The image presented is for illustrative purposes only and may change without notice during the construction process.

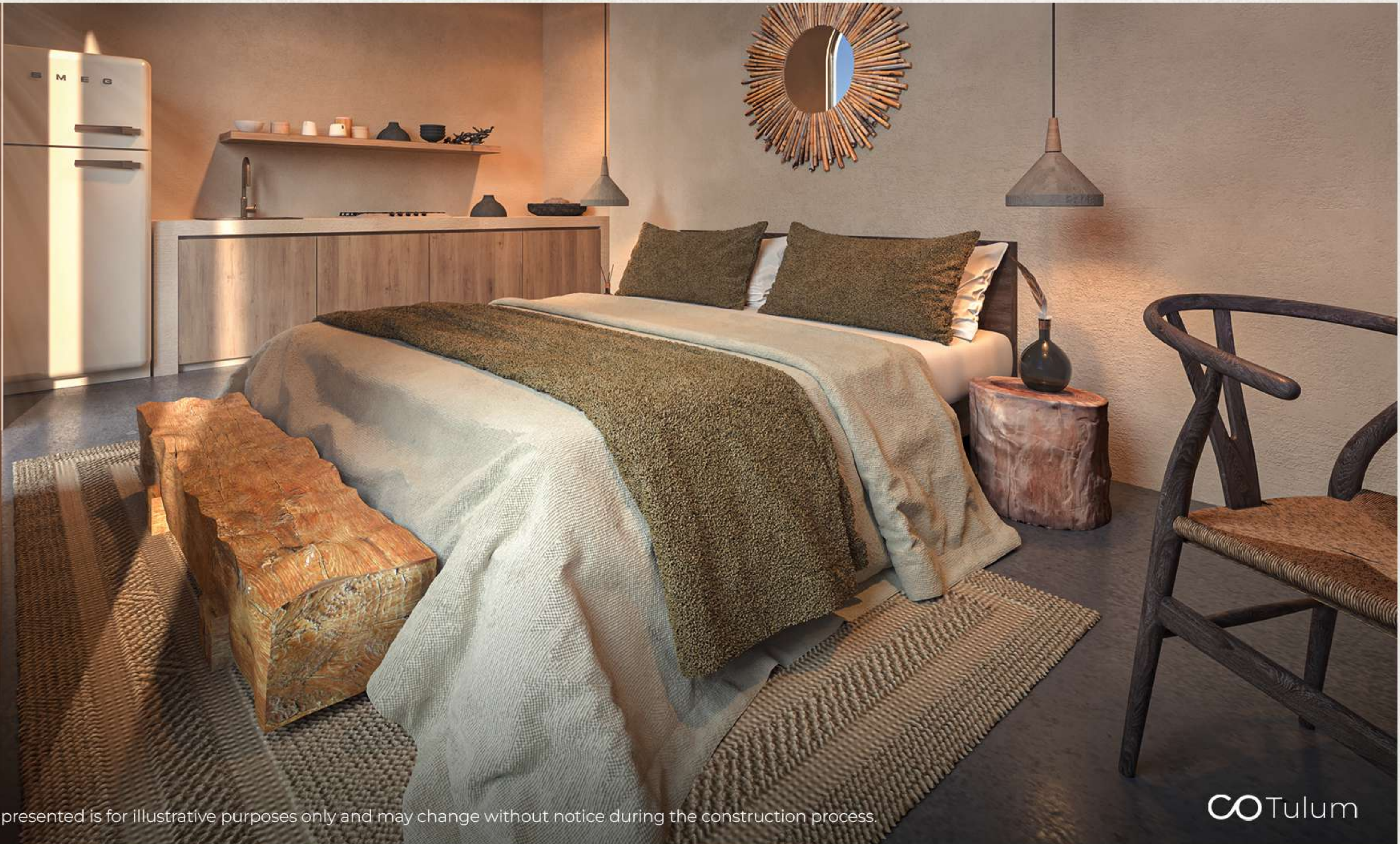


The image presented is for illustrative purposes only and may change without notice during the construction process.



The image presented is for illustrative purposes only and may change without notice during the construction process.

∞Tulum



The image presented is for illustrative purposes only and may change without notice during the construction process.



The image presented is for illustrative purposes only and may change without notice during the construction process.



The image presented is for illustrative purposes only and may change without notice during the construction process.

 Tulum