

# EQUIPAMIENTO BÁSICO / BASIC EQUIPMENT

## TERCERA FASE / THIRD PHASE

### PLANTA BAJA BAJA

UNIDAD / UNIT	TIPOLOGÍA / TYPOLOGY	ÁREA (m <sup>2</sup> )	AREA (ft <sup>2</sup> )	PRECIO / PRICE (\$M.N.)	30% - 40% - 30% (DTO. 4.20%)	30% - 60% - 10% (DTO. 6.30%)	80% - 0% - 20% (DTO. 9.98%)
D-001	Estudio	36.30	390.73	\$2,369,600.00	\$2,270,076.80	\$2,220,315.20	\$2,133,113.92
D-002	1R	39.10	419.90	\$2,458,700.00	\$2,355,434.60	\$2,303,801.90	\$2,213,321.74
D-003	1R	39.10	419.90				
D-004	D-2R (Lock Off)	78.10	840.66	\$4,875,400.00	\$4,670,633.20	\$4,568,249.80	\$4,388,835.08
D-005	D-2R (Lock Off)	78.10	840.66				
D-006	D-2R (Lock Off)	78.10	840.66	\$4,875,400.00	\$4,670,633.20	\$4,568,249.80	\$4,388,835.08
D-007	D-2R (Lock Off)	78.10	840.66	\$4,875,400.00	\$4,670,633.20	\$4,568,249.80	\$4,388,835.08
D-008	1R	39.10	419.90	\$2,458,700.00	\$2,355,434.60	\$2,303,801.90	\$2,213,321.74
D-009	1R	39.10	419.90	\$2,458,700.00	\$2,355,434.60	\$2,303,801.90	\$2,213,321.74
D-010	Estudio	36.30	390.73	\$2,369,600.00	\$2,270,076.80	\$2,220,315.20	\$2,133,113.92
E-001	Estudio	36.30	390.73	\$2,369,600.00	\$2,270,076.80	\$2,220,315.20	\$2,133,113.92
E-002	1R	39.10	419.90	\$2,458,700.00	\$2,355,434.60	\$2,303,801.90	\$2,213,321.74
E-003	1R	39.10	419.90	\$2,458,700.00	\$2,355,434.60	\$2,303,801.90	\$2,213,321.74
E-004	D-2R (Lock Off)	78.10	840.66	\$4,875,400.00	\$4,670,633.20	\$4,568,249.80	\$4,388,835.08
E-005	D-2R (Lock Off)	78.10	840.66				
E-006	D-2R (Lock Off)	78.10	840.66				
E-007	D-2R (Lock Off)	78.10	840.66				
E-008	1R	39.10	419.90	\$2,458,700.00	\$2,355,434.60	\$2,303,801.90	\$2,213,321.74
E-009	1R	39.10	419.90	\$2,458,700.00	\$2,355,434.60	\$2,303,801.90	\$2,213,321.74
E-010	Estudio	36.30	390.73	\$2,369,600.00	\$2,270,076.80	\$2,220,315.20	\$2,133,113.92

 Disponible

 Reservado

 Vendido

 No disponible

# EQUIPAMIENTO BÁSICO / BASIC EQUIPMENT TERCERA FASE / THIRD PHASE

## PLANTA BAJA BAJA



 Disponible

 Reservado

 Vendido

 No disponible

# EQUIPAMIENTO BÁSICO / BASIC EQUIPMENT

## TERCERA FASE / THIRD PHASE

### NIVEL 1

UNIDAD / UNIT	TIPOLOGÍA / TYPOLOGY	ÁREA (m <sup>2</sup> )	AREA (ft <sup>2</sup> )	PRECIO / PRICE (\$M.N.)	30% - 40% - 30% (DTO. 4.20%)	30% - 60% - 10% (DTO. 6.30%)	80% - 0% - 20% (DTO. 9.98%)
D-101	Estudio	36.30	390.73	\$2,073,100.00	\$1,986,029.80	\$1,942,494.70	\$1,866,204.62
D-102	1R	39.10	419.90	\$2,180,500.00	\$2,088,919.00	\$2,043,128.50	\$1,962,886.10
D-103	1R	39.10	419.90	\$2,180,500.00	\$2,088,919.00	\$2,043,128.50	\$1,962,886.10
D-104	2Ra (Lock Off)	54.44	585.99	\$3,023,400.00	\$2,896,417.20	\$2,832,925.80	\$2,721,664.68
D-105	2Rb	62.70	674.90	\$3,465,400.00	\$3,319,853.20	\$3,247,079.80	\$3,119,553.08
D-106	1R	39.10	419.90	\$2,180,500.00	\$2,088,919.00	\$2,043,128.50	\$1,962,886.10
D-107	1R	39.10	419.90	\$2,180,500.00	\$2,088,919.00	\$2,043,128.50	\$1,962,886.10
D-108	1R	39.10	419.90	\$2,180,500.00	\$2,088,919.00	\$2,043,128.50	\$1,962,886.10
D-109	2Rb	62.70	674.90	\$3,465,400.00	\$3,319,853.20	\$3,247,079.80	\$3,119,553.08
D-110	2Ra (Lock Off)	54.44	585.99	\$3,023,400.00	\$2,896,417.20	\$2,832,925.80	\$2,721,664.68
D-111	1R	39.10	419.90	\$2,180,500.00	\$2,088,919.00	\$2,043,128.50	\$1,962,886.10
D-112	1R	39.10	419.90	\$2,180,500.00	\$2,088,919.00	\$2,043,128.50	\$1,962,886.10
D-113	Estudio	36.30	390.73	\$2,073,100.00	\$1,986,029.80	\$1,942,494.70	\$1,866,204.62
E-101	Estudio	36.30	390.73	\$2,073,100.00	\$1,986,029.80	\$1,942,494.70	\$1,866,204.62
E-102	1R	39.10	419.90	\$2,180,500.00	\$2,088,919.00	\$2,043,128.50	\$1,962,886.10
E-103	1R	39.10	419.90	\$2,180,500.00	\$2,088,919.00	\$2,043,128.50	\$1,962,886.10
E-104	2Ra (Lock Off)	54.44	585.99	\$3,023,400.00	\$2,896,417.20	\$2,832,925.80	\$2,721,664.68
E-105	2Rb	62.70	674.90	\$3,465,400.00	\$3,319,853.20	\$3,247,079.80	\$3,119,553.08
E-106	1R	39.10	419.90	\$2,180,500.00	\$2,088,919.00	\$2,043,128.50	\$1,962,886.10
E-107	1R	39.10	419.90	\$2,180,500.00	\$2,088,919.00	\$2,043,128.50	\$1,962,886.10
E-108	1R	39.10	419.90	\$2,180,500.00	\$2,088,919.00	\$2,043,128.50	\$1,962,886.10
E-109	2Rb	62.70	674.90	\$3,465,400.00	\$3,319,853.20	\$3,247,079.80	\$3,119,553.08
E-110	2Ra (Lock Off)	54.44	585.99	\$3,023,400.00	\$2,896,417.20	\$2,832,925.80	\$2,721,664.68
E-111	1R	39.10	419.90	\$2,180,500.00	\$2,088,919.00	\$2,043,128.50	\$1,962,886.10
E-112	1R	39.10	419.90	\$2,180,500.00	\$2,088,919.00	\$2,043,128.50	\$1,962,886.10
E-113	Estudio	36.30	390.73	\$2,073,100.00	\$1,986,029.80	\$1,942,494.70	\$1,866,204.62

 Disponible

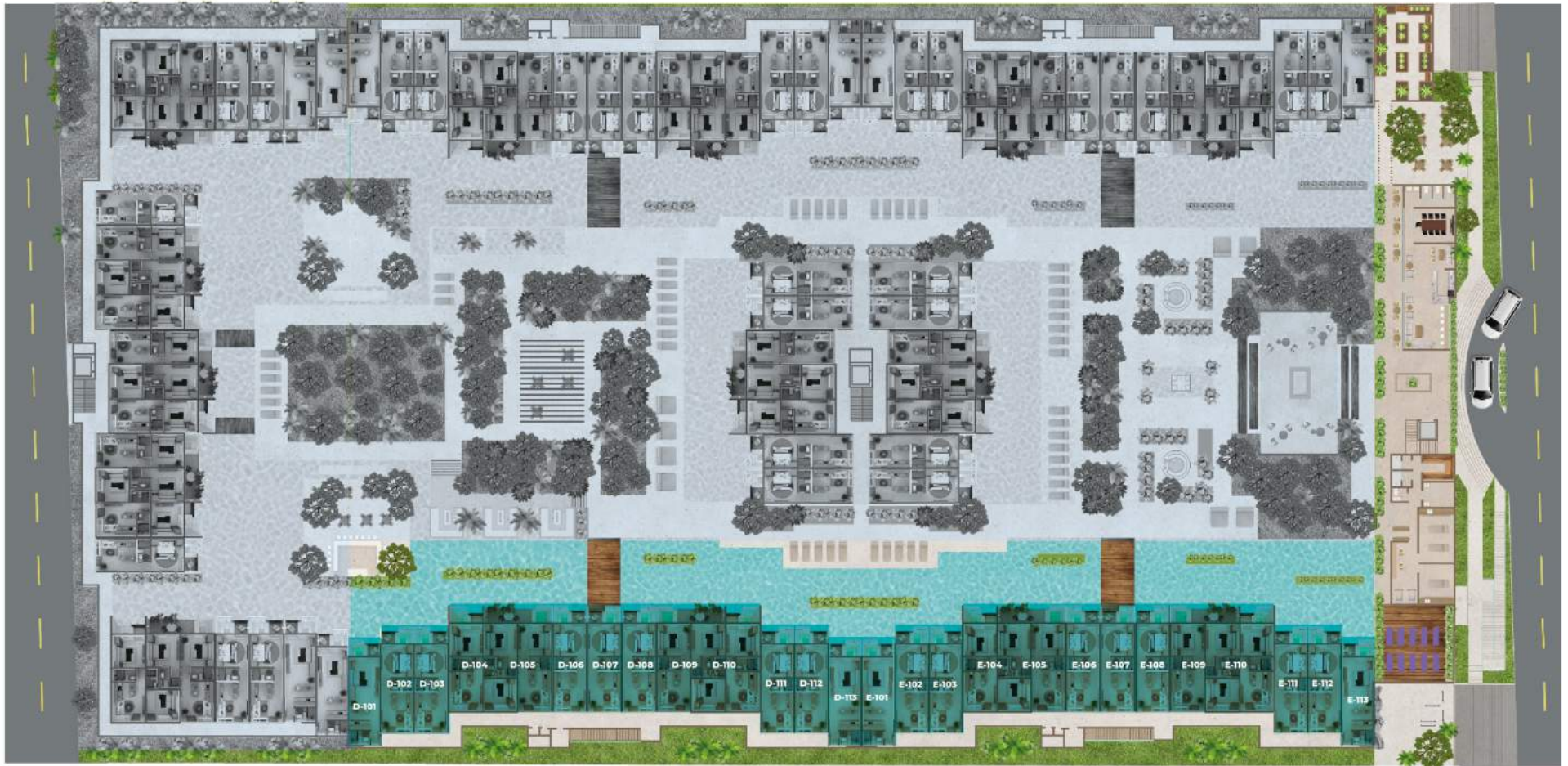
 Reservado

 Vendido

 No disponible

# EQUIPAMIENTO BÁSICO / BASIC EQUIPMENT TERCERA FASE / THIRD PHASE

NIVEL 1



 Disponible

 Reservado

 Vendido

 No disponible

# EQUIPAMIENTO BÁSICO / BASIC EQUIPMENT

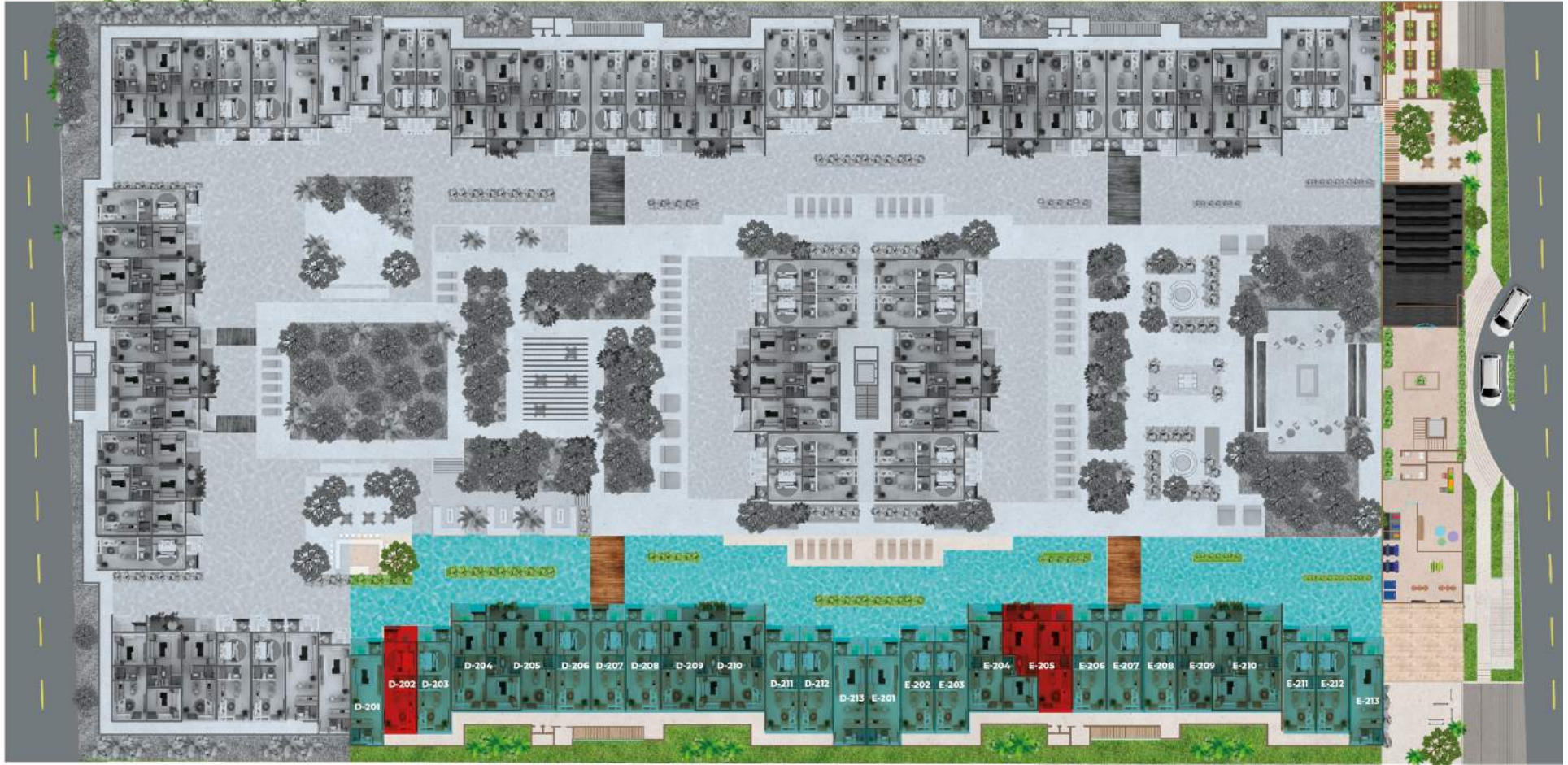
## TERCERA FASE / THIRD PHASE

### NIVEL 2

UNIDAD / UNIT	TIPOLOGÍA / TYPOLOGY	ÁREA (m <sup>2</sup> )	AREA (ft <sup>2</sup> )	PRECIO / PRICE (\$M.N.)	30% - 40% - 30% (DTO. 4.20%)	30% - 60% - 10% (DTO. 6.30%)	80% - 0% - 20% (DTO. 9.98%)
D-201	Estudio	36.30	390.73	\$2,073,100.00	\$1,986,029.80	\$1,942,494.70	\$1,866,204.62
<b>D-202</b>	<b>1R</b>	<b>39.10</b>	<b>419.90</b>				
D-203	1R	39.10	419.90	\$2,180,500.00	\$2,088,919.00	\$2,043,128.50	\$1,962,886.10
D-204	2Ra (Lock Off)	54.44	585.99	\$3,023,400.00	\$2,896,417.20	\$2,832,925.80	\$2,721,664.68
D-205	2Rb	62.70	674.90	\$3,465,400.00	\$3,319,853.20	\$3,247,079.80	\$3,119,553.08
D-206	1R	39.10	419.90	\$2,180,500.00	\$2,088,919.00	\$2,043,128.50	\$1,962,886.10
D-207	1R	39.10	419.90	\$2,180,500.00	\$2,088,919.00	\$2,043,128.50	\$1,962,886.10
D-208	1R	39.10	419.90	\$2,180,500.00	\$2,088,919.00	\$2,043,128.50	\$1,962,886.10
D-209	2Rb	62.70	674.90	\$3,465,400.00	\$3,319,853.20	\$3,247,079.80	\$3,119,553.08
D-210	2Ra (Lock Off)	54.44	585.99	\$3,023,400.00	\$2,896,417.20	\$2,832,925.80	\$2,721,664.68
D-211	1R	39.10	419.90	\$2,180,500.00	\$2,088,919.00	\$2,043,128.50	\$1,962,886.10
D-212	1R	39.10	419.90	\$2,180,500.00	\$2,088,919.00	\$2,043,128.50	\$1,962,886.10
D-213	Estudio	36.30	390.73	\$2,073,100.00	\$1,986,029.80	\$1,942,494.70	\$1,866,204.62
E-201	Estudio	36.30	390.73	\$2,073,100.00	\$1,986,029.80	\$1,942,494.70	\$1,866,204.62
E-202	1R	39.10	419.90	\$2,180,500.00	\$2,088,919.00	\$2,043,128.50	\$1,962,886.10
E-203	1R	39.10	419.90	\$2,180,500.00	\$2,088,919.00	\$2,043,128.50	\$1,962,886.10
E-204	2Ra (Lock Off)	54.44	585.99	\$3,023,400.00	\$2,896,417.20	\$2,832,925.80	\$2,721,664.68
<b>E-205</b>	<b>2Rb</b>	<b>62.70</b>	<b>674.90</b>				
E-206	1R	39.10	419.90	\$2,180,500.00	\$2,088,919.00	\$2,043,128.50	\$1,962,886.10
E-207	1R	39.10	419.90	\$2,180,500.00	\$2,088,919.00	\$2,043,128.50	\$1,962,886.10
E-208	1R	39.10	419.90	\$2,180,500.00	\$2,088,919.00	\$2,043,128.50	\$1,962,886.10
E-209	2Rb	62.70	674.90	\$3,465,400.00	\$3,319,853.20	\$3,247,079.80	\$3,119,553.08
E-210	2Ra (Lock Off)	54.44	585.99	\$3,023,400.00	\$2,896,417.20	\$2,832,925.80	\$2,721,664.68
E-211	1R	39.10	419.90	\$2,180,500.00	\$2,088,919.00	\$2,043,128.50	\$1,962,886.10
E-212	1R	39.10	419.90	\$2,180,500.00	\$2,088,919.00	\$2,043,128.50	\$1,962,886.10
E-213	Estudio	36.30	390.73	\$2,073,100.00	\$1,986,029.80	\$1,942,494.70	\$1,866,204.62

# EQUIPAMIENTO BÁSICO / BASIC EQUIPMENT TERCERA FASE / THIRD PHASE

NIVEL 2



 Disponible

 Reservado

 Vendido

 No disponible

# EQUIPAMIENTO BÁSICO / BASIC EQUIPMENT

## TERCERA FASE / THIRD PHASE

### PENT HOUSE

UNIDAD / UNIT	TIPOLOGÍA / TYPOLOGY	ÁREA (m <sup>2</sup> )	AREA (ft <sup>2</sup> )	PRECIO / PRICE (\$M.N.)	30% - 40% - 30% (DTO. 4.20%)	30% - 60% - 10% (DTO. 6.30%)	80% - 0% - 20% (DTO. 9.98%)
D-301	PH2 (Lock Off)	114.40	1231.39	\$6,843,400.00	\$6,555,977.20	\$6,412,265.80	\$6,160,428.68
D-302	PH1 (Lock Off)	117.15	1260.99				
D-303	PH1 (Lock Off)	117.15	1260.99	\$7,007,900.00	\$6,713,568.20	\$6,566,402.30	\$6,308,511.58
D-304	PH1 (Lock Off)	117.15	1260.99				
D-305	PH2 (Lock Off)	114.40	1231.39	\$6,843,400.00	\$6,555,977.20	\$6,412,265.80	\$6,160,428.68
E-301	PH2 (Lock Off)	114.40	1231.39	\$6,843,400.00	\$6,555,977.20	\$6,412,265.80	\$6,160,428.68
E-302	PH1 (Lock Off)	117.15	1260.99	\$7,007,900.00	\$6,713,568.20	\$6,566,402.30	\$6,308,511.58
E-303	PH1 (Lock Off)	117.15	1260.99	\$7,007,900.00	\$6,713,568.20	\$6,566,402.30	\$6,308,511.58
E-304	PH1 (Lock Off)	117.15	1260.99	\$7,007,900.00	\$6,713,568.20	\$6,566,402.30	\$6,308,511.58
E-305	PH2 (Lock Off)	114.40	1231.39	\$6,843,400.00	\$6,555,977.20	\$6,412,265.80	\$6,160,428.68

 Disponible

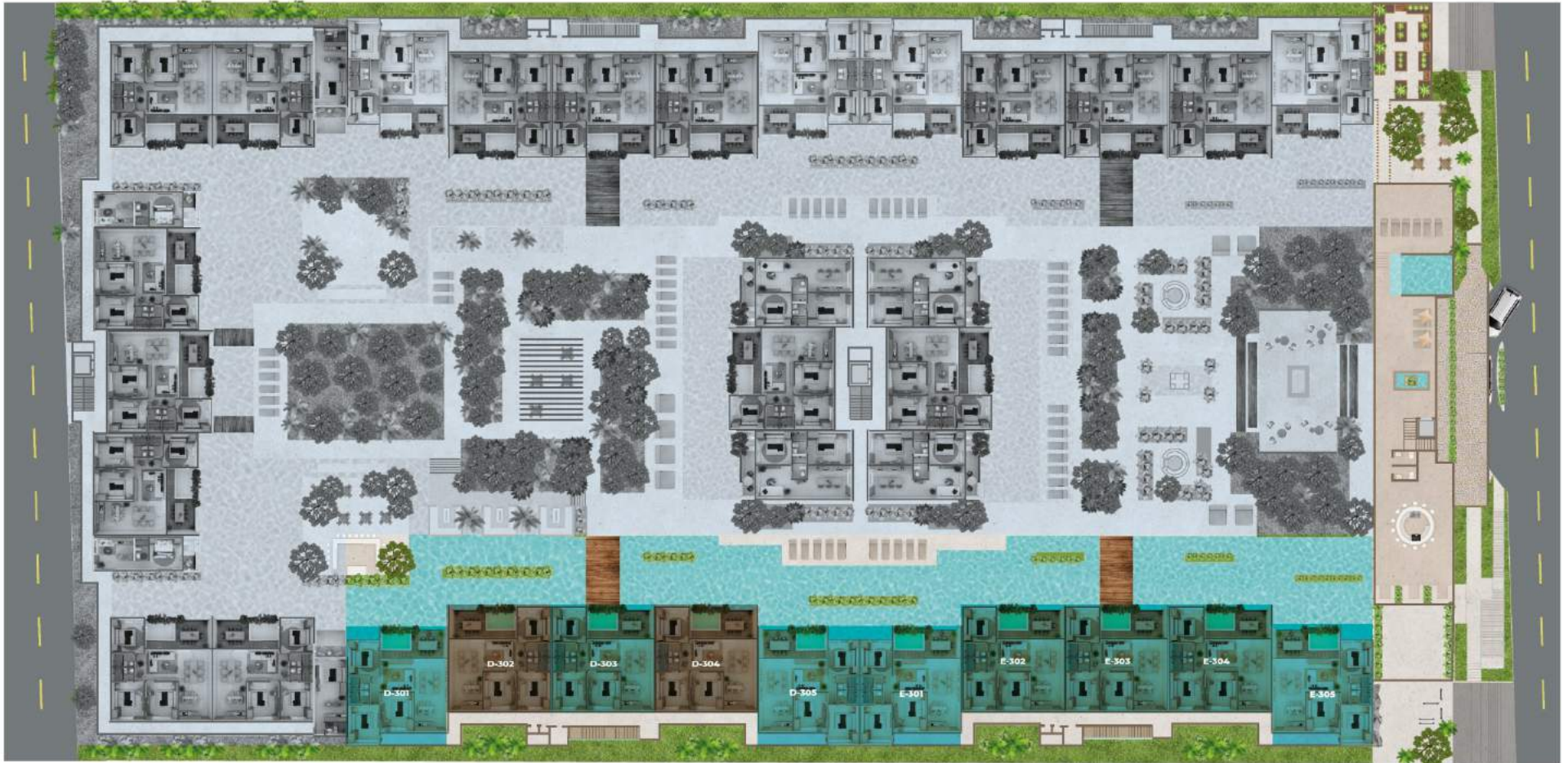
 Reservado

 Vendido

 No disponible

# EQUIPAMIENTO BÁSICO / BASIC EQUIPMENT TERCERA FASE / THIRD PHASE

## PENT HOUSE



 Disponible

 Reservado

 Vendido

 No disponible