



A
K SIGN
NAT
URE
UA



INDEX

03

AKUA SIGNATURE

06

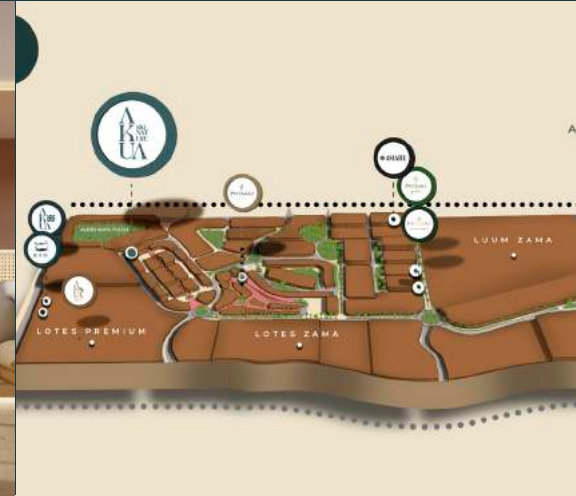
AMENITIES

09

FEATURES

11

LOCATION





Akua Signature stands out for its personal stamp that differentiates it within the market Tulum real estate, its architecture avant-garde represented through a facade completely made of mirrors, a reflection of the natural beauty that surrounds this incredible project; thus creating a projection of the vegetation that manages to merge the building with its environment, always highlighting the splendor of the natural.

AKUA SIGNATURE

AKUA SIGNATURE



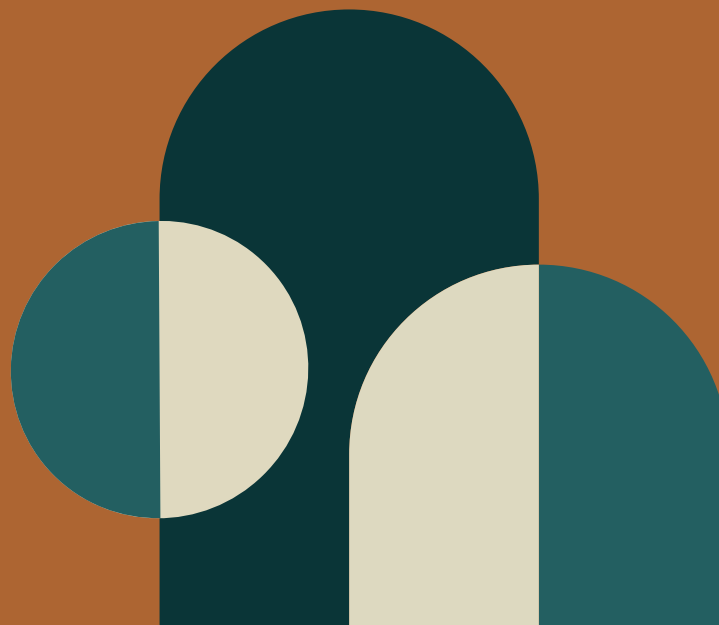


TRUTH





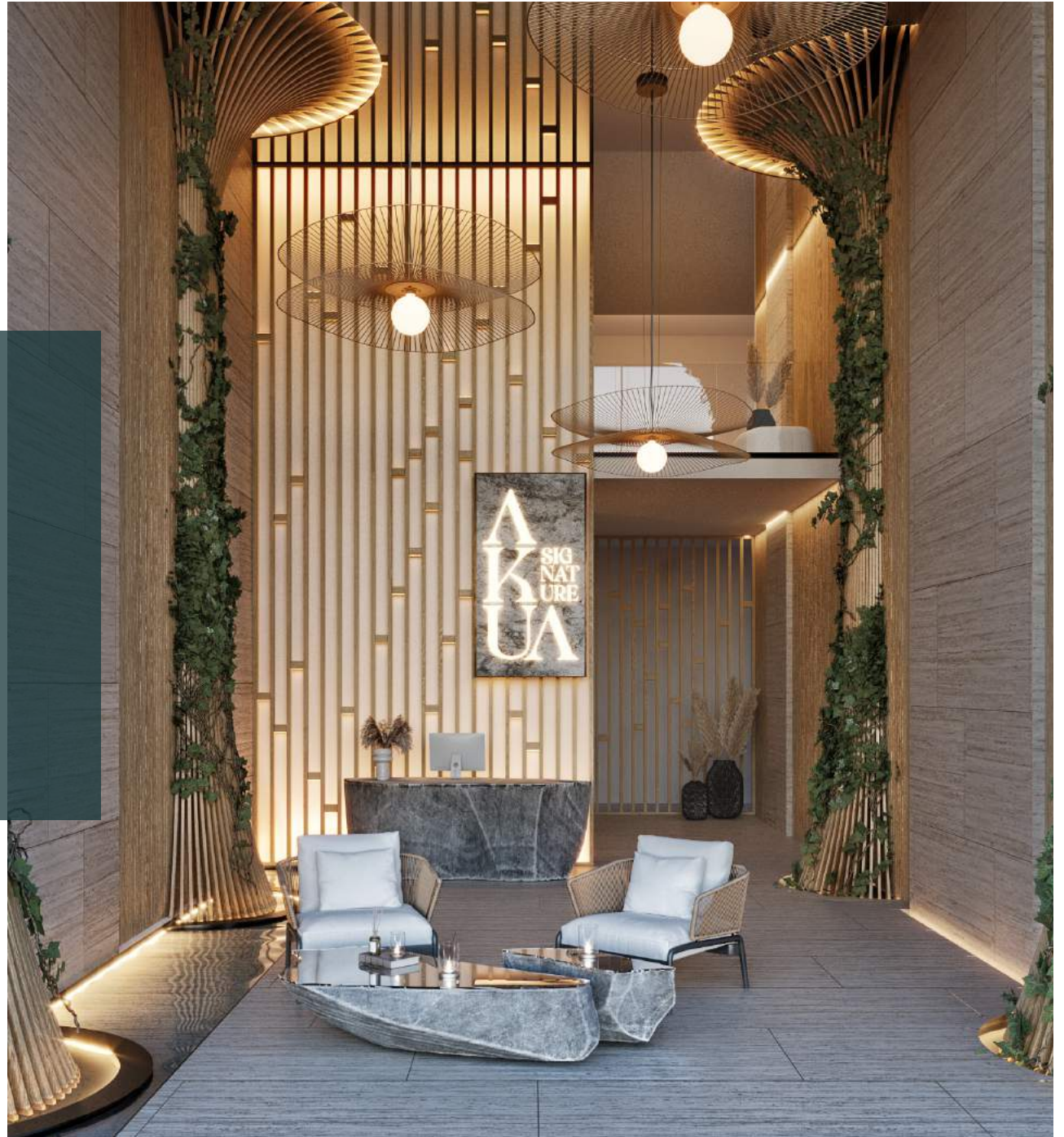
Located within the well-known area of Aldea Zamá, which stands out for its high added value and demand, with easy access to all services, as well as first-class shops and restaurants.



AKUA SIGNATURE

AKUA SIGNATURE

The 5-level building will have Luxury amenities, where most of these will be in their spectacular rooftop, with a jungle concept, surrounded by endemic vegetation.



SERVICE



Gym



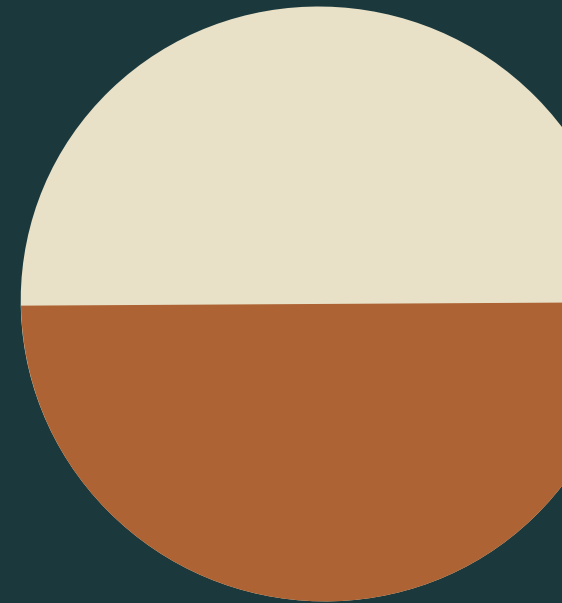
Restaurant



Rooftop con alberca



Whisky & cigar bar



AMENITIES



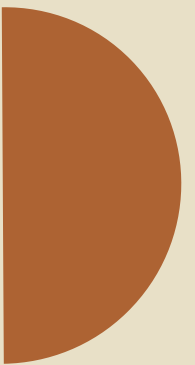
Elevator



Spa



Commercial area







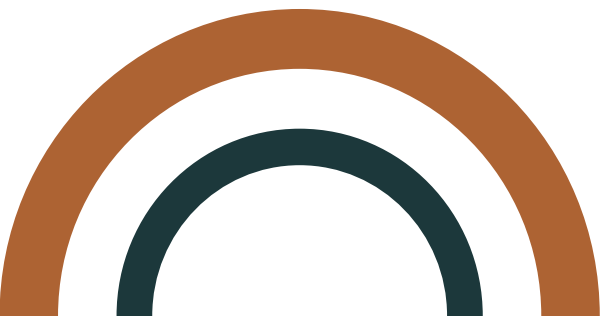




AKUA SIGNATURE

AKUA SIGNATURE

Its spaces and furniture in colors neutrals are complemented by its concept minimalist and the combination of textures, providing a balance and warmth to your residents.

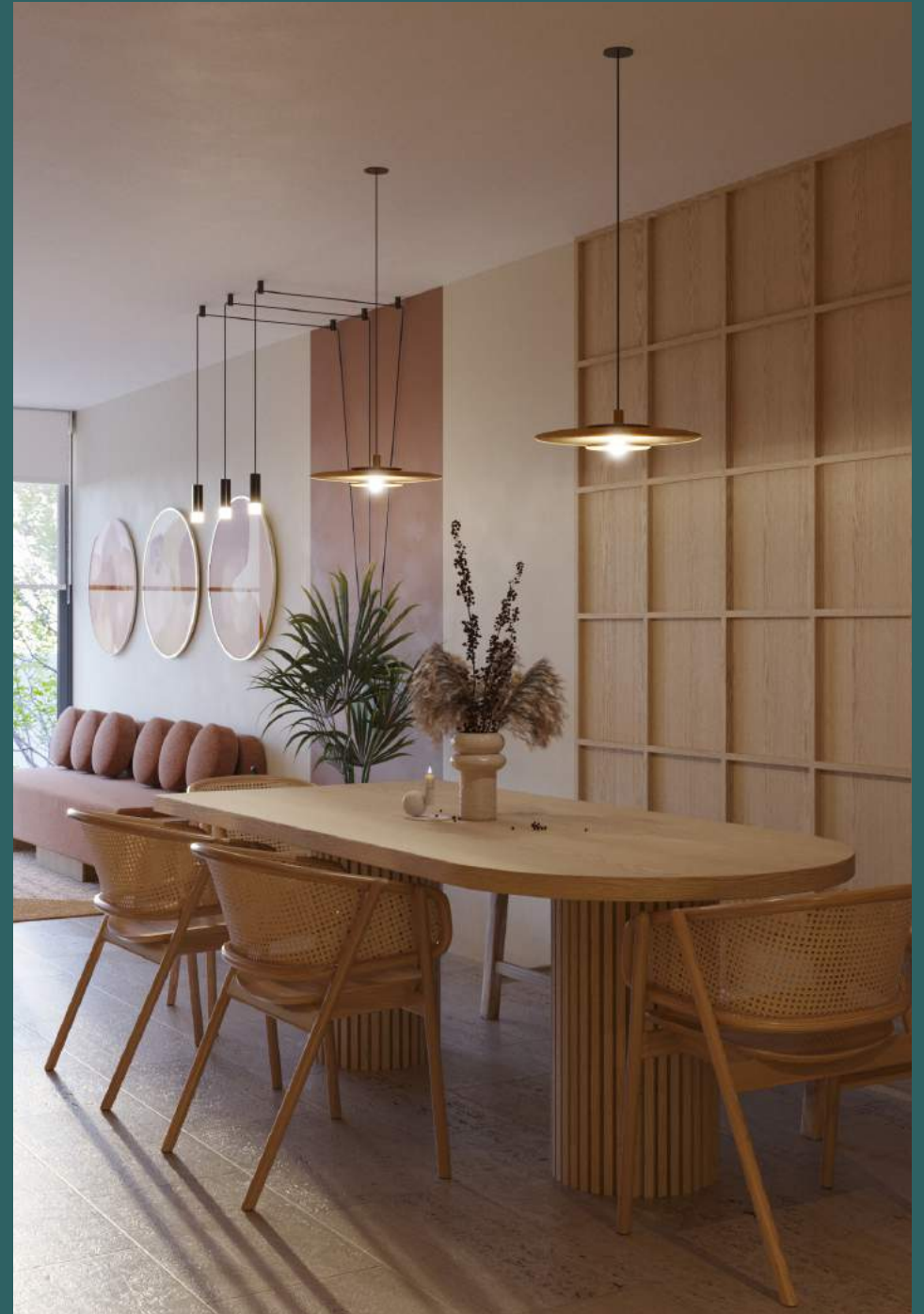


FEATURES

Natural material from the region, with finishes in marble, chukum and washed concrete, as well as various details in wood and stone.





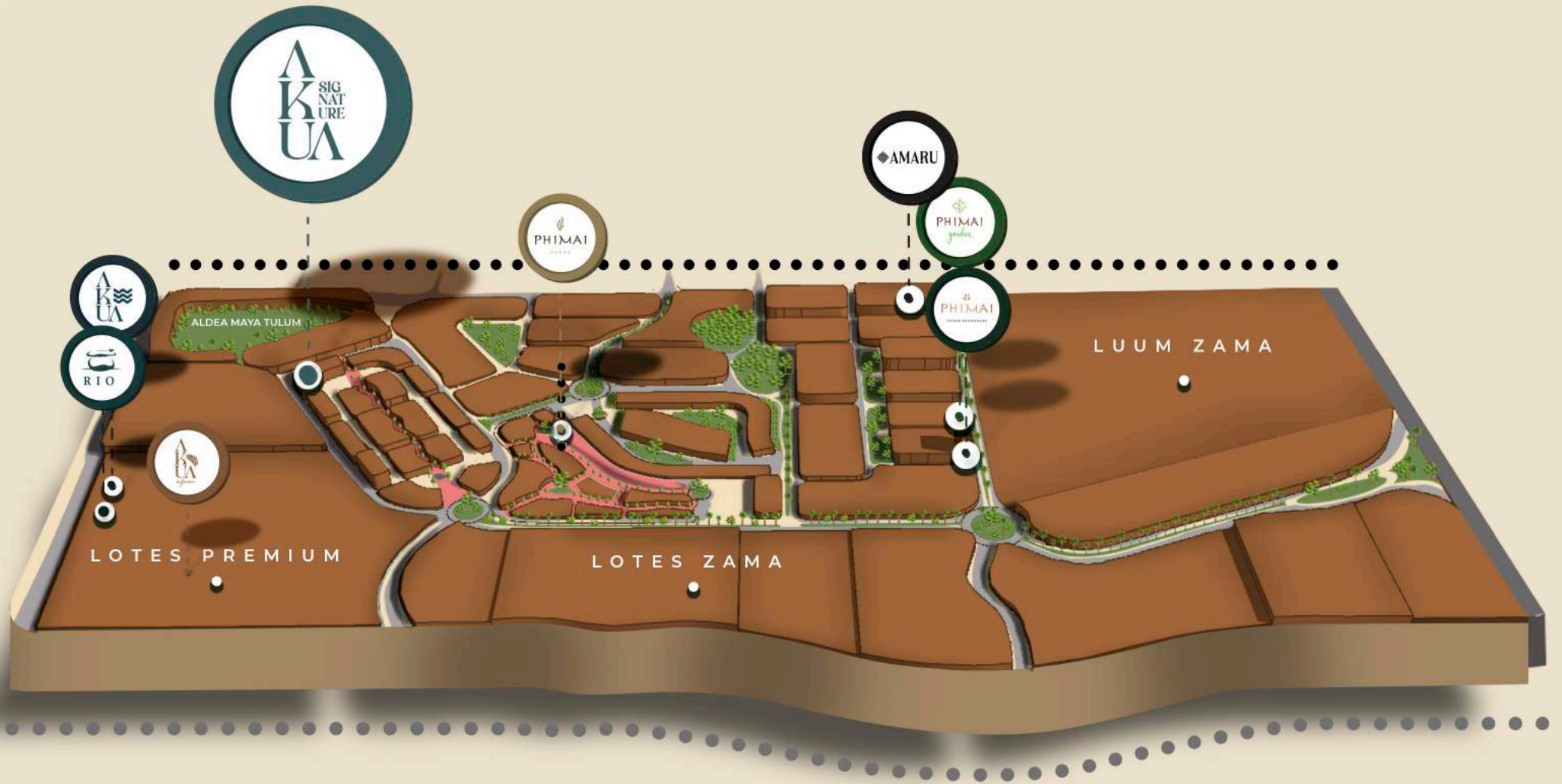






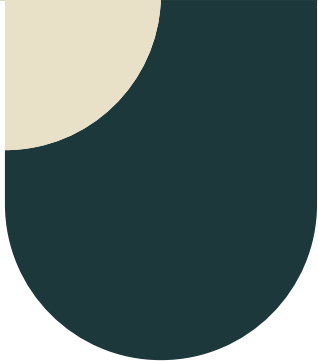
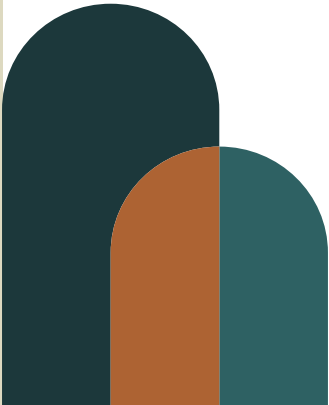
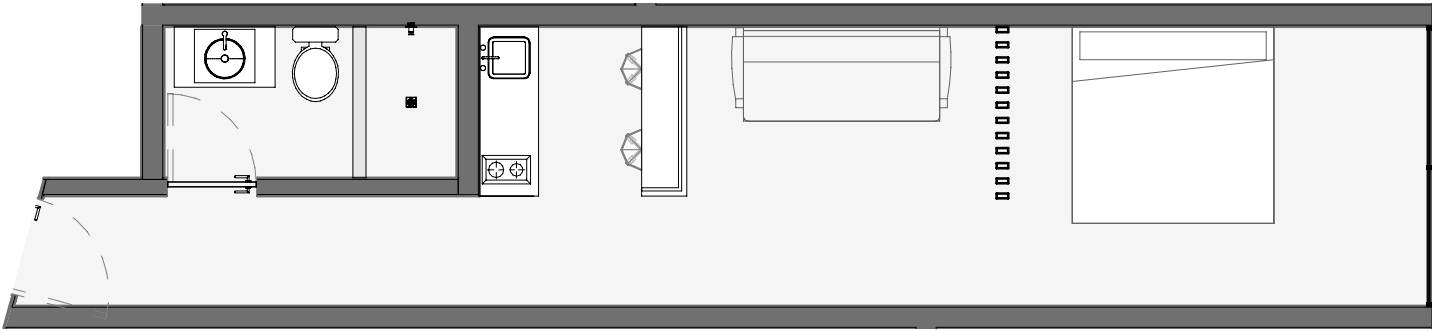


LOCATION

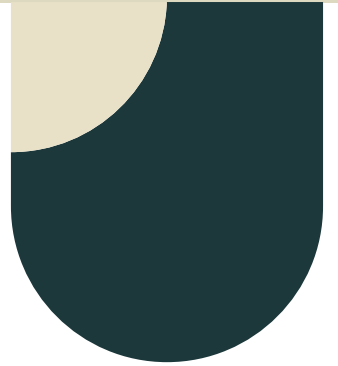
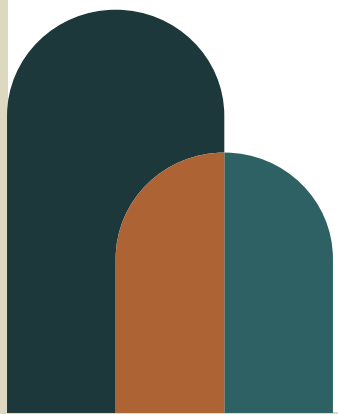
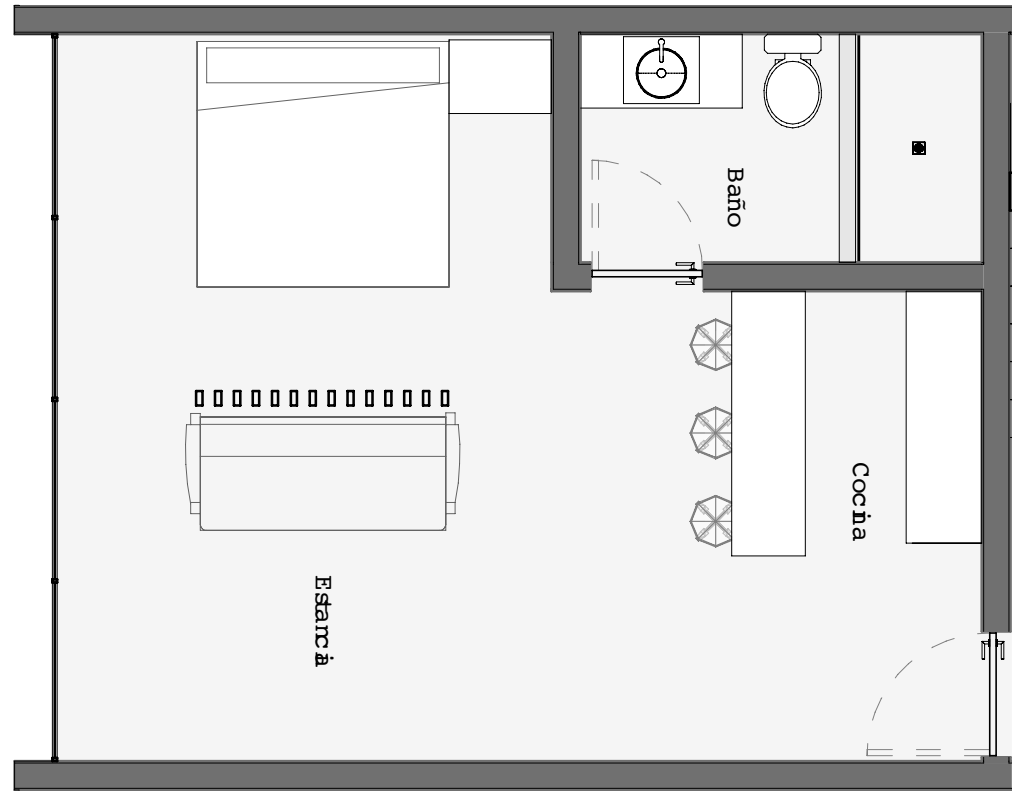


- COMMERCIAL AREA
- TULUM HIGHWAY
- HOTEL AREA

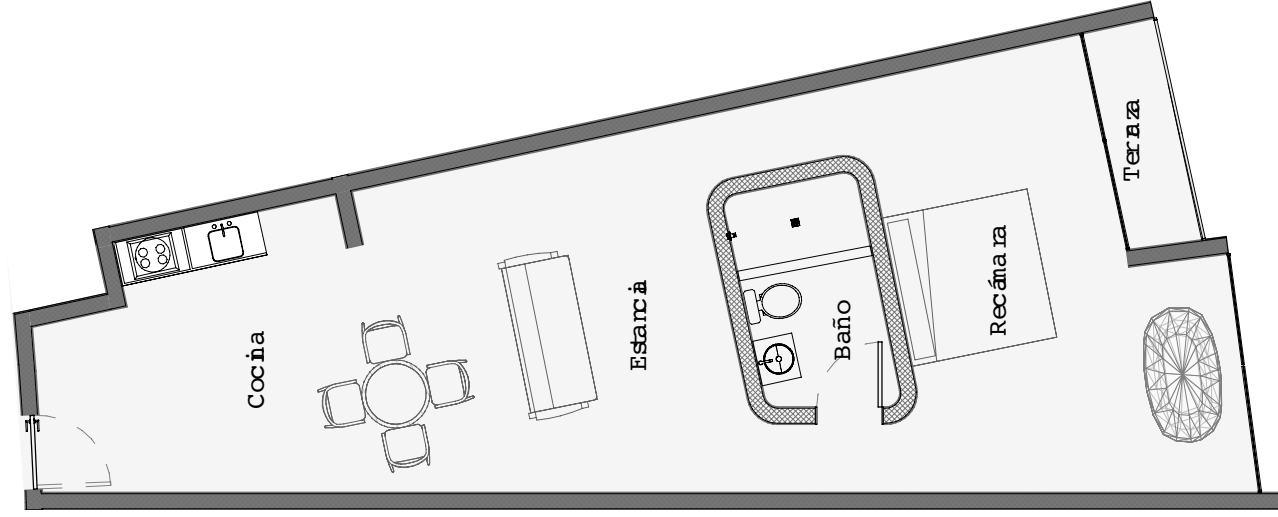
STUDIO



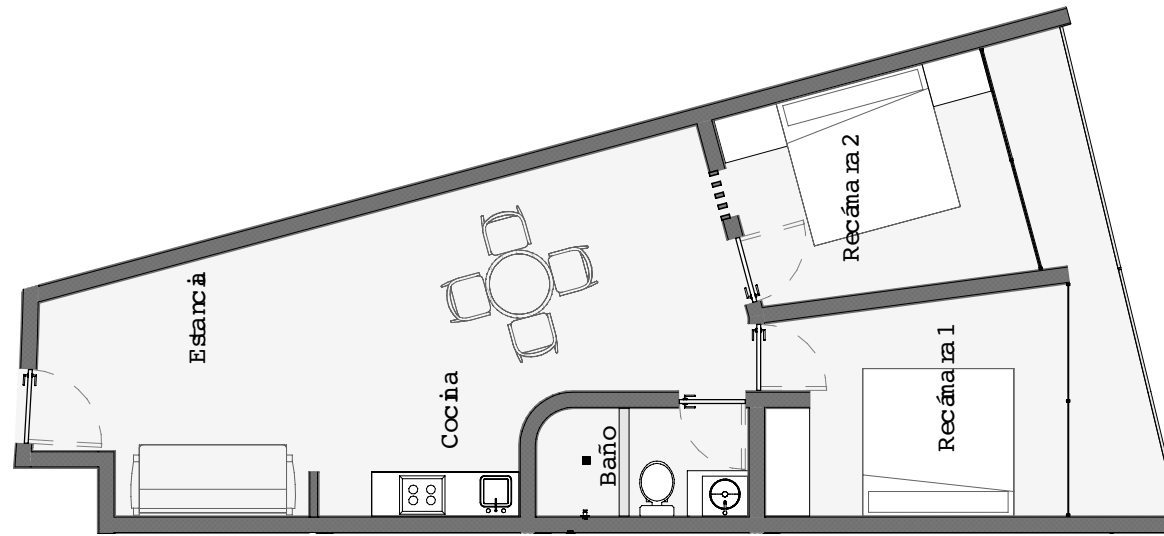
STUDIO



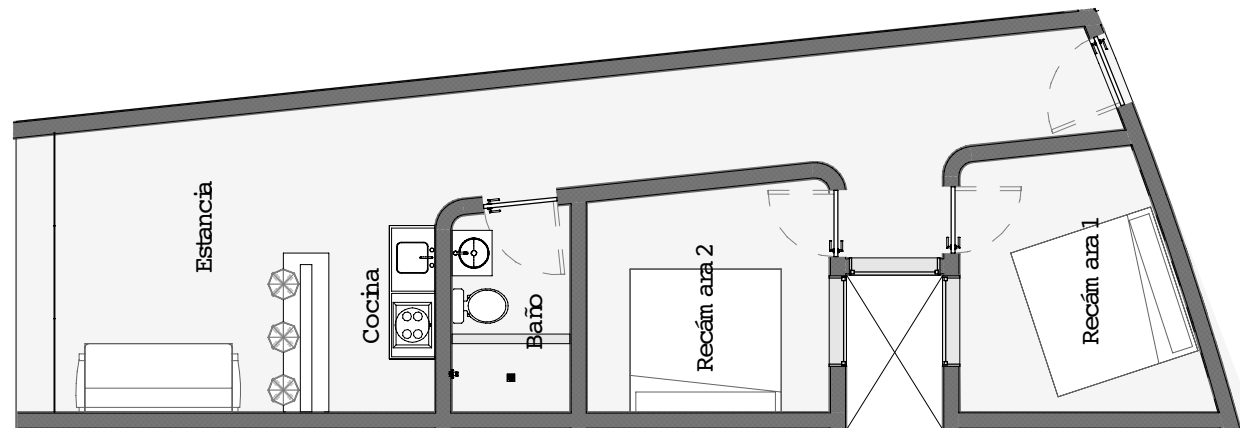
STUDIO



2 BEDROOMS



2 BEDROOMS



AKUA SIGNATURE



AKUA SIGNATURE

2 BEDROOMS LOCK OFF

