



ANEMONA

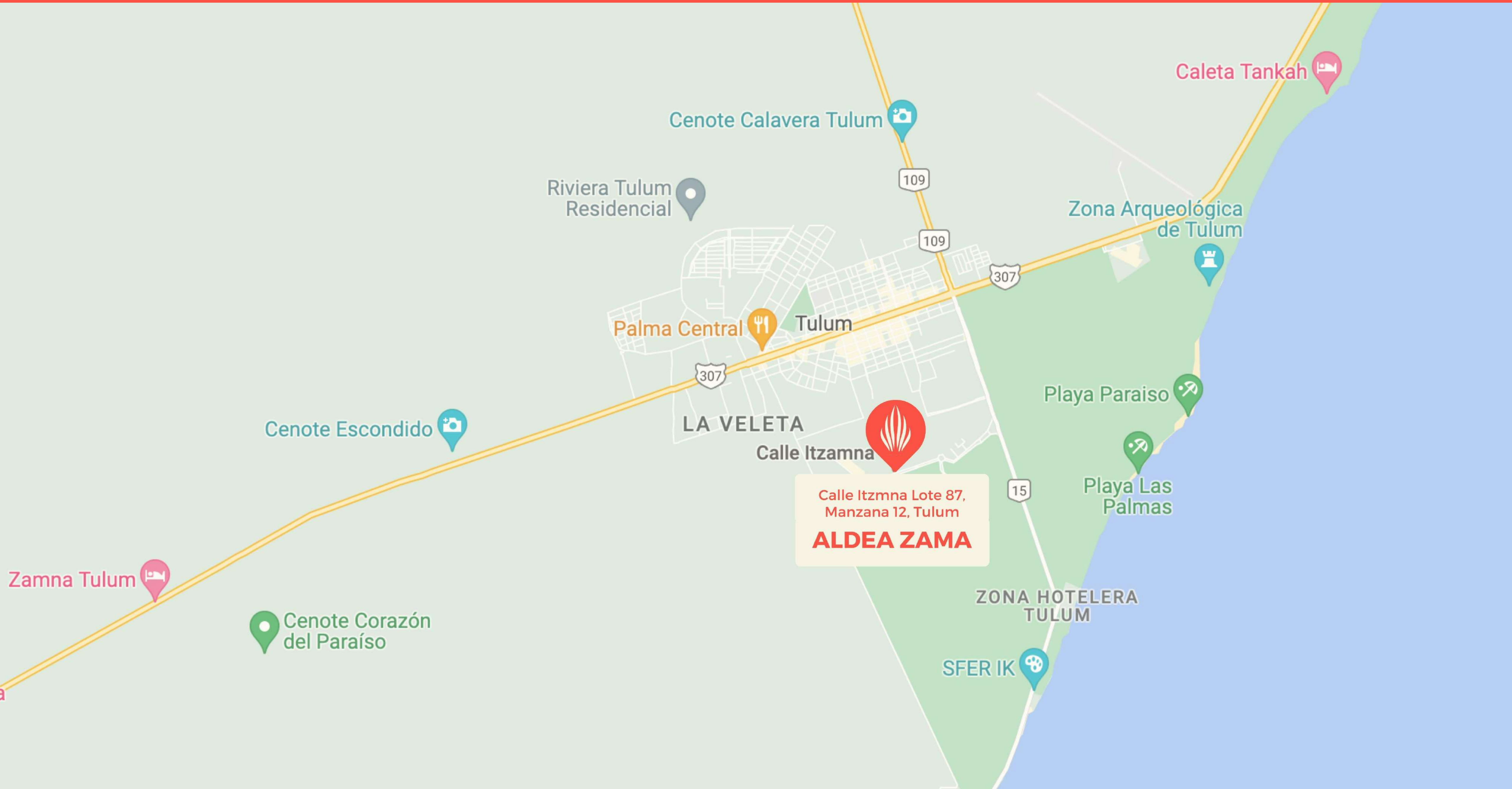
PROJECT

COMMERCIAL BUILDING 3 LEVELS + ROOF TOP

Aimed at small businesses and services in search of areas of high added value and growth within a welcoming and safe environment.

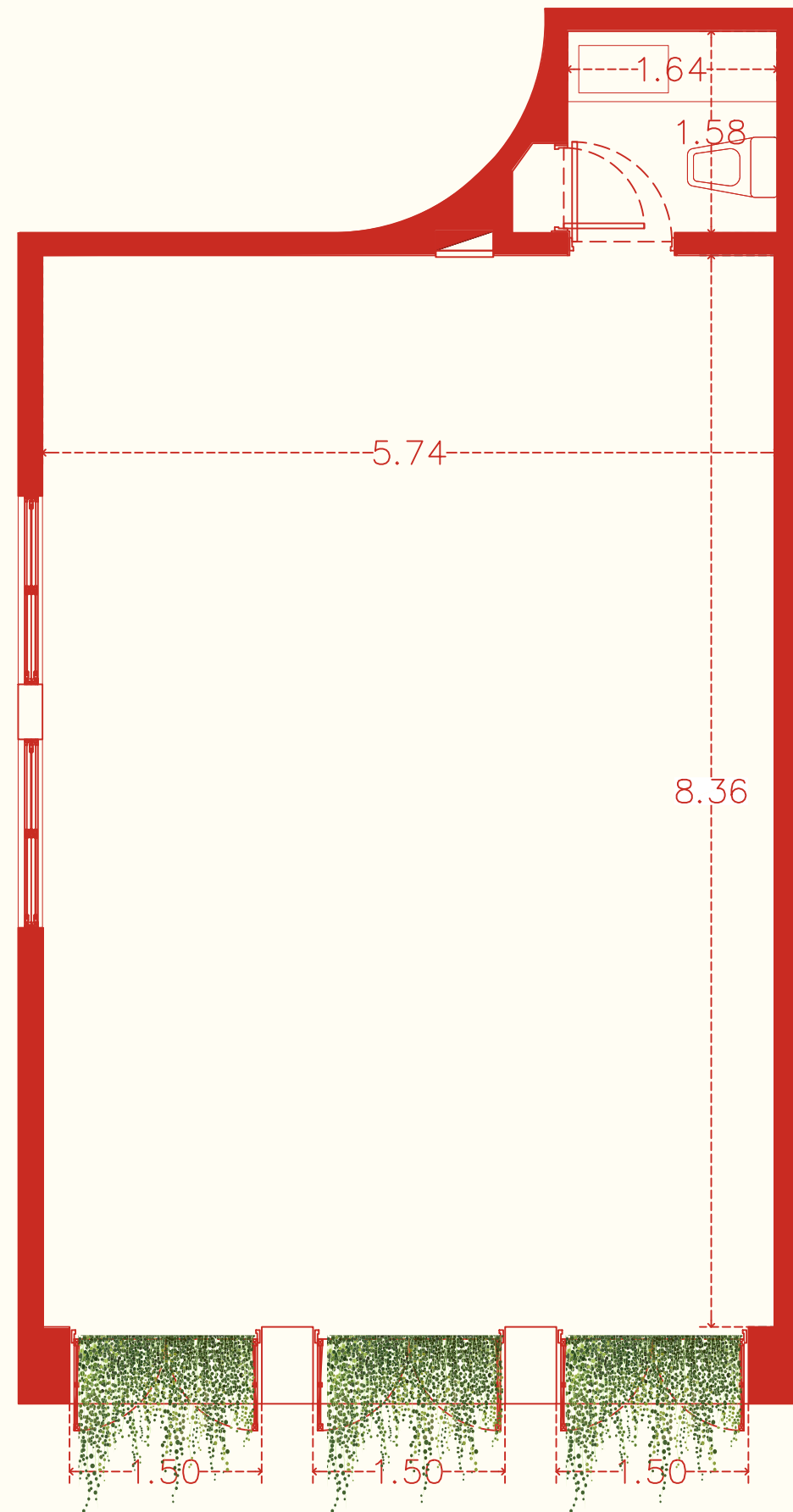


LOCATION

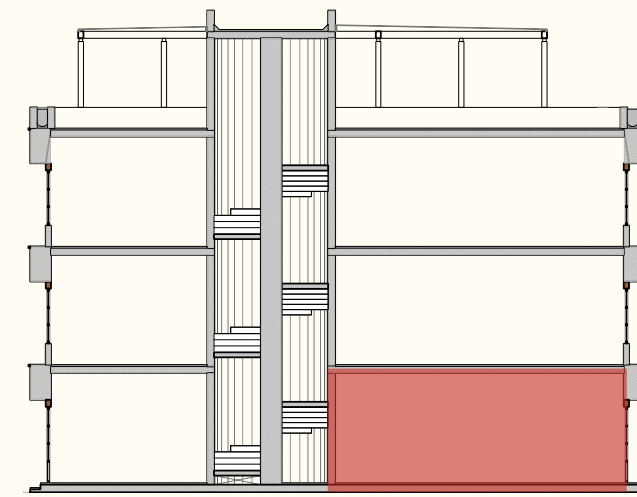


No.101

642 qsft²



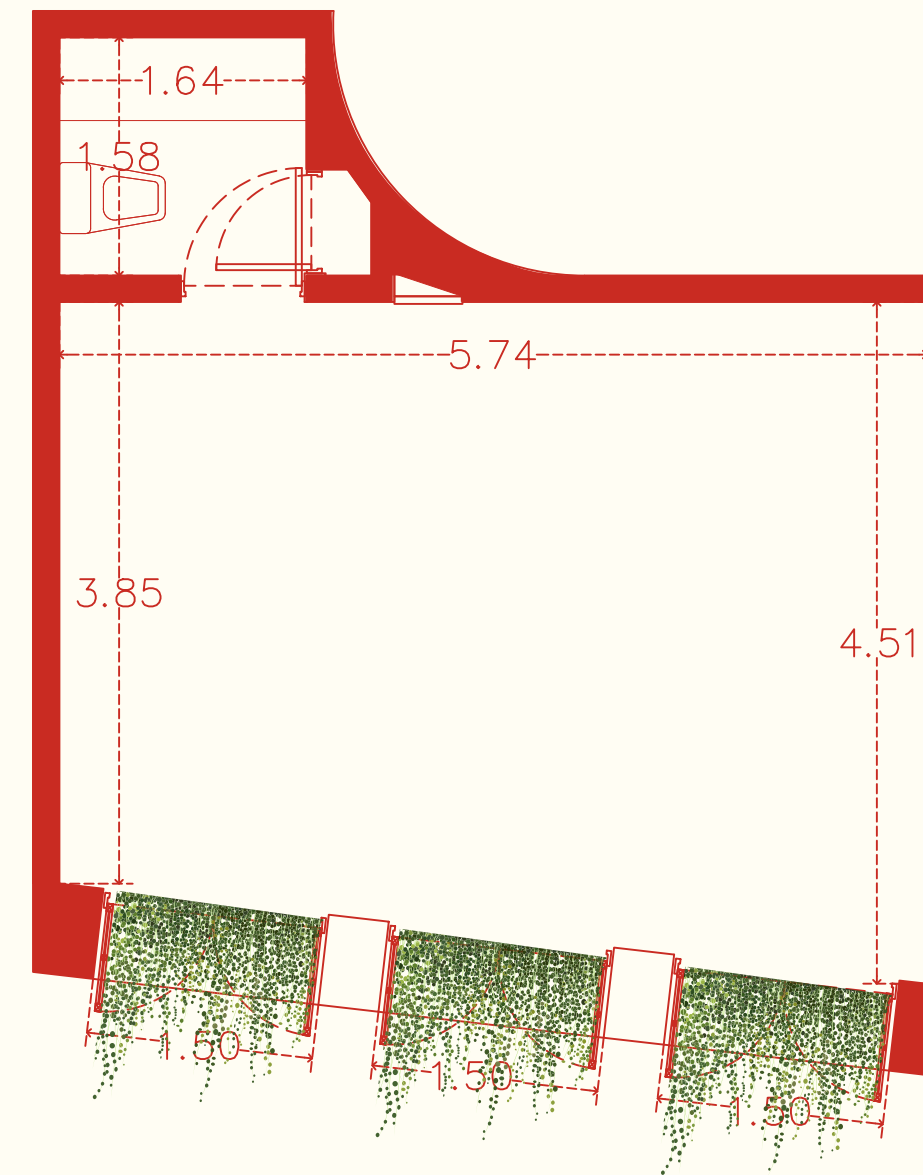
Main avenue front



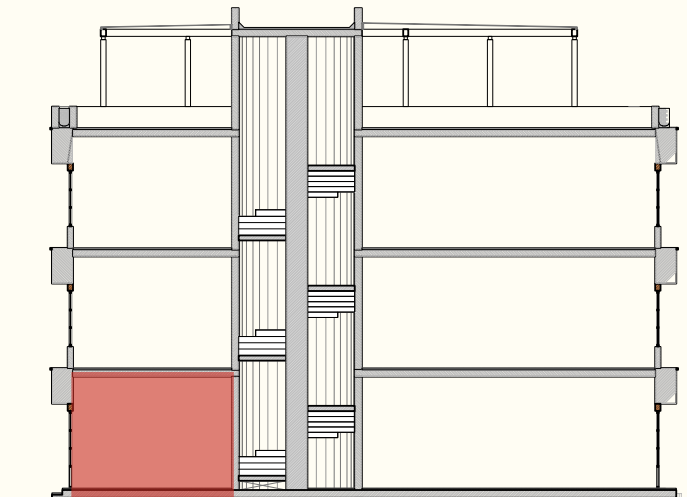
SCHEMATIC SECTION

No.102

368 qsft²



Front pedestrian Street



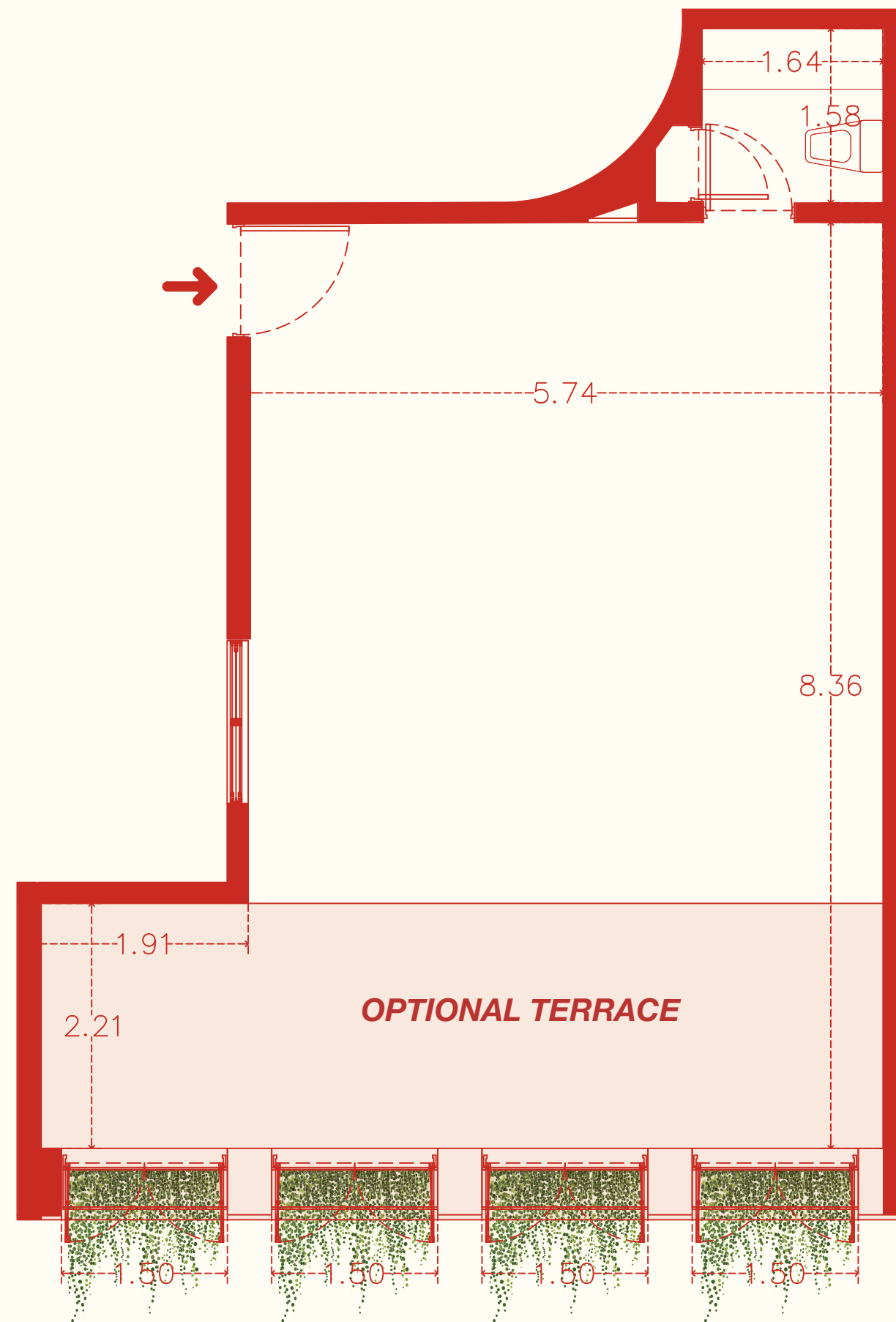
SCHEMATIC SECTION



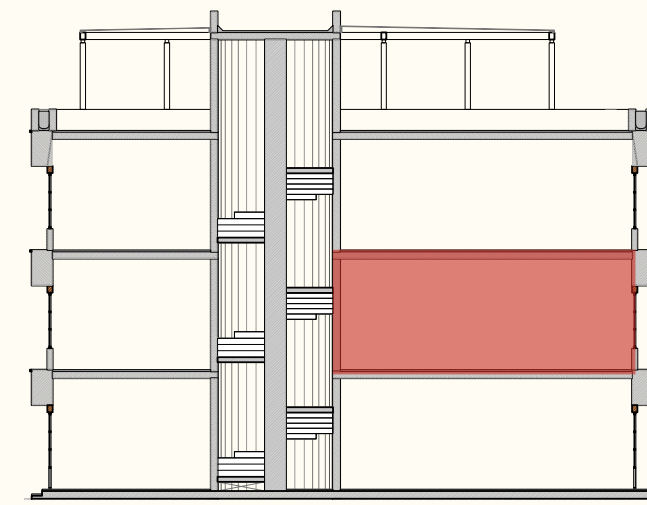
TYOLOGIES

No.201

703 qsft²



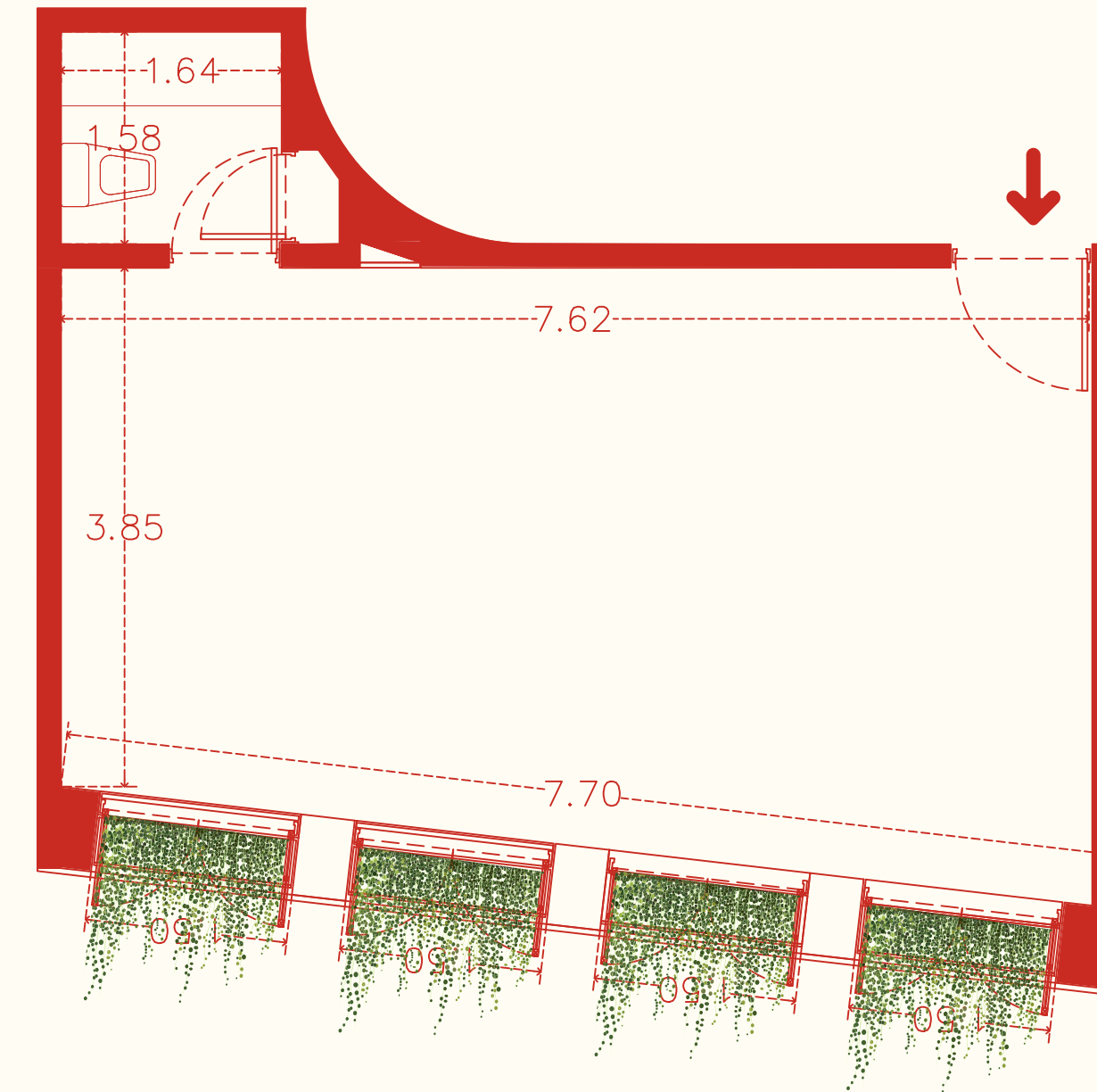
Main avenue front



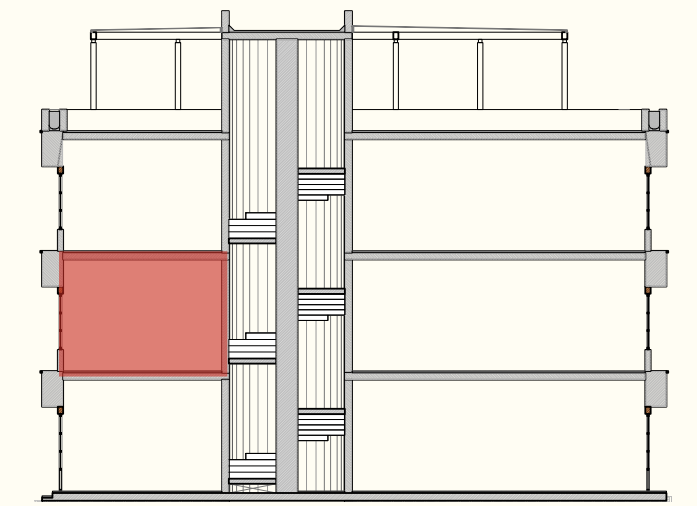
SCHEMATIC SECTION

No.202

478 qsft²



Front pedestrian Street



SCHEMATIC SECTION

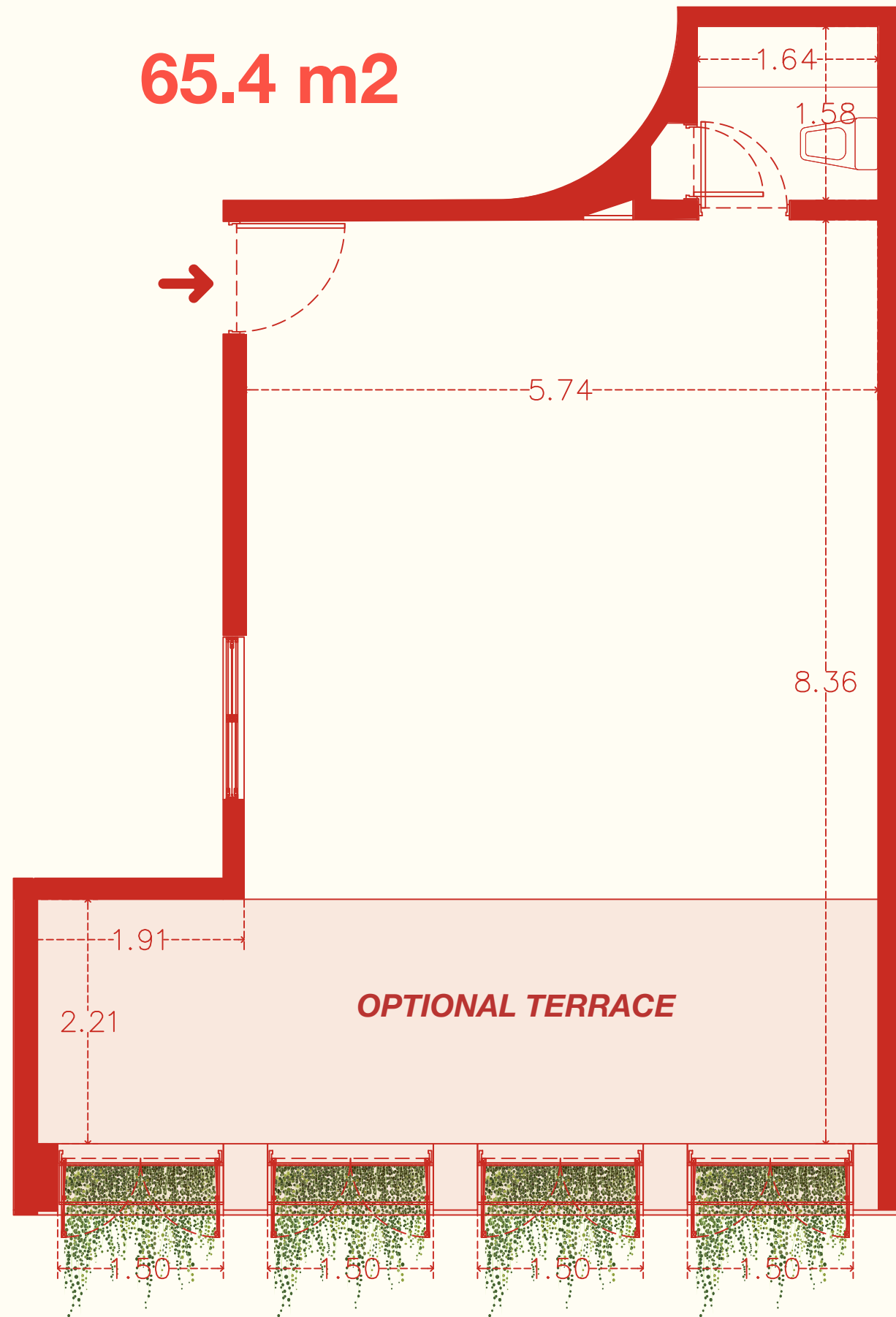


TYOLOGIES

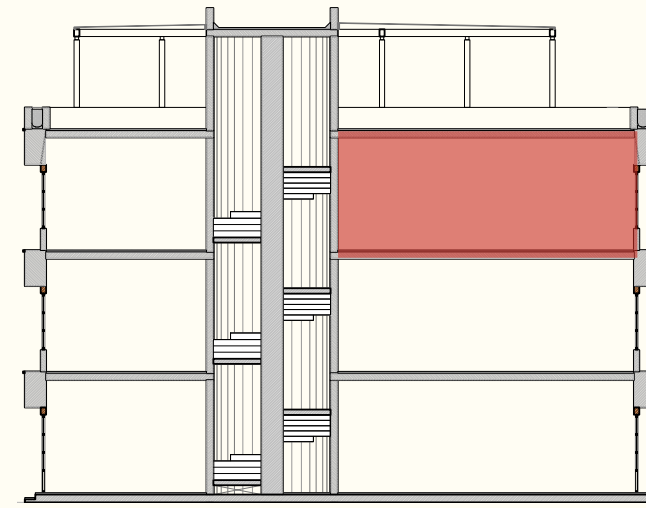
No.301

703 qsf²

65.4 m²

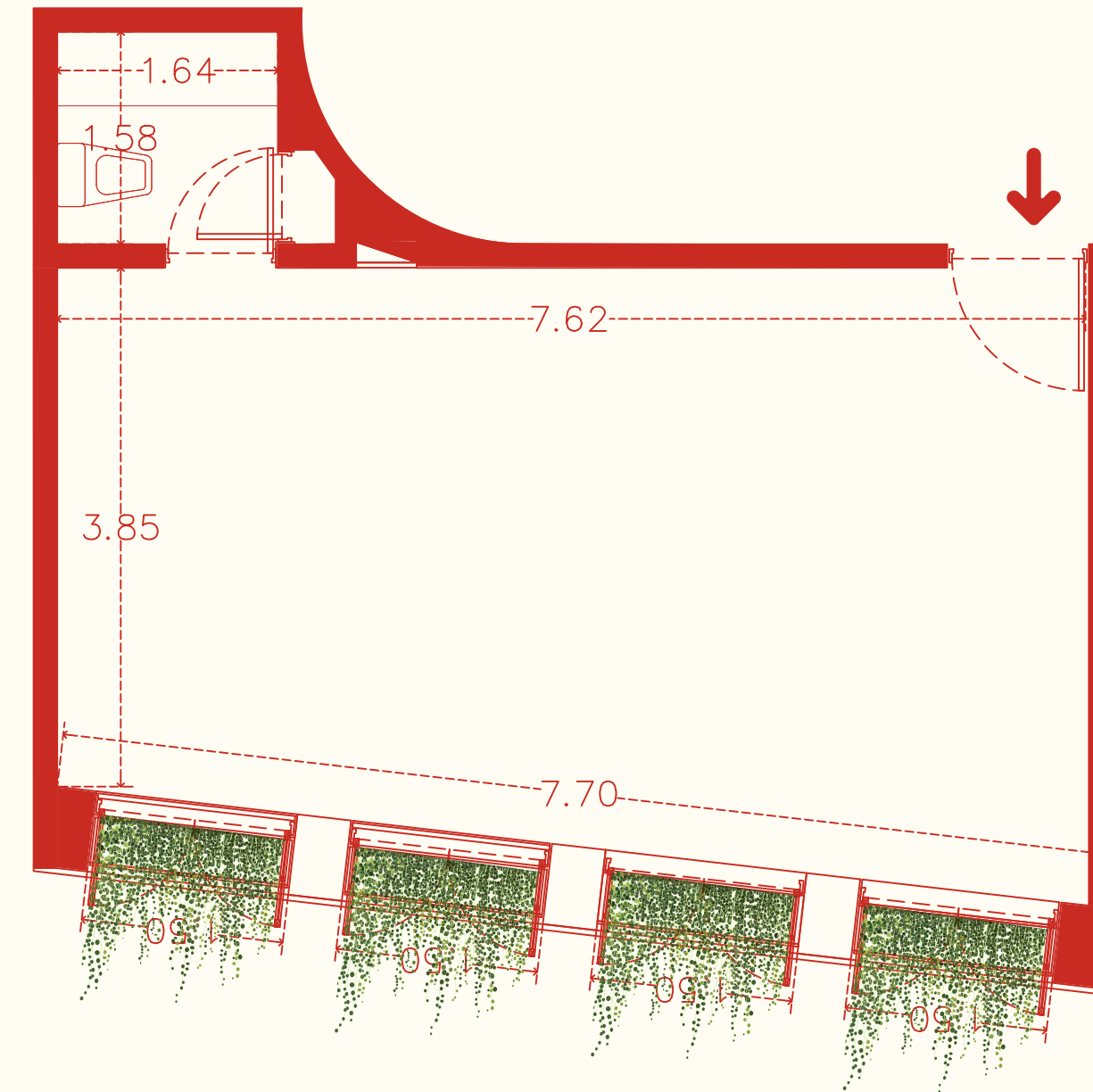


Main avenue front

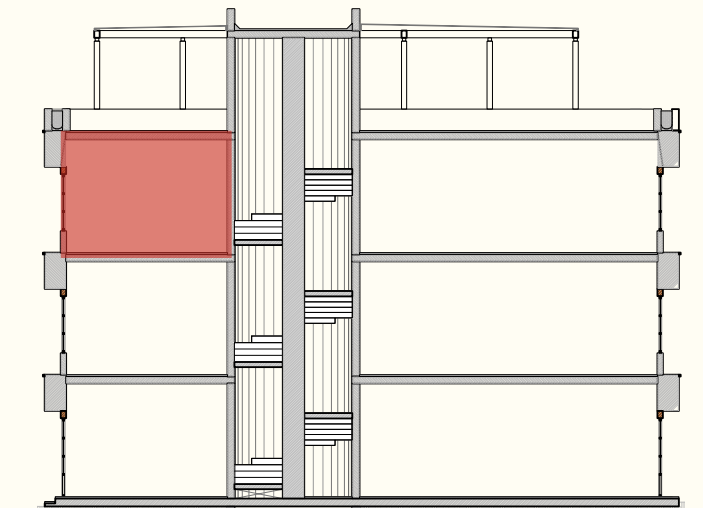


No.302

489 qsf²



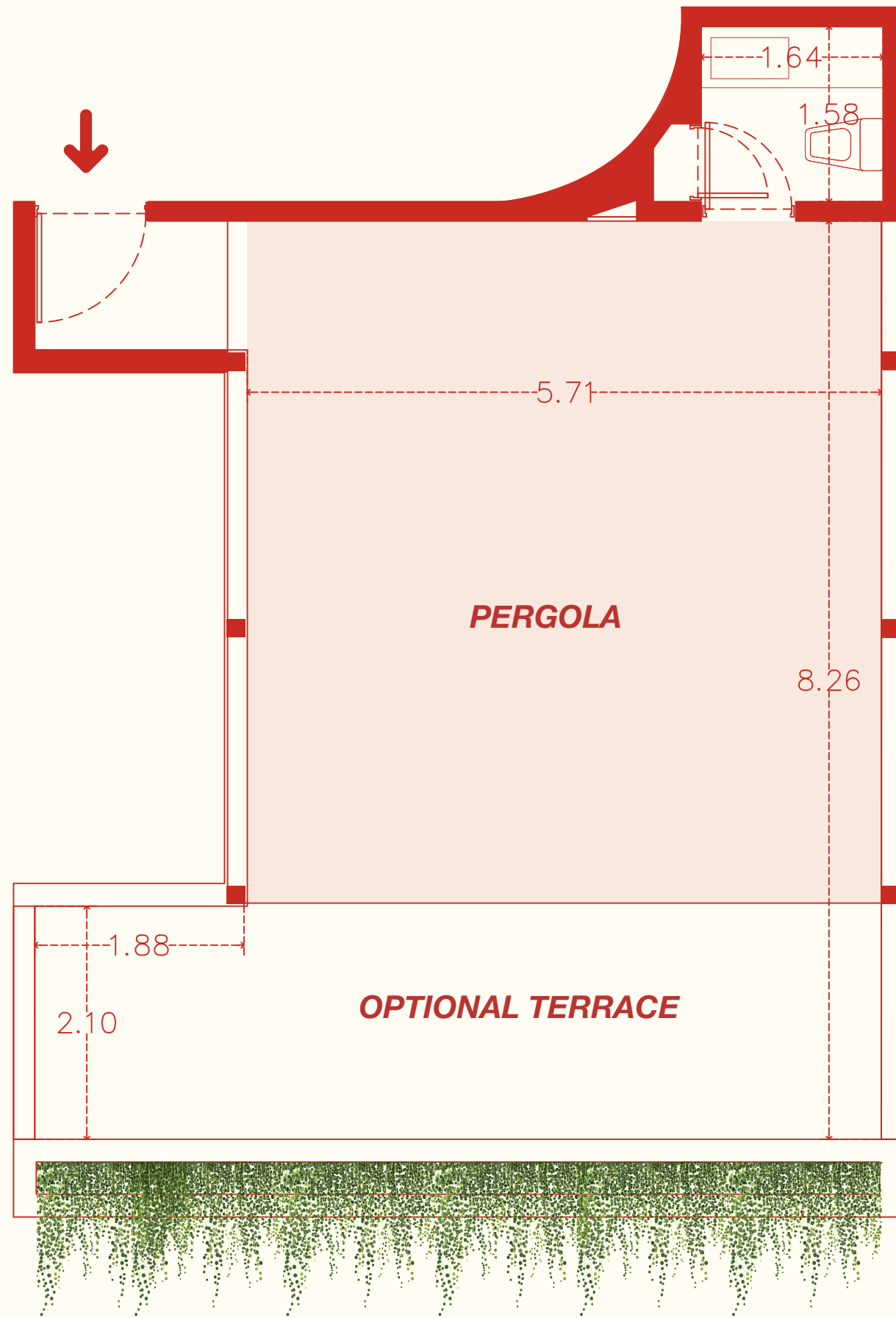
Front pedestrian Street



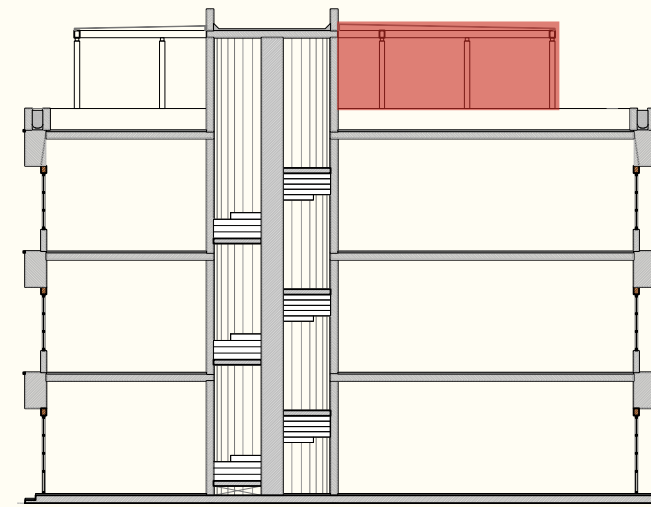
TYOLOGIES

No.401

736 qsft²



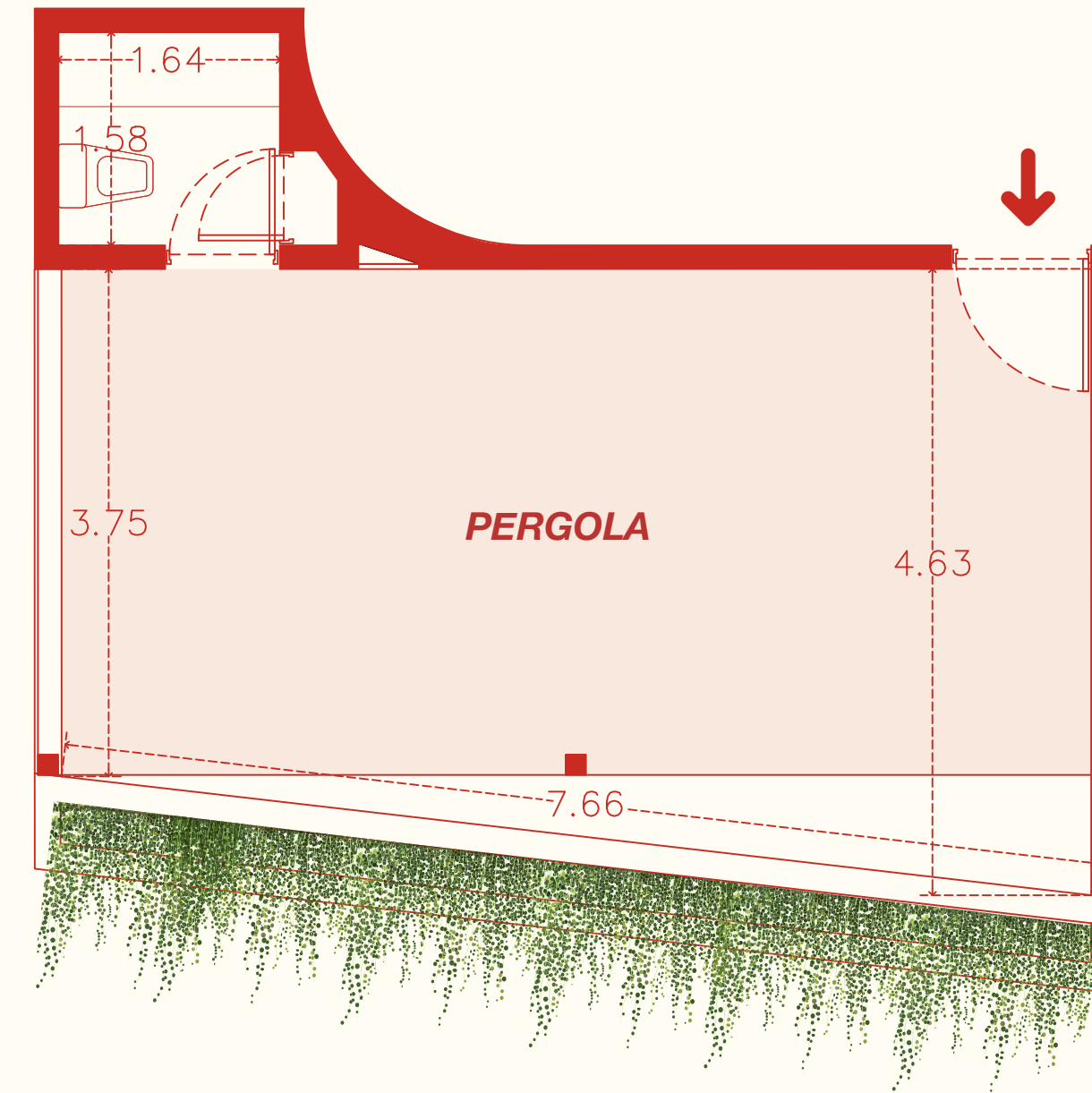
Main avenue front



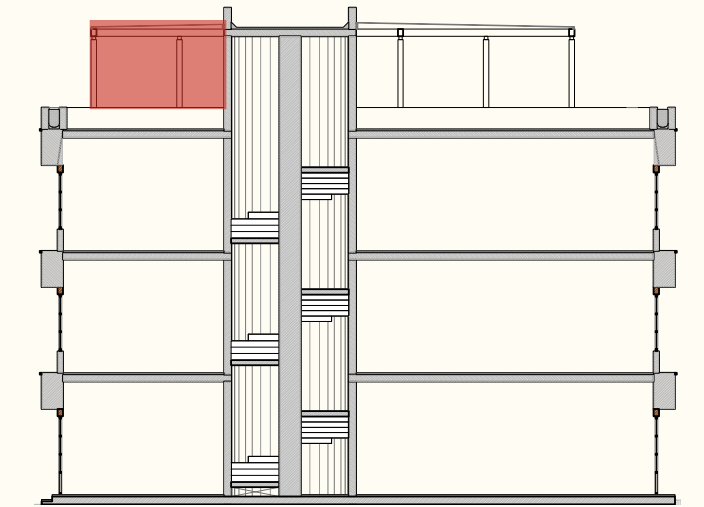
SCHEMATIC SECTION

No.402

478 qsft²



Front pedestrian Street



SCHEMATIC SECTION



PAYMENT PLANS

LEVEL	NUMBER	sqft ²	PRICE USD
N1	Local - 101	642	\$221,189
N1	Local - 102	368	\$113,373
N2	Local - 201	703	\$204,048
N2	Local - 202	478	\$130,163
N3	Local - 301	703	\$178,542
N3	Local - 302	489	\$115,343
N4	Local - 401	736	\$160,056
N4	Local - 402	478	\$95,453

PLAN	DISCOUNT	DOWN PAYMENT	DURING CONSTRUCTION	AT DELIVERY
A	0%	20%	20%	60%
B	3%	20%	40%	40%
C	6%	20%	60%	20%

DELIVERY SPECIFICATIONS

Building Shell, HEBEL thermal cellular concrete block and slab, hydraulic and sanitary outlets without equipment, electrical outlet on the ceiling for lighting distribution, PVC windows.

DATE OF DELIVERY : APRIL 2023





ANEMONA