



BB

BOHÈME

TULUM

BB
BOHÈME
TULUM



FACADE
*The image presented is for illustrative purposes only and may change without notice during the construction process.

TULUM

Tulum is an exotic town in Mexico recognized worldwide for its beautiful beaches, mystical cenotes among exuberant jungles, and its interesting archaeological zone built by Mayan civilizations. Located on the coast of the Caribbean Sea in the southeast of the country.

Tulum has stood out internationally thanks to its bohemian lifestyle, variety of ecological activities, and strong growth in infrastructure, becoming an attractive destination for tourism and economic investment.

This fashionable paradise offers many hotels, restaurants, bars, and spiritual centers designed impeccably to blend into the nature of its rustic scenery, being and opportunity to connect with the environment.

Without a doubt, Tulum is where you have to be living the Bohème life.

BBT



TULUM

LOCATION AND DISTANCES



12 min. from the
Archaeological area



green school
TULUM

8 min. from
Green School Tulum



3 min. from
Kukulcan Avenue



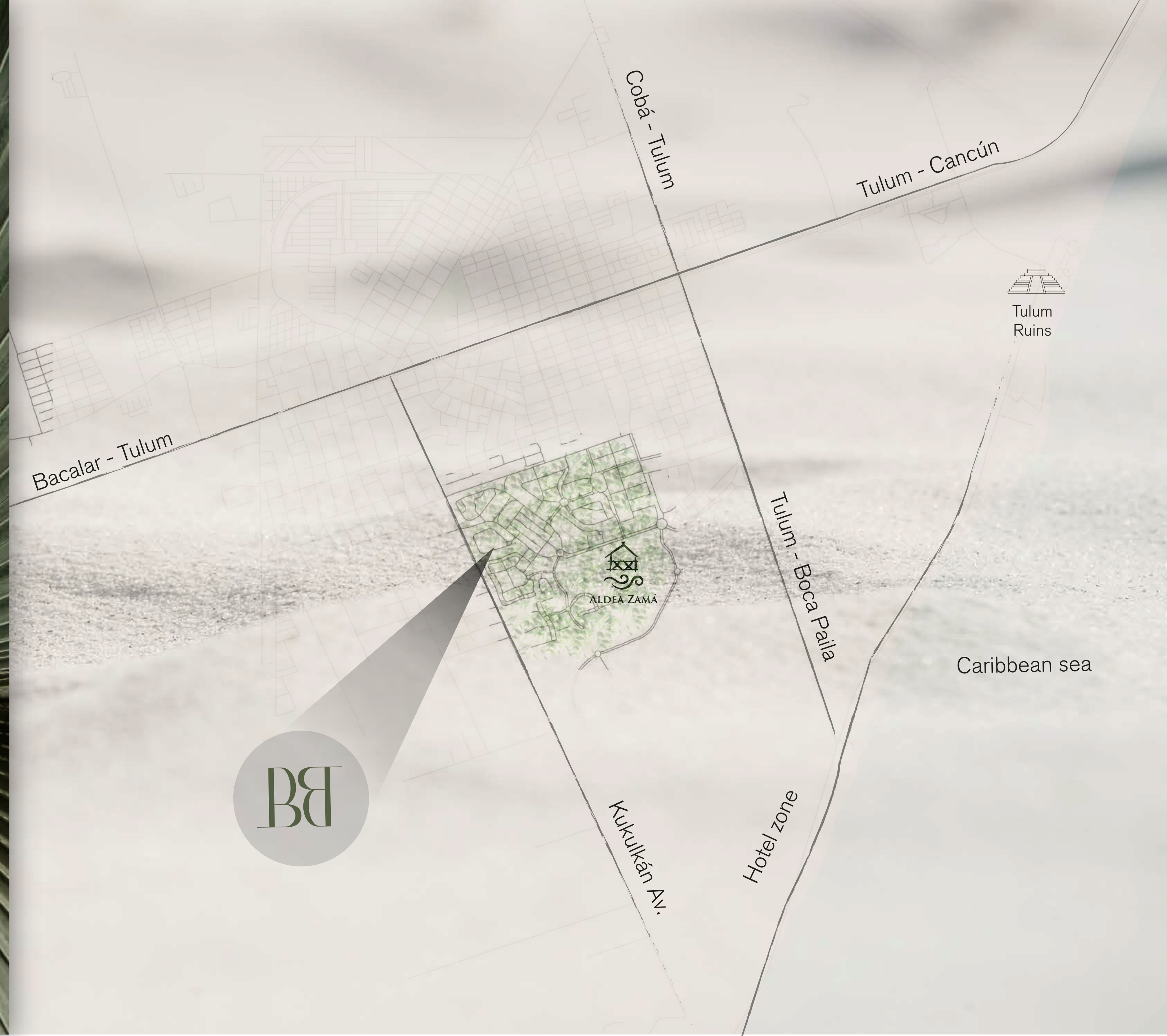
5 min. from
center of Tulum



8 min. from
the beach

BOHÈME

TULUM





BB BOHÈME

TULUM

Bohème is a 12-unit housing development immersed in the jungle of the exclusive Aldea Zama Premium subdivision offering a bohemian, serene and charming lifestyle. Inspired by the beaches of Tulum, Mayan architecture and the philosophy of the Wabi Sabi concept, this project was designed in harmony with nature and the beauty of the place, has amenities such as a rooftop with an infinity pool and solarium, common area with barbecue, gym, spa, coworking area, elevator, children's play area, parking lot, and security booth, inviting all users to relax and enjoy all the spaces comfortably.

All units have two bedrooms and two full bathrooms, full kitchen, living room, dining room, laundry room, and terrace or balcony. In addition, some of them have a private pool, barbecue bar and lock-off area.

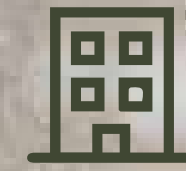
The functionality in its modern architectural distribution and the aesthetics in its stylish casual interior design, cozy and elegant at the same time, make Bohème an exceptional property for those with a free spirit who seek sophistication within imperfection in organic forms and rustic materials.

AERIAL

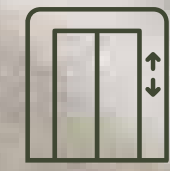
*The image presented is for illustrative purposes only and may change without notice during the construction process.



AMENITIES



3 levels



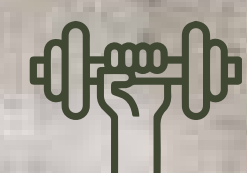
Elevator



Parking



Yoga area



Gym



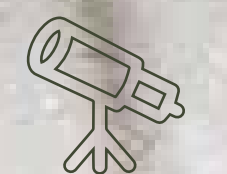
Infinity pool



Coworking area



Solarium



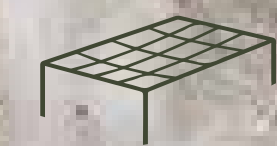
Viewpoint



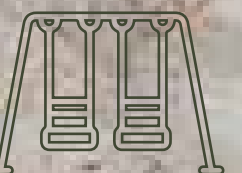
Security booth



Terrace with bar and grill



Aquatic bed



Children's area

BOHÈME

TULUM

BB



BB



BB



ROOFTOP
The image presented is for illustrative purposes only and may change without notice during the construction process.



ROOFTOP

*The image presented is for illustrative purposes only and may change without notice during the construction process.

BB



GYM
*The image presented is for illustrative purposes only and may change without notice during the construction process.

BB



ROOFTOP

*The image presented is for illustrative purposes only and may change without notice during the construction process.





SPA / CHILDREN'S PLAY AREA

*The image presented is for illustrative purposes only and may change without notice during the construction process.

BB BOHÈME

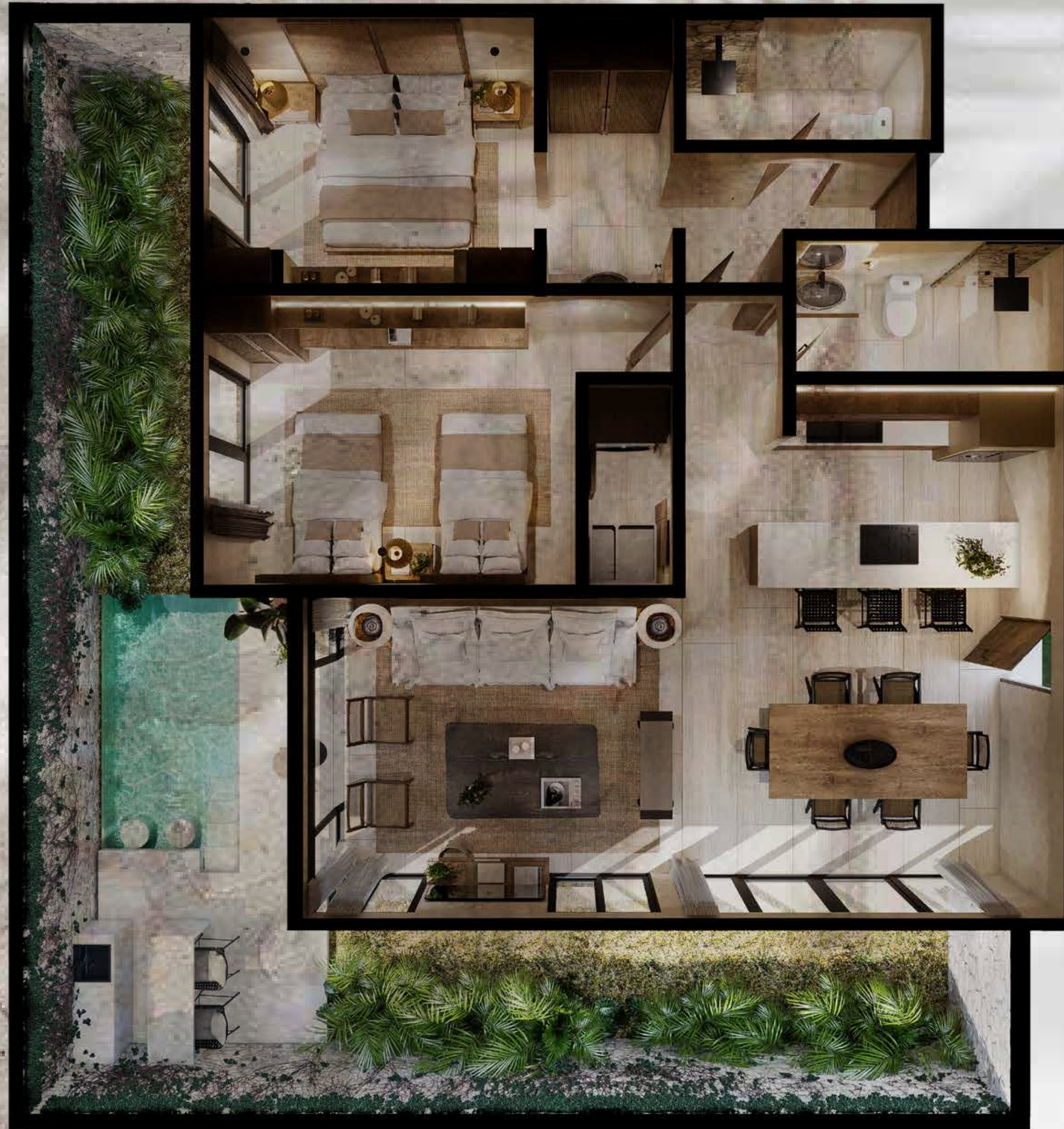
TULUM

TIPOLOGY - A -

APARTMENT N° 1 6 N° 4 (FACADE)

INTERIOR	1140.97 SQFT
EXTERIOR	129.16 SQFT
POOL	75.34 SQFT
GARDEN	344.44 SQFT
TOTAL CONSTRUCTION	1689.93 SQFT

LIVING ROOM | DINING ROOM | KITCHEN | LAUNDRY ROOM |
MASTER BEDROOM WITH FULL BATHROOM, WALK-IN CLOSET
AND LOCK OFF | SECOND BEDROOM WITH CLOSET |
GUEST BATHROOM | PRIVATE TERRACE WITH SWIMMING POOL
AND PRIVATE LOCK OFF | SECONDARY BEDROOM WITH CLOSET
| GUEST BATHROOM | PRIVATE TERRACE WITH POOL AND
BARBECUE BAR





BB BOHÈME

TULUM

TIPOLOGÍA - A -

APARTMENTS N° 5 & N° 8 (FACADE)

INTERIOR	1140.97 SQFT
EXTERIOR	182.98 SQFT
TOTAL DE CONSTRUCTION	1334.72 SQFT

LIVING ROOM | DINING ROOM | KITCHEN | LAUNDRY ROOM |
MASTER BEDROOM WITH FULL BATHROOM, WALK-IN CLOSET |
SECONDARY BEDROOM WITH CLOSET | GUEST BATHROOM |
BALCONY



BB BOHÈME

TULUM

TIPOLOGY - A -

APARTMENT N° 9 & N° 12 (FACADE)

INTERIOR	1140.97 SQFT
EXTERIOR	312.15 SQFT
TOTAL CONSTRUCTION	1435.13 SQFT

LIVING ROOM | DINING ROOM | KITCHEN | LAUNDRY ROOM |
MASTER BEDROOM WITH FULL BATHROOM, WALK-IN CLOSET |
SECONDARY BEDROOM WITH CLOSET | GUEST BATHROOM |
BALCONY WITH GARDEN



LIVING ROOM - DINING ROOM

*The image presented is for illustrative purposes only and may change without notice during the construction process.



LIVING ROOM

The image presented is for illustrative purposes only and may change without notice during the construction process.



BEDROOM

*The image presented is for illustrative purposes only and may change without notice during the construction process.

BB



BATHROOM

*The image presented is for illustrative purposes only and may change without notice during the construction process.

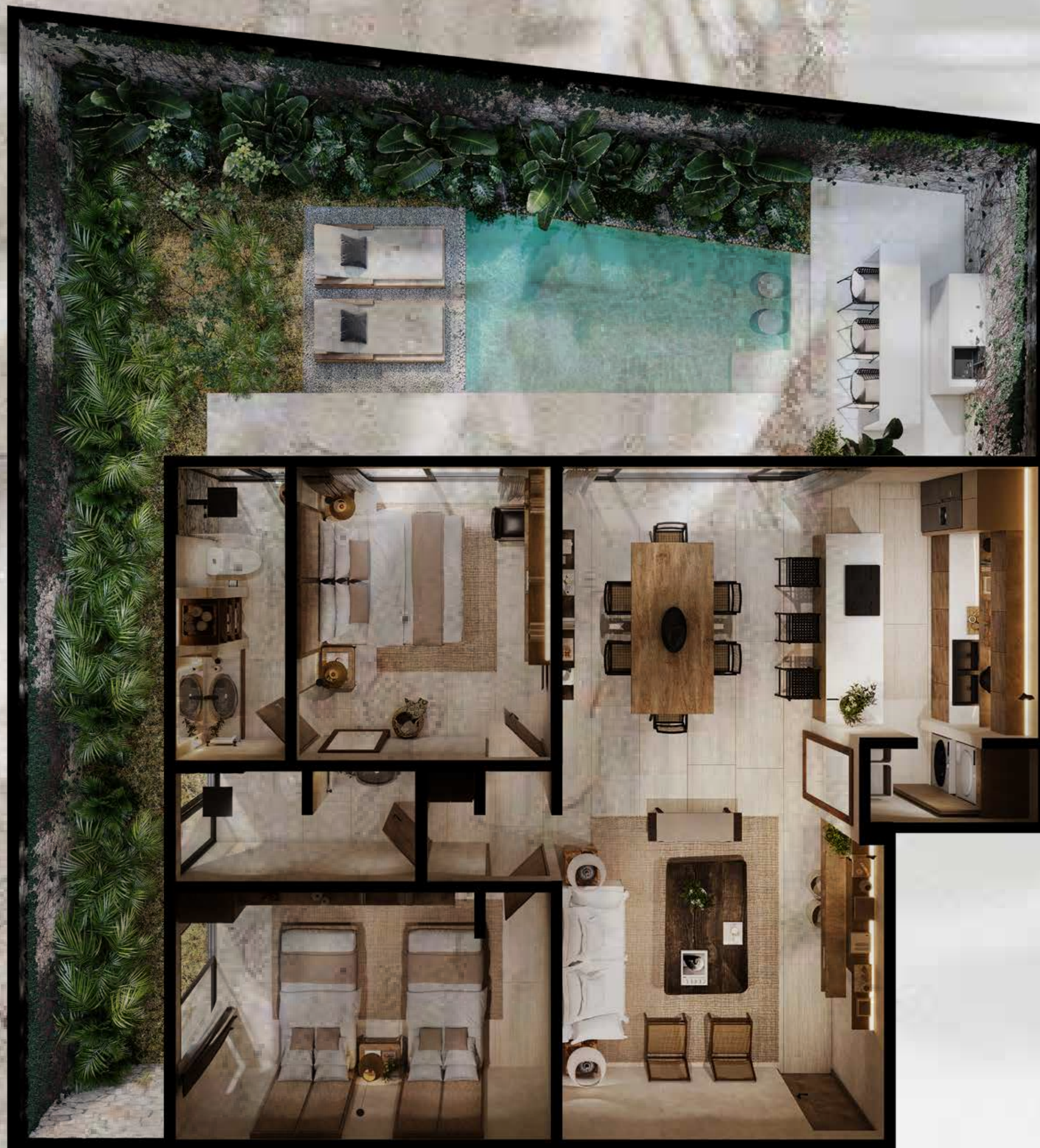


BB BOHÈME

TULUM

TIPOLOGY - B -

APARTMENTS N° 2 & N° 3 (BACK FACADE)



	N°2	N°3
INTERIOR	1119.45 SQFT	1119.45 SQFT
EXTERIOR	161.45 SQFT	161.45 SQFT
POOL	75.34 SQFT	75.34 SQFT
GARDEN	678.12 SQFT	559.72 SQFT
TOTAL CONSTRUCTION	2034.38 SQFT	1925.98 SQFT

MASTER BEDROOM WITH FULL BATHROOM AND CLOSET |
SECONDARY BEDROOM WITH CLOSET | GUEST BATHROOM |
LIVING ROOM | DINING ROOM | KITCHEN | POOL AND
BARBECUE BAR | PRIVATE TERRACE.

BB BOHÈME

TULUM

TIPOLOGY - B -

APARTMENTS N° 6, N° 7, N° 10 & N° 11 (BACK FACADE)

INTERIOR

1119.45 SQFT

EXTERIOR

129.16 SQFT

TOTAL CONSTRUCTION

1248.61 SQFT

MASTER BEDROOM WITH FULL BATHROOM AND CLOSET |
SECONDARY BEDROOM WITH CLOSET | GUEST BATHROOM |
GUEST BATHROOM | LINEN CLOSET | LIVING ROOM |
DINING ROOM | KITCHEN | BALCONY.





LIVING ROOM - DINING ROOM

*The image presented is for illustrative purposes only and may change without notice during the construction process.



KITCHEN - DINING ROOM

*The image presented is for illustrative purposes only and may change without notice during the construction process.





BEDROOM - BATHROOM

*The image presented is for illustrative purposes only and may change without notice during the construction process.



TERRACE WITH POOL

The image presented is for illustrative purposes only and may change without notice during the construction process.

BB



KITCHEN DINNING ROOM SECOND LEVEL

*The image presented is for illustrative purposes only and may change without notice during the construction process.





LIVING DINNING ROOM SECOND LEVEL

*The image presented is for illustrative purposes only and may change without notice during the construction process.



BEDROOM SECOND LEVEL

*The image presented is for illustrative purposes only and may change without notice during the construction process.

BB



BATHROOM SECOND LEVEL

*The image presented is for illustrative purposes only and may change without notice during the construction process.



“In te ravviso –Il sogno ch’io vorrei sempre sognar!”

“En ti, veo los sueños que siempre he soñado!”

- Giacomo Puccini

La Bohème (1896)

Bohème is the ideal place to maximize the utility of your investment in a property that can be enjoyed with family and friends, for vacation or temporary rental.

BOHÈME

TULUM