

The background of the image is a dense, close-up view of large, vibrant green tropical leaves, likely from a banana plant. The leaves are layered, creating a sense of depth and texture. The lighting is soft, highlighting the veins and edges of the foliage. A dark, semi-transparent rectangular box is centered over the image, serving as a backdrop for the text.

K A A B I N

JUNGLE LIVING

In the heart of the
Mayan jungle,
enjoy the comforts of the
modern city while being
surrounded by the
native environment.

This is the new
“Jungle Living” concept







KAABIN is a project formed by 76 exclusive units with 6 typologies, each of its details in all spaces creates an environment full of nature, the elegance of the finishes and natural materials fused together create a perfect balance resulting in unique experiences.

T U L U M

A magical town located in the southern area of the Riviera Maya, just 40 minutes from Playa del Carmen and hour and a half from Cancun.

The main attraction in the area is to visit the Mayan vestiges in Tulum.

This legendary archaeological zone is the only Mayan city built in front of the **Caribbean Sea**.

Tulum is also the perfect getaway for being in contact with nature, enjoy your relaxing vacation and discover this Paradise.


















Was planned in a strategic area in Tulum, just a couple of blocks from **Kukulcan Avenue**, one of the two main entrances that connect directly to the hotel zone and the beautiful beaches.



amenities



-  Organic garden
-  Firepit / Cinema
-  Bar
-  Playground
-  Coworking
-  Hammock area
-  Game room
-  Gym
-  Restaurant
-  Yoga area
-  Skyview tower
-  Family Pool
-  Lobby

GROUND FLOOR



-  Pool
-  Grill
-  Laundry
-  Sundeck

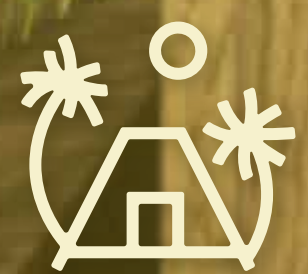
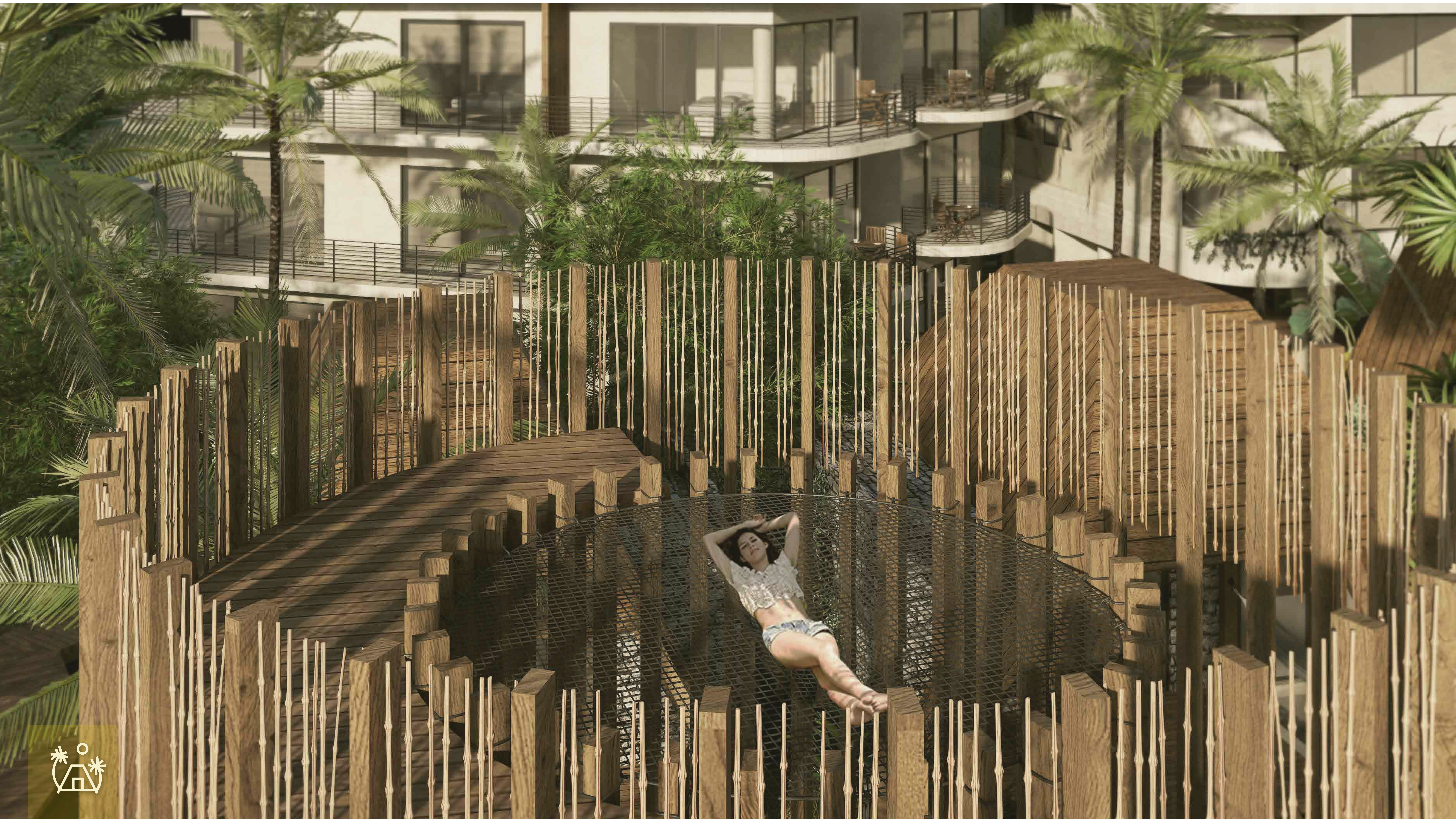
ADDITIONALLY WE OFFER:

-  Agreement with Beach Club
-  Parking
- Property Management Company













2 BEDROOM

LOCK OFF
GARDEN W/ POOL

INTERIOR

92 m² / 990.28 sq ft

EXTERIOR

40 m² / 430.55 sq ft

60 M² / 645.83 sqft

TOTAL

192 m² / 2066.67 sqft





2 BEDROOM

LOCK OFF
+ ROOFTOP

INTERIOR

92 m² / 990.28 sq ft

EXTERIOR

12m² / 129.167 sq ft

80 m² / 861.11 sqft

TOTAL

184 m² / 1980.56 sqft





2 BEDROOM

LOCK OFF

INTERIOR

92 m² / 990.28 sq ft

EXTERIOR

40 m² / 430.55 sq ft

TOTAL

132 m² / 1420.84 sqft





2 BEDROOM

LOCK OFF

INTERIOR

92 m² / 990.28 sq ft

EXTERIOR

12m² / 129.167 sq ft

TOTAL

104 m² / 1119.45 sqft



1 BEDROOM

INTERIOR

62 m² / 667.36 sq ft

EXTERIOR

6 m² / 64.58 sq ft

TOTAL

68 m² / 731.9 sqft



STUDIO



INTERIOR

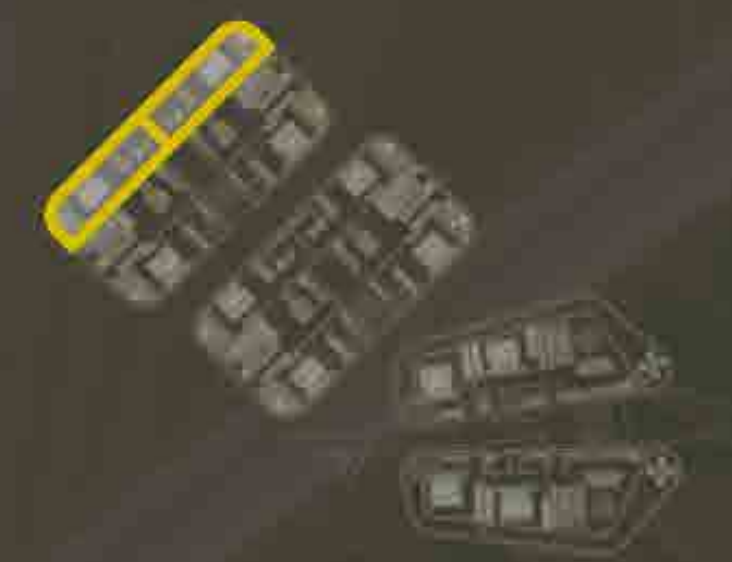
30 m² / 322.91 sq ft

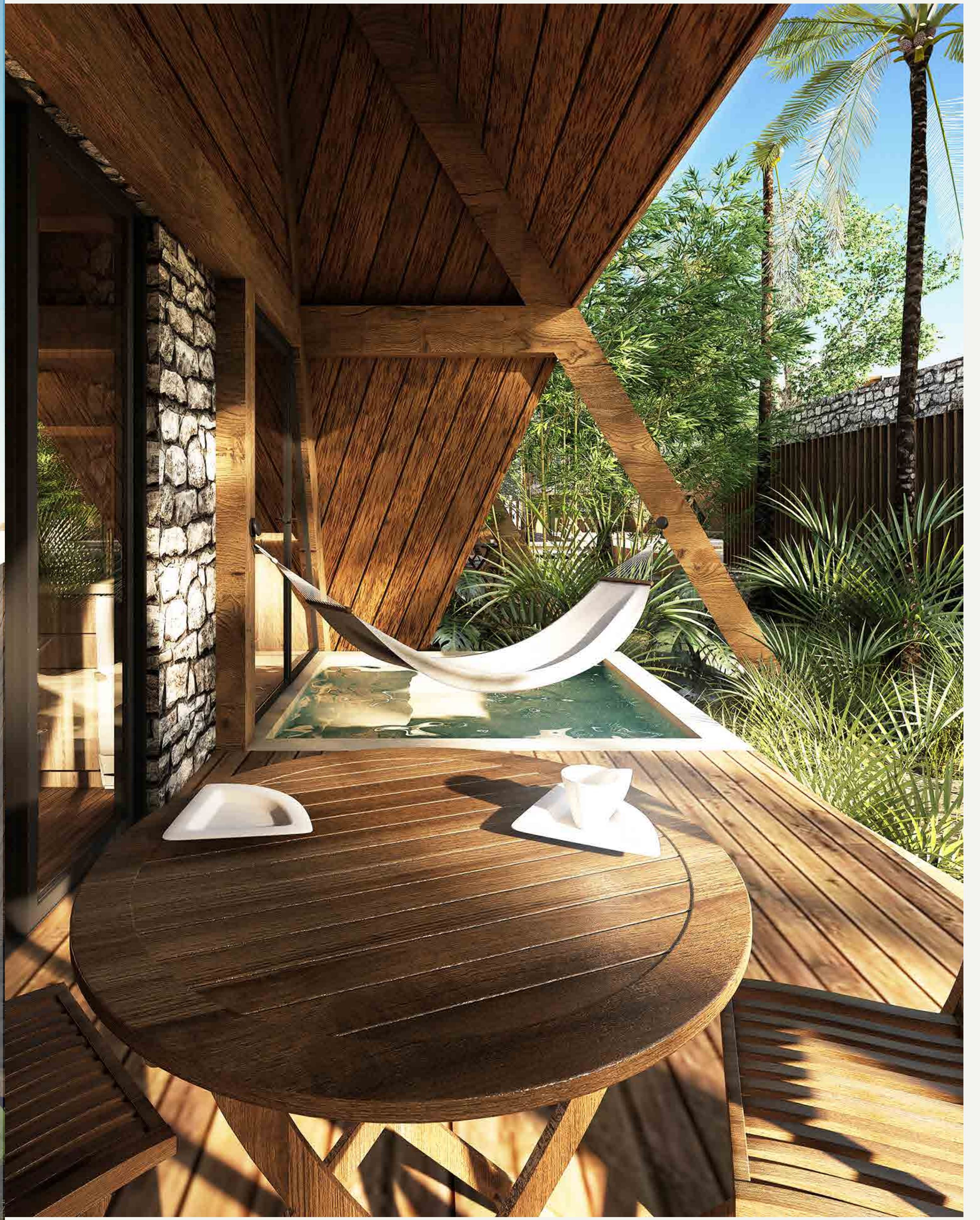
EXTERIOR

6 m² / 64.58 sq ft

TOTAL

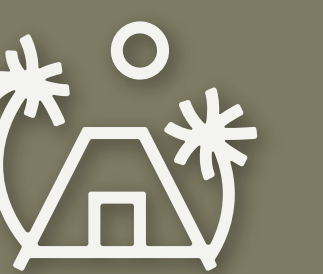
36 m² / 387.50 sqft

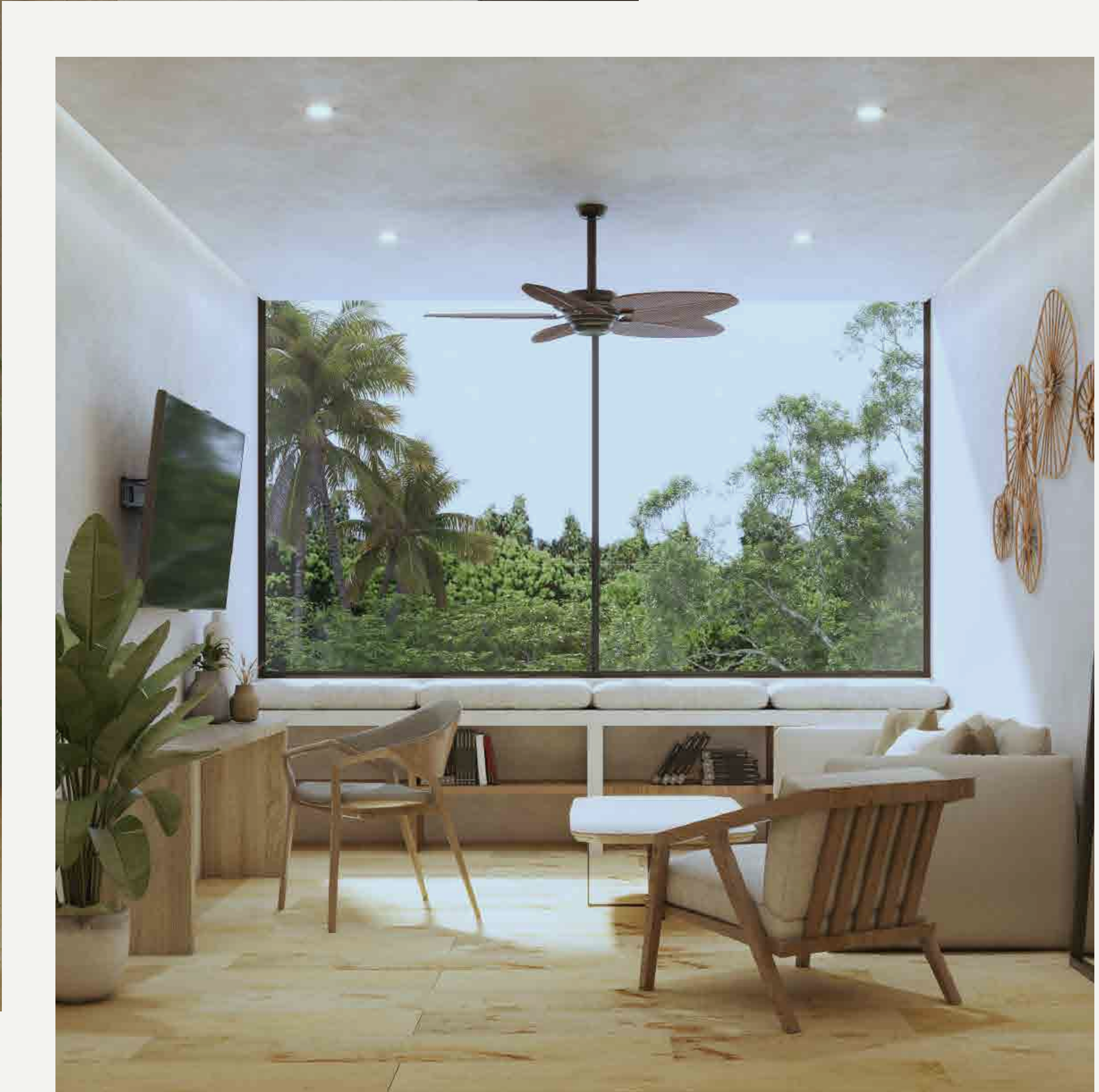
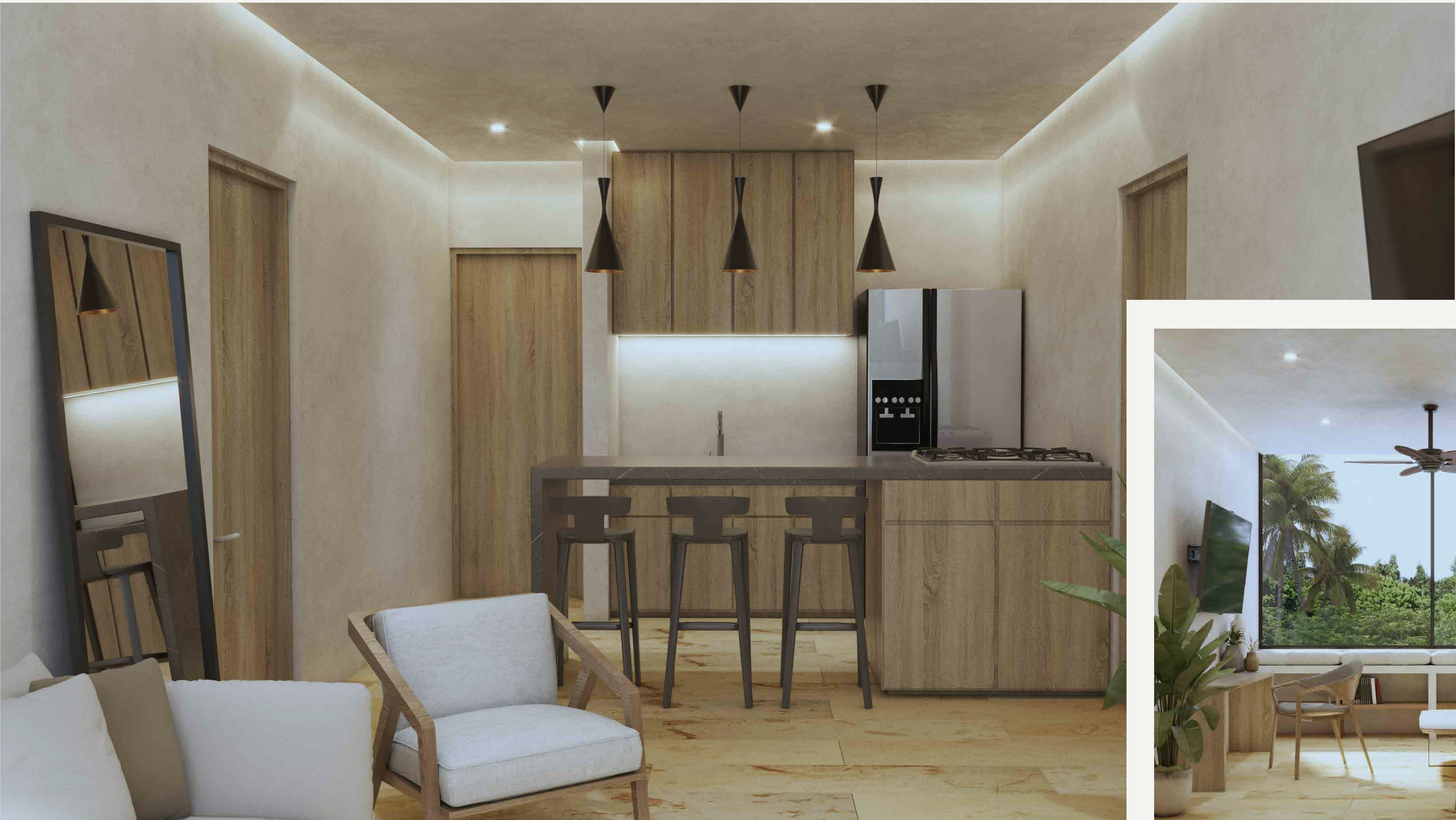




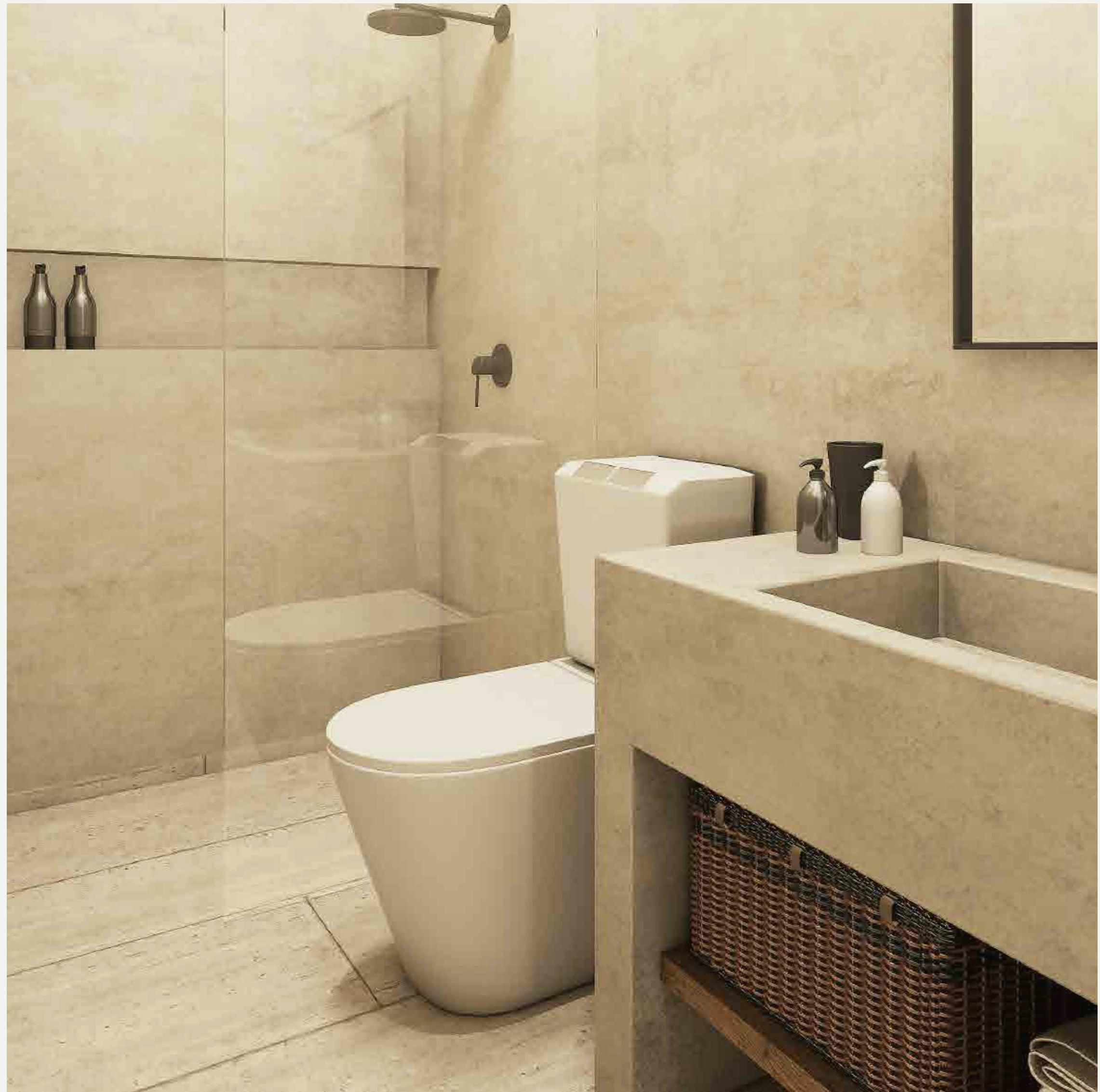


Illustrative images





Illustrative images



Illustrative images

Welcome to the Jungle



KAABIN
JUNGLE LIVING