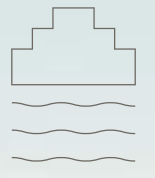


MONA  
VIE *BOUTIQUE  
LIVING*

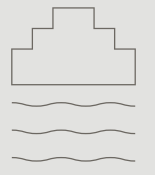
MONAVIE



Tulum – *Mex*

TULUM /

BOUTIQUE LIVING



Paradise comes in many forms, but the best one is yours.

## *Welcome to your own paradise.*

Riviera Maya, land of paradises, renowned for its jungles, cenotes and ancestral villages. Here, always close to the privileged turquoise Caribbean sea and its white sands, is the perfect setting to find fulfillment.

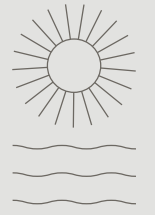
*Discover this exclusive project of 4 housing units and 2 commercial spaces whose only objective is to offer you the opportunity to live in this ecotouristic paradise.*

TULUM



Paradise,  
*your style.*

BOUTIQUE LIVING



## Megan Dalmau Buensuceso

*Architect*

*Founder of DalmauBuensuceso*, Megan Dalmau has been a fundamental part of incredible projects since the beginning of her career, such as the Koi Tower and Las Torres Liu with PMP and later venturing into horizontal housing with SPAIC, where she received a nomination at the CEMEX awards for work of the year by Architectural Digest Mexico.

Today her office DalmauBuensuceso based in Monterrey, Nuevo León has allowed her to express her creative vision, developing real estate projects in Los Angeles, Paris, Mexico City, Tulum, San Miguel de Allende, among others.

With a style that she herself defines as eclectic, her work methodology based on **"Quality over quantity"** aims to provide her clients with more than just developments — but rather stories that reflect in each of her projects.



## Aldea Zama

**Aldea Zama** is a unique project in the heart of the mythical city of Tulum, fusing contemporary luxury with the mystical energy of the Mexican Caribbean, while at the same time it ponders the importance of caring for the planet.

It is a residential project located less than 2 hours from Cancun and only 1 hour from Playa del Carmen, making the coordinates of your own paradise more than privileged.



*Aldea Zama is based on an avant-garde marketing and construction model and its integration with nature makes it an incomparable option.*

TULUM /

# MONA VIE

BOUTIQUE  
LIVING

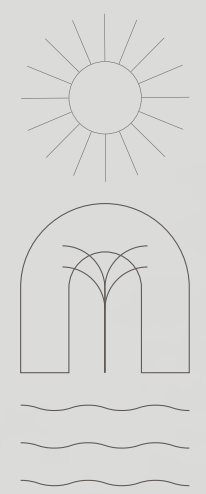
**Mona Vie** is an exclusive boutique development that puts its inhabitants in balance with nature and integrates them with the **Aldea Zama** community.

Consisting of 4 housing units, 2 large commercial spaces and all of this crowned by a majestic rooftop. MonaVie becomes a development that promises both comfort and luxury.

*Discover our obsessive attention to detail and be part of this paradise.*



*in the Mexican Caribbean*



*Your paradise*



*Boutique Living*



*Come live in this Mexican paradise and let yourself be immersed in the sun, the jungle and the sea.*





# Comfortable, exclusive and *unparalleled*

*Lofts*



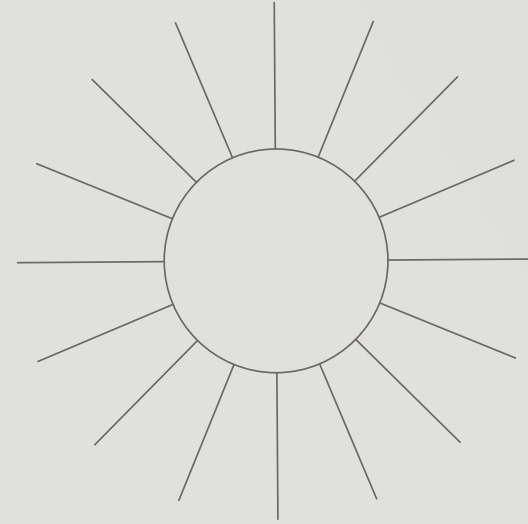
*Amenities*



*Commercial*



*We carefully selected the best materials, the highest quality finishes and integrate them harmoniously into your lifestyle so you can feel the ownership of paradise every day.*

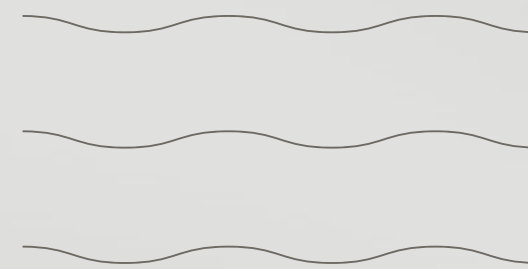


MONA VIE

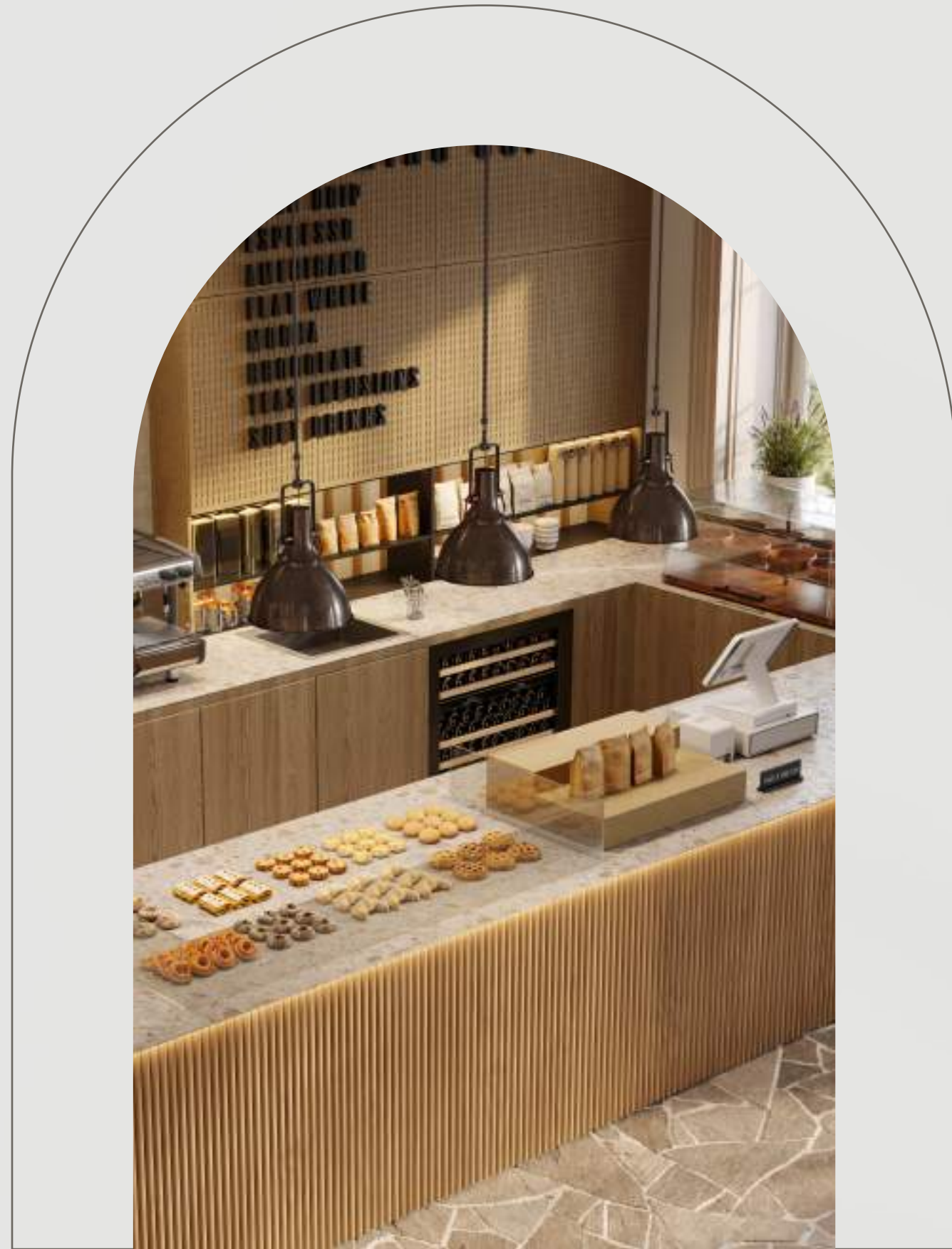


## *Commercial Units*

In our privileged location, MonaVie becomes a dream place for your business. In the heart of Aldea Zama, with its pedestrian corridors, green areas and parking, it is the commercial area par excellence for your business.



*BOUTIQUE LIVING*

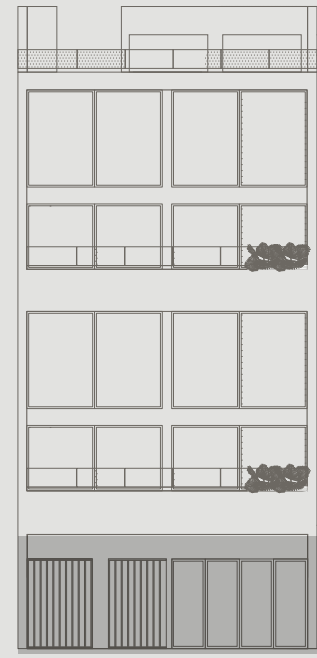


*From a coffee shop to a yoga studio or even a small restaurant, our premises are perfectly adapted to your needs*

MONAVIE

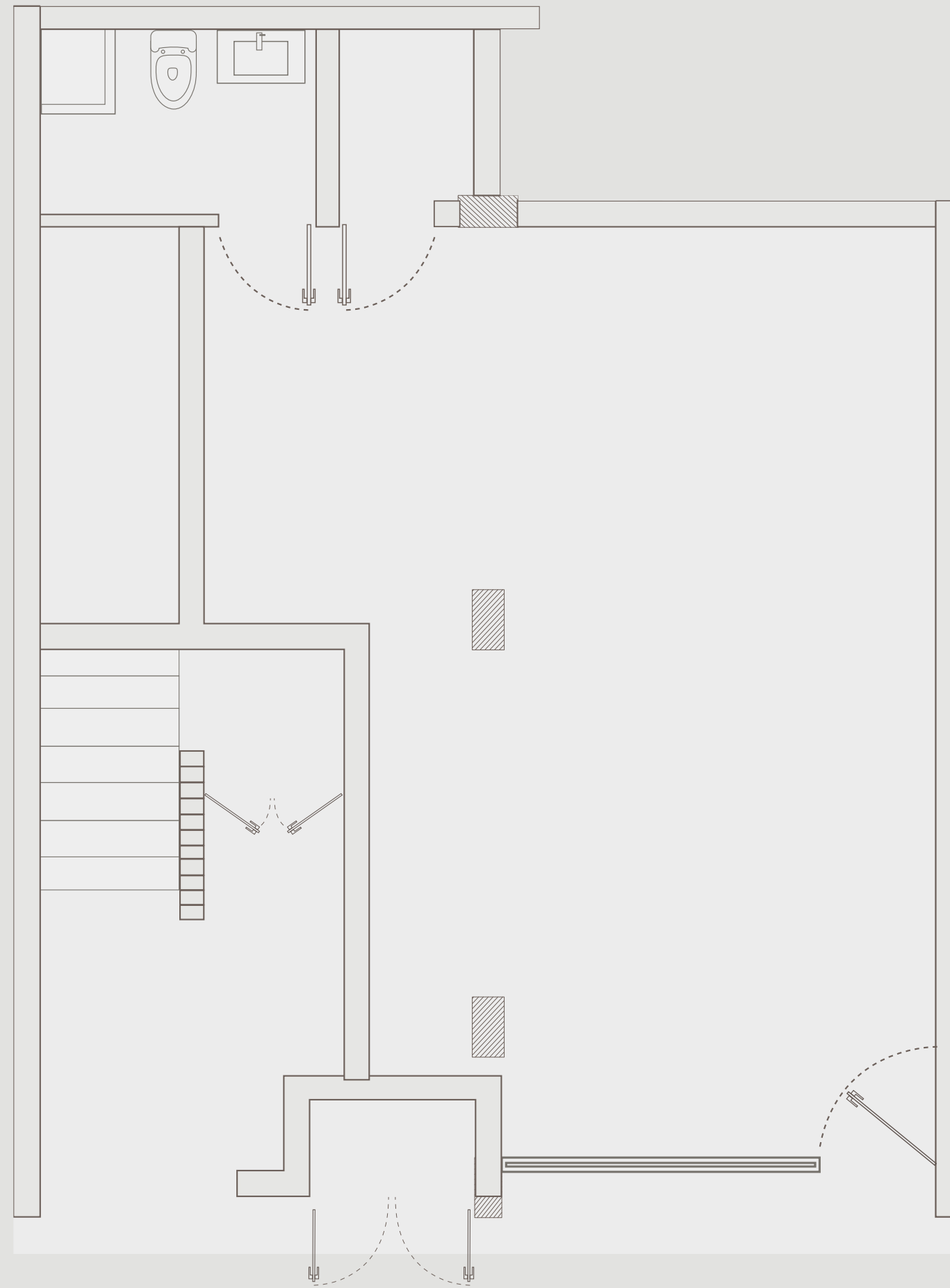


*Commercial Unit 1*



*Surface*

 Total Area  
559.29 ft<sup>2</sup>



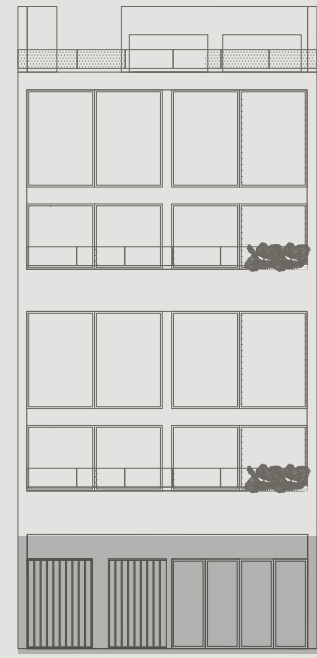
TULUM /

COMERCIAL

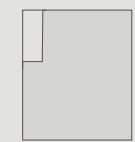
MONAVIE



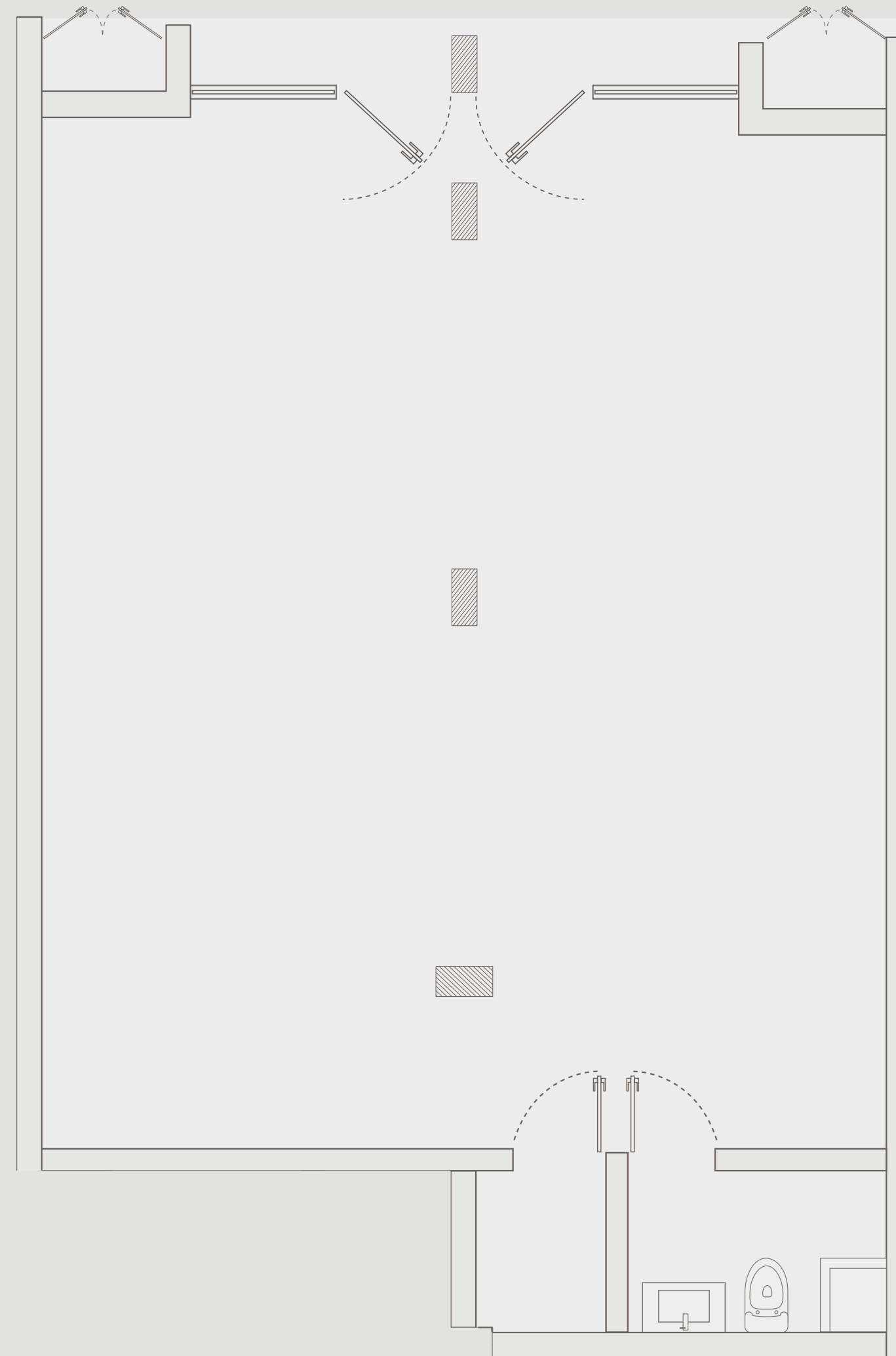
*Local Comercial 2*



*Surface*

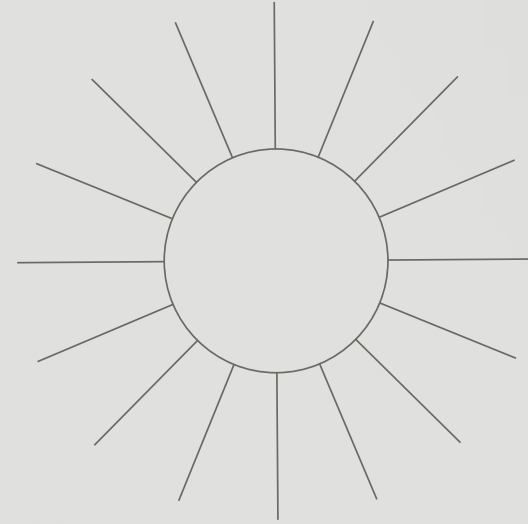


Total Area  
920.52 ft<sup>2</sup>



TULUM /

COMMERCIAL



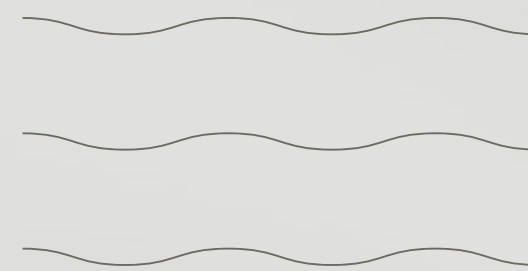
MONA VIE



## *Lofts*

The Lofts at MonaVie were designed with luxury and functionality in mind, making the most of the spaces and prioritizing your comfort at all times.

The most exclusive spaces and the amenities that best suit your lifestyle await you.



*BOUTIQUE LIVING*



LOFT







LOFT



LOFT



LOFT



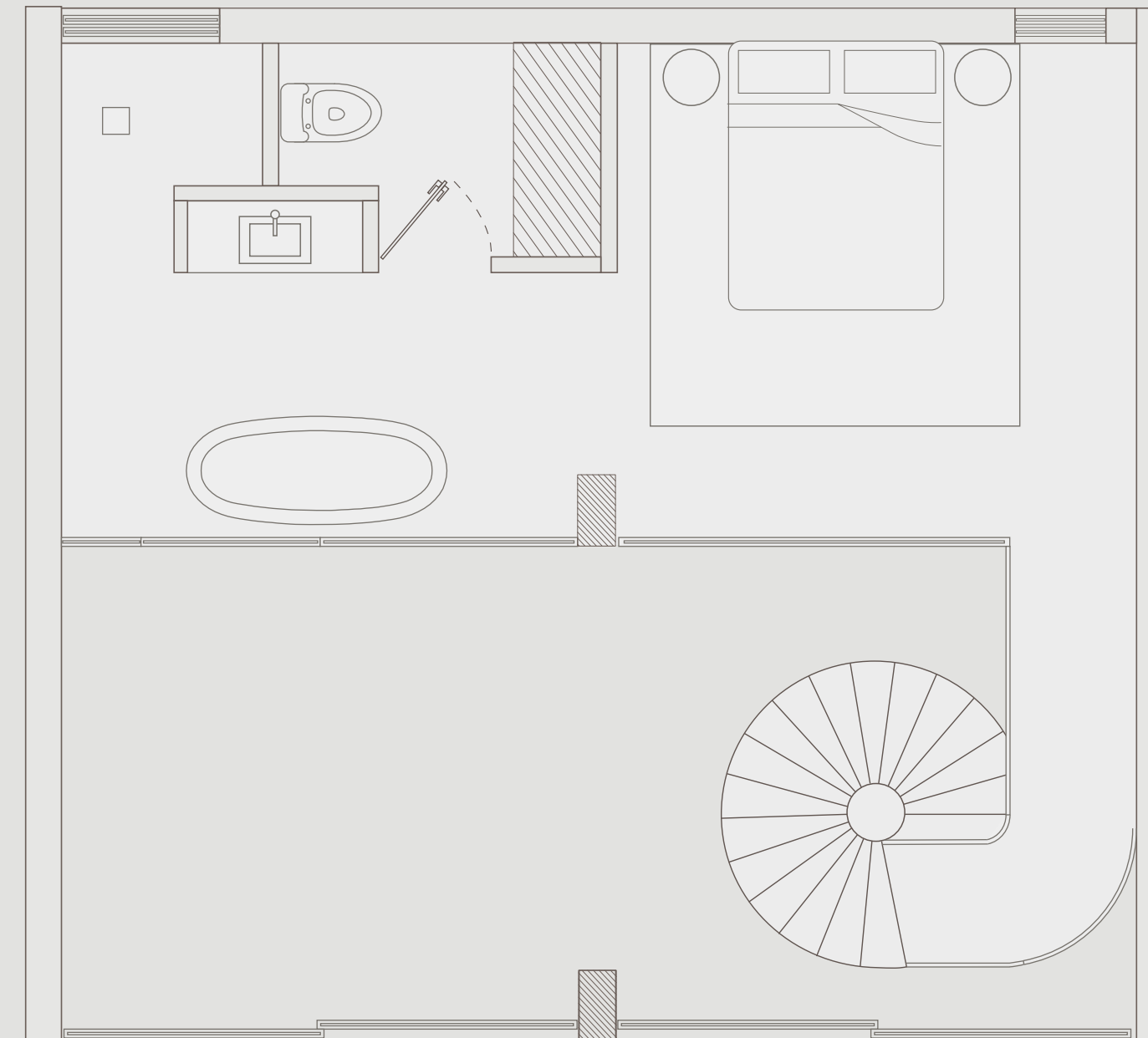
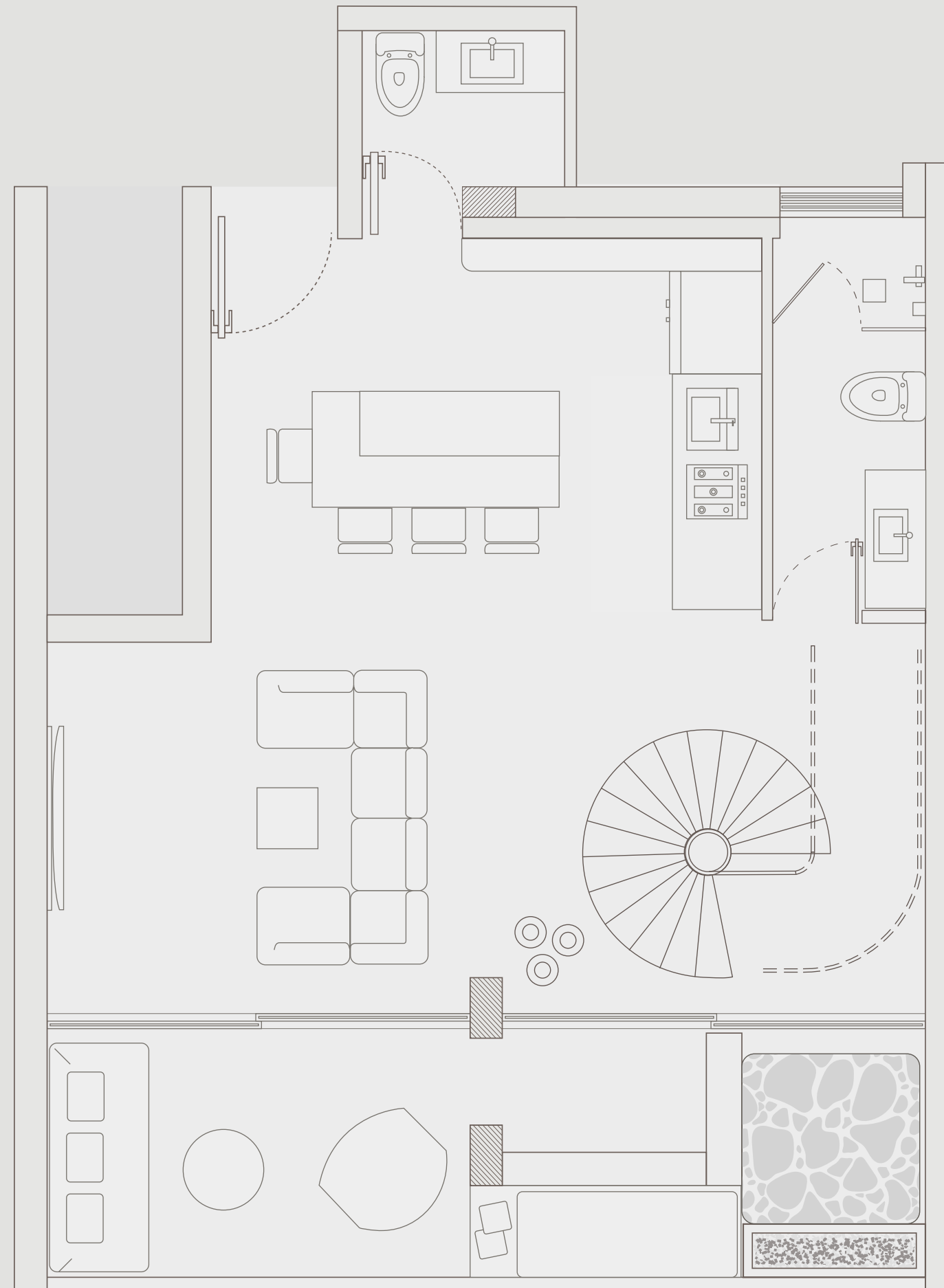
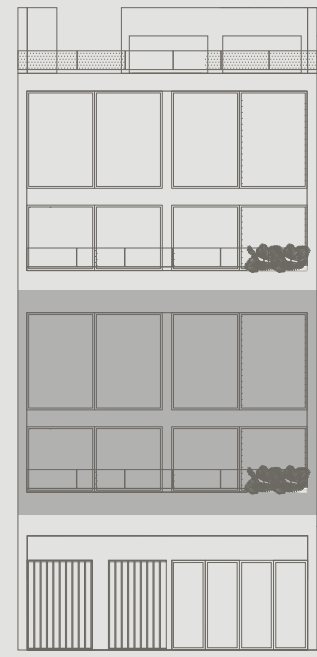
LOFT



LOFT



Loft 1



Surface

-  Interior  
604.82 ft<sup>2</sup>
-  Balcony  
202.90 ft<sup>2</sup>
-  Mezzanine  
340.03 ft<sup>2</sup>
-  Total Area  
1147.75 ft<sup>2</sup>

Areas

Living Room

Kitchen / Dining Room

Balcony with Plunge Pool

Full Bathroom on Ground floor

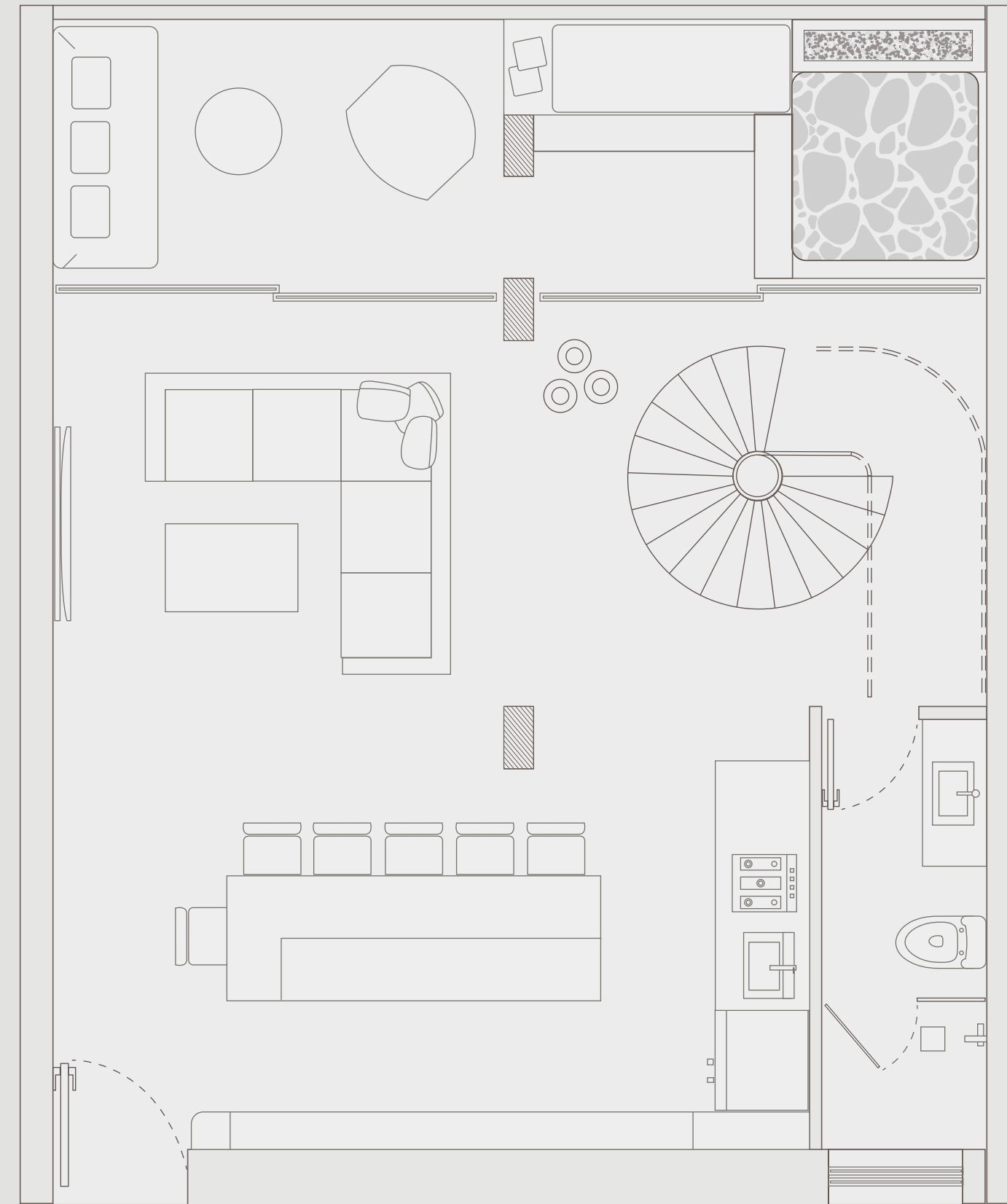
Mezzanine with bedroom  
and full bathroom.

Bathroom / Storage



Surface

- Interior  
629.15 ft<sup>2</sup>
- Balcony  
202.90 ft<sup>2</sup>
- Mezzanine  
340.03 ft<sup>2</sup>
- Total Area  
1172.08 ft<sup>2</sup>



Areas

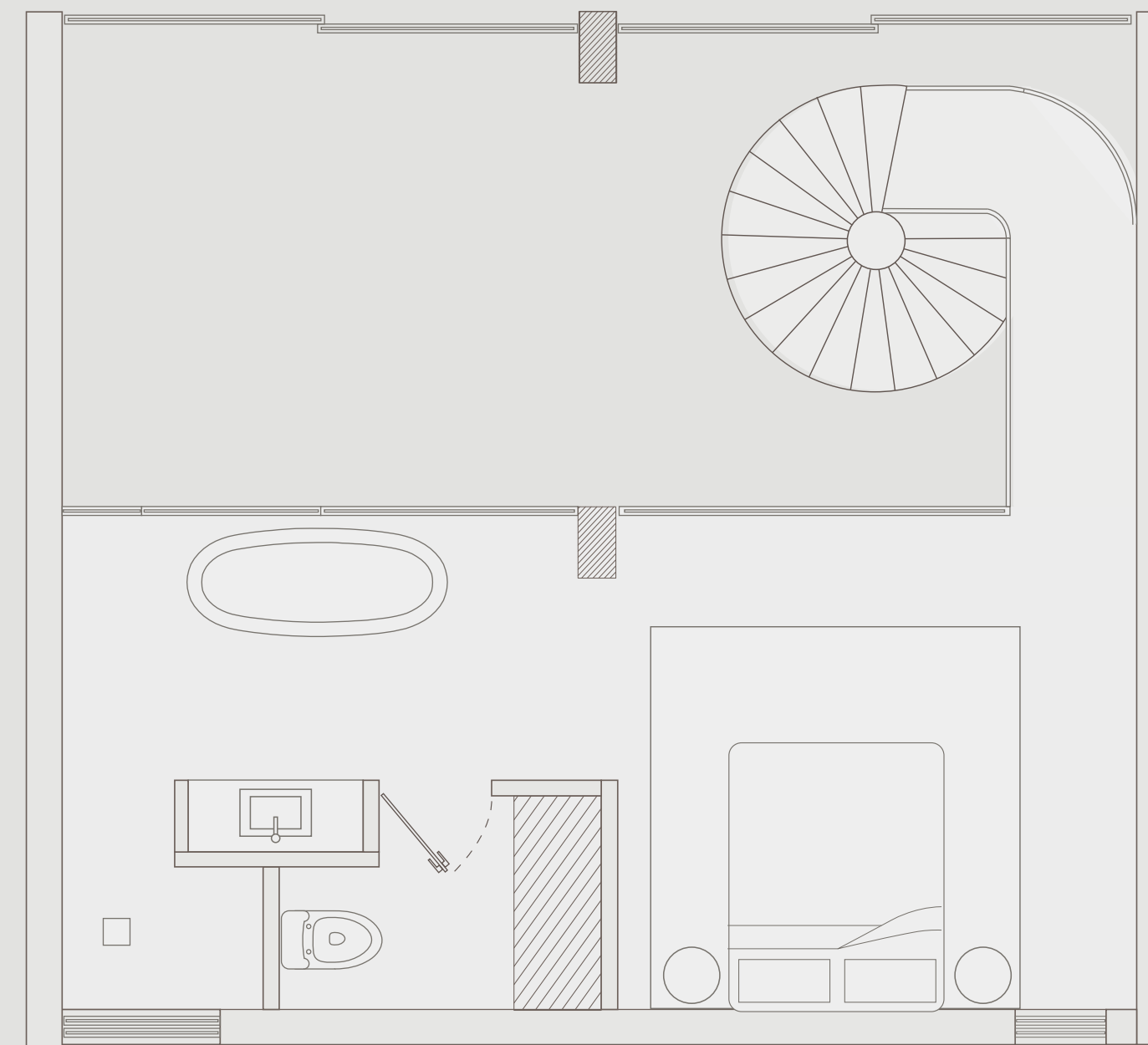
Living Room

Kitchen / Dining room

Balcony with Plunge Pool

Full Bathroom on Ground Floor

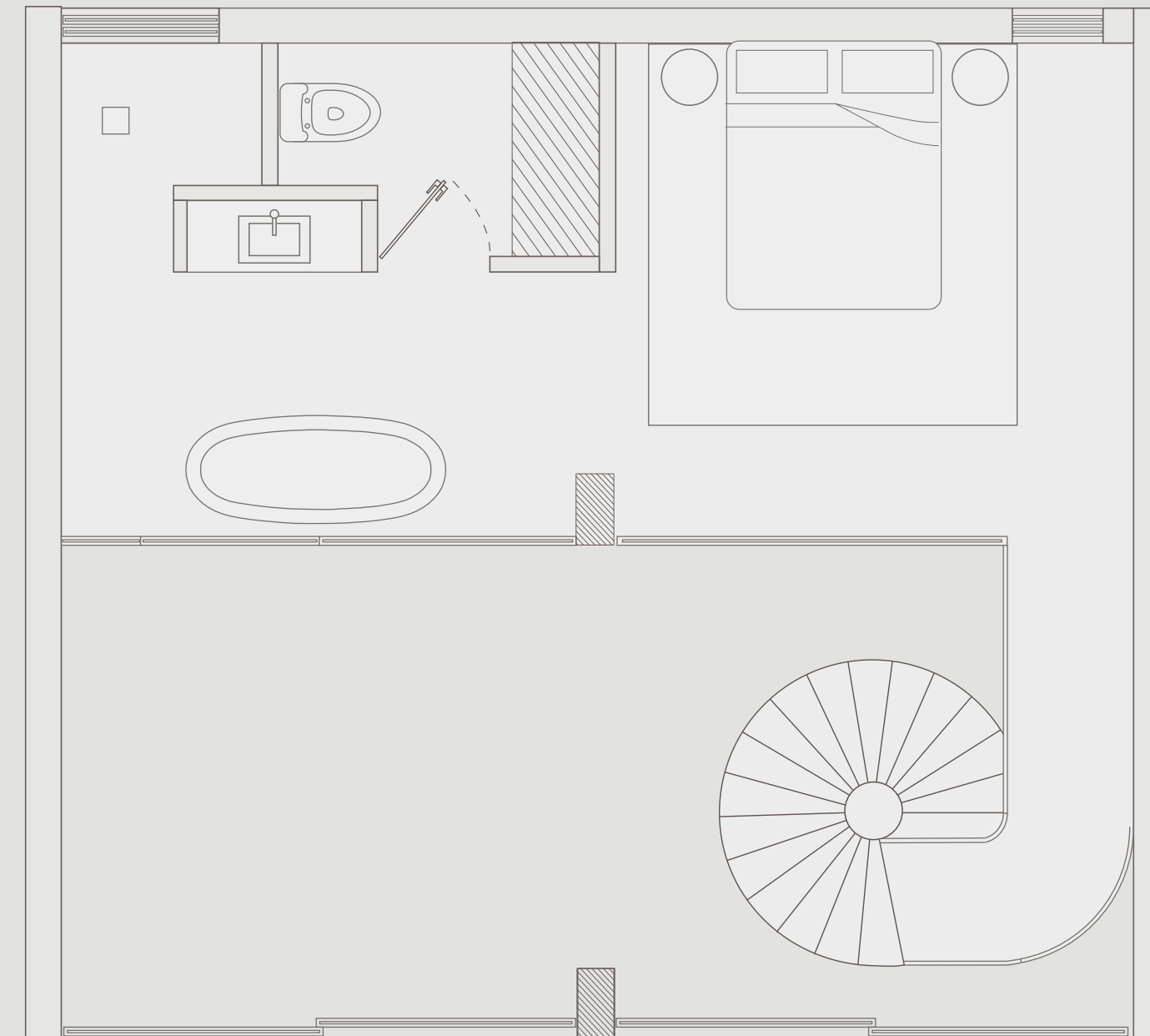
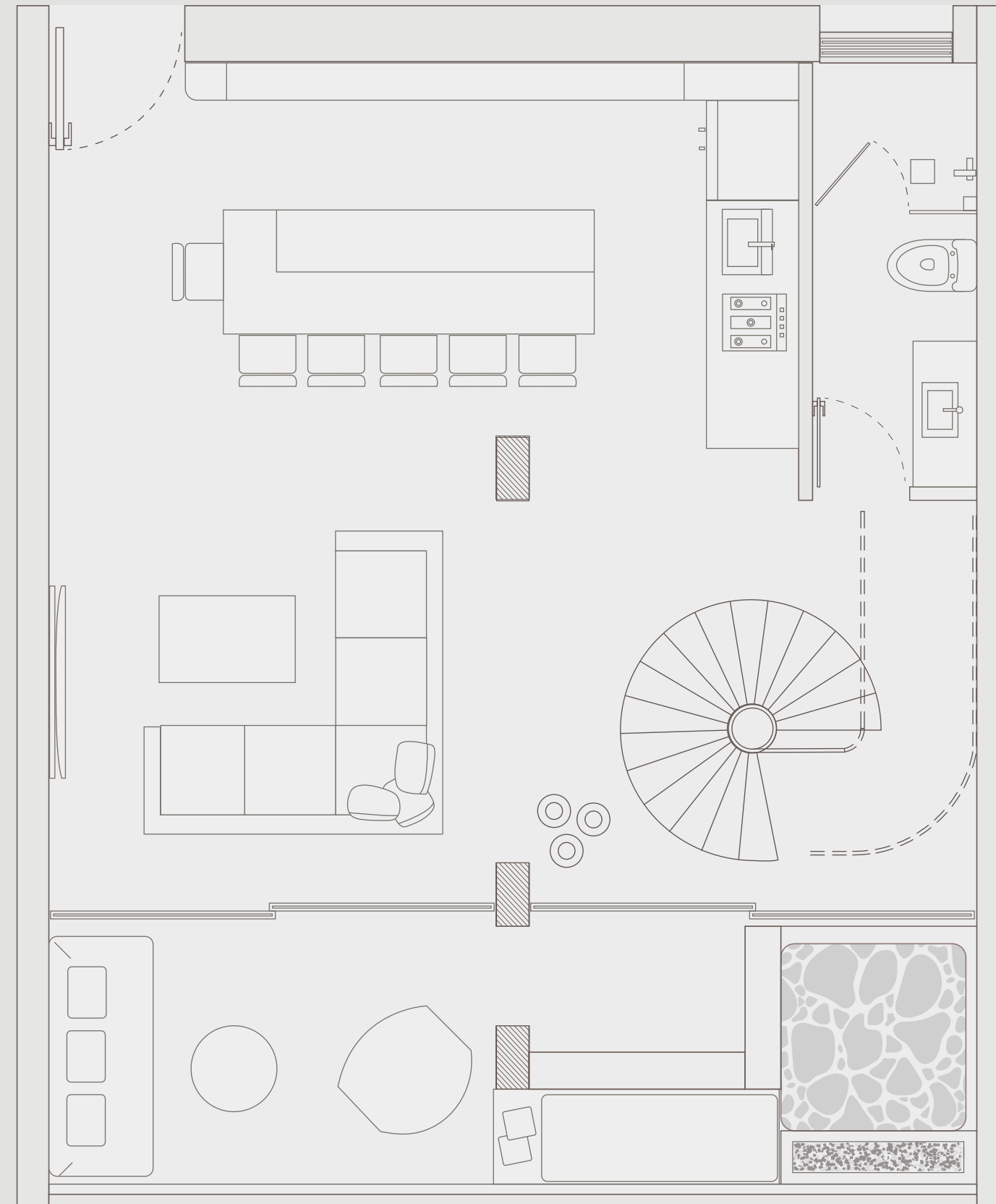
Mezzanine with bedroom  
and full bathroom





Surface

-  Interior  
629.15 ft<sup>2</sup>
-  Balcony  
202.90 ft<sup>2</sup>
-  Mezzanine  
340.03 ft<sup>2</sup>
-  Total Area  
1172.08 ft<sup>2</sup>



Areas

---

Living Room

---



---

Kitchen / Dining Room

---



---

Balcony with Plunge Pool

---



---

Full Bathroom on Ground floor

---



---

Mezzanine with bedroom  
and full bathroom.

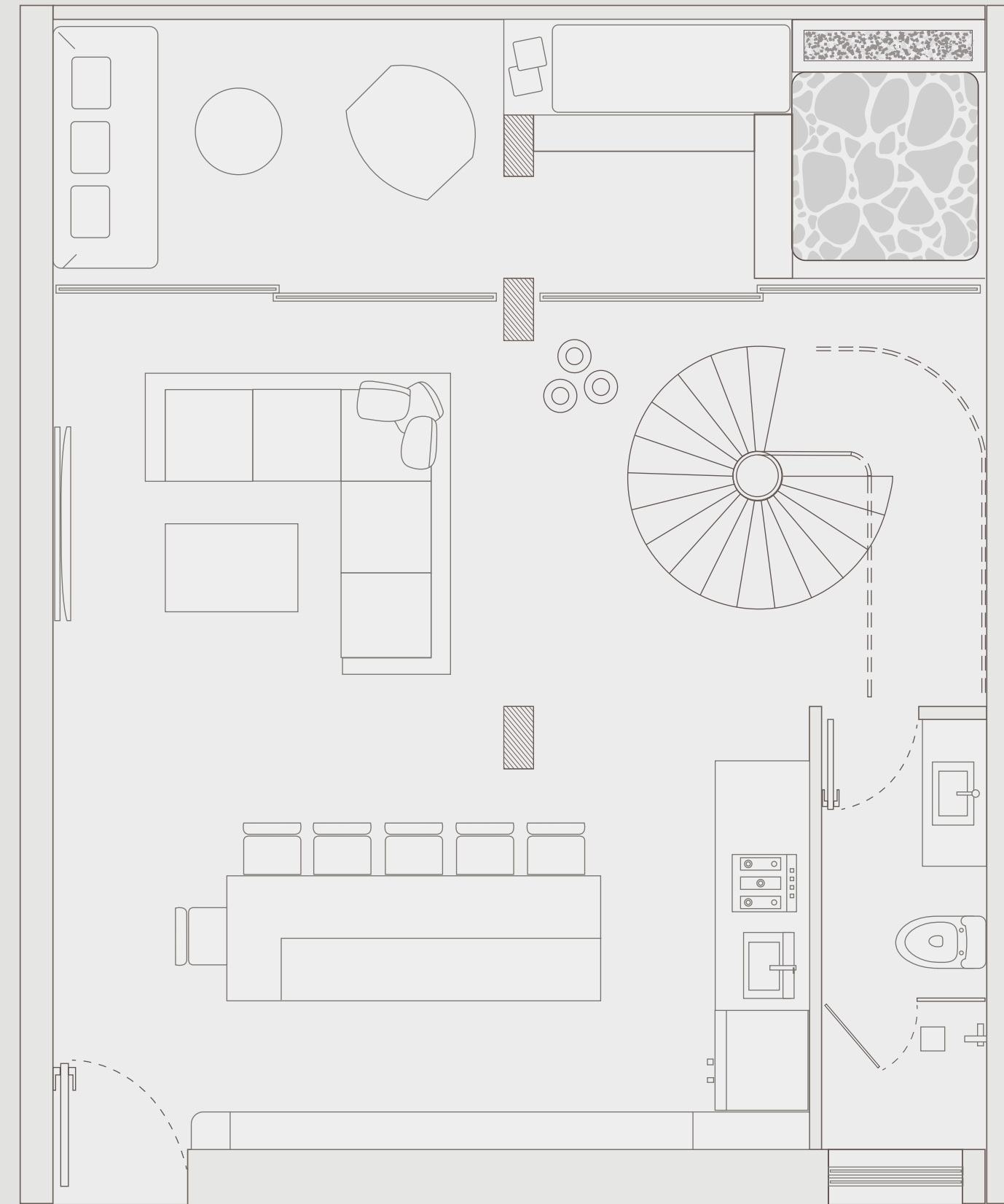
---





Surface

- Interior  
629.15 ft<sup>2</sup>
- Balcony  
202.90 ft<sup>2</sup>
- Mezzanine  
340.03t ft<sup>2</sup>
- Total Area  
1172.08 ft<sup>2</sup>



Areas

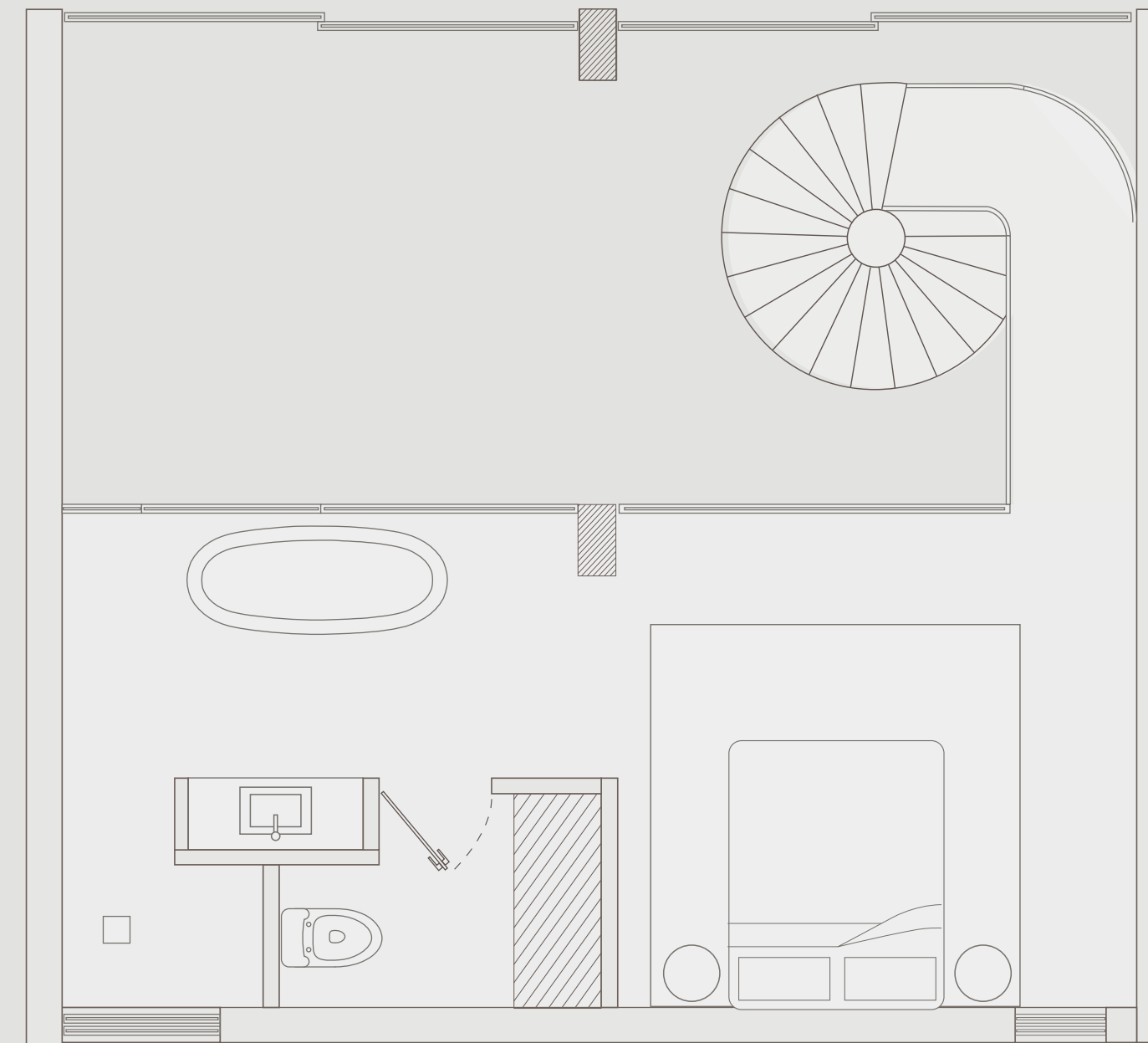
Living Room

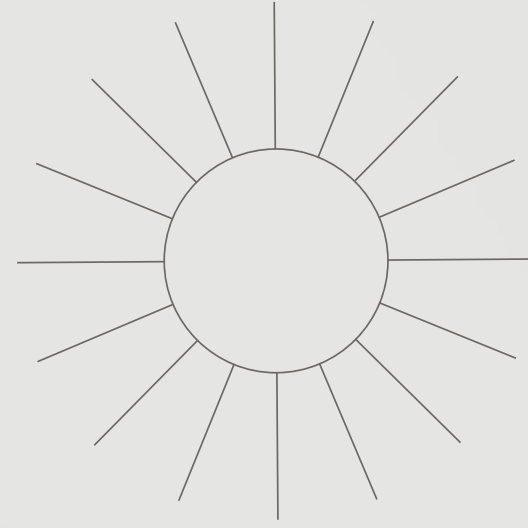
Kitchen / Dining room

Balcony with Plunge Pool

Full Bathroom on Ground Floor

Mezzanine with bedroom  
and full bathroom





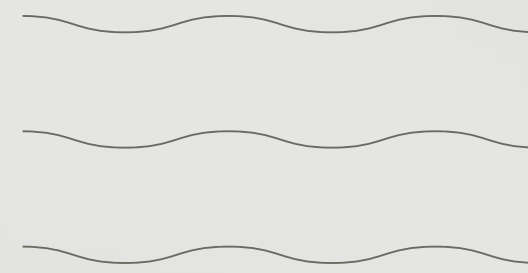
MONA VIE



## *Rooftop*

*Your paradise to another level*

Enjoy the incredible rooftop with sun deck and cabanas. Enjoy the view, plan a pool with your friends, share with them in the bar area or just relax in the Conversation Pit. At MonaVie, paradise is an integral part of your daily life.



*BOUTIQUE LIVING*



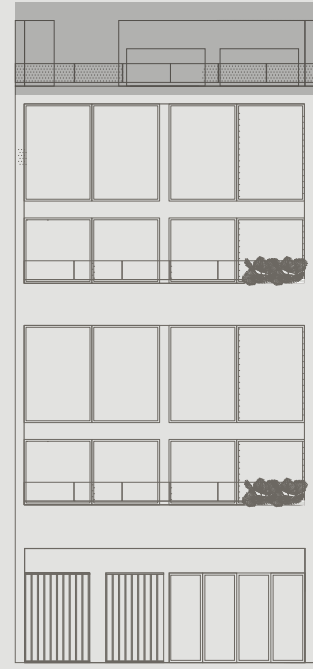
ROOFTOP



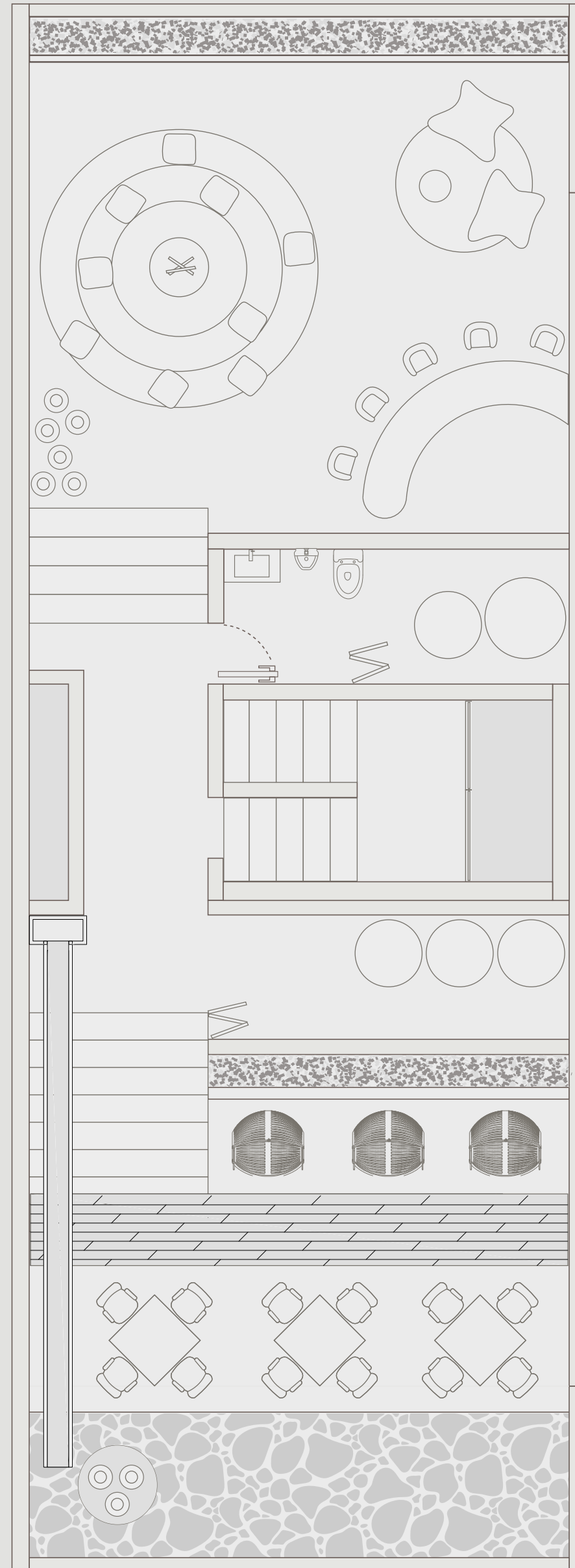
ROOFTOP

MONAVIE

Rooftop



TULUM /



*Areas*

Water mirror and swings

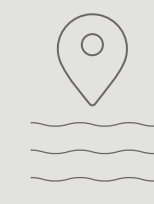
Bar

Conversation Pit

Restrooms

ROOFTOP

MONA VIE



The privileged location within Aldea Zama makes any distance a short walk or bike ride away.

|                     | Bicycle | Car    |
|---------------------|---------|--------|
| Archaeological Zone | 18 min  | 16 min |
| Playa Paraíso       | 15 min  | 9 min  |
| Hotel Zone          | 11 min  | 6 min  |
| Downtown Tulum      | 7 min   | 7 min  |

74 miles away from Cancun International Airport and 41 miles away from Playa del Carmen

TULUM /

LOCATION

MONAVIE

Don't think twice  
*and live Tulum your style*

BOUTIQUE LIVING