



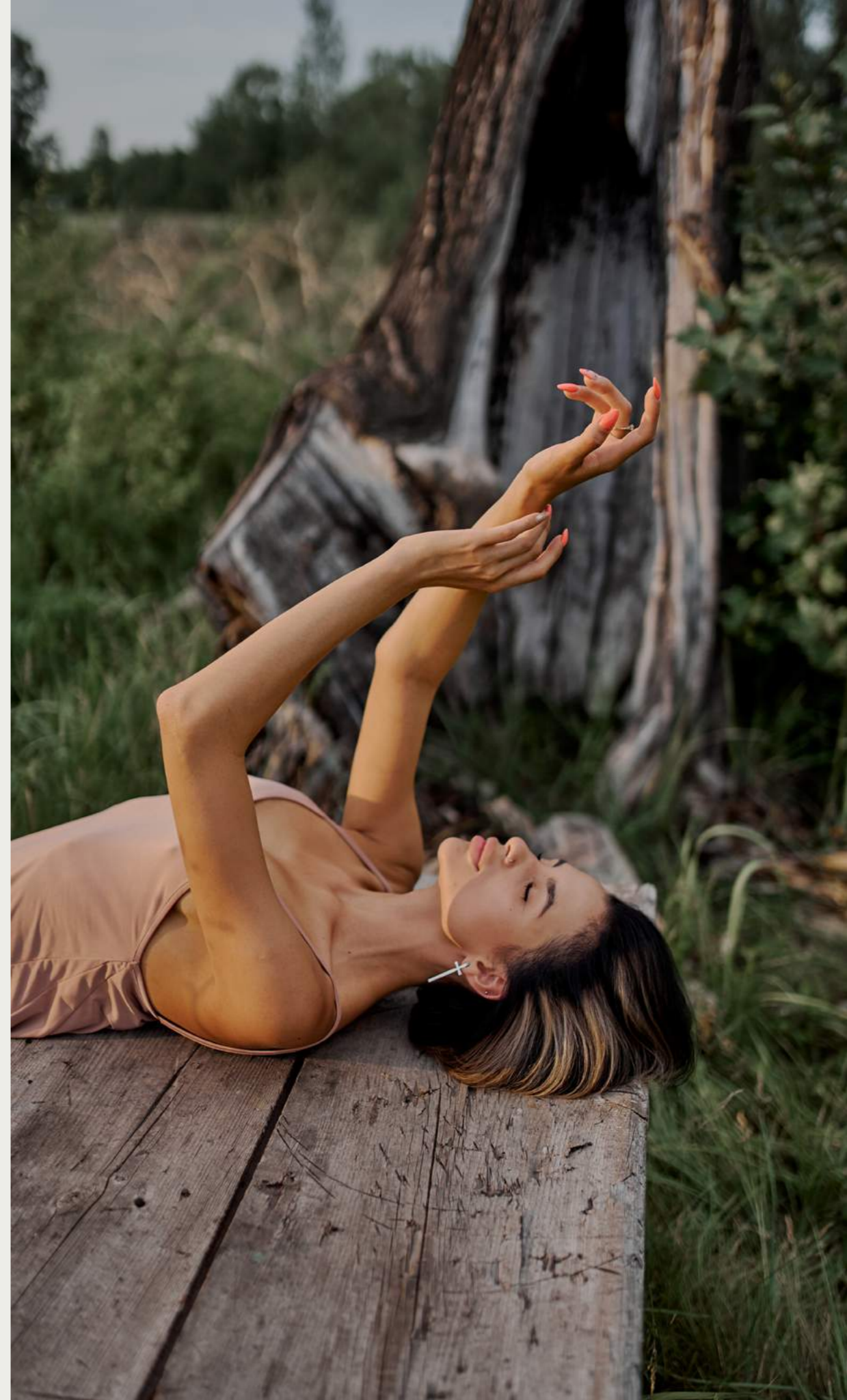
WAYE

PRESENT LIVING

WHY WAYE'?

Waye' is your connection to the present, the place where your five senses balance your interior. It is your center, the coordinate to reach yourself with a pulse that melts into your essence. There is no other time, there is no other existence. It is here and now.

The Mayan culture understood this well and recognizes the importance of their language, using the word “waye” to refer to “here”, the only place that allows you experience full consciousness by merging with the present.



WHAT IS WAYE'?

Waye' is a 40,364 sqft complex based on a mindfulness concept. It consists of 60 units with 12 studios, 24 one-bedroom and 24 two-bedroom apartments, distributed in 4 four-story buildings.

It has common area amenities such as a lobby, reception, green areas, infinity pool, coworking area, family room, gym, trails and underground parking.

This Real Estate development, managed by the construction company DarKitectos, provides an investment opportunity with excellent returns compared to other similar projects and a great value for money ratio with finishes and spaces superior to close competitors.



WHY TULUM?

Tulum is one of the most attractive emerging destinations in Mexico. It has become the epicenter of the Caribbean in recent years and has positioned itself as a premium place not only for a short stay, but also to stay indefinitely.



In itself, Tulum is a lifestyle, it has its own aesthetics and allows you to connect daily with nature and the latent ancestral spirit in every corner. Also with beings from all over the world who have made this destination their community and who have understood the opportunity to be part of something new that grows with more human criteria and without losing sight of profitability, you must take advantage of it to guarantee a future of well-being.

*Live it to the fullest at
Waye, Present Living*

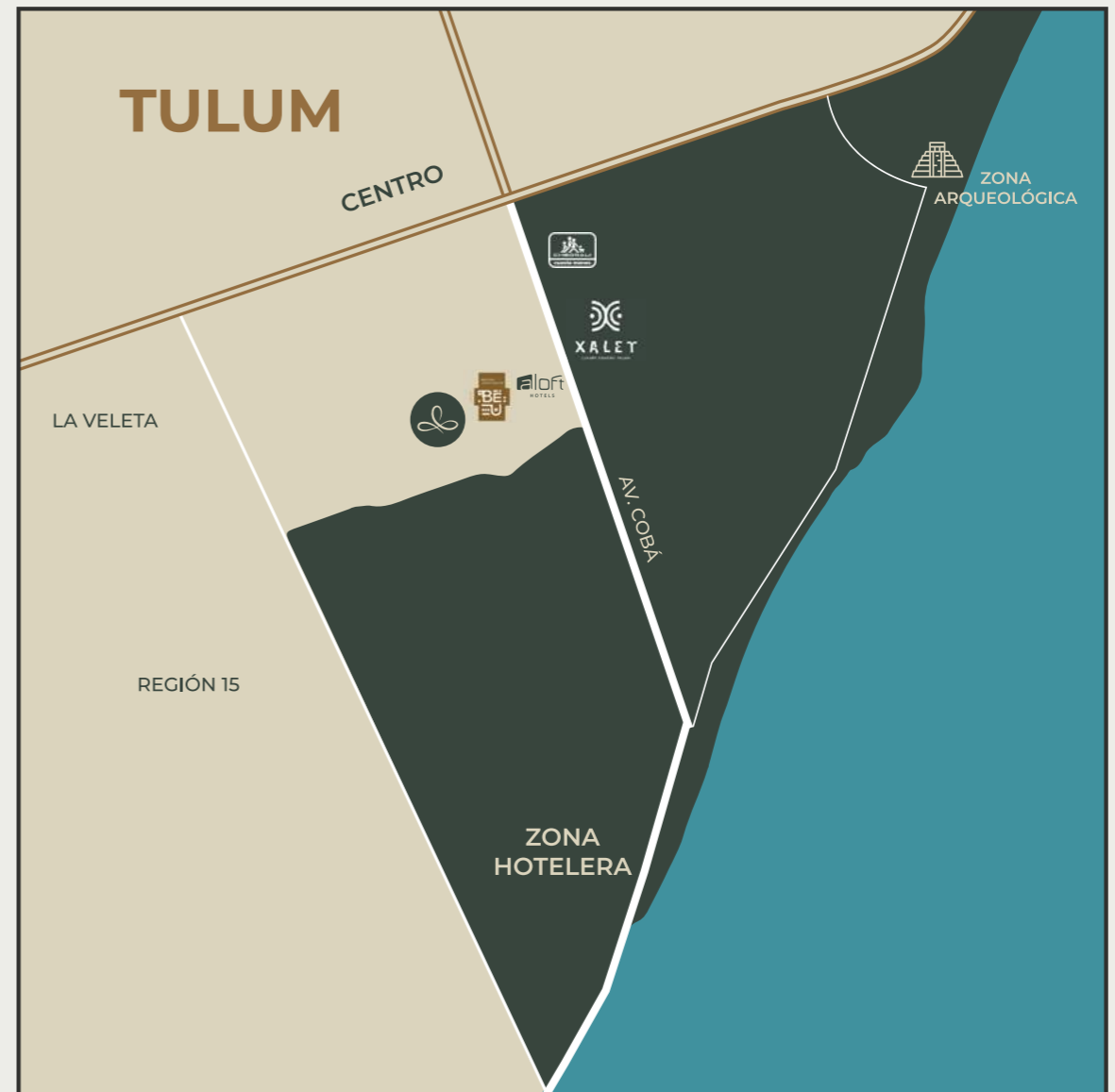


Ongoing megaprojects, such as the international airport and the Mayan train, point to broad connectivity and investment increases every year to consolidate balanced urban planning. Thus, we are talking about a destination that seduces both for its turquoise waters and the embrace of the jungle, as well as for the economic projection that every investor seeks.

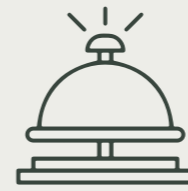
LOCATION

Waye' is located in Tulum District, the new commercial and gastronomic area of Tulum, a few steps from the active and strategic Cobá avenue that connects with the vibrant hotel zone and the federal highway.

SEE LOCATION



AMENITIES



RECEPTION



45% GREEN
AREAS



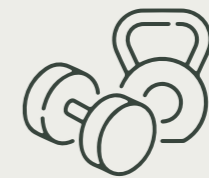
INFINITY
POOL



COWORKING
AREA



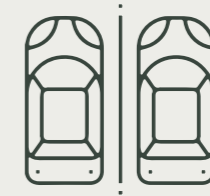
FAMILY
ROOM



GYM



WALKING
TRAILS



UNDERGROUND
PARKING



ESTUDIO

Interior: 365.97 sq ft
Terraza: 72.11 sq ft
Total: 438.09 sq ft

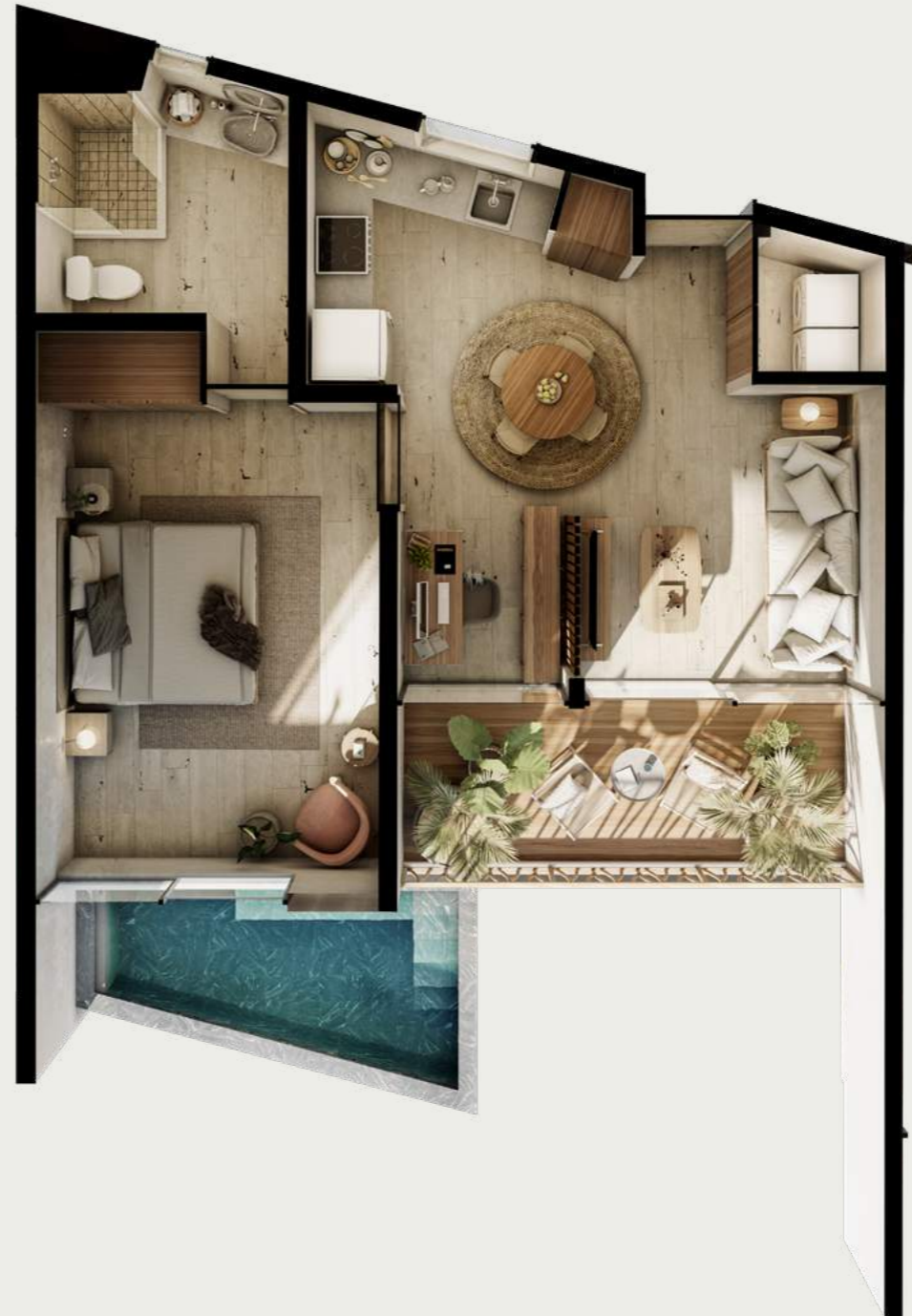






1 REC PB

Interior: 609.23 sq ft
Terrace: 104.40 sq ft
Jacuzzi: 94.72 sq ft
Total: 808.36 sq ft

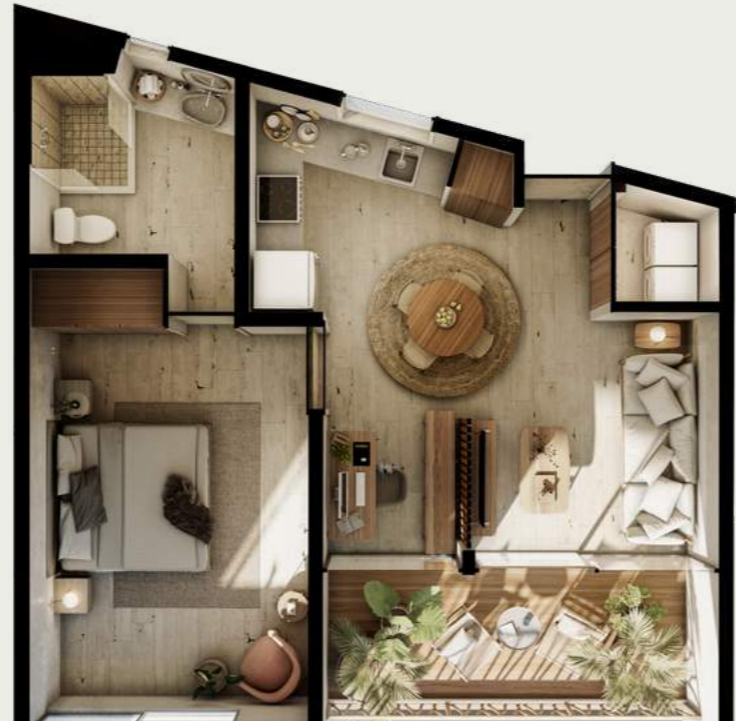






1 REC / ROOFTOP

Interior: 653.36 sq ft
Terraza: 104.40 sq ft
Jacuzzi: 74.271 sq ft
Solario: 224.96 sq ft
Total: 1,057.01 sq ft





2 REC

Interior: 925.69 sq ft
Terrace: 263.71 sq ft
Total: 1,189.41 sq ft









2 REC / ROOFTOP

Interior: 969.82 sq ft
Terraza: 263.71 sq ft
Jacuzzi: 74.27 sq ft
Solario: 242.18 sq ft
Total: 1,550.00 sq ft





