

PARAMAR
Black



The place where the exceptional becomes reality. **Paramar Black** is the brand's seventh development, which promises to be one of **Aldea Zama's** most exclusive and luxurious developments.

Let your senses take you on an unparalleled journey through its unique composition of elegance and nature.

PARAMAR
Black

LOCATION





AMENITIES

- 24 hrs security
- Main lobby
- Business center
- Sauna & Jacuzzi
- Spa with massage cabins
- Swimming pool for adults on rooftop
- Family pool on first floor
- Equipped gym with panoramic view
- Terraces, outdoor lounges, lounge chairs and green areas
- Sky Bar
- Elevator



GYM



LOBBY



TERRACE

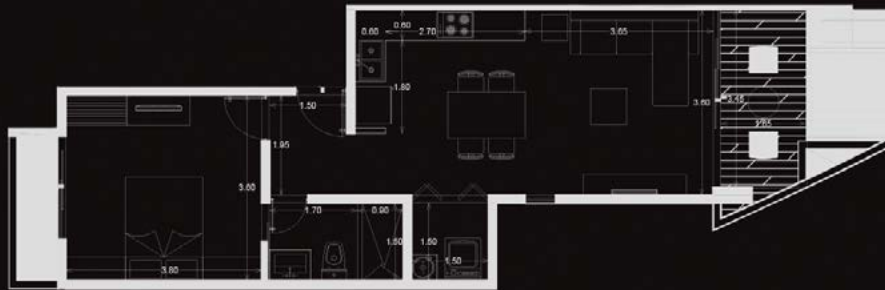


TYOLOGIES

The design in shades of black make a unique contrast with the natural materials that are integrated. The spaces are structured so that residents can experience the feeling of well being, having a spectacular view of the jungle.



1 Recámara Swim Up / 1 Bedroom Swim Up From 67.10 m² / 722.25 sqft



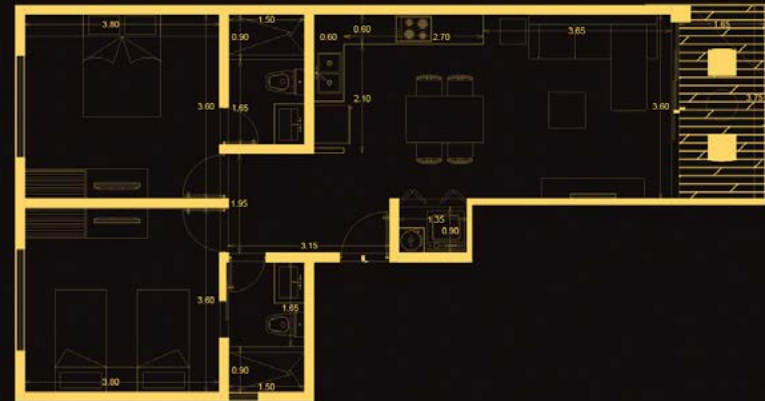
1 Recámara / 1 Bedroom From 60.23 m² / 723.26 sqft



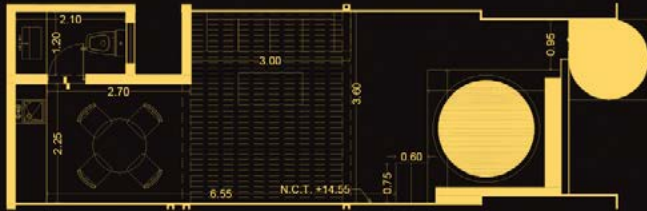
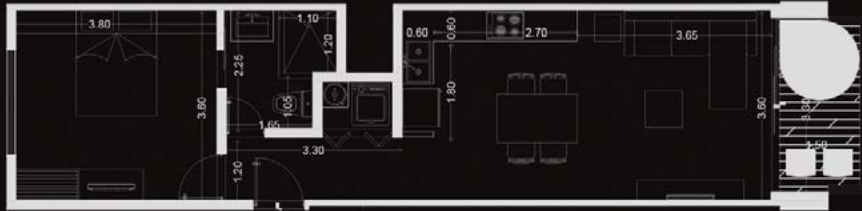
2 Recámaras Swim Up / 2 Bedrooms Swim Up From 80.79 m² / 869.61 sqft



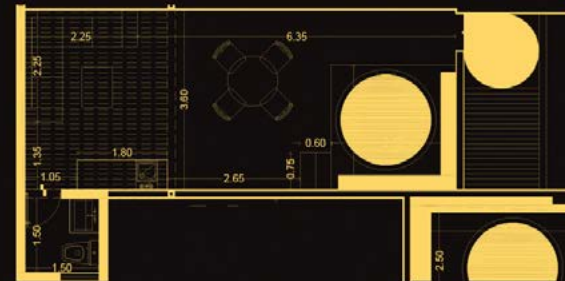
2 Recámaras / 2 Bedrooms From 79.67 m² / 869.62 sqft



1 Recámara Penthouse / 1 Bedroom Penthouse From 101.38m² / 1091.24 sqft



2 Recámaras Penthouse/ 2 Bedrooms Penthouse From 116.33 m² / 1252.18 sqft



2 Recámaras Penthouse/ 2 Bedrooms PenthouseFrom 116 mt² / 1252 sqft