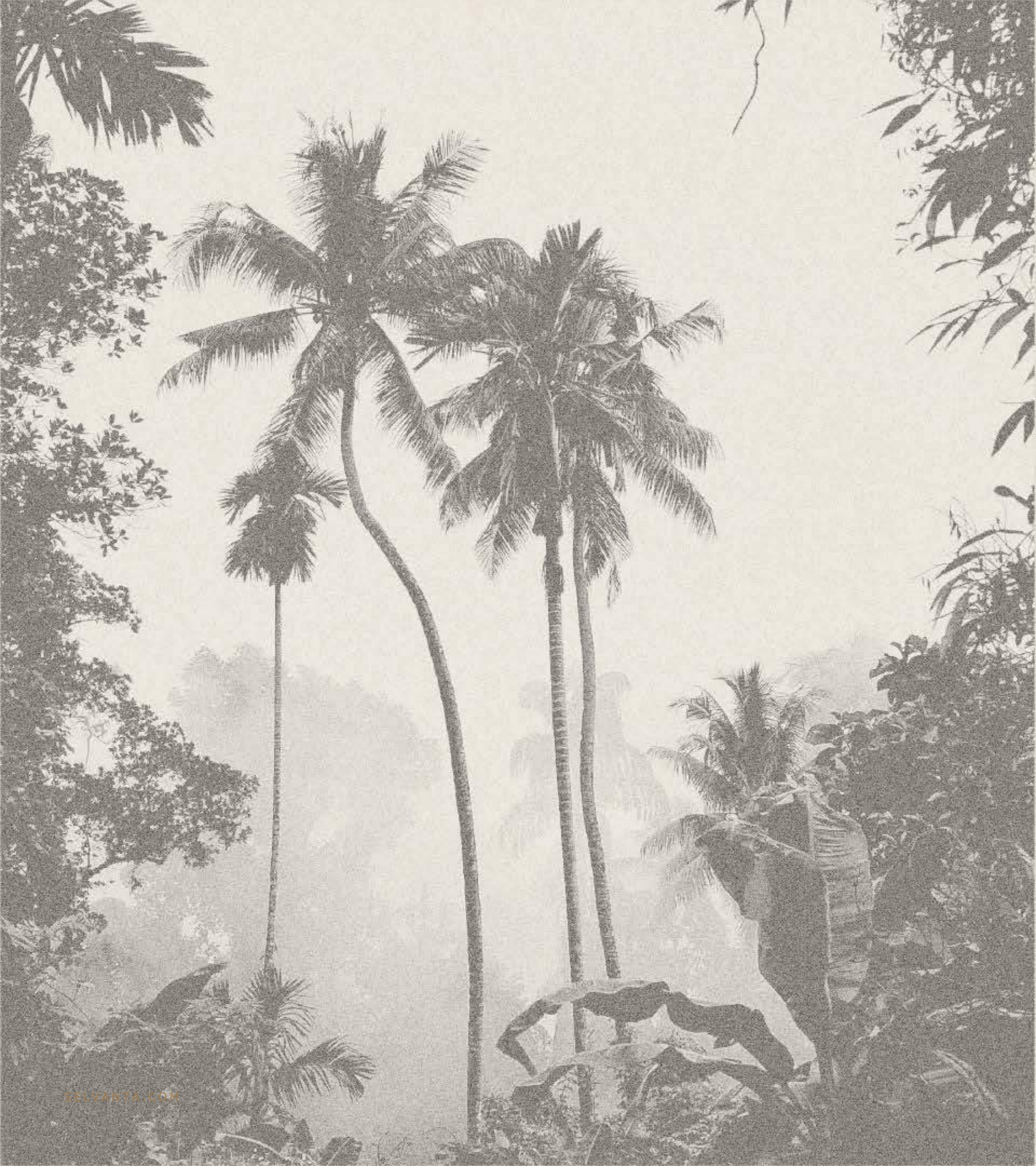




SELVANTA

ECO-MINDED COMMUNITY

TULUM



The first Eco-Minded community

Right in front of the Jaguar Park, a sanctuary for the conservation of natural wealth spanning nearly 300,000 hectares and located near the iconic archaeological zone, emerges Tulum's first environmentally conscious residential and mixed-use community: Selvanta.



Selvanta

It is a sophisticated natural sanctuary that has been passed down to us to put down roots and build a harmonious lifestyle around the conservation of nature.





Be eco-minded

Situated on a 21-hectare land with 5 open-air cenotes and amidst lush endemic vegetation, Selvanta emerges as a natural project committed to ecological sensitivity, aiming to minimize its carbon footprint.

It will promote the use of renewable energies and local consumption among residents and businesses established there, discouraging the use of cars within the complex, eliminating the use of plastics and waste, and fostering a culture of water conservation and the preservation of nature, Tulum's most cherished assets.





Location

Selvanta is located in a privileged and easily accessible area between the federal highway Chetumal-Cancún and Av. Costera, the two main access routes in Tulum, and less than 10 km from the future international airport.

Situated in an area of high value and residential vocation between the jungle and the sea, Selvanta offers convenient accessibility to the city of Tulum, as well as the main tourist attractions and destinations of the Riviera Maya





" One mile away from the Caribbean Sea and the Tulum Ruins."



*A place to become yourself
again.*





Selvanta is the gateway to a conscious luxury lifestyle that integrates the comforts of contemporary life while preserving the natural world as its centerpiece, where residents will create connections with each other and their environment. All within an environment of complete security that provides surveillance, controlled access, an electrified perimeter fence, and CCTV video surveillance.



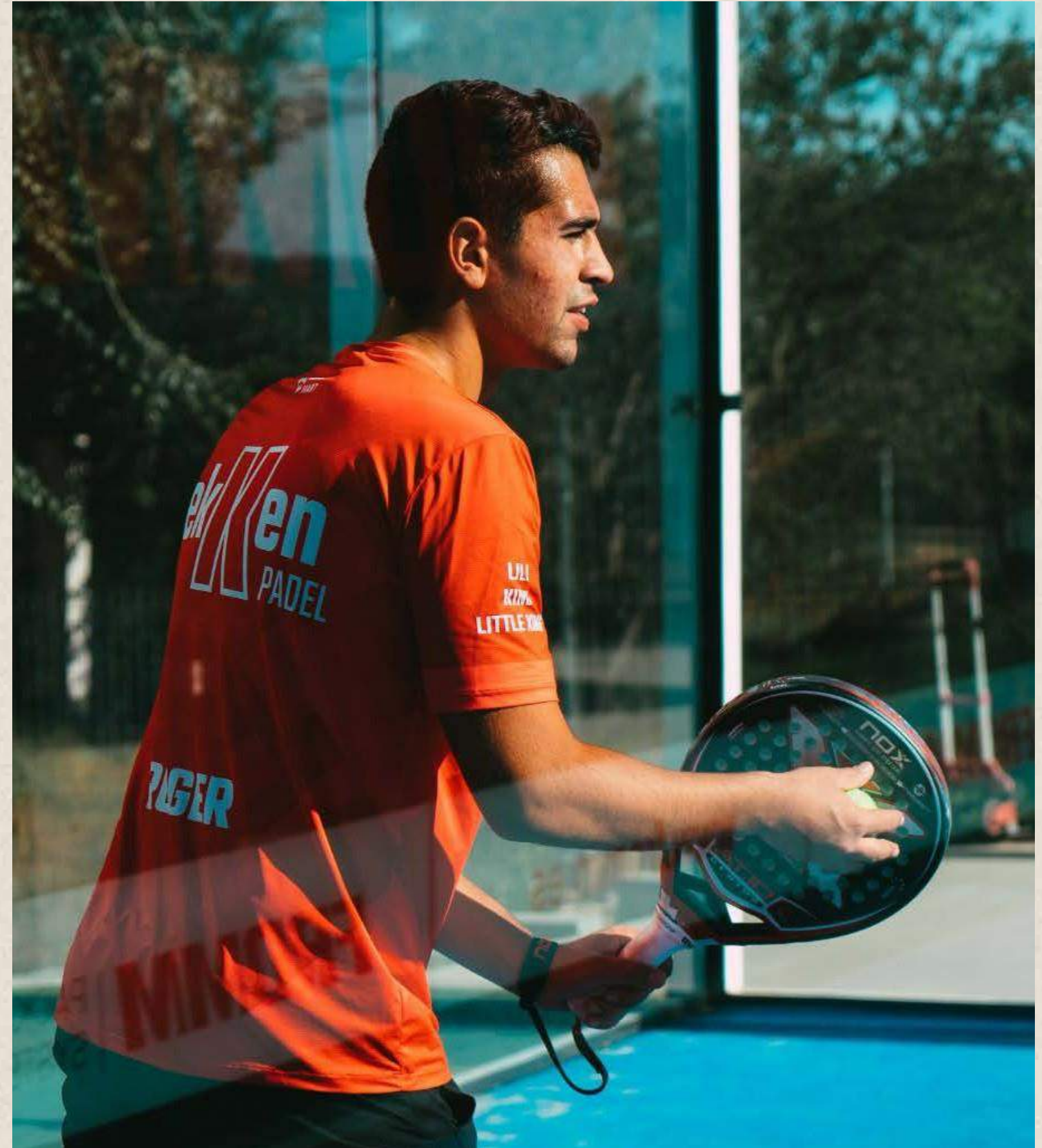


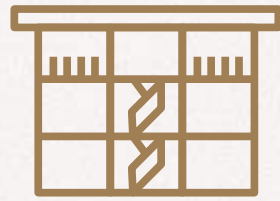
ECO-MINDED COMMUNITY TULUM



Amenities and services

The amenities that enhance the quality of life in Selvanta allow for a combination of active social and sports activities with those outdoors surrounded by pure nature. Here, every family member has their own space.





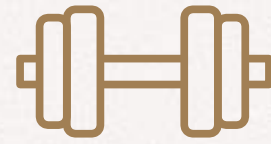
Comunity

- Clubhouse.
- Pool with hammock area and loungers.
- Multipurpose event room.
- Mini cinema.
- Business center.
- Amphitheater.
- Bridge.
- Pet park.



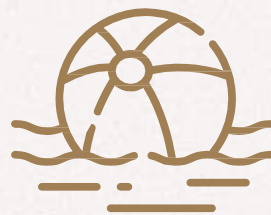
Yoga

- Yoga Palapa.
- Yoga deck with cenote view.
- Cenote for swimming.



Wellness

- Gymnasium.
- Swimming lane.
- Steam bath.
- Sauna.
- Hydrotherapy.
- Heated pool.
- Massage cabin.
- Contemplative gardens..



Klds

- Kids pool.
- Plounge pool .
- Kids playground.
- Lineal park .



Sports

- Padel courts.
- Pickleball court.
- Petanque track.
- Jogging circuit.
- Bike lane.



Área comercial

- Mini market .
- Coffee shop.
- Restaurant.
- Dry cleaning and laundry
- Pharmacy
- Office



Entertainment and leisure

- Grand Cenote navigable with contemplative and rest area.
- Exclusive restaurant for residents.
- Open kitchen.
- Cenote bar.
- Gardens and trails.
- Rest and contemplation stations.



HIDROMASAJE SELVANTA

ECO-MINDED COMMUNITY TULUM



S

Plan maestro

Comunidad

- A.1 · Club house
- A.2 · pool with hammoc área

- A.3 · Multi purpose.
- A.4 · Mini cinema .
- A.5 · Business center
- A.6 · Anphitheatre
- A.7 · Bridge
- A.8 · Pet park

Yoga

- B.1 · Yoga palapa.
- B.2 · Yoga deck with cenote view.
- B.3 · Swimming Cenote.

Wellness

- C.1 .Gym
- C.2 · Swim lane .
- C.3 · Steam bath .
- C.4 · Sauna.
- C.5 · Hidrotherapy.
- C.6 · Climatized pool.
- C.7 · Massage cabin.
- C.8 · Contemplation gardens .

Kids

- D.1 .Kids pool
- D.2 · Plounge pool .
- D.3 · Playground.
- D.4 · Linieal park

Deportes

- E.1 · Paddle court.
- E.2 · Pickleball court.
- E.3 · Petanca. court
- E.4 · Jogging circuit .
- E.5 · Bike path.

Área comercial

- F.1 · Mini market.
- F.2 · Coffee shop.
- F.3 · Restaurant.
- F.4 · Dry cleaning and laundry.
- F.5 · Pharmacy
- F.6 · Offices

Entertainment and leisure

- G.1 · Grand Cenote navigable with contemplative and rest area.
- G.2 · Restaurant for residents
- G.3 · Open kitchen.
- G.4 · Cenote bar
- G.5 · Gardens and trails.
- G.6 · Rest and contemplation stations

- Residential lots
- Condominium lots
- Comercial area



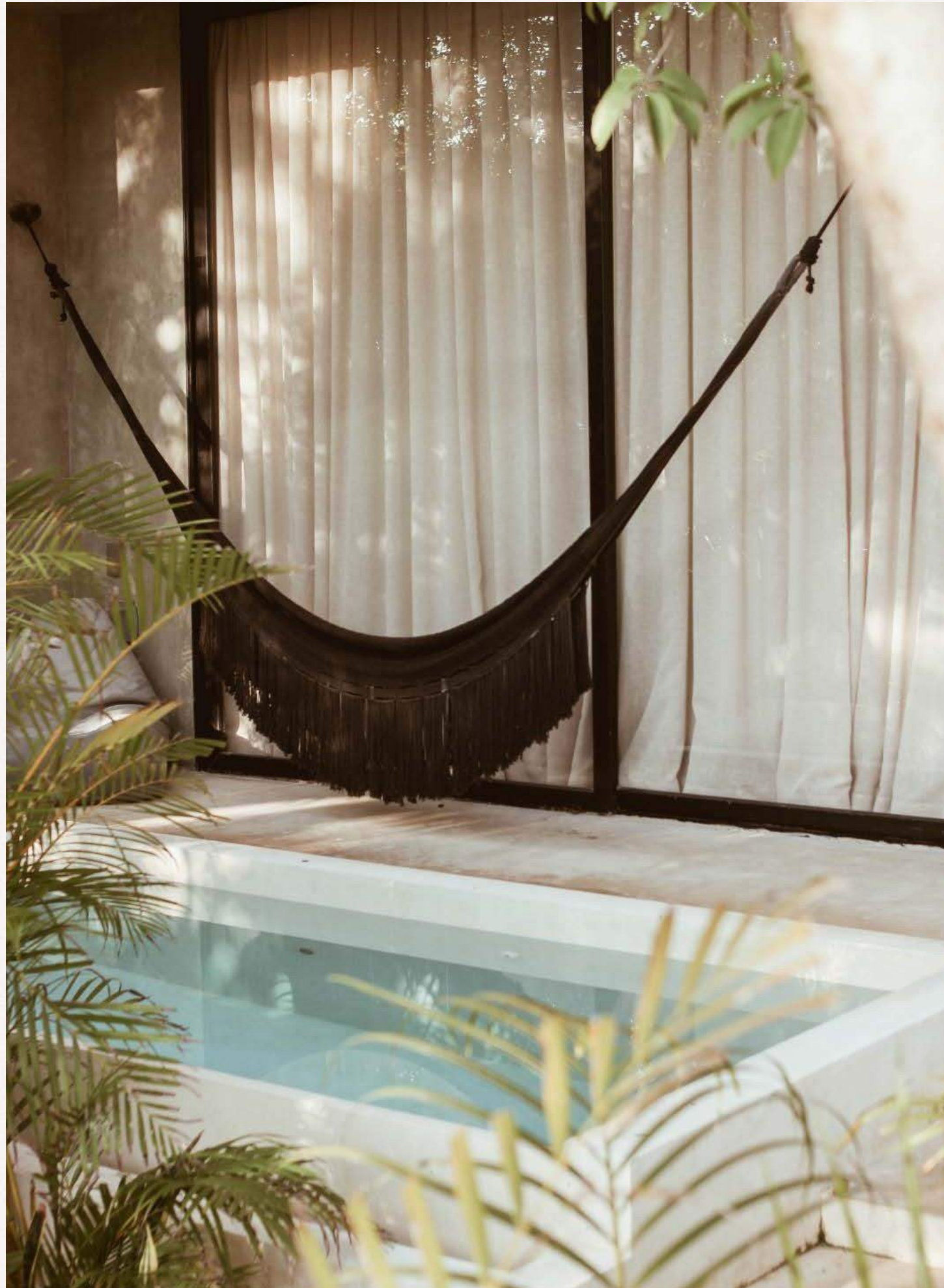
SELVANTA

ECO-MINDED COMMUNITY
TULUM





*Live, work or invest in
Selvanta, the new
destination in the Mayan
jungle...*



Live Residential lots

Acquiring a residential plot within the private residential communities of Selvanta is to build an exclusive lifestyle that has everything at your fingertips. It is to live surrounded by what we love most in an atmosphere of serene tranquility and embraced by nature

- **2 Closed gated residential communities.**
- **Controlled Access in each cluster.**
- **113 residential lots.**
- **Lots from 268m² to 900m². Available for you to build your dream house in Paradise.**



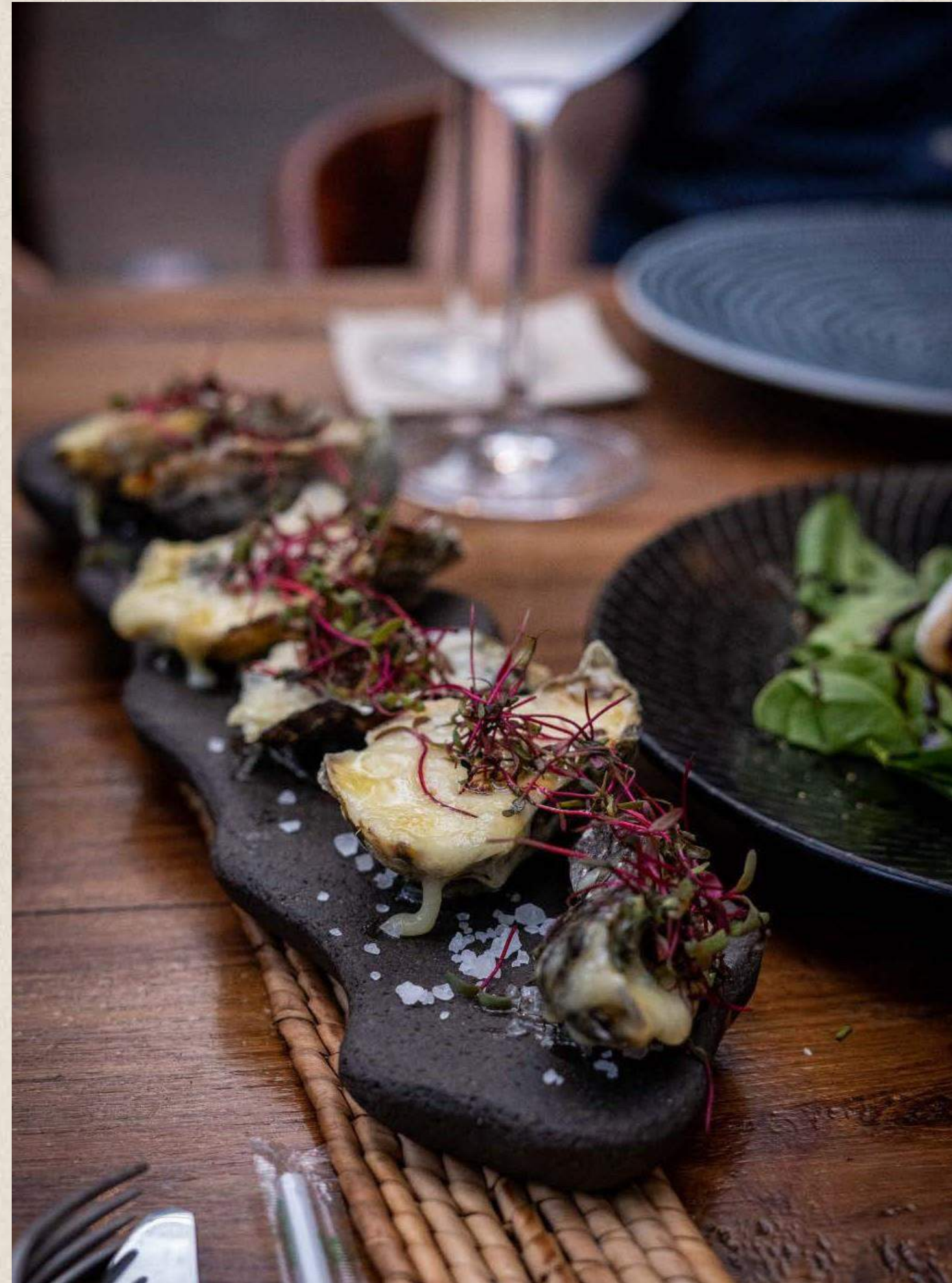
Invest

Tulum is one of the main destinations to invest in Mexico. The dynamism of its growth, its quality of life, and its exclusive tourism generate highly attractive levels of appreciation and investment returns from any perspective. Appreciation, investment returns, exclusive tourism, quality of life, among others, are some of the elements that make it attractive to invest from a business perspective or for an individual.

Macro lots from 31,468 m² to 22,800 m²

Ideal for developing:

- Hotels • Condos • Glamping • Resorts • Gym •
- Spas • Sport Academy • Dry Marina • Coworking •





Work

The commercial and service area of Selvanta will be the obligatory meeting point in a rapidly growing residential area, just like the needs of its residents. Its strategic location makes it a mandatory stopping point, thanks to its connectivity as well.

- **Comercial Lots.**
- **Offices.**
- **Doctor's offices.**



PLAZA SELVANTA

KELMAN

GYPSEA MARKET





TOO NO CEN



SELVANTA

ECO-MINDED COMMUNITY

TULUM



ItAldo