



JOIA

LUXURY CONDOS

Where Luxury Meets Paradise



JOIA is a boutique condo development thoughtfully designed to provide a modern and comfortable living experience to residents and guests.

This luxurious boutique building will consist of **32** UNITS distributed over **4** STOREYS

 Located in Aldea Zama, just minutes away from the beautiful beaches of Tulum.

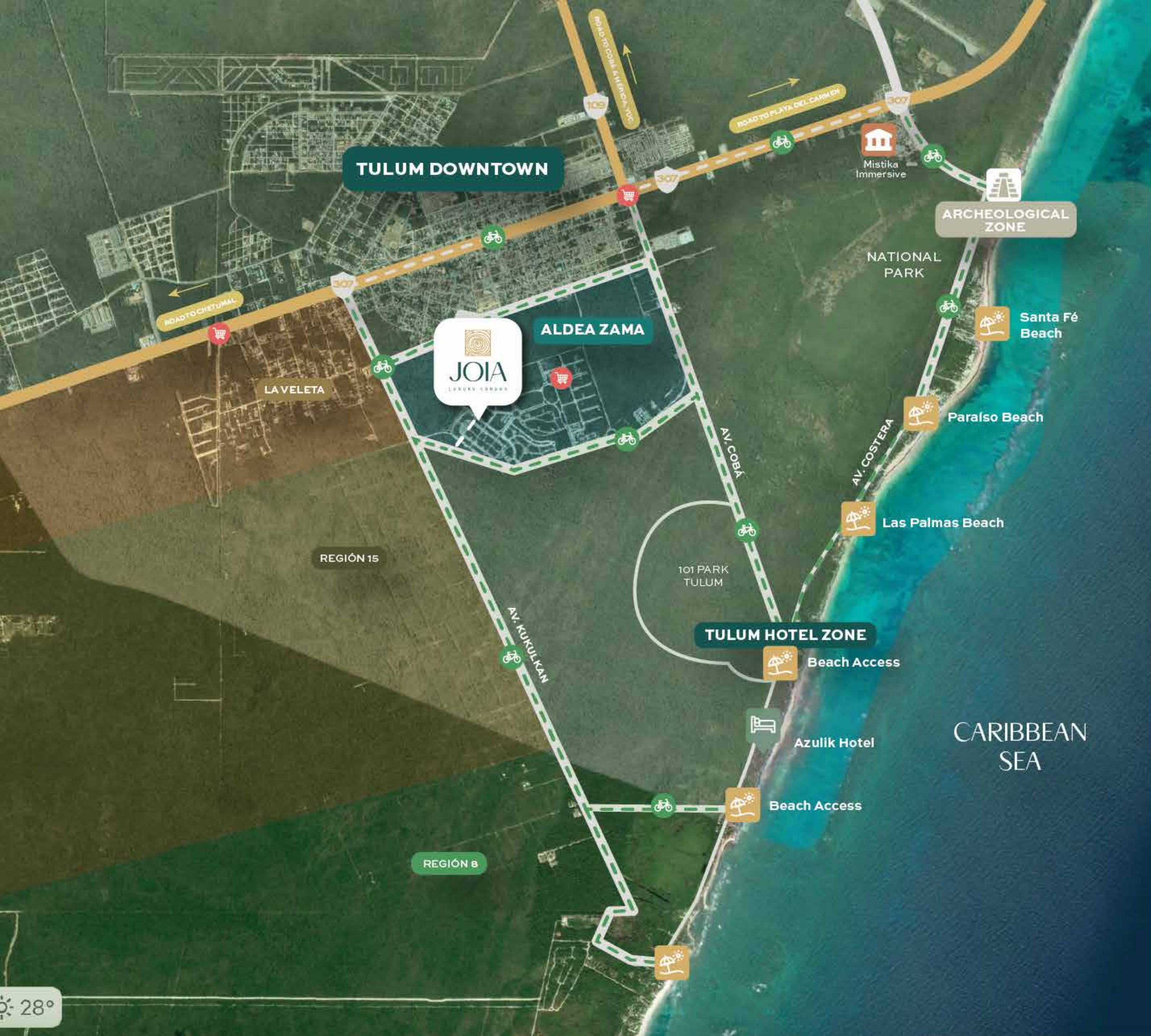
2



LUXURY CONDOS

JOIA

ILLUSTRATIVE IMAGE. DOES NOT CONSTITUTE AN ACCURATE REPRESENTATION OF REALITY.



Location



JOIA is located in Aldea Zama, one of the trendiest and fastest growing areas of Tulum, with easy access to everything that the Riviera Maya has to offer.

The development is conveniently located within walking distance to yoga studios, shops, trendy bars and restaurants.

The bustling hotel zone and beach clubs are just a few minutes away.



Tulum, Quintana Roo, Mexico

Tulum is a breathtaking destination located in the Mayan Riviera, Mexico. It's the perfect place for tourists seeking an authentic and immersive experience.

The lush green jungle, pristine beaches, and crystal-clear waters provide an idyllic backdrop for relaxation and adventure alike.

This eco-friendly community offers a wide range of activities such as hiking, cycling, snorkeling, and wellness activities.

Visitors can also indulge in the rich cultural heritage of the region, with opportunities to explore Mayan ruins, visit local markets, and savor delicious cuisine.

With its natural beauty, cultural richness, trendy restaurants and luxurious beach clubs, Tulum is a must visit destination for anyone seeking an unforgettable experience in Mexico.



Where Luxury Meets Paradise



LUXURY CONDOS

ILLUSTRATIVE IMAGE. DOES NOT CONSTITUTE AN ACCURATE REPRESENTATION OF REALITY

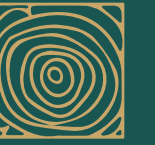
JOIA







Typologies

JOIA



Balcony Studio

 Interior: 398.3 sq ft (37m²)
 Balcony: 64.6 sq ft (6m²)
Total: 462.9 sq ft (43m²)



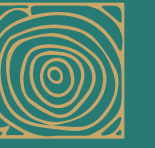
- 1** Bedroom and living room
- 2** Kitchen
- 3** Study
- 4** Bathroom
- 5** Washer/Dryer and Wardrobe
- 6** Balcony



ILLUSTRATIVE IMAGE. DOES NOT CONSTITUTE AN ACCURATE REPRESENTATION OF REALITY




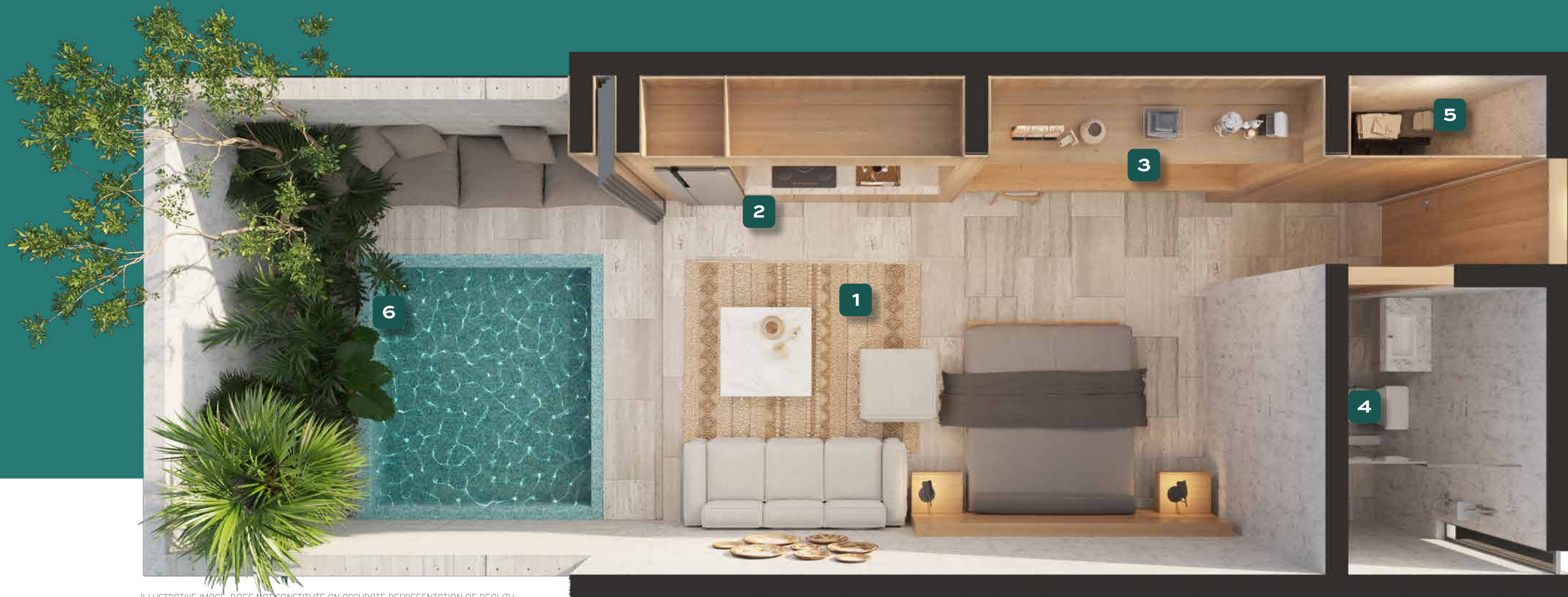
Where luxury
and jungle
meet.

Garden Suite Swim-up



 Interior: 398.3 sq ft (37m²)
 Covered terrace: 64.6 sq ft (6m²)

 Terrace / garden: 147.5 sq ft (13.7m²)
Total: 610.4 sq ft (56.7m²)



ILLUSTRATIVE IMAGE. DOES NOT CONSTITUTE AN ACCURATE REPRESENTATION OF REALITY



1 Bedroom and living room
2 Study

3 Dining area and coffee station
4 Bathroom

5 Washer/Dryer and Wardrobe
6 Pool Area

ILLUSTRATIVE IMAGE. DOES NOT CONSTITUTE AN ACCURATE REPRESENTATION OF REALITY

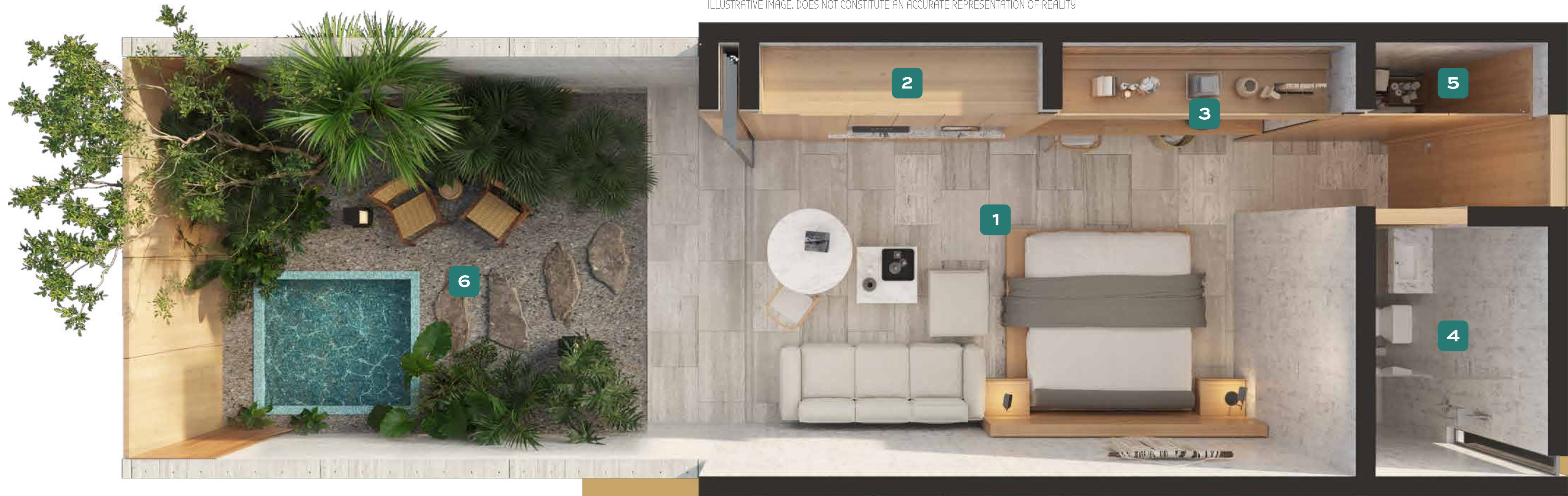





JOIA
LUXURY CONDOS

Garden House Plunge Pool



ILLUSTRATIVE IMAGE. DOES NOT CONSTITUTE AN ACCURATE REPRESENTATION OF REALITY



 Interior: 398.3 sq ft (37m²)
 Covered terrace: 64.6 sq ft (6m²)
 Terrace / garden: 239 sq ft (22.2m²)
Total: 701.9 sq ft (65.2m²)

1 Bedroom and livingroom
2 Kitchen

3 Dining area and coffee station
4 Bathroom

5 Washer/Dryer and Wardrobe
6 Plunge pool & garden

LUXURY CONDOS

11



JOIA



L U X U R Y C O N D O S



2 Bedroom Penthouse lock off

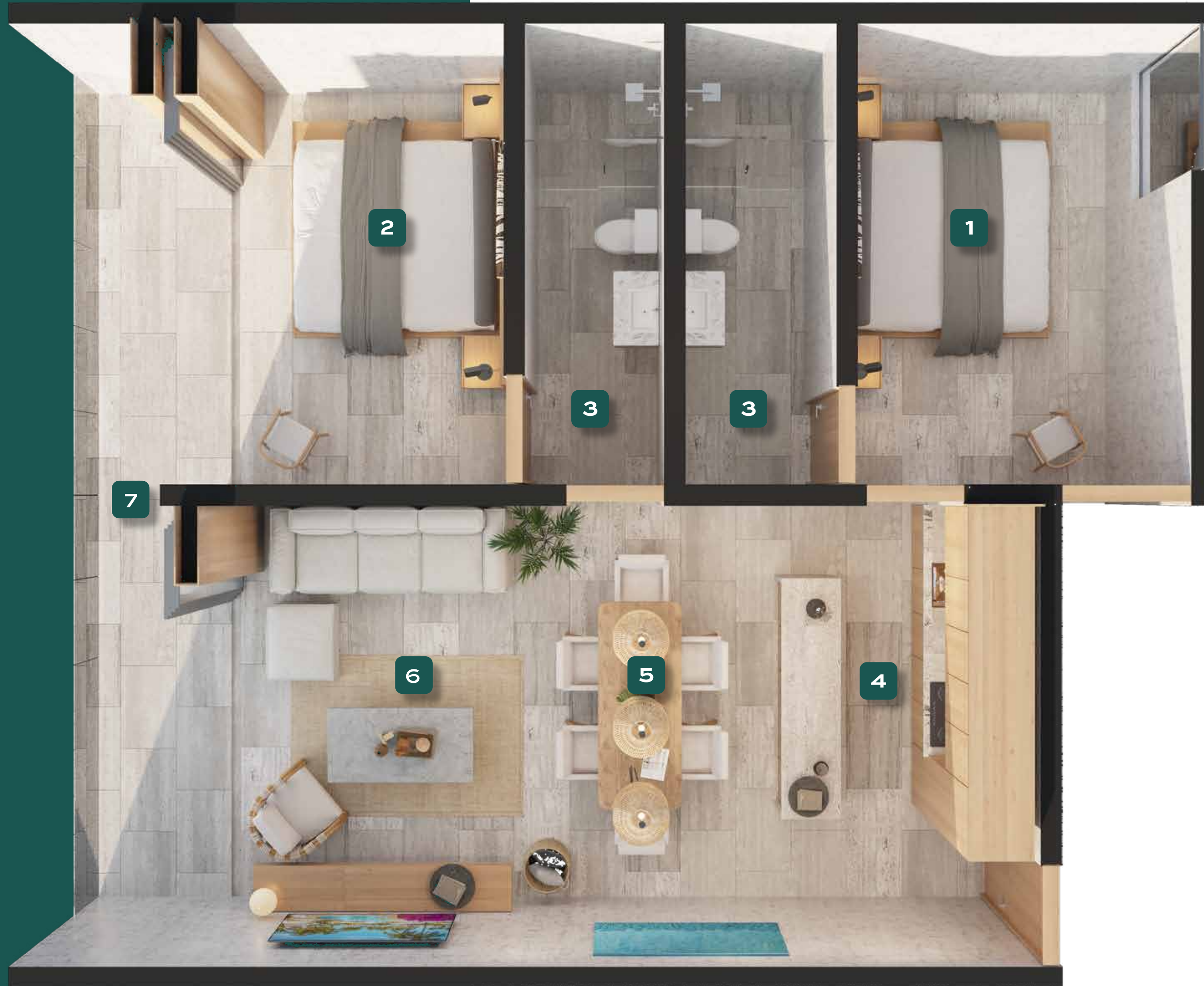
 Interior: 861.1 sq ft (80m²)

 Balcony: 134.5 sq ft (12.5m²)

Total: 995.6 sq ft (92.5m²)



- 1** Bedroom with private bathroom
- 2** Bedroom with private bathroom
- 3** 2 Bathroom
- 4** Kitchen with island
- 5** Dining room
- 6** Living room
- 7** Balcony



ILLUSTRATIVE IMAGE. DOES NOT CONSTITUTE AN ACCURATE REPRESENTATION OF REALITY

ILLUSTRATIVE IMAGE, DOES NOT CONSTITUTE AN ACCURATE REPRESENTATION OF REALITY



JOIA

LUXURY CONDOS

LOBBY



Amenities



INFINITY
POOL



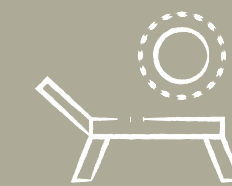
SAUNA



GYM



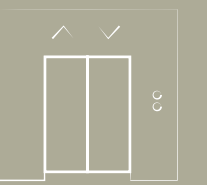
BBQ
AREA



SUN
BEDS



YOGA



ELEVATOR

JOIA

INFINITY POOL



LUXURY CONDOS

Experience pure serenity on the rooftop deck, lounge and SAUNA. Place to melt away stress and rejuvenate your body and mind. Soak up breathtaking views in the infinity pool, and stay active in our fully-equipped gym.

JOIA

BBQ
AREA



LUXURY CONDOS

JOIA

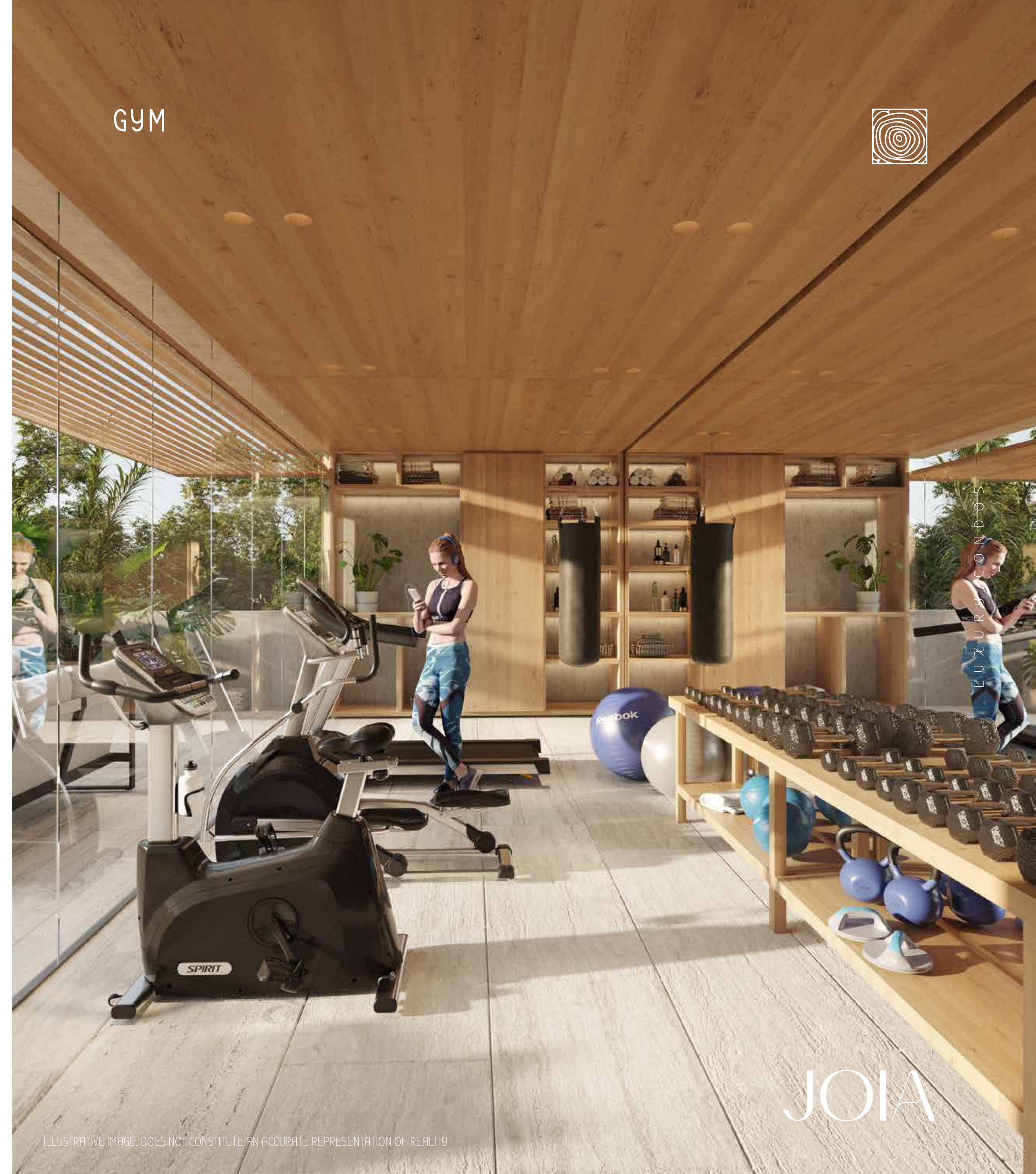
ILLUSTRATIVE IMAGE. DOES NOT CONSTITUTE AN ACCURATE REPRESENTATION OF REALITY

SAUNA



ILLUSTRATIVE IMAGE. DOES NOT CONSTITUTE AN ACCURATE REPRESENTATION OF REALITY

GYM



LUXURY CONDOS

JOIA

ILLUSTRATIVE IMAGE. DOES NOT CONSTITUTE AN ACCURATE REPRESENTATION OF REALITY



Master Plan

LUXURY CONDOS

JOIA

Ground Floor



LUXURY CONDOS

20

JOIA

First Floor



LUXURY CONDOS

21

JOIA

Second Floor



LUXURY CONDOS

22

JOIA

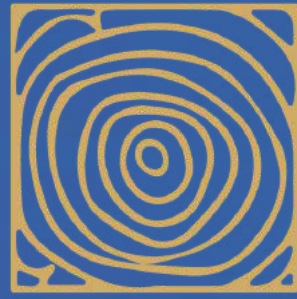
Roof
Top



LUXURY CONDOS

23

JOIA



Why invest in Tulum?



Booming Real Estate Market



Favourable Investment climate that support foreign investment.



Infrastructure development in progress: New Airport, Highways & Tren Maya



Growing Tourism Industry



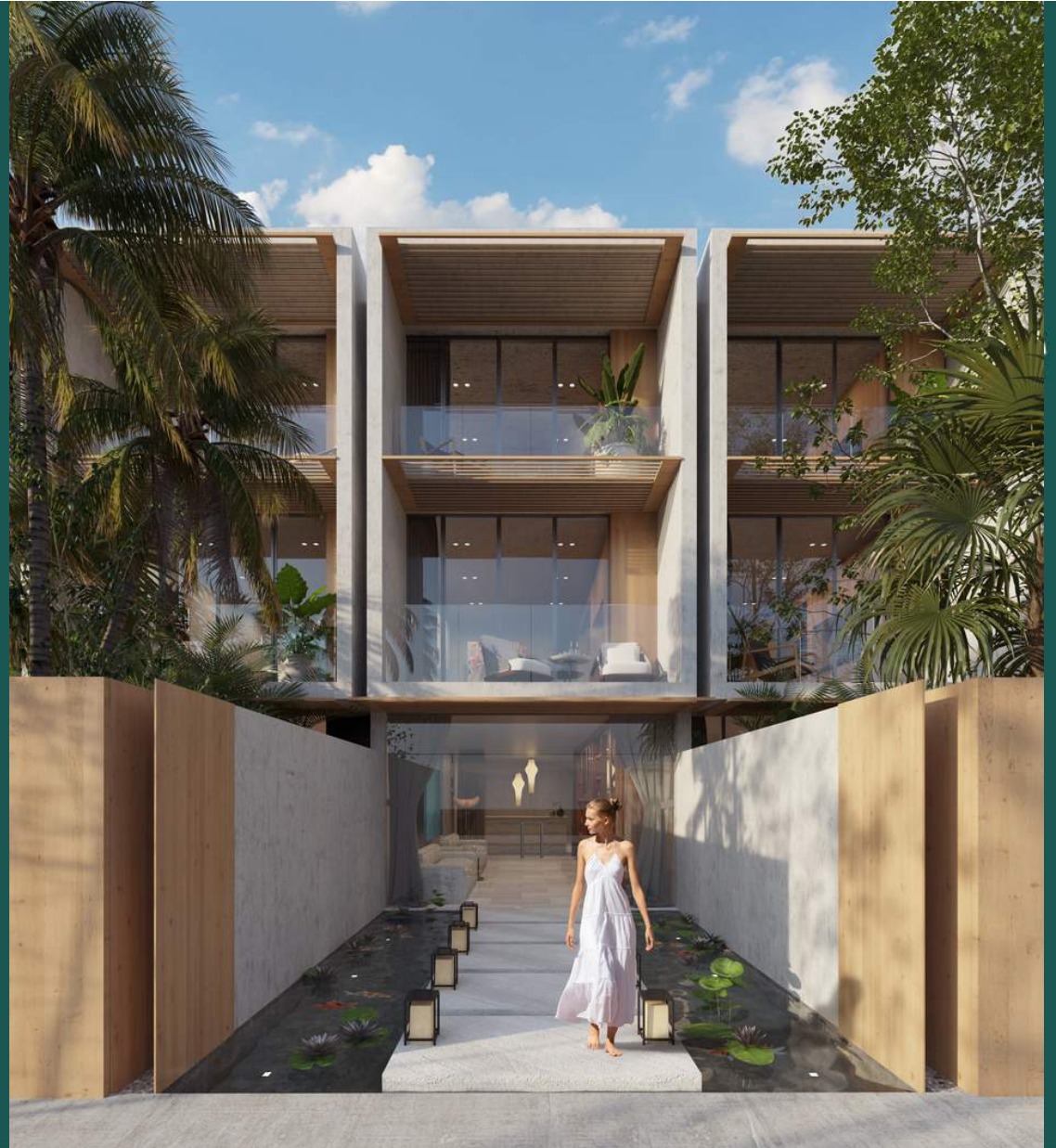
Rich cultural heritage and natural beauty





JOIA

LUXURY CONDOS



INTEGRA
360[®] REAL ESTATE
GROUP