



# PUNTA LAGUNA

LUXURY APARTMENTS

---

CORASOL, RIVIERA MAYA

An aerial photograph of a luxury resort on the Riviera Maya. The image shows a large, curved swimming pool in the foreground, surrounded by a sandy beach and a paved walkway. A road with palm trees leads from the pool area through a dense tropical forest towards a golf course. The golf course features several green fairways, sand traps, and a large blue lake. In the background, a building is visible amidst the trees, and the ocean is seen on the horizon under a clear blue sky.

The Ultimate  
in Luxury Living  
on the Riviera Maya

## GETTING TO CORASOL

While Corasol feels like a world of its own, **getting here is simple**. Cancun International Airport — an easy 40-minute drive from Corasol — is served **by all major airlines with many offering direct flights from major U.S. cities**.

**Cancun International Airport**  
*40 minutes*

**Coastal Resort Town  
Playa del Carmen**  
*8 minutes*

**Xcaret Eco Water Park**  
*15 minutes*

**Tulum Beaches &  
Mayan Ruins**  
*50 minutes*

**Cenote Chaak Tun  
Subterranean Caves**  
*20 minutes*

**Coba Mayan Ruins**  
*1.5 hours*

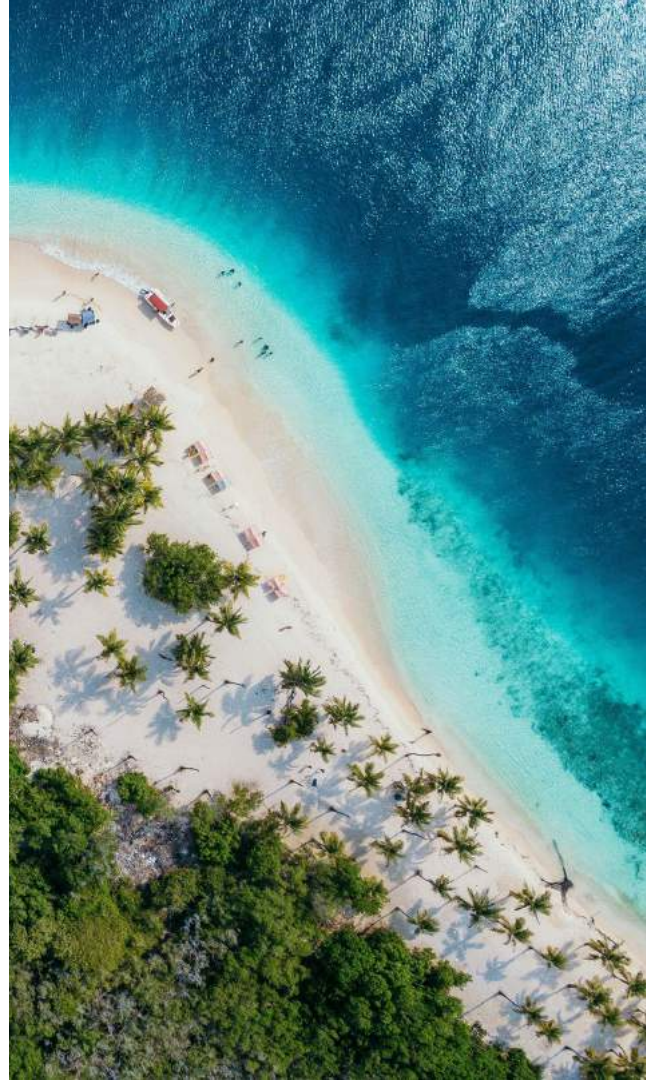


## RIVIERA MAYA

JOURNEY TO THE JEWEL  
OF THE MEXICAN CARIBBEAN

Riviera Maya has quickly become one of North America's most sought-after destinations. **Bordered by lush jungles and white sand beaches on the Yucatan Peninsula,** this enchanting paradise is also located minutes from iconic archaeological attractions dating back to the Maya civilization and **UNESCO World Heritage Sites.**





## INTRODUCING CORASOL

Claiming a prized, pristine stretch of the Riviera Maya coastline, **Corasol** represents a stunning new vision for exceptional resort living and legacy homeownership, all artfully sculpted into the landscape by **Sordo Madaleno** and **CUAIK Arquitectos**. Flawless white sand beaches, tranquil lagoons and a verdant valley of native jungle flora set the stage for this exceptionally private, gated residential resort community on the Caribbean Sea.



Main Access

Distance  
to the beach

10 minutes walk

3 minutes in golf cart



## UBICACIONES

- 1 Acceso
- 2 Palm Villas Estate Homes
- 3 The Village Resort & Residences
- 4 Costa Residences
- 5 Costa Beach Club
- 6 **Punta Laguna**
- 7 The Park
- 8 Huertos Orgánicos
- 9 Casa Club Gran Coyote

▲ Acceso Privado a 5ª Avenida

Mar Caribe



CORASOL

## CORASOL OWNERS'S & RENTERS ACCESS TO:

### Corasol Beach Area

Free Transportation from Punta Laguna to the beach. Parking, Dressing Rooms, Bathrooms. Concierge Service Upon Request: Beach Beds & Chairs Sun Umbrellas, Hammocks and Coolers.



### 1 Premium All Inclusive Beachfront Resorts

Access to purchase all inclusive day passes



*Images are illustrative and the final product may vary without notice*

*\*In progress*



## CORASOL MEMBERSHIP ACCESS TO:

Costa Beach Club



## CORASOL MEMBERSHIP ACCESS TO:

The Park



\*In progress

Gran Coyote Golf Course



Community Organic Gardens



\*In progress



Location of  
Punta Laguna

### **A retreat within a resort experience**

Immersed in a serene jungle landscape, Punta Laguna encompasses 12 acres of family-friendly, owner-exclusive amenities and activities. Its bright, modern residences offer breezy indoor/outdoor living spaces and sweeping views of the nearby, jungle lake and golf course.



## PUNTA LAGUNA

LUXURY APARTMENTS

CORASOL, RIVIERA MAYA

- 344 apartments
- 4 buildings
- 8 elevators
- Parking Area



# PUNTA LAGUNA

LUXURY APARTMENTS

CORASOL, RIVIERA MAYA

- From 2 Bedroom
- 2 Bathroom
- Living / Dining Room
- Kitchen
- Terrace

- Interior from: 70m<sup>2</sup> / 753 sqf
- Terrace from: 12m<sup>2</sup> / 129 sq ft
- Total from: 82m<sup>2</sup> / 882 sq ft





## PUNTA LAGUNA

### Experiences

- |                        |                       |
|------------------------|-----------------------|
| 1 . Motor Lobby        | 11 . Firepits         |
| 2 . Lobby              | 12 . Hammocks         |
| 3 . Zen Garden         | 13 . Laguna Pool      |
| 4 . Gym                | 14 . Oasis Pool       |
| 5 . Coworking          | 15 . Laguna Pier      |
| 6 . Yoga Area          | 16 . Lounge Bar       |
| 7 . Ventura Playground | 17 . Café / Lounge    |
| 8 . Teens Hall         | 18 . Paddle Courts    |
| 9 . Kids Club          | 19 . Pickleball Court |
| 10 . Barbecue Area     | 20 . Reading Jungle   |

\*The project may be modified according to the needs of the development.

## THE LOBBY CONCIERGE: YOUR “INSIDE CONNECTION” TO THE BEST PLAYA DEL CARMEN

**Special Courtesy:** set up of umbrellas, chairs, loungers and ice coolers at Corasol Beach Area.

### Upon Request:

- Arrange airport transfers and ground transportations
- Book tours, excursions, spa service & massages
- Reserve tickets for shows
- Make dinner reservations
- Hire Babysitter, Housekeeping, Private Chef, Laundry Services

\*Services upon request will depend on availability and has an additional cost.





PUNTA LAGUNA

LUXURY APARTMENTS

CORDON ROJO, RIVIERA MAYA

Las imágenes presentadas son ilustrativas, el producto final puede variar y cambiar sin previo aviso de acuerdo a las necesidades del proyecto y del desarrollador.





Las imágenes presentadas son ilustrativas, el producto final puede variar y cambiar sin previo aviso de acuerdo a las necesidades del proyecto y del desarrollador.



PUNTA LAGUNA

LUXURY APARTMENTS

CORASOL, RIVIERA MAYA



Las imágenes presentadas son ilustrativas, el producto final puede variar y cambiar sin previo aviso de acuerdo a las necesidades del proyecto y del desarrollador.



PUNTA LAGUNA

LUXURY APARTMENTS

CORASOL, RIVIERA MAYA



Las imágenes presentadas son ilustrativas, el producto final puede variar y cambiar sin previo aviso de acuerdo a las necesidades del proyecto y del desarrollador.



Las imágenes presentadas son ilustrativas, el producto final puede variar y cambiar sin previo aviso de acuerdo a las necesidades del proyecto y del desarrollador.



PUNTA LAGUNA

LUXURY APARTMENTS

CORASOL, RIVIERA MAYA

Las imágenes presentadas son ilustrativas, el producto final puede variar y cambiar sin previo aviso de acuerdo a las necesidades del proyecto y del desarrollador.



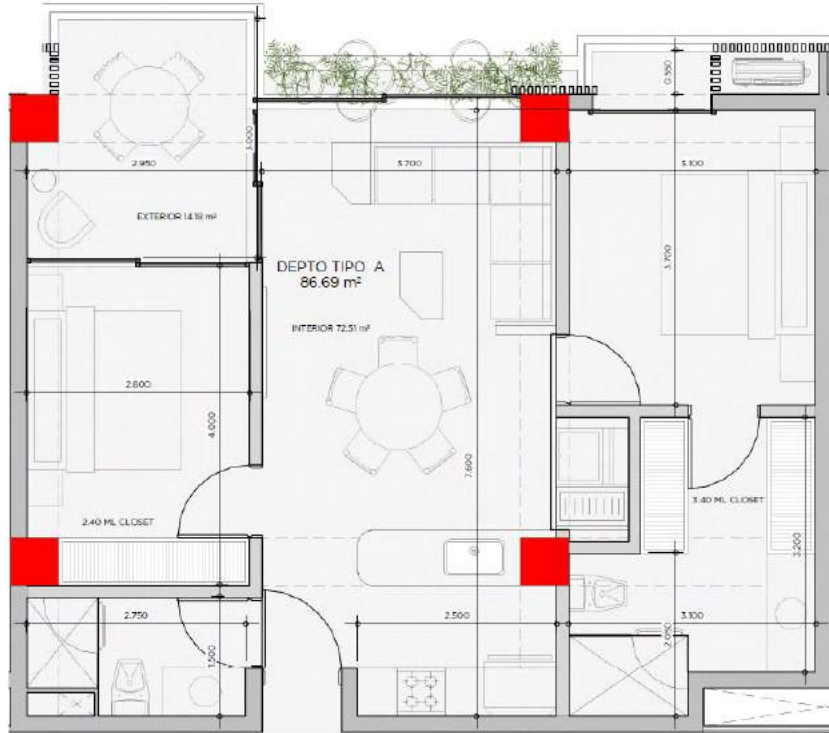
## PUNTA LAGUNA

### Condo interiors

- Interior flooring: Natural stone floor
- Balcony flooring: Chukum
- Apartment divisory walls: Paste
- Frames: Paste
- Color: Lynx
- AC: In each bedroom and living room
- Cable TV, internet and telephone ducts in each bedroom and living room (service activation to be done by owner).
- LED lights fixtures.
- Carpentry: closets and access door.
- Kitchen includes: Stone bar, cabinets and cupboards in wood finish, Hood, stove and stainless steel sink.
- Single sink and faucet with cold and hot water.
- Cooktop.
- Oven.
- Electric extractor hood.
- Bathroom sink and accessories: shower towel rail, paper holder, shower arm and sink with single lever faucet. Cold and hot water tap/faucet.

# PUNTA LAGUNA

Type A



- Bedrooms: 2
- Bathrooms: 2
- Living / Dining Room
- Kitchen
- Terrace

- Interior from: 70m<sup>2</sup> / 753 sqf
- Terrace from: 12m<sup>2</sup> / 129 sq ft
- Total from: 82m<sup>2</sup> / 882 sq ft

## PLANTA DEPTO TIPO A

ESCALA 1 : 50

# PUNTA LAGUNA

Type B



- Bedrooms: 3
- Bathrooms: 2
- Living / Dining Room
- Kitchen
- Terrace

- Interior from: 90m<sup>2</sup> / 969 sqf
- Terrace from: 14m<sup>2</sup> / 150 sq ft
- Total from: 94m<sup>2</sup> / 1,119 sq ft

## PLANTA DEPTO TIPO B

ESCALA 1 : 50



