

# Ohm

**COMMUNITY IN HARMONY WITH NATURE.**

Ohm means the sound essence of the universe, a primordial vibration that connects all that exists.



A dirt path winds through a lush tropical forest. The path is light-colored and leads into the distance, flanked by dense greenery. Large palm trees with fan-shaped fronds are prominent in the foreground and middle ground. The background is filled with a thick canopy of various tropical trees and plants. The overall atmosphere is serene and natural.

The  
ideal path  
to  
connect with  
our purest  
essence.

ohm  
RESERVE





# Tulum

Tulum is recognized worldwide for its natural, bohemian and chic style, where the connection with nature awakens your senses and calms the spirit.

White sand beaches and crystal clear waters frame an ancient walled city that is considered one of the most important archaeological sites in Mexico.







## Our location

15 Av. Norte  
between Calle 10 and 8 Norte  
Tulum, Quintana Roo

**1.40 hr**  
Cancun's International Airport

**1 hr**  
Playa del Carmen

**10 mins**  
Downtown Tulum

**25 mins**  
Beacha

**20 mins**  
Tulum's International Airport  
(Coming Soon)



# Our community

The philosophy of our community is based on values and principles that promote a harmonious coexistence among its members and an integral development of each one of them.



## Reconnection

Connection with the source of energy and Nature as a meaningful and transformative experience. Breathing deeply while paying attention to the sounds and sensations surrounding us.



## Fullness

Fullness of life as a time of the greatest state of happiness connected with a sense of fulfillment, satisfaction and connection with oneself and the others.



## Gratitude

Practicing gratitude for the little and the big things in life. Take time to reflect on what we are grateful for and think about how we can give our best selves to others.



## Balance

Balance of the physical, mental and spiritual bodies to achieve living a full life in a state of permanent happiness.





## Master Plan

The land covers an area of 18,307.06 m<sup>2</sup>. The apartments occupy only 23% (4,188.10 m<sup>2</sup>) of the total land, leaving plenty of space for green areas, amenities and circulation. Turning the project into a large natural reserve.



Perimeter fence





# Living in community

Our main mission is to reconnect our residents with their own essence and Nature. Each resident that is part of our community will explore a new way to live more effectively, fully and connected.



# Live the experience

Every step we take on the rainforest path is one step closer to discovering the ideal community. We enter through a gateway that symbolizes the beginning of new stages in life; a gateway to a new awakening.



Ohm  
RESERVE





ohm  
RESERVE





# Ammenites

The big area of ammenities has an merging design.  
We build healthy spaces where we share experiences around hapiness.  
The fragances and textures of Nature incite the senses,  
arousing pleasure, relaxation and reconnection.

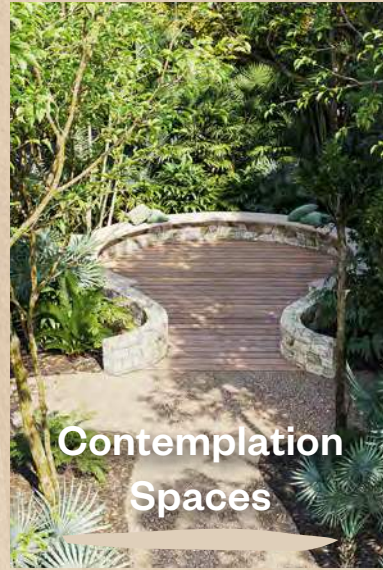




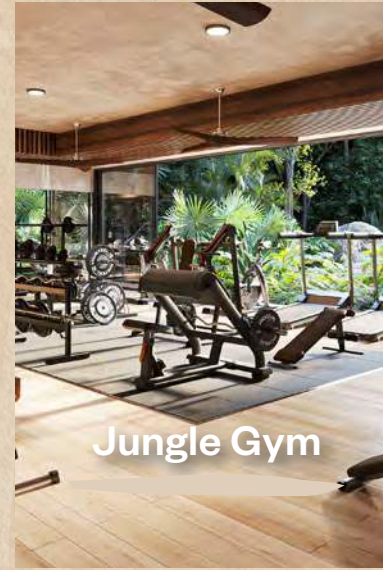
Natural Pool



Walking Trails



Contemplation Spaces



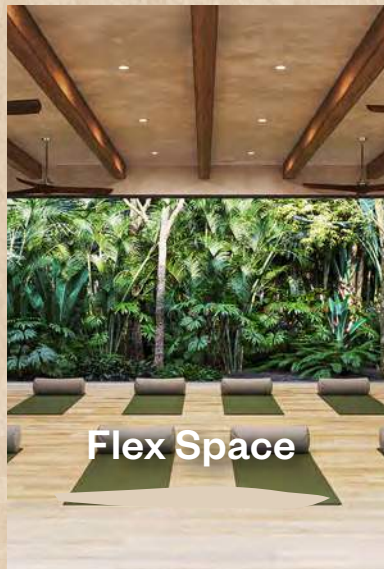
Jungle Gym



Pet Park



Firepit



Flex Space



Jungle Office



Nature Kitchen



Children's Park





## Ammenities

Virtual Tour

- |   |                 |   |                     |   |               |    |                 |
|---|-----------------|---|---------------------|---|---------------|----|-----------------|
| 1 | Guardhouse      | 4 | Pet Park            | 7 | Natural Pool  | 10 | Natural Kitchen |
| 2 | Jungle Gym      | 5 | Firepit             | 8 | Jungle Office |    |                 |
| 3 | Children's Park | 6 | Contemplation Space | 9 | Flex Space    |    |                 |





## Natural Pool

A river type pool 103 m long that blends seamlessly with the landscape, providing a genuine relaxing experience.





## Walking Trails

Strolling through the trails of Ohm Reserve surrounded with unrivalled nature is a gift for your senses; it amazes the soul and inspires a conscious respect for Nature.





## Contemplation Spaces

Spaces that were created for meditation and contemplation. It allows us to see further than what one can visualize and makes us perceive the magical sensations of Nature.





## Jungle gym

A space designed to exercise around nature with organic, functional training stations.





## Pet Park

Recreational space for your pets so that they might have a workout and have fun freely.  
A space that favors their integral health, improving their physical state, mental balance and social skills.





## Firepit

Very comfortable spaces where one can listen to the melodies of Nature:  
The sound of the wind through the trees, birds singing, serenity at sunset.





## Flex Space

A space where one can find an offer of different activities like Yoga, meditation and social events that improve the social cohesion of the community.





## Jungle Office

Here you will be able to work in an open space under the blue sky and around natural surroundings that improve one's mental capacity, stimulating memory and creativity.





## Nature Kitchen

A rustic kitchen in the open where you can combine three passions: Nature, gastronomy and good company.





## Children's park

Games that connect with nature, allow playful activities that brings great benefits in the psychological, social and emotional development of children; increasing motor skills and cognitive abilities.





Ohm  
RESERVE

The jungle has been the source of our inspiration.  
The architectural design of Ohm Reserve has been designed  
so that Nature embraces us, bringing us  
peace and tranquility.





## Phases

Delivery Tower 1 and Tower 2: September, 2025

Delivery Tower 3 and Tower 4: December, 2025





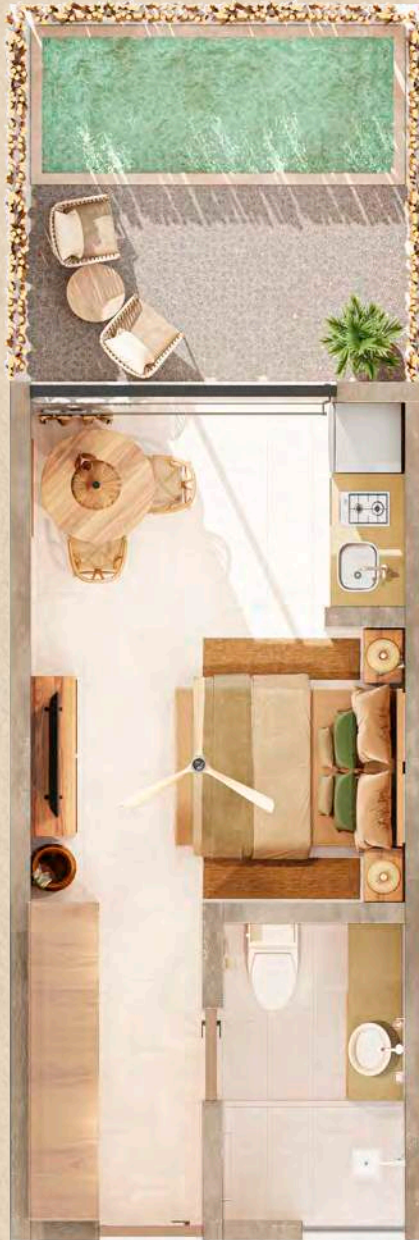
## Studios Tower 1

We offer an ideal home option inside a community that is planned out to create an environment that fosters the residents wellbeing and a respect for Nature and family.









## Garden Studio

### Measurements:

Interior	25.87 m <sup>2</sup>
Exterior	11.38 m <sup>2</sup>
Total:	37.25 m <sup>2</sup>
Level:	0
Bedrooms:	1
Bathrooms:	1
Pool	1.40m x 3.27m
Kitchen	Yes





## Corner Garden Studio

### Measurements:

Interior	26.55 m <sup>2</sup>
Exterior	25.40 m <sup>2</sup>
Total:	51.95 m <sup>2</sup>
Level:	0
Bedrooms:	1
Bathrooms	1
Pool	1.40m x 3.27m
Kitchen	Yes
Garden	Yes





## Studio L1

### Measurements:

Interior	25.89 m <sup>2</sup>
Exterior	6.28 m <sup>2</sup>
Total:	32.17 m <sup>2</sup>
Level:	1
Bedrooms:	1
Bathrooms:	1
Kitchen	Yes
Balcony	Yes





## Corner Studio L1

### Measurements:

Interior 26.55 m<sup>2</sup>

Exterior 16.98 m<sup>2</sup>

Total: 43.53 m<sup>2</sup>

Bedrooms: 1

Kitchen Yes

Balcony Yes



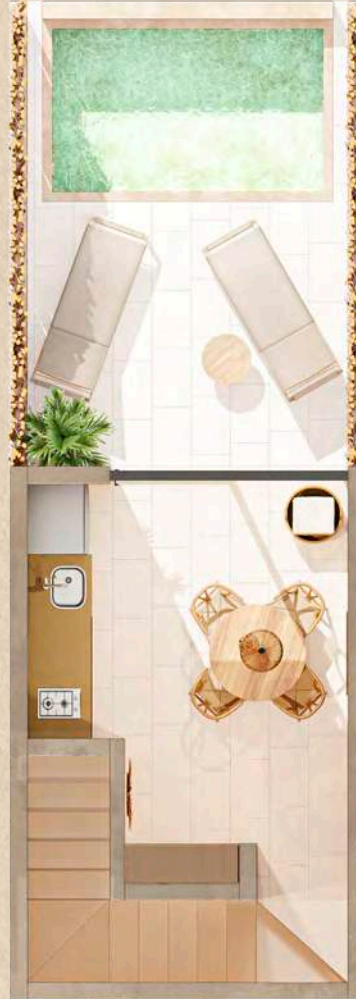


## 2 Bedroom L1

### Measurements:

Interior	65.01 m2
Exterior	22.72 m2
Total:	87.73 m2
Level:	1
Bedrooms:	2
Bathrooms:	1
Kitchen	Yes
Living Room	Yes
Terrace	Yes
Balcony	Yes





## 1 Bedroom PH

### Measurements:

Interior 31.05 m<sup>2</sup>

Exterior 7.07 m<sup>2</sup>

Total: 38.12 m<sup>2</sup>

### Rooftop:

Interior 18.80 m<sup>2</sup>

Exterior 17.21 m<sup>2</sup>

Total: 36.01 m<sup>2</sup>

Total metraje: 74.13 m<sup>2</sup>

Level: 2 y Rooftop

Bedrooms: 1

Bathrooms: 1

Pool 1.77m x 2.97m

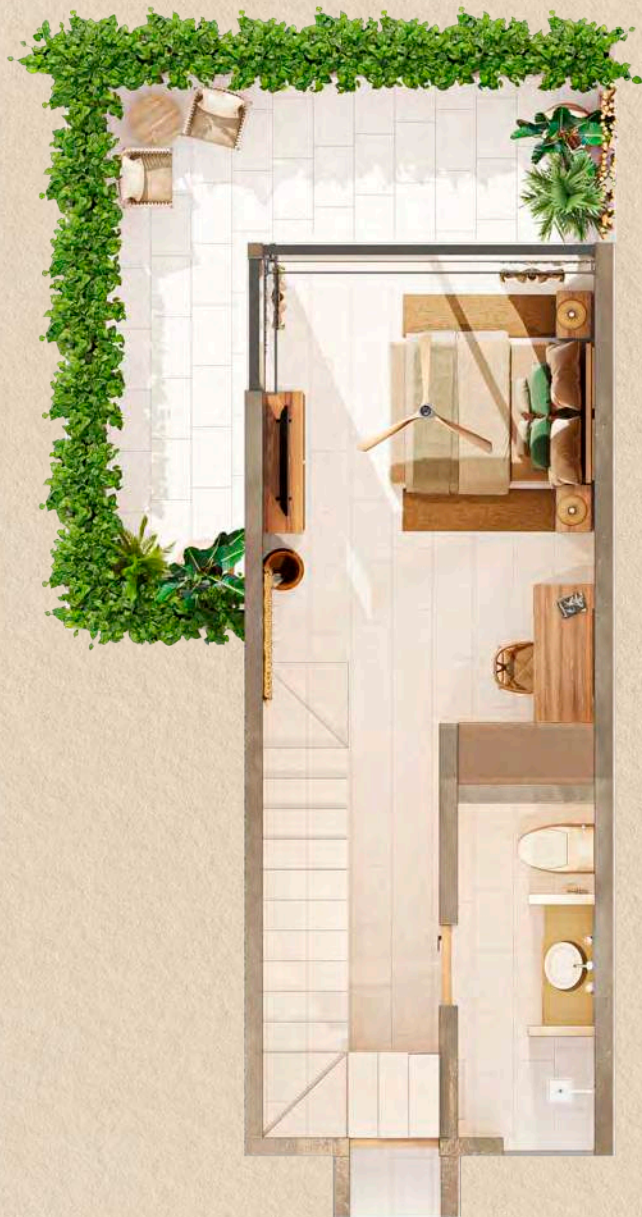
Kitchen Yes

Balcony Yes

Terrace Yes



# 1 Bedroom PH Corner



## Measurements:

Interior	31.87 m <sup>2</sup>
Balcón	17.72 m <sup>2</sup>
Total:	49.59 m <sup>2</sup>
Rooftop	
Interior	18.80 m <sup>2</sup>
Exterior	17.21 m <sup>2</sup>
Total:	36.01 m <sup>2</sup>

Total measurements: 85.6 m<sup>2</sup>

Level:	2 y Rooftop
Bedrooms:	1
Bathrooms:	1
Pool	1.77m x 2.97m
Kitchen	Yes
Balcony	Yes
Terrace	Yes











## 2 Bedroom L1





1 Bedroom PH Corner









Roof PH

# ohm

RESERVE







## Apartments Towers 2 & 4

Wellbeing means a state of harmony with our environment and here in Ohm Reserve we found the perfect balance by building consciously.





## Selva Tierra Apartment

### Measurements:

Interior	92.56 m <sup>2</sup>
Exterior	34.34 m <sup>2</sup>
Total:	126.9 m <sup>2</sup>
Level:	0
Bedrooms:	2
Bathrooms:	2.5
Pool	1.40m x 1.40m
Garden	Yes
Kitchen	Yes
Dinning Room	Yes
Living Room	Yes
Laundry Room	Yes





# PH Selva Media Apartment

## Measurements:

Interior 86.83 m<sup>2</sup>

Exterior 3.64 m<sup>2</sup>

Total: 90.47 m<sup>2</sup>

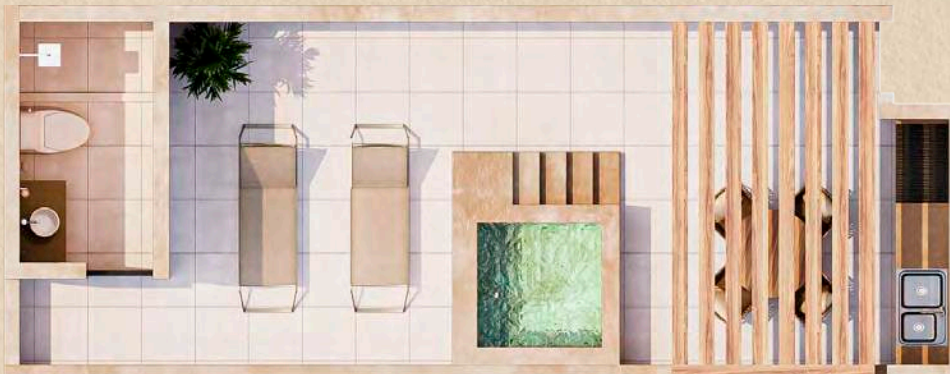
## Rooftop:

Interior 7.90 m<sup>2</sup>

Exterior 31.78 m<sup>2</sup>

Total: 39.68 m<sup>2</sup>

Total measurements: 130.15 m<sup>2</sup>



Level: 1

Bedrooms: 2

Bathrooms: 3

Pool 1.40m x 1.40m

Garden Yes

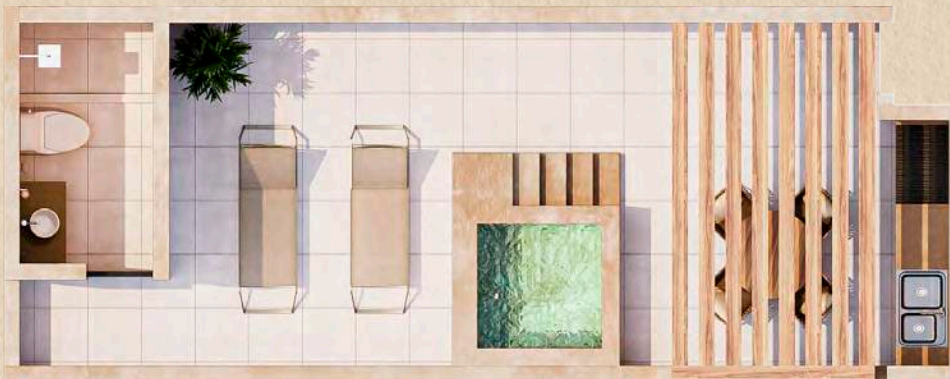
Kitchen Yes

Dinning Room Yes

Living Room Yes

Laundry Room Yes





# PH Selva Alta Apartment

## Measurements:

Interior 86.83 m<sup>2</sup>

Exterior 3.64 m<sup>2</sup>

Total: 90.47 m<sup>2</sup>

## Rooftop:

Interior 7.90 m<sup>2</sup>

Exterior 31.78 m<sup>2</sup>

Total: 43.66 m<sup>2</sup>

Total measurements: 134.13 m<sup>2</sup>

Level: 2

Bedrooms: 2

Bathrooms: 3

Pool 1.40m x 1.40m

Garden Yes

Kitchen Yes

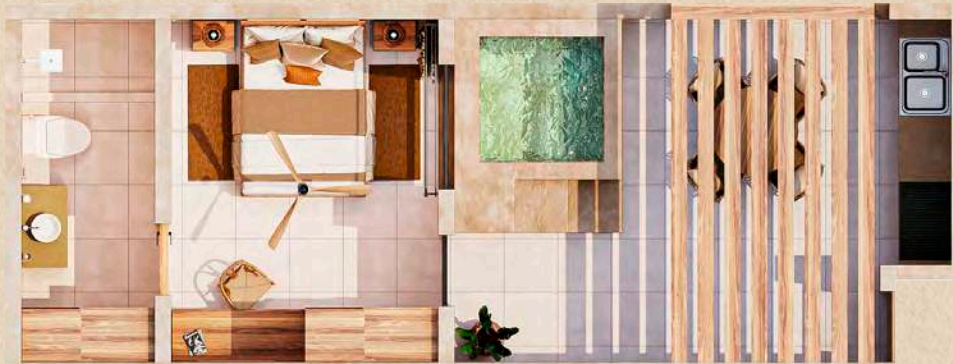
Dinning Room Yes

Living Room Yes

Laundry Room Yes



# PH Selva Alta with Flex Apartment



## Measurements:

Interior 86.83 m<sup>2</sup>

Exterior 3.64 m<sup>2</sup>

Total: 90.47 m<sup>2</sup>

## Rooftop:

Interior 23.49 m<sup>2</sup>

Exterior 20.17 m<sup>2</sup>

Total: 43.66 m<sup>2</sup>

Total measurements: 134.13 m<sup>2</sup>

Level: 2

Bedrooms: 3

Bathrooms: 3

Balcony Yes

Pool 140m x 1.40m

Garden Yes

Kitchen Yes

Dining Room Yes

Living Room Yes

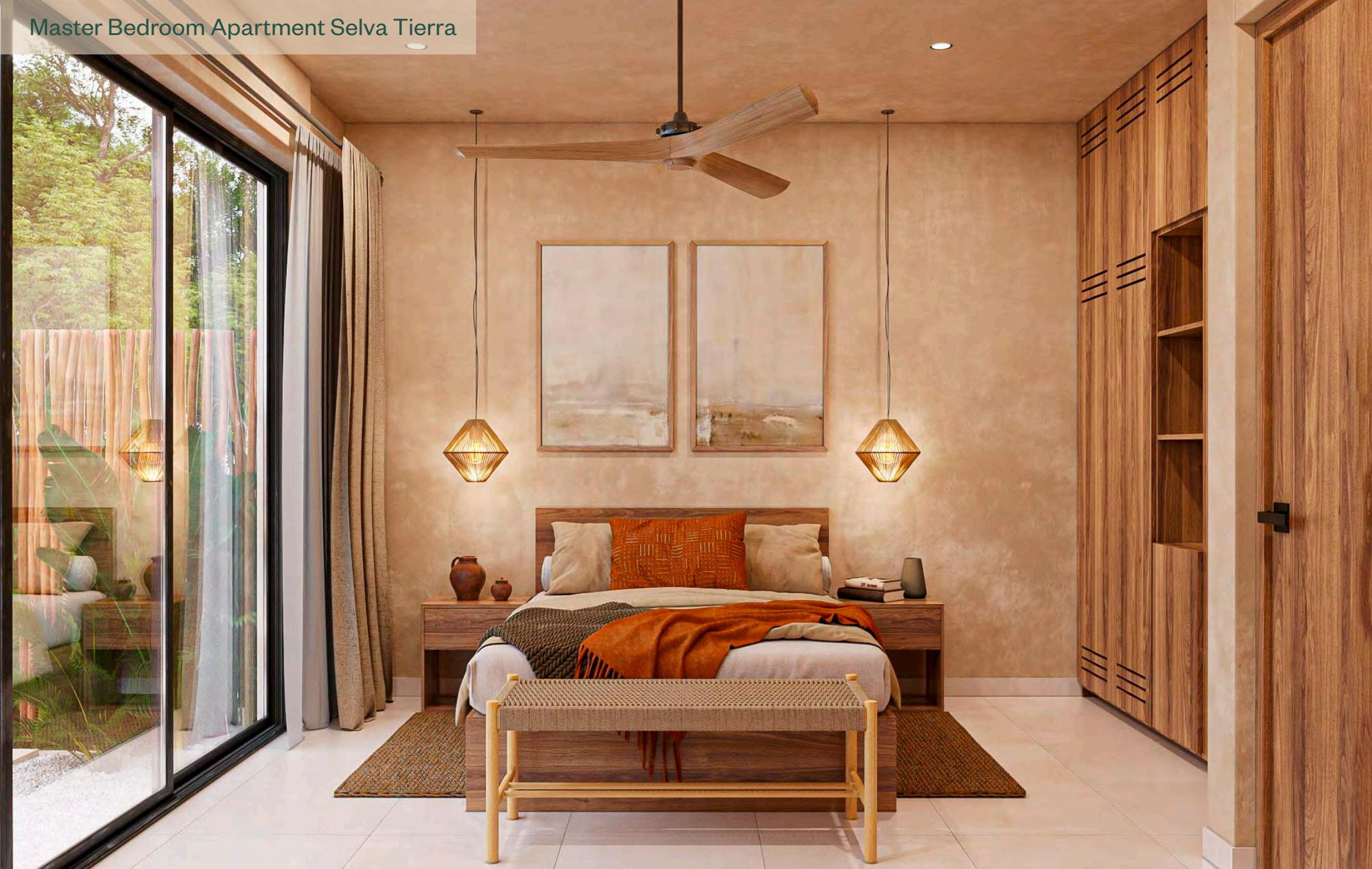
Laundry Room Yes







Master Bedroom Apartment Selva Tierra



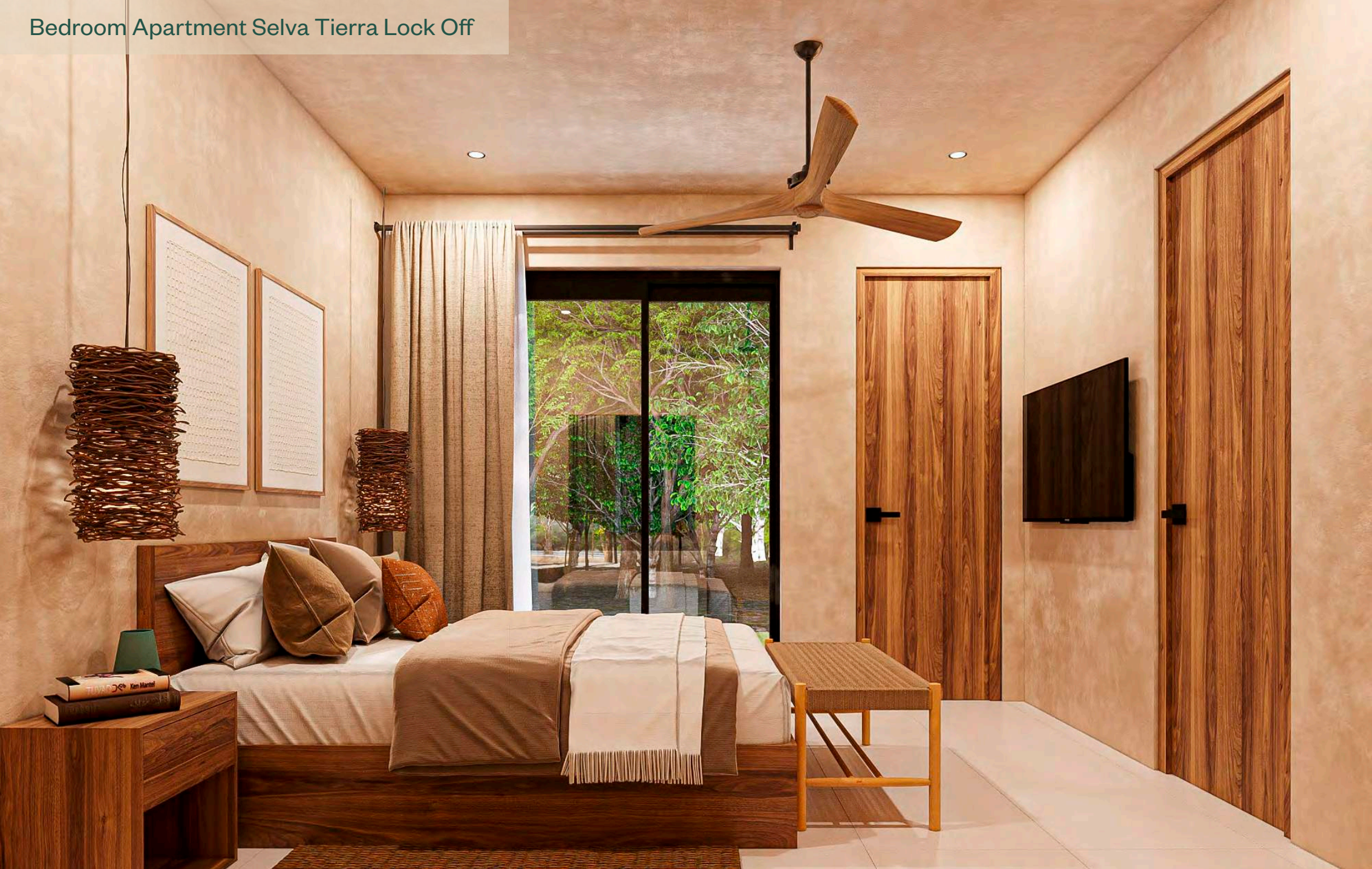


# Kitchen Apartment Selva Tierra





## Bedroom Apartment Selva Tierra Lock Off





Living Room Apartment Selva Media or Alta





# Master Bedroom Apartment Selva Media or Alta





# Dining Room Apartment Selva Media or Alta





Bedroom Apartment Selva Media or Alta





Rooftop Selva Media or Alta









Roof Exterior Apartment Selva Alta Flex







**Studios &  
Apartments  
Tower 3**





## Garden Corner Studio

### Measurements:

Interior	35.11 m2
Exterior	25.40 m2
Total:	60.51 m2
Level:	0
Bedrooms:	1
Bathrooms:	1
Pool	3.27m x 1.40m
Kitchen	Yes
Garden	Yes





## Garden Studio

### Measurements:

Interior	34.22 m <sup>2</sup>
Exterior	11.37 m <sup>2</sup>
Total:	45.59 m <sup>2</sup>
Level:	0
Bedrooms:	1
Bathrooms:	1
Pool	3.27m x 1.40m
Kitchen	Yes
Balcony	Yes





## Garden 1 Bedroom Apartment

### Measurements:

Interior	45.61 m <sup>2</sup>
Exterior	31.28 m <sup>2</sup>
Total:	76.89 m <sup>2</sup>
Level:	0
Bedrooms:	1
Bathrooms:	1
Pool	3.27m x 1.40m
Garden	Yes
Kitchen	Yes
Living Room	Yes





## L1 2 Bedroom Apartment

### Measurements:

Interior	67.16 m2
Exterior	20.32 m2
Total:	87.48 m2
Level:	1
Bedrooms:	2
Bathrooms:	1
Balcony	Yes
Kitchen	Yes
Dinning Room	Yes
Living Room	Yes





## L1 1 Bedroom Apartment

### Measurements:

Interior	45.61 m <sup>2</sup>
Exterior	10.74 m <sup>2</sup>
Total:	56.35 m <sup>2</sup>
Level:	1
Bedrooms:	1
Bathrooms:	1
Balcony	Yes
Kitchen	Yes
Living Room	Yes





## Studio L 1

### Measurements:

Interior	34.22 m2
Exterior	6.37 m2
Total:	40.59 m2
Level:	1
Bedrooms:	1
Bathrooms:	1
Kitchen	Yes
Balcony	Yes





# 1 Bedroom PH Studio

## Measurements:

Interior 32.32 m<sup>2</sup>

Exterior 7.07 m<sup>2</sup>

Total: 39.39 m<sup>2</sup>

Rooftop:

Interior: 19.78 m<sup>2</sup>

Exterior: 14.23 m<sup>2</sup>

Total: 34.01

Total measurements: 73.4 m<sup>2</sup>

Level: 2 and Rooftop

Bedrooms: 1

Bathrooms: 1

Pool 3.27m x 1.40m

Kitchen Yes

Terrace Yes

Balcony Yes



Ohm  
RESERVE





